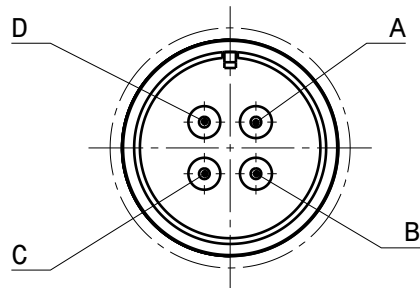


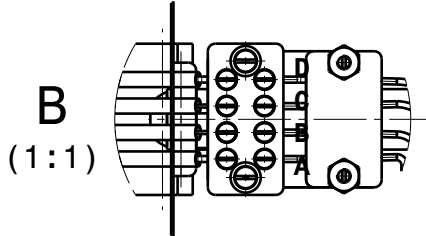
Pinout



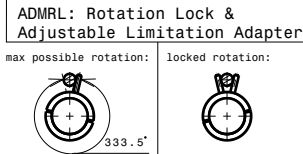
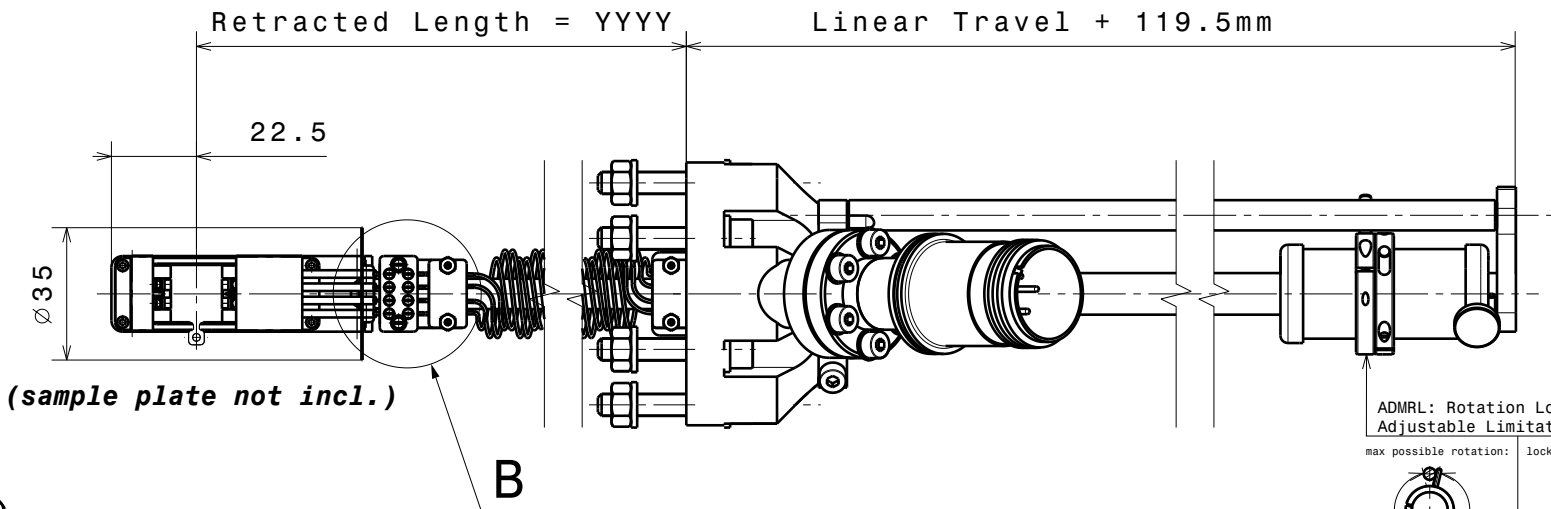
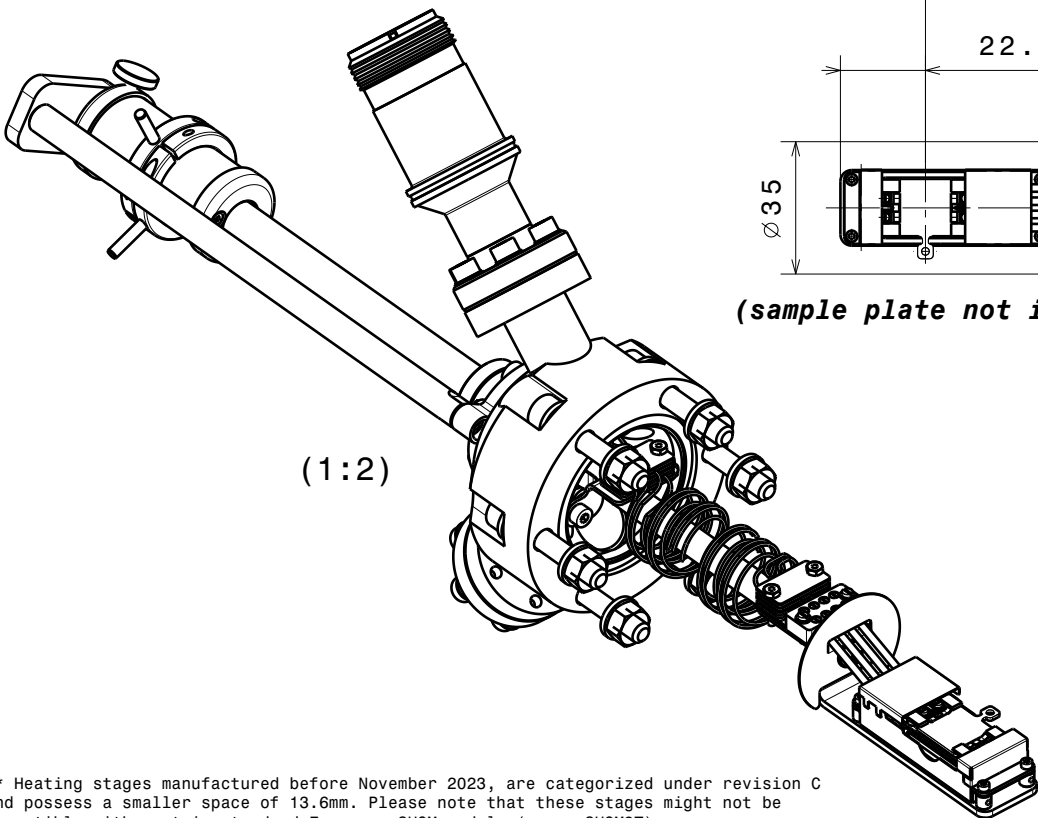
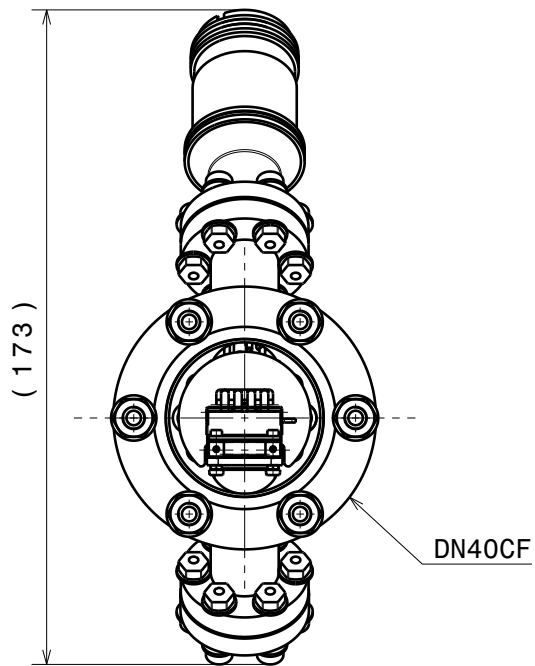
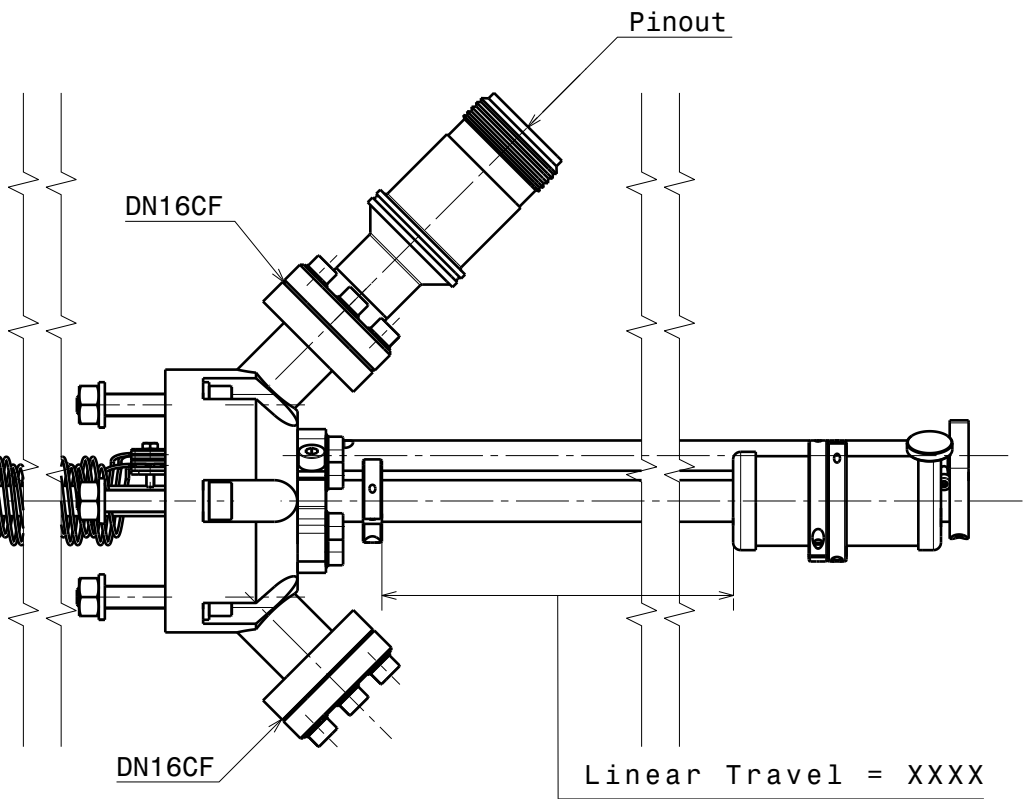
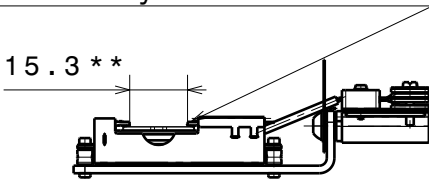
(view from air side)

| Terminal | Function |
|----------|--------------|
| A | heater - |
| B | TC - (Ni-Al) |
| C | TC + (Ni-Cr) |
| D | heater + |

in vacuum luster terminal



Option for sample receiver:
1. electrically insulated (default)
2. grounded to body



** Heating stages manufactured before November 2023, are categorized under revision C and possess a smaller space of 13.6mm. Please note that these stages might not be compatible with certain standard Ferrovac SHOM models (e.g., SHOM3T).

Material:

PBN Heating Station for Flag Style Plates with Linear Travel

Ferrovac
CH-8050 Zurich

THE INFORMATION CONTAINED IN THIS DRAWING IS THE SOLE PROPERTY OF FERROVAC. ANY REPRODUCTION IN PART OR AS WHOLE WITHOUT OUR PERMISSION IS PROHIBITED.

| | | |
|------------------------|------------------|--|
| nominal dimensions | ≤30mm | DIN ISO 2768-f-H |
| | >30mm | DIN ISO 2768-m-K excluding Sym./Runout |
| Sym./Runout | >30mm | DIN ISO 2768-H |
| formed part dimensions | DIN ISO 2768-f-H | |
| Scale | Drawn | J.Buechi |
| 1:2 (1:1) | Date | 19.11.2020 |
| | Changed | 18.03.2025 CW |
| HSASOM40 (PBNMD) | | |
| Rev. | E | A3 sheet 1/1 |