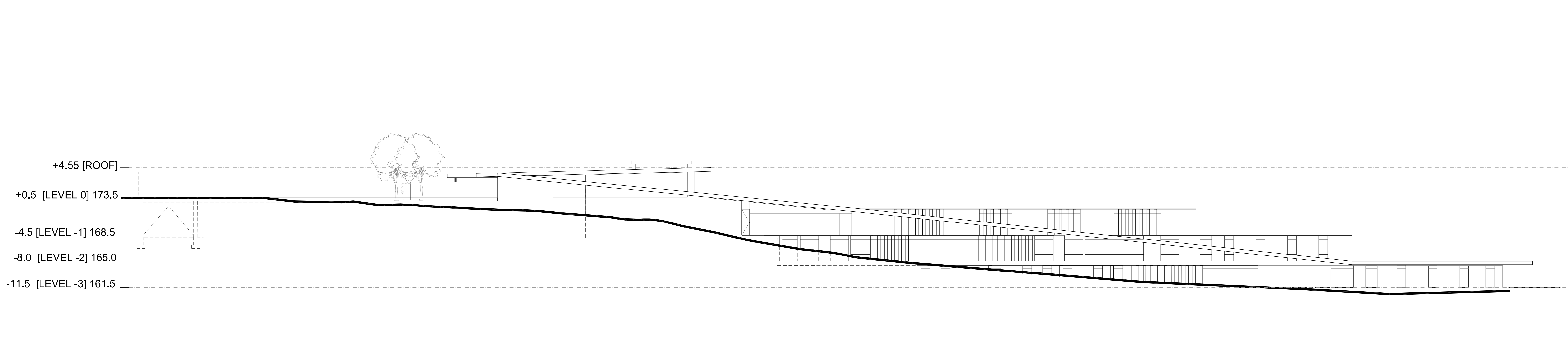
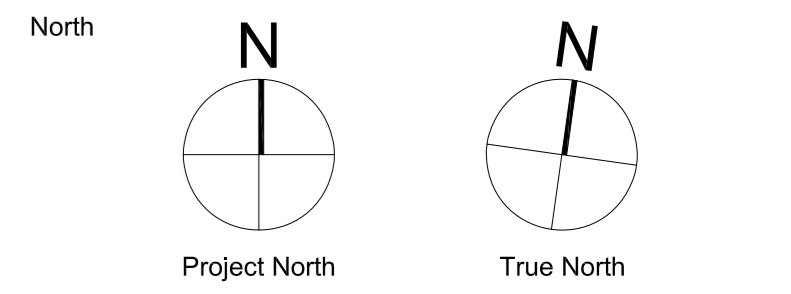


General Notes:

1. These Contract Documents are the property of the Architect. The Architect bears no responsibility for the interpretations of these documents by the contractor. Upon written application the Architect will provide written clarification or supplementary information regarding the intent of the Contract Documents. The Architect will review Shop Drawings submitted by the Contractor for design conformance only.
2. Drawings are not to be scaled for construction. Contractor to verify all existing conditions and dimensions required to perform the Work and report any discrepancies with the Contract Documents to the Architect before commencing work.
3. Positions of proposed or finished mechanical or electrical devices, fittings, and fixtures are indicated on the Architectural drawings. The locations shown on the Architectural drawings govern over the Mechanical and Electrical drawings. Those items not clearly located will be located as directed by the Architect.



Rev.	Issue / Description	Date
2	REISSUED FOR OPA & ZBA	February 02, 2024
1	ISSUED FOR OPA & ZBA	September 15, 2022

Architect of Record:
HARIRI PONTARINI ARCHITECTS
 235 Carlaw Avenue
 Suite 301
 Toronto, Canada M4M 2S1
 TEL 416 929 4901
 FAX 416 929 8924
 info@hp-arch.com
 hariripontarini.com

Project Title:
Bahá'í National Centre and Temple
 7200 Leslie St. Thornhill, ON L3T 6L6

New Bahá'í National Centre SOUTH ELEVATION

Project number: 1709
 Scale: 1:200 @ A0
 Date: January 15, 2024
 Drawn by: HPA

Drawing No.: Revision:

A3.01