



## Service Advisory

**SA 2025-01**

June 5, 2025

**Subject: Potential of Hydraulic Hoses Coming into Contact with Hydraulic Tank on Certain Headramps Built on Peterbilt 589 Tractors**

Dear Valued Customer:

We have determined that a possibility exists for some hydraulic hoses near the hydraulic tank to come into contact with the tank on certain Cottrell headramps built on Peterbilt 589 tractors. Such contact may result in a hydraulic leak. See enclosed Photo 1 showing possible hydraulic hose contact locations.

We are reaching out to you because our records indicate that you may own one or more of these Cottrell headramps built on a Peterbilt 589 tractor. If you still own one or more of the subject headramps, we recommend the following:

1. As a reminder and consistent with the instructions and warnings in our Operator's Manuals and on our products, always make sure your decks are properly locked and supported using the deck-locking devices on your Cottrell equipment. This instruction/warning applies during loading, unloading and transporting your load over-the-road.
2. Inspect the hydraulic hoses near the hydraulic tank on your headramp(s) to ensure that a minimum of 1/4" gap exists between the hoses and tank (refer to Photo 1). If there is not a minimum gap of 1/4" between the hoses and tank, we will ship free of charge the parts and instructions needed to reroute the hoses to ensure sufficient clearance (see Photo 2).

After performing the inspection indicated above, if you have any headramps built on Peterbilt 589 tractors that have less than 1/4" gap between the hydraulic hoses and tank, please email us at the email address below providing the number of units affected along with the address of your repair shop or authorized repair facility where you would like the repair to be performed. We will ship the parts and instructions needed for those units to the location provided free of charge.

Cottrell will reimburse labor for the relocation of hydraulic hoses at a maximum of two (2) hours per unit at the pre-approved labor rate. Requests for reimbursement can be submitted with receipts to [Warranty@Cottrelltrailers.com](mailto:Warranty@Cottrelltrailers.com) or handled directly through one of Cottrell's Authorized Warranty Repair Centers (a list can be found at [www.cottrelltrailers.com](http://www.cottrelltrailers.com)).

[Warranty@Cottrelltrailers.com](mailto:Warranty@Cottrelltrailers.com)

1-800-827-0132 Ext. 103

Photo 1

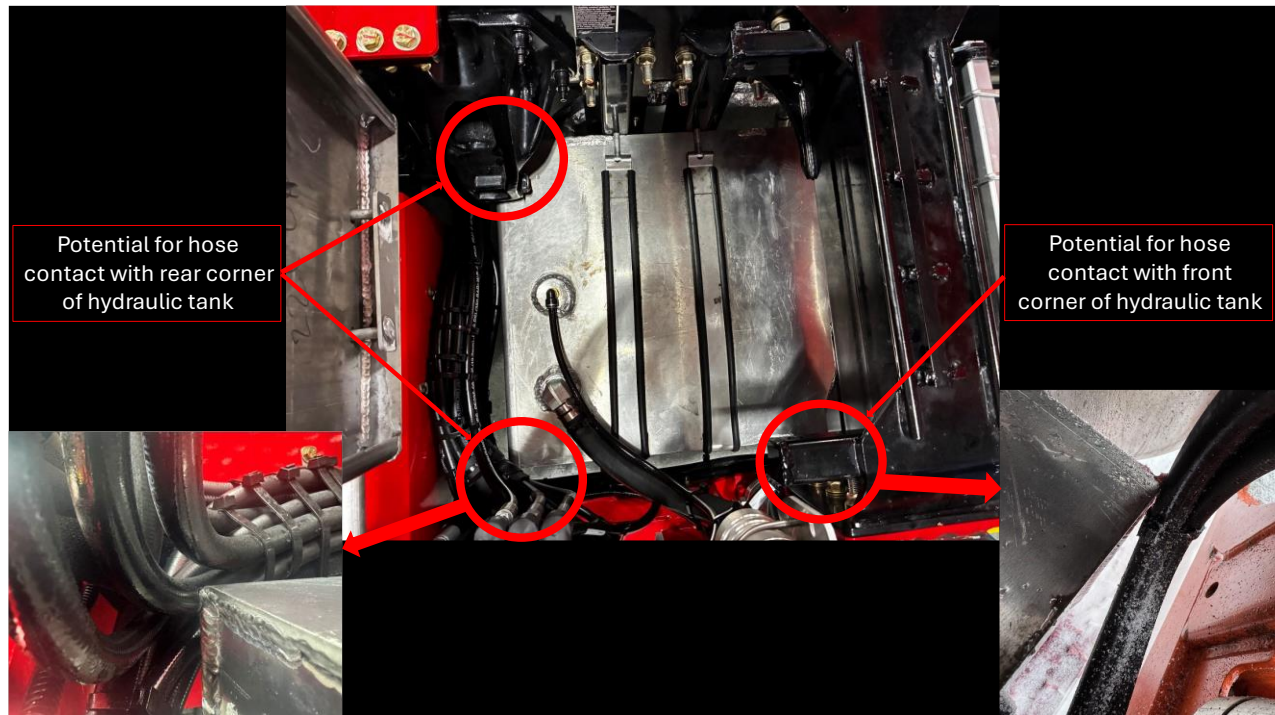


Photo 2

