



ZEEKR 7X

Indulge Every Journey



The images shown are for reference only, please refer to the actual vehicles at the time of release.
Follow safe driving practices and strictly follow traffic regulations and laws.

ZEEKR

Elegant Appearance

Hidden Energy Design Philosophy
Blending Aesthetics With Practicality



Classic Luxury SUV Silhouette



ZEEKR Stargate Integrated Smart Light Curtain

World's largest
93"
Giant Light Strip

Most densely in the industry
1831
High-power LED Beads

Industry-leading
30 fps
Ultra-high Refresh Rate

310°
Ultra-wide FOV



Frameless Automatic Doors



Frameless Electric
Outside Rearview Mirror



Concealed Beltline



Concealed Rear Wiper



0.247Cd Ultra-low Drag Coefficient



Exquisite Interior



Embracing Immersive Cabin



Ripple Effect
Ambient Lighting



NAPPA Full
Grain Top-layer Leather Seat



Luxury Console Design



Elegant Soft-wrapping Interior



Piano-Key Console Buttons

Every Detail is Defined
Elegance is a Philosophy of Life



Front Passenger Seat into a Bed



36 Flexible Spaces
Beyond Your Storage Imagination

*The 62L front trunk capacity for the RWD version.

*Optional

Intelligent Cabin

Technology Redefines Luxury
Offering More Enjoyable Experiences for You



ZEEKR AI Intelligent Ecosystem
With One Click to Activate Your Relaxation Mode

Superior Performance



Leading Performance in Class
Unrestricted Travel in All Scenarios



800V

High Voltage System

3.8s^{*}

0-100km/h Acceleration Time

615km^{*}

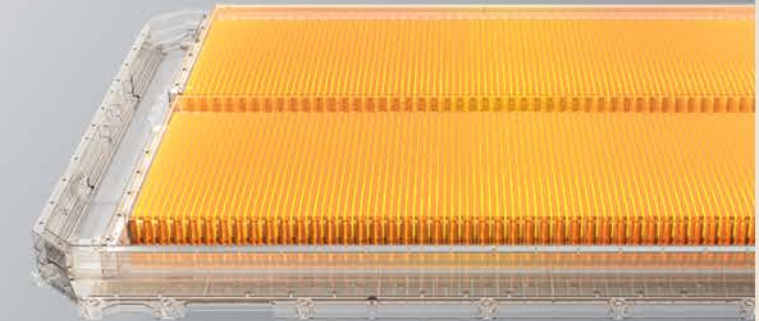
WLTP Target Range

10.5min^{*}

SoC 10%-80%



100kWh Qilin Battery
WLTP Range Of Up To 615km



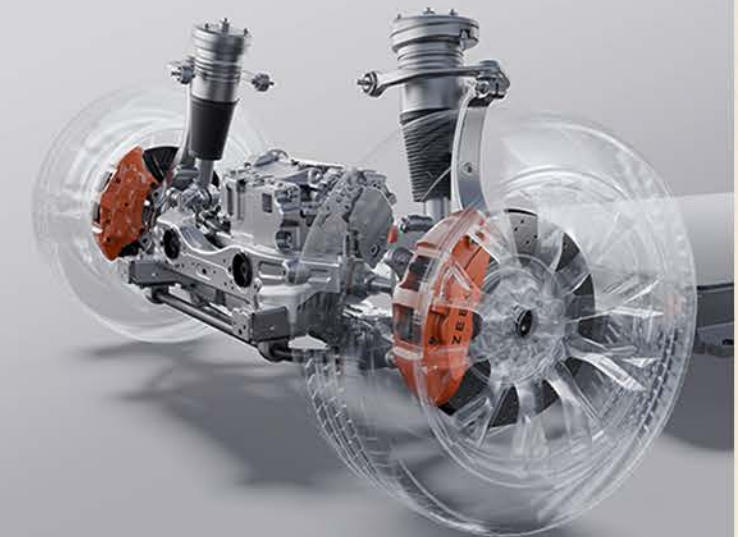
75kWh 2nd Gen Golden Brick Battery
SoC 10%-80% 10.5min



Front Double Wishbone + Independent Rear Five-link Suspension



ZEEKR Magic Carpet Air Suspension with CCD



Akebono Front Four-piston Calipers^{*}

1.Data is based on engineering test results and may vary due to test factors such as weather, road conditions, battery charge, load, and tire specifications.
2.This is based on the longest range data of the ZEEKR 7X's ternary (NCM) lithium battery pack, and 3.8s is the fastest 0-100 km/h acceleration time for the AWD Performance variant.
3.The charging data reflects the fastest charging time for the second-generation Golden Brick battery when using the V3 liquid-cooled supercharger at room temperature.
4.The configurations mentioned are not standard across all variants. Please refer to the product configuration table for details.
^{*} Only available for AWD Performance variant.



All-round Safety

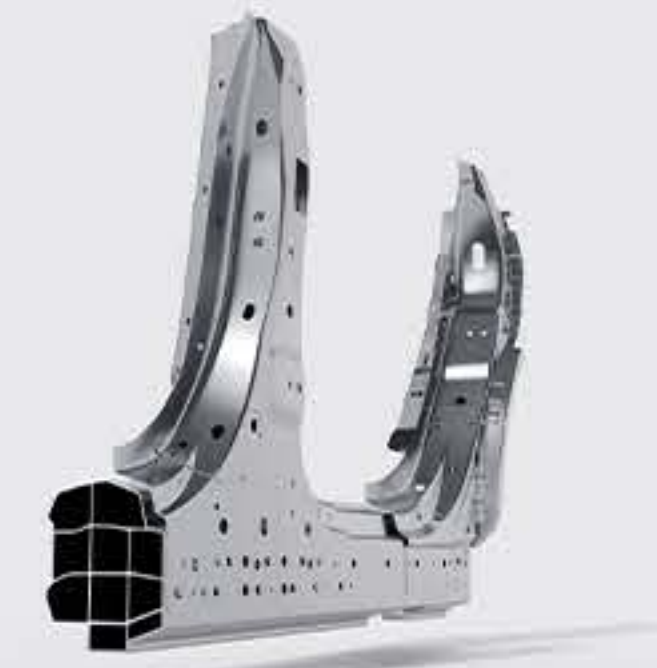
720° Safety Castle Protects in All Scenarios

One-piece Die-cast Rear Aluminum Body

16% Reduction In Body Distortion After Rear Impacts

82 Fewer Parts

About 820 Fewer Welding Points



Ten-grid Side Protection for Battery Safety

Endure About 75 Tons of Lateral Pole Impact



Standard Across The Lineup With 7 Airbags

x1	x1	x2
Driver's Frontal Airbag	Front Passenger's FOX Frontal Airbag	Front Side Airbags
x2	x1	
Full-length Side Curtain Airbags	Front Row Far-side Airbag	

Industry-leading



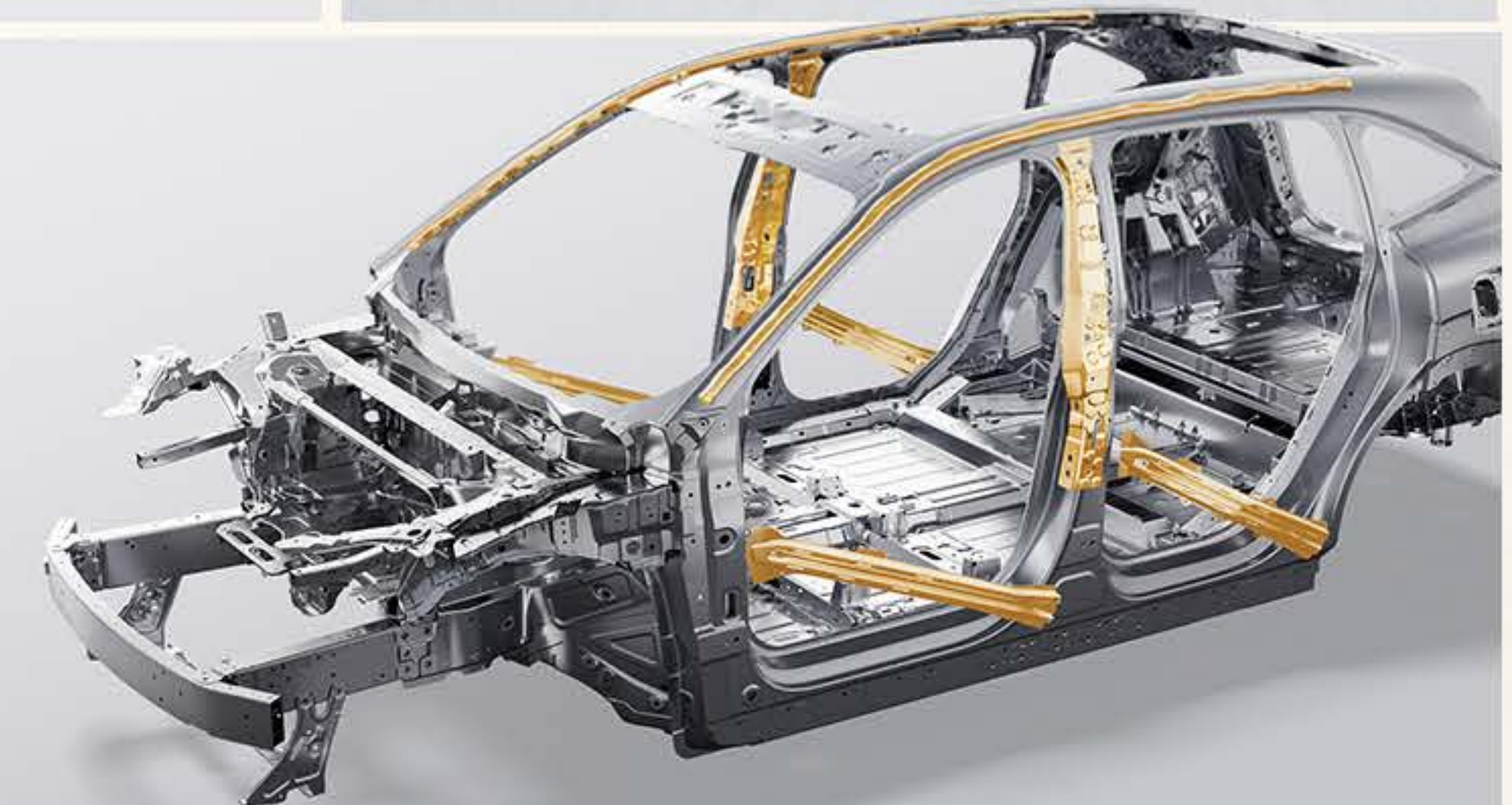
2000MPa Ultra-long One-piece Hot-formed Steel Pillar

World Premiere

"Dome-shaped Armored Body" Safety Structure

83.3% High-strength Steel + Aluminum Alloy

>12m Ultra-high-strength Hot-formed Steel



World's First



Safety from Electromagnetic Radiation in All Scenarios

New Energy Vehicle Safety Technical Assessment (NESTA) and Electromagnetic Safety Evaluation From CATARC

EURO NCAP



ZEEKR 7X
2025 ★★★★★



Auto Lane Change (ALC)



Automatic Parking Assist (APA)

Intelligent Driving Assistance



Superb Sensing Hardware

12 High-definition Cameras	1 Millimeter-wave Radars
12 Ultrasonic Radars	

Intelligent Safety Technology

*EURO NCAP 5-Star Rating awarded for all RWD models.



Crystal White[^]



Onyx Black



Tech Grey



Forest Green



Blue+Silver Roof^{*^}



Purple and White



Black



19"
Multi-spoke Rims



20"
Multi-spoke Rims



21"
Forged Rims^{*^}

*Payable option

[^]Only available for AWD Performance variant.

ZEEKR 7X Specification

Configuration	RWD Standard	RWD Long Range	AWD Performance
Specifications			
Length * Width * Height (mm)	4787*1930*1650	4787*1930*1650	4787*1930*1650
Wheelbase (mm)	2900	2900	2900
Turning circle kerb to kerb (m)	11.6	11.6	11.6
Seating	5	5	5
Performance & Handling			
Battery & Drive unit & Electronic control system			
Full stack 800V high-voltage system	●	●	●
Battery Capacity （kWh）	75	100	100
WLTP EV range target （km）	480*	615*	543*
Battery Type	LFP	NCM	NCM
High-Performance electric drive systems	(Single Motor: RWD SiC PMSM)	(Single Motor: RWD SiC PMSM)	(Dual Motor: Front AMSM + Rear SiC PMSM)
0-100km/h Acceleration Time (s)	~6.0*	~6.0*	~3.8*
Motor peak power （kW）	310	310	475
Motor peak torque （N·m）	440	440	710
Brake energy recovery system	●	●	●
PTM 2.0 thermal management system	●	●	●
800V DC super charging capability	●	●	●
DC Charging Speed 10 to 80% (min)	10.5 450kW	16 420kW	16 420kW
AC Charging Speed 10 to 100% (hour)	4.5 22kW	5.5 22kW	5.5 22kW
3.3kw Vehicle-to-load (V2L)	●	●	●
Chassis System			
Front Suspension: Double Wishbone	●	●	●
Rear Suspension: Multi-link	●	●	●
Continuous control damping system (CCD)	-	-	●
Single chamber air suspension system	-	-	●
Wheel & Tyre Size (Inches)	19	19	20
Front and Rear lateral stabilizer bars	●	●	●
Road feel optimized hydraulic bushing	●	●	●
Speed-sensitive electronic power steering system	●	●	●
IPB intelligent integrated braking system	●	●	●
Exterior Design & Function			
Lighting & Aesthetics			
ZEEKR Stargate Integrated Smart Light Curtain	-	-	●
LED headlamps	●	●	●
LED Daytime running lights	●	●	●
LED Tail lamp	●	●	●
Running turning tail lamp	●	●	●
RGB dynamic ambient lightings	●	●	●
Exterior Design			
Frameless Door	●	●	●
Hidden door handle	●	●	●
E-latch door (with emergency-release)	●	●	●
Intelligent automatic door package	-	-	●
Power liftgate with opening angle memory	●	●	●
Panoramic glass+Power sunshade	●	●	●
Frameless outside rear view mirror: heat, power adjustment, power fold, memory, reverse auto angle adjustment	●	●	●
Rain sensor	●	●	●
Interior Design & Function			
Interior design			
Leather steering wheel	●	●	●
Steering wheel manual adjustment	●	-	-
Steering wheel power adjustment	-	●	●
36 Magic storage capabilities	●	●	●
Seat			
Leatherette seat	●	●	-
NAPPA full-grain top-layer leather seat*	-	-	●
Front seat power adjustment	Driver 14-way/Passenger 10-way	Driver 14-way/Passenger 14-way	Driver 14-way/Passenger 14-way
Front seat memory	●	●	●
Front seat vent/massage	-	●	●

Configuration	RWD Standard	RWD Long Range	AWD Performance
Seat			
Rear seat 10° power recline	●	●	●
Rear seat manual foldable	●	●	●
Rear Side Glass Power Sunshade	-	-	●
Rear Seat OMS Passenger Real-time Status Monitor	●	●	●
Vanity & Dual-color Lighting	●	●	●
Safety & Intelligent Driving System			
Passive Safety System			
Integrated die-casted rear end body structure	●	●	●
12-meters 2000MPa ultra-strength steel	●	●	●
7 Airbags System	●	●	●
Active Safety System*			
ACC (Adaptive Cruise Control) + LCC (Lane Centering Control)	●	●	●
LKA (Lane Keeping Assist) + ELKA (Emergency Lane Departure Correction)	●	●	●
ALC (Automatic Lane Change) with turn light signal inputt	●	●	●
AEB (Automatic Emergency Braking) + FCW (Forward Collision Warning and Mitigation)	●	●	●
PEB (Parking Emergency Brake)	●	●	●
DOW (Door Open Warning)	●	●	●
BSD (Blind Spot Detection)	●	●	●
CMSR (Collision Mitigation Support Rear)	●	●	●
FCTA (Forward Cross-Traffic Assist)	●	●	●
RCTA (Rearward Cross-Traffic Assist)	●	●	●
DPS (Driver Performance Monitor)	●	●	●
HOD (Hands Off Detection)	●	●	●
APA (Automated Parking Assist)	●	●	●
360° Surrounding Camera + Transparent Chassis	●	●	●
Sentry mode	●	●	●
ZEEKR Cabin Experience			
Intelligent Cabin Interaction			
Qualcomm 8295 intelligent cabin computing platform	●	●	●
13.02 inches high-definition cockpit cluster	●	●	●
16 inches 3.5K Mini-LED central screen	●	●	●
36.21 inches AR HUD	-	●	●
ZEEKR Sound 10-speaker audio system	●	-	-
ZEEKR Sound pro 21-speaker 7.1.4 audio system	-	●	●
Dual 50w wireless charger	-	●	●
Tri-zone HVAC	●	●	●
Apple carplay+Android auto	●	●	●
4-zone voice command	●	●	●
Customization			
Exterior Color			
Crystal White	●	●	●
Onyx Black	○	○	○
Tech Grey	○	○	○
Forest Green	○	○	○
Brook Blue (with silver roof)*	-	-	○
Interior Theme			
Black	○	○	○
Purple+White	-	-	●
Wheel			
19 inches multi-spoke wheel hub	●	●	-
20 inches multi-spoke wheel hub	-	-	●
21 inches forged wheel hub	-	-	○

Note with *:

- " - " * denotes standard equipment; "-" denotes absence of the featur; "○" denotes optional equipment (under optional package with additional charge).
- EV range/Acceleration etc. data is based on engineering measurement, which may vary under different testing factors such as site, weather, road conditions, battery level, and payload. It is for reference only.
- DC actual charging speed depends on various factors, e.g. charging station output power, electricity grid workload, ambient temperature etc; 800V DC charging capability indicates maxium capability.
- Active drive system is only as a driving assistance system. It cannot handle all traffic, weather, and road conditions, and cannot replace the driver's control of the vehicle. The driver must always remain attentive, carefully observe the surrounding conditions, and intervene actively when necessary. Please use the relevant functions cautiously in complex traffic situations, adverse weather, special road conditions, etc.
- Seat material denotes application of major touch surface between seat & passengers.
- Brook blue with silver roof body color is not available for 20' black wheel+black deco optional package.
- Zeekr will continuously modify and improve its products, and there may be corresponding changes in vhide equipment, parameters, and supply chain. We will strive to ensure the completeness and accuracy of information; however, due to factors such as uncertainty in screen or paper material, continuous changes in laws and regulations, different interpretations of information by individuals, and potential delays in information updates, there may be discrepancies between the actual vehicle and the provided information. Please refer to the actual vehide as the final basis.

