

FIRST FLOOR - 6,808 SQ FT

6466 NORTH BAY, MIAMI

ANTICIPATED COMPLETION - 2ND QUARTER 2016

This exceptional 11,500 square foot estate combines a level of European-style luxury and exquisite design that has never been seen in Miami. Located on the waterfront, this property makes the most of its commanding sea views, through its breathtaking glass walls, 15-foot high ceilings and unparalleled outdoor living spaces.

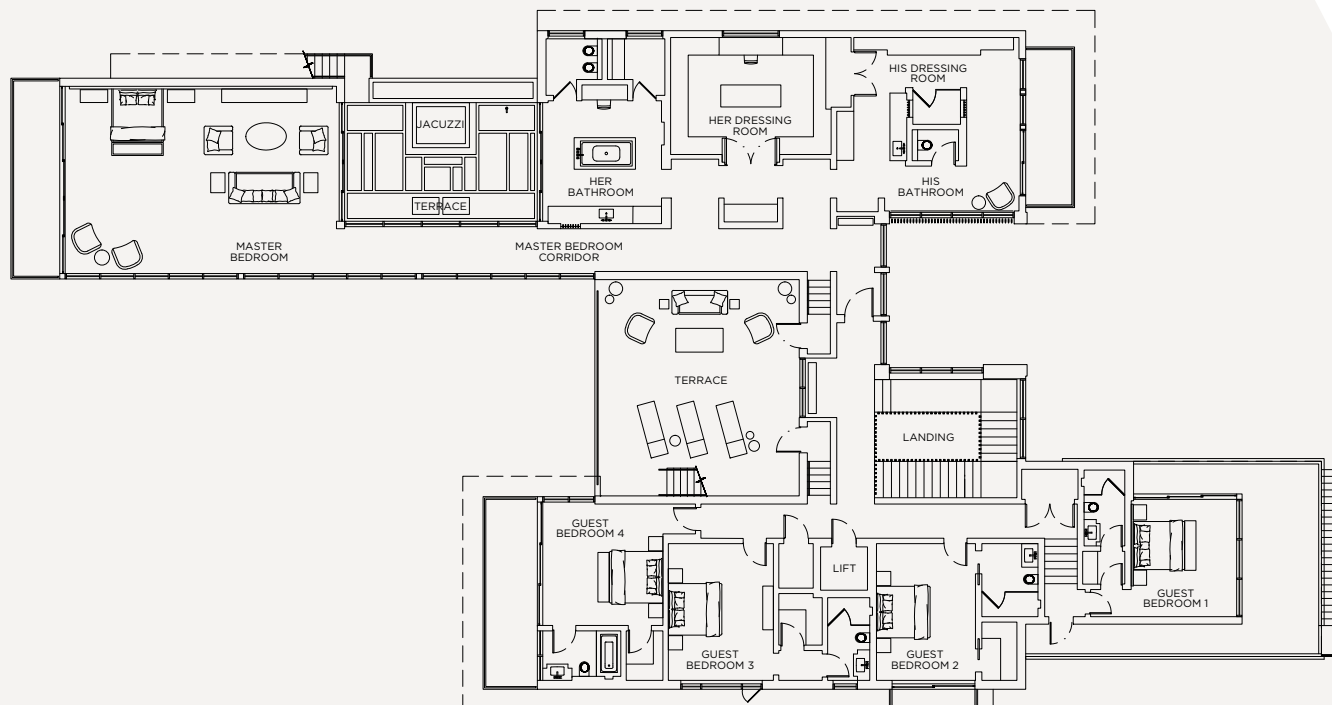
TOTAL HOUSE
11,568 SQ FT

TOTAL LOT
23,605 SQ FT

PALOS
DEVELOPMENTS

FLOORPLAN FOR ILLUSTRATIVE PURPOSES ONLY, NOT DRAWN TO SCALE.

BISCAYNE BAY



NORTH BAY ROAD



SECOND FLOOR - 4,760 SQ FT

PALOS
DEVELOPMENTS

6466 NORTH BAY, MIAMI

ANTICIPATED COMPLETION - 2ND QUARTER 2016

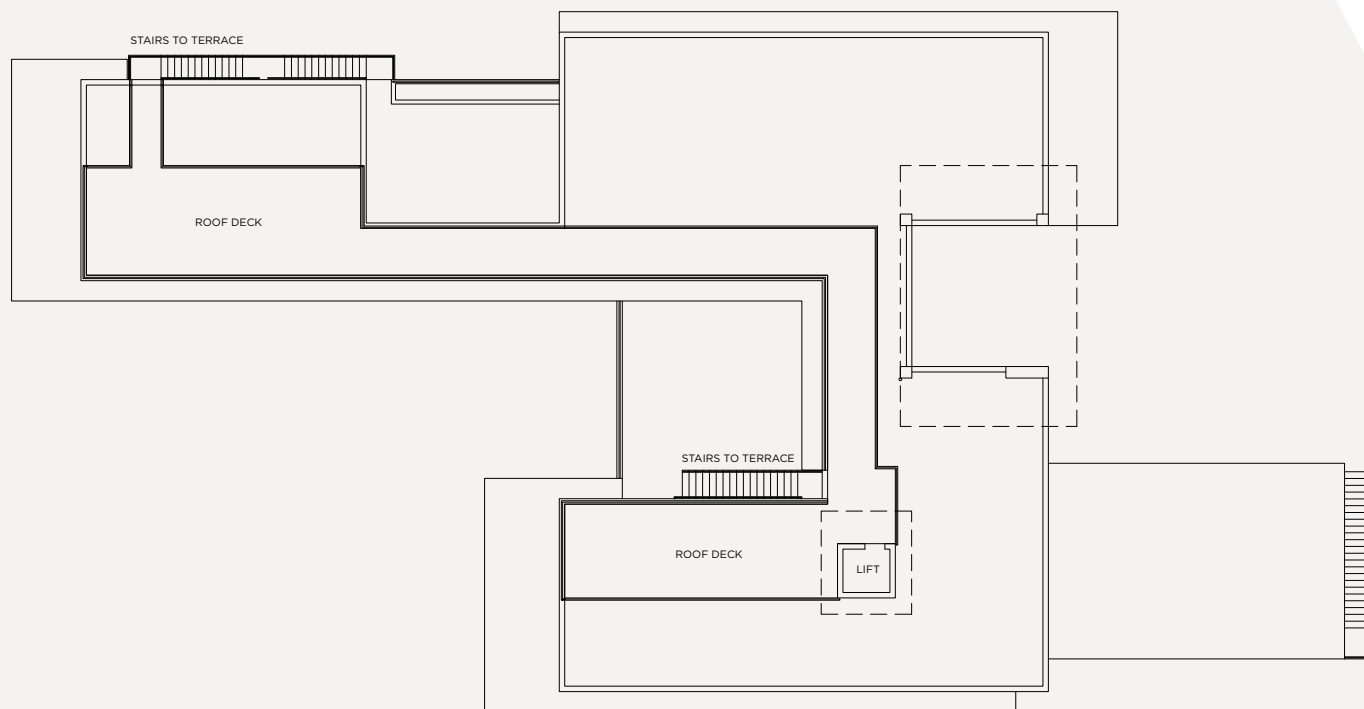
This exceptional 11,500 square foot estate combines a level of European-style luxury and exquisite design that has never been seen in Miami. Located on the waterfront, this property makes the most of its commanding sea views, through its breathtaking glass walls, 15-foot high ceilings and unparalleled outdoor living spaces.

TOTAL HOUSE
11,568 SQ FT

TOTAL LOT
23,605 SQ FT

FLOORPLAN FOR ILLUSTRATIVE PURPOSES ONLY, NOT DRAWN TO SCALE.

BISCAYNE BAY



NORTH BAY ROAD



ROOF TERRACE

PALOS
DEVELOPMENTS

6466 NORTH BAY, MIAMI

ANTICIPATED COMPLETION - 2ND QUARTER 2016

This exceptional 11,500 square foot estate combines a level of European-style luxury and exquisite design that has never been seen in Miami. Located on the waterfront, this property makes the most of its commanding sea views, through its breathtaking glass walls, 15-foot high ceilings and unparalleled outdoor living spaces.

TOTAL HOUSE
11,568 SQ FT

TOTAL LOT
23,605 SQ FT

FLOORPLAN FOR ILLUSTRATIVE PURPOSES ONLY, NOT DRAWN TO SCALE.