



[sydneynewyarseve.com](http://sydneynewyarseve.com)



# Sydney New Year's Eve Guide 2018

## Easy Read

# Ways to be included in New Year's Eve



Watch it on the ABC on TV.

OR ABC iView



Watch it on the City of Sydney website

**[sydneynewyearthseve.com](http://sydneynewyearthseve.com)**



Listen to **KIIS 1065** on the radio.



Go into the city.



Watch from places around the harbour



Watch from Darling Harbour.



## What is on around the harbour



**6pm** Planes flying over



**7pm** Water displays by the fire tug boats



**7.30pm** Welcome to Country and  
Smoking Ceremony



**9pm** Family fireworks

**9.08pm** Calling Country and Harbour of  
Light Parade

**Midnight** Fireworks

## What is on at Darling Harbour



You can also see fireworks at Darling Harbour.

Arrive early to get a good spot.

There will be fireworks at **9pm** and **midnight**.

# Plan your night



Find a place to watch the fireworks.



Get there early.



Some areas will close when they are full.



Some places will sell food and drinks.

Some places will sell alcohol.



You cannot bring glass or alcohol with you.

You may have your bag searched.

## Access for everyone



Some places will be accessible for people with a disability to see the fireworks.



These areas are on the website  
**[sydneynewyearseve.com/accessibility](http://sydneynewyearseve.com/accessibility)**



To book a viewing area you can ring the council  
**02 9265 9325**



Or email **[nyedisability@cityofsydney.nsw.gov.au](mailto:nyedisability@cityofsydney.nsw.gov.au)**



You can listen to a description of the fireworks  
on **ABC Radio Digital** and via **2RPH**.



Closed captions are available on the TV  
and online broadcasts.

## How to get there



Public transport is the best way to get to the city.



There will be extra bus stops in the city.



Circular Quay train station will be **closed from 5pm.**



Milsons Point train station will be **closed from 6pm.**



Ferries will stop service while they get ready for the fireworks.

**They will start again after the midnight fireworks.**

# Getting home



There will be extra trains, buses and ferries to get everyone home.

**They will be very busy.**

You may have to walk further to catch the train or bus.



Use the website to plan your trip  
**transportnsw.info**

Or call **131 500**.



You can use your Opal card to go on the train, bus or ferry.

If you do not have an Opal card you can buy a ticket for 1 trip.

You can find out more at **opal.com.au**





## Roads will be closed



There will be lots of roads closed on the night.

Taxis might not be able to get to roads that are closed. There will be an accessible taxi rank on the corner of Shakespeare Place and Macquarie Street.

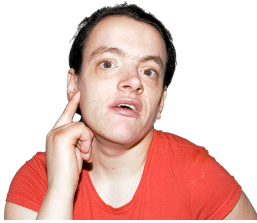


There is a map with all the roads that will be closed on the website.

**[sydneynewyearseve.com/road-closures](http://sydneynewyearseve.com/road-closures)**



# Remember



Follow the signs and listen for announcements.



There will be volunteers around to help you find what you need.



Pick a place to meet your friends or family if you lose them.



**Charge your mobile phone.**

This will help if something goes wrong.



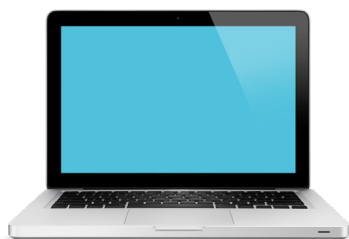
You can only bring plastic bottles – **no glass.**



If you need help you can look for our  
**Spectator Services Volunteers or Take Kare  
Ambassadors**



**Call 000 in an emergency.**



You can go on the website for more information  
on New Year's Eve.

**[sydneynewyearseve.com](http://sydneynewyearseve.com)**

Or contact Accessibility officer

**[nyedisability@cityofsydney.gov.au](mailto:nyedisability@cityofsydney.gov.au)**

**02 9265 9325**



This has been made easy to read by  
**Council for Intellectual Disability**