



[sydneynewyarseve.com](http://sydneynewyarseve.com)

CITY OF SYDNEY 

# Sydney New Year's Eve Guide 2019

Easy read

# Ways to be included in New Years Eve



Watch it on the ABC on TV  
OR ABC iView.



Watch it on the City of Sydney website  
**[sydneynewyearthseve.com](http://sydneynewyearthseve.com)**



Listen to **KIIS 1065** on the radio.



Go into the city.



Watch from places around the harbour.



Watch from Darling Harbour.



## What is on around the harbour



**7pm** Water displays by fire tug boat



**7.30pm** Welcome to Country and Smoking Ceremony



**8pm** Sydney Harbour Bridge projections and plane fly over



**8.30pm** Sydney Harbour Bridge lights up



**9pm** Family fireworks

**9.08pm** Calling Country

**9.15pm** Harbour of Light Parade

**12am** Midnight fireworks

## What is on at Darling Harbour



There are flame and fireworks shows every hour from 7pm at Cockle Bay and fireworks at 9pm and midnight.

# Plan your night



Find a place to watch the fireworks.



Get there early and be prepared for the weather.



Some areas will close when they are full.



Some places will sell food and drinks.

Some places will sell alcohol.



You cannot bring glass or alcohol with you.

You may have your bag searched.

## Access for everyone



Some places will be accessible for people to see the fireworks.



These areas are on the website  
**[sydneynewyearseve.com/accessibility](https://sydneynewyearseve.com/accessibility)**



To book a viewing area you can ring the council  
**02 9265 9325**



Or email  
**[nyeaccessandinclusion@cityofsydney.nsw.gov.au](mailto:nyeaccessandinclusion@cityofsydney.nsw.gov.au)**



You can listen to a description of the fireworks through your local **ABC Radio** station, free-to-air **TV channel 25**, ABC listen app, the ABC website or through **2RPH**.



Closed captions are available on the TV and online.

## How to get there



Public transport is the best way to get to the city.



There will be extra bus stops in the city.



Circular Quay train station will be **closed from 5pm.**



Milsons Point train station will be **closed from 6pm.**



Ferries will start again after the midnight fireworks show.



The Light Rail will stop at 2pm from Circular Quay.

# Getting home



There will be extra trains and buses to get everyone home.

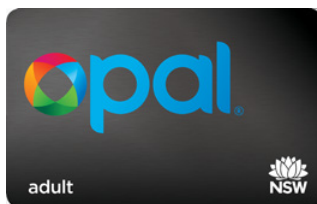
**They will be very busy.**

You may have to walk further to catch the train or bus.



Use the website to plan your trip  
**transportnsw.info**

Or call **131 500**.



You can use an Opal card or your American Express, Mastercard, Visa card to travel on all public transport in Sydney.

If you do not have an Opal card you can buy a ticket for 1 trip.

You can find out more at **opal.com.au**





## Roads will be closed



There will be lots of roads closed on the night.

Taxis might not be able to get to roads that are closed. There will be an accessible taxi rank on the corner of Shakespeare Place and Macquarie Street.

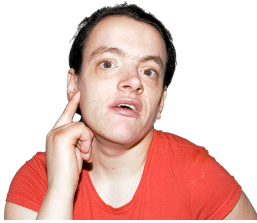


There is a map with all the roads that will be closed on the website.

**[sydneynewyearseve.com/road-closures](http://sydneynewyearseve.com/road-closures)**



# Remember



Follow the signs and listen for announcements.



If you need help you can look for our  
**Spectator Services Volunteers** or  
**Take Kare Ambassadors.**



Pick a place to meet your friends or family  
if you lose them.



**Charge your mobile phone.**

This will help if something goes wrong.



You can only bring plastic or re-usable bottles

– no glass.



**Call 000 in an emergency.**

You can go on the website for more information

on New Year's Eve.



**[sydneynewyearseve.com](http://sydneynewyearseve.com)**

Or contact Accessibility Officer

**[nyeaccessandinclusion@cityofsydney.nsw.gov.au](mailto:nyeaccessandinclusion@cityofsydney.nsw.gov.au)**

**02 9265 9325**



This has been made easy to read by

**Council for Intellectual Disability.**