

# Sliding Door Hardware

Hager Companies offers a full line of high quality, durable sliding door hardware that is the perfect choice for any by-pass, bi-fold, interior wall-mount, decorative barn door and pocket door application your project requires. With Hager's sliding door hardware, you can choose from hundreds of fully tested products, including jump proof box tracks, complete sets and accessories. Just as beneficial, every Hager sliding door hardware product is designed and manufactured to support a broadrange of size and weight requirements, and is specified by some of the world's most demanding architects, designers and builders – meeting or exceeding ANSI requirements.

## TABLE OF CONTENTS

### Table of Contents

General Information .....	3
<b>By-Pass</b> .....	<b>5</b>
9613RS Packaged By-Pass Sets.....	5
9614RS Packaged Sets .....	6
9611CS & HD Packaged Sets .....	7
<b>Bi-Fold</b> .....	<b>9</b>
9570 Bi-Fold .....	9
<b>Pocket Door Kits</b> .....	<b>10</b>
9878CS & HD Packaged Sets .....	10
9628CS   9629CS   9630CS   9631CS .....	11
9850HD & 9852HD.....	12
Pocket Door Components .....	13

<b>Wall-Mount Hardware</b> .....	<b>14</b>
9710HD.....	14
<b>Barn Door Hardware</b> .....	<b>15</b>
9400 Series .....	15
e-Conestoga Barn Door Hardware Series .....	17
<b>Optional Components</b> .....	<b>19</b>

In our effort to streamline our SDH offering and make it easier to do business with Hager, we have enhanced quality and performance and significantly reduced leads times. As part of this new consolidated line, and for your convenience, we have created a quick cross-reference guide to highlight the changes.

	CONSOLIDATED SERIES	NEW PART NUMBER
<b>BI-FOLD SET</b>	9570, 9860, 9861, 9890, 9891	9570RC
<b>BY-PASS SET</b>	9675, 9676, 9611, 9110	9611CS
	9673, 9674	9611CS (Add optional 9622 fascia) <sup>1</sup>
	9885	9611HD (Add optional 9622 fascia) <sup>2</sup>
	9130, 9612, 9875	9611HD
	9514, 9583	9613RS
	9614, 9683	9614RS
<b>WALL MOUNT SET</b>	9710	9710HD
<b>POCKET DOOR SETS</b>	9678, 9110	9878CS
	9878, 9130, 9901	9878HD

**PLEASE READ - The components between new and previous versions are NON-INTERCHANGEABLE**

Note 1: The 9611CS (150 LBS.) Bypass Set with the optional 9622 Fascia becomes the equivalent to previous version 9673 and 9674. The components between new and previous versions are non-interchangeable.

Note 2: The 9611HD (250 LBS.) Bypass Set with the optional 9622 Fascia becomes the equivalent to previous version 9885. The components between new and previous versions are non-interchangeable.

## General Information

Maximum Weight Per Door	Packaged Sets	Description	Hanger / Roller / Parts Bag	Track
<b>By-Pass</b>				
60#	9613RS-48	9613 BY-PASS RS 48" (1219 mm) MIL (non-fascia) - By-pass set for two 24" doors	9625	9623
60#	9613RS-60	9613 BY-PASS RS 60 (1524 mm) MIL (non-fascia)- By-pass set for two 30" doors	9625	9623
60#	9613RS-72	9613 BY-PASS RS 72" (1829 mm)MIL (non-fascia)- By-pass set for two 36" doors	9625	9623
60#	9613RS-96	9613 BY-PASS RS 96" (2438 mm)MIL (non-fascia) - By-pass set for two 48" doors	9625	9623
60#	9614RS-48	9614 BY-PASS RS 48" (1219 mm) MIL (fascia) - By-pass set for two 24" doors	9625	9624
60#	9614RS-60	9614 BY-PASS RS 60 (1524 mm) MIL (fascia)- By-pass set for two 30" doors	9625	9624
60#	9614RS-72	9614 BY-PASS RS 72" (1829 mm)MIL (fascia)- By-pass set for two 36" doors	9625	9624
60#	9614RS-96	9614 BY-PASS RS 96" (2438 mm)MIL (fascia) - By-pass set for two 48" doors	9625	9624
150#	9611CS-48	9611 BY-PASS CS 48" (1219 mm) MIL, 150 lbs. per door, Door thickness from 1-3/8" or 1-3/4" - By-pass set for two 24" doors	9805	9303HD
150#	9611CS-60	9611 BY-PASS CS 60" (1524 mm) MIL, 150 lbs. per door, Door thickness from 1-3/8" or 1-3/4" - By-pass set for two 30" doors	9805	9303HD
150#	9611CS-72	9611 BY-PASS CS 72" (1829 mm) MIL, 150 lbs. per door, Door thickness from 1-3/8" or 1-3/4" - By-pass set for two 36" doors	9805	9303HD
150#	9611CS-96	9611 BY-PASS CS 96" (2438 mm) MIL, 150 lbs. per door, Door thickness from 1-3/8" or 1-3/4"- By-pass set for two 48" doors	9805	9303HD
250#	9611HD-48	9611 BY-PASS HD 48" (1219 mm) MIL, 250 lbs. per door, Door thickness from 1-3/8" or 1-3/4"- By-pass set for two 24" doors	9806	9303HD
250#	9611HD-60	9611 BY-PASS HD 60" (1524 mm) MIL, 250 lbs. per door, Door thickness from 1-3/8" or 1-3/4"- By-pass set for two 30" doors	9806	9303HD
250#	9611HD-72	9611 BY-PASS HD 72" (1829 mm)MIL, 250 lbs. per door, Door thickness from 1-3/8" or 1-3/4", -By-pass set for two 36" doors	9806	9303HD
250#	9611HD-96	9611 BY-PASS HD 96" (2438 mm) MIL, 250 lbs. per door, Door thickness from 1-3/8" or 1-3/4", - By-pass set for two 48" doors	9806	9303HD
<b>Bi-Fold</b>				
125#	9570RC-36	9570 BI-FOLD RC 36" (914 mm) MIL - Bi-fold set for two 18" doors	9805	9303HD
125#	9570RC-48	9570 BI-FOLD RC 48" (1219 mm) MIL 4PNL - Bi-fold set for four 12" doors	9805	9303HD
125#	9570RC-60	9570 BI-FOLD RC 60" (1524 mm) MIL 4PNL - Bi-fold set for four 15" doors	9805	9303HD
125#	9570RC-72	9570 BI-FOLD RC 72" (1829 mm)MIL 4PNL - Bi-fold set for four 18" doors	9805	9303HD
125#	9570RC-96	9570 BI-FOLD RC 96" (2438 mm) MIL 4PNL - Bi-fold set for four 24" doors	9805	9303HD
<b>Pocket Door Sets (Framing Not Included)</b>				
150#	9878CS-72	Aluminum box track & hardware for 1-1/8" & 1-3/4" thick doors - 72" (1829 mm)	9805	9303HD
150#	9878CS-96	Aluminum box track & hardware for 1-1/8" & 1-3/4" thick doors- 96" (2438 mm)	9805	9303HD
250#	9878HD-72	Heavy duty Aluminum box track & hardware for 1-1/8" thick doors and up- 72" (1829 mm)	9806	9303HD
250#	9878HD-96	Heavy duty Aluminum box track & hardware for 1-1/8" thick doors and up- 96" (2438 mm)	9806	9303HD
<b>Pocket Door Framed Kits</b>				
150#	9628CS	9628CS, 108", 150 lbs, Commercial Pocket Door Kit, 2 x 4	9805	9303HD
150#	9629CS	9629CS, 96", 150 lbs, Commercial Pocket Door Kit, 2 x 4	9805	9303HD
150#	9630CS	9630CS, 84", 150 lbs, Commercial Pocket Door Kit, 2 x 4	9805	9303HD
150#	9631CS	9631CS, 80", 150 lbs, Commercial Pocket Door Kit, 2 x 4	9805	9303HD
250#	9850HD-96	9850HD, 96", 250 lbs, Heavy Duty Pocket Door Kit, 2 x 4	9806	9303HD
250#	9850-102	9850HD, 102", 250 LB, 2x4, HEAVY DUTY POCKET KIT	9806	9303HD
250#	9852HD-80	9852HD, 80", 250 LB, 2X6, HEAVY DUTY POCKET KIT	9806	9303HD
250#	9852HD-84	9852HD, 84", 250 lbs, 2x6, Heavy Duty Pocket Door Kit	9806	9303HD

## General Information

Maximum Weight Per Door	Packaged Sets	Description	Hanger / Roller / Parts Bag	Track
<b>Wall Mount Sets</b>				
250#	9710HD-72	9710 WL MNT HD 72" Clear	9806	9703HD
250#	9710HD-96	9710 WL MNT HD 96" Clear	9806	9703HD
250#	9710HD-144	9710 WL MNT HD 144" Clear	9806	9703HD
250#	9710HD-72	9710 WL MNT HD 72" Black	9806	9703HD
250#	9710HD-96	9710 WL MNT HD 96" Black	9806	9703HD
250#	9710HD-144	9710 WL MNT HD 144" Black	9806	9703HD
<b>9400 Series Barn Door</b>				
250#	9432-78	9432 TOP MOUNT STICK 2m (78-3/4") SS ROUND RAIL	1-269-8672	N/A
250#	9432-96	9432 TOP MOUNT STICK 2m (96-3/4") SS ROUND RAIL	1-269-8672	N/A
250#	9436-78	9436 FACE MNT STRAP STICK 2m (78-3/4") SS RD RAIL	1-269-8672	N/A
250#	9436-96	9436 FACE MNT STRAP STICK 2m (96-3/4") SS RD RAIL	1-269-8672	N/A
<b>e-Conestoga Barn Door</b>				
250#	9456-72	9456 Flat Track Steel Black Top Mnt 72" Track Kit	1-269-8652	1-269-8658
250#	9456-96	9456 Flat Track Steel Black Top Mnt 96" Track Kit	1-269-8652	1-269-8660
250#	9457-72	9457 Flat Track Steel Black Face Mnt 72" Track Kit	1-269-8659	1-269-8658
250#	9457-96	9457 Flat Track Steel Black Face Mnt 96" Track Kit	1-269-8659	1-269-8660

## By-Pass - 9613RS (Non-Fascia) Packaged Sets

### PRODUCT INFORMATION

- Door weight up to 60 lbs. per door with single wheel hanger
- Door thickness 1-3/8"
- Track is extruded aluminum with "V" shaped rails

### SYSTEM INCLUDES (9625 PARTS BAG)

- Aluminum track (No fascia)
- (4) 1-wheel hangers
- (2) Flush cup pulls (2-1/8" ID)
- (1) Floor channel door guide
- Parts bag

### APPLICATIONS

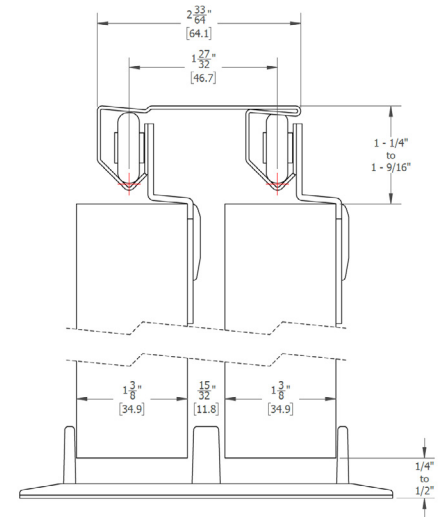
- Commercial, Healthcare, Hospitality, Office, Residential

### AVAILABLE LENGTHS

- 48", 60", 72", 96"

### CERTIFICATIONS

- Meets performance requirements ANSI/BHMA A156.14 (Grade 1) for sliding doors by exceeding 100,000 cycles
- Type D02411-60



**Note: 9613RS replaces 9514 & 9583 - The components between new and previous versions are NON-INTERCHANGEABLE**

Part Number	Description
9613RS-48	9613 BY-PASS RS 48" (1219 mm) MIL (non-fascia) - By-pass set for two 24" doors
9613RS-60	9613 BY-PASS RS 60 (1524 mm) MIL (non-fascia)- By-pass set for two 30" doors
9613RS-72	9613 BY-PASS RS 72" (1829 mm)MIL (non-fascia)- By-pass set for two 36" doors
9613RS-96*	9613 BY-PASS RS 96" (2438 mm)MIL (non-fascia) - By-pass set for two 48" doors

### 9613RS (Non-Fascia) Replacement Components

Part Number	Description
9623-96	Replacement track for 9613RS (Non-Fascia)
9625	Replacement 2-dr Parts Bag for 9613RS and 9614RS, Includes: (4 each 1/2" offset single hangers, adjustable floor guide and 2 each SN 2-1/8" pulls and all required hardware)

\*Note: Expandable to additional doors (i.e. 3-4 door configuration) The purchase of Parts Bag 9625 is required for each door.

## By-Pass - 9614RS (Fascia) Packaged Sets

### PRODUCT INFORMATION

- Aluminum track with fascia
- Door weight up to 60 lbs. per door with single wheel hanger
- Door thickness 1-3/8"
- Track is extruded aluminum with "V" shaped rails

### SYSTEM INCLUDES (9625 PARTS BAG)

- Aluminum track (Fascia)
- (4) 1-wheel hangers
- (2) Flush cup pulls (2-1/8" ID)
- (1) Floor channel door guide
- Parts bag

### APPLICATIONS

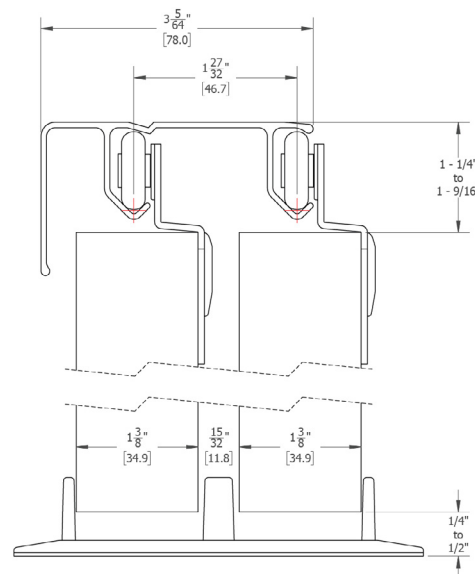
- Commercial, Healthcare, Hospitality, Office, Residential

### AVAILABLE LENGTHS

- 48", 60", 72", 96"

### CERTIFICATIONS

- Meets performance requirements ANSI/BHMA A156.14 (Grade 1) for sliding doors by exceeding 100,000 cycles
- Type D02411-60



**Note: 9614RS replaces 9514 & 9583 - The components between new and previous versions are NON-INTERCHANGEABLE**

Part Number	Description
9614RS-48	9614 BY-PASS RS 48" (1219 mm) MIL (fascia) - By-pass set for two 24" doors
9614RS-60	9614 BY-PASS RS 60 (1524 mm) MIL (fascia)- By-pass set for two 30" doors
9614RS-72	9614 BY-PASS RS 72" (1829 mm) MIL (fascia)- By-pass set for two 36" doors
9614RS-96*	9614 BY-PASS RS 96" (2438 mm) MIL (fascia) - By-pass set for two 48" doors

### 9614RS (Fascia) Replacement Components

Part Number	Description
9624-96	Replacement track for 9614RS (Fascia)
9625	Replacement 2-dr Parts Bag for 9613RS and 9614RS, Includes: (4 each 1/2" offset single hangers, adjustable floor guide and 2 each SN 2-1/8" pulls and all required hardware)

\*Note: Expandable to additional doors (i.e. 3-4 door configuration) The purchase of Parts Bag 9625 is required for each door.



## By-Pass - 9611CS Packaged Sets

### PRODUCT INFORMATION

- Door weight up to 150 lbs. per door
- Door thickness 1-3/8" or 1-3/4"
- Quick-release hangers allow for easy door hanging and removal
- Optional soft-close (1-269-8651) for doors up to 150 lbs.

### SYSTEM INCLUDES (9621CS PARTS BAG)

- (2) 9303HD Aluminum track
- (4) 9805 1-wheel hangers
- (2) Flush cup pulls (2-1/8" ID)
- (1) Floor channel door guide
- Parts bag

### APPLICATIONS

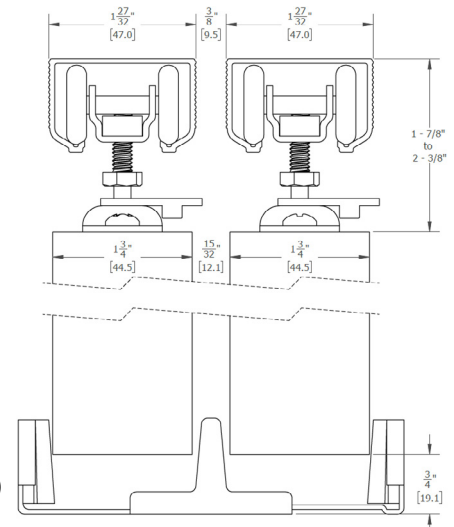
- Commercial, Healthcare, Hospitality, Office, Residential

### AVAILABLE LENGTHS

- 48", 60", 72", 96"

### CERTIFICATIONS

- Meets performance requirements ANSI/BHMA A156.14 (Grade 1) for sliding doors by exceeding 100,000 cycles
- Type D02411-60



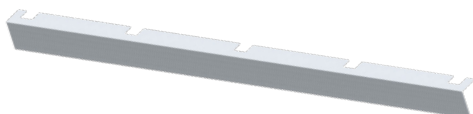
Part Number	Description
<b>Note: 9611CS replaces 9675, 9676, 9611, 9110 - The components between new and previous versions are NON-INTERCHANGEABLE</b>	
9611CS-48	9611 BY-PASS RS 48" (1219 mm) MIL (fascia) - By-pass set for two 24" doors
9611CS-60	9611 BY-PASS CS 60" (1524 mm) MIL, 150 lbs. per door, Door thickness from 1-3/8" or 1-3/4" - By-pass set for two 30" doors
9611CS-72	9611 BY-PASS CS 72" (1829 mm) MIL, 150 lbs. per door, Door thickness from 1-3/8" or 1-3/4" - By-pass set for two 36" doors
9611CS-96	9611 BY-PASS CS 96" (2438 mm)MIL (fascia) - By-pass set for two 48" doors

### 9611CS Replacement Components

Part Number	Description
9303HD-72	9303HD 72" MIL - Replacement Track
9303HD-96	9303HD 96" MIL - Replacement Track
9303HD-144	9303HD 144" MIL - Replacement Track
9621-CS	Replacement 2-dr (Parts Bag) set for 9611CS, Includes: (Qty. 4-wheel hanger for 150 LB, 1-3/8 to 1-3/4" floor guide, 2 each SN 2-1/8" pulls and all required hardware)

### 9622 Optional (2-11/16", 68.3mm) Grooved Fascia for 9611CS and 9611HD

Part Number	Description
<b>Note 1: The 9611CS (150 LBS.) Bypass Set with the optional 9622 Fascia becomes the equivalent to previous version 9673 and 9674. The components between new and previous versions are non-interchangeable.</b>	
9622-48	'L' Shaped Aluminum Fascia for 9611CS & 9611HD, 48" - All tracks have pre-punched mounting slots for ease of installation
9622-60	'L' Shaped Aluminum Fascia for 9611CS & 9611HD, 60" - All tracks have pre-punched mounting slots for ease of installation
9622-72	'L' Shaped Aluminum Fascia for 9611CS & 9611HD, 72" - All tracks have pre-punched mounting slots for ease of installation
9622-96	'L' Shaped Aluminum Fascia for 9611CS & 9611HD, 96" - All tracks have pre-punched mounting slots for ease of installation



## By-Pass - 9611HD Packaged Sets

### PRODUCT INFORMATION

- Door weight up to 250 lbs. per door
- Door thickness 1-3/8" or 1-3/4"
- Quick-release hangers allow for easy door hanging and removal

### SYSTEM INCLUDES (9621HD PARTS BAG)

- (2) 9303HD Aluminum track
- (4) 9806 1-wheel hangers
- (2) Flush cup pulls (2-1/8" ID)
- (1) Floor channel door guide
- 9621

### APPLICATIONS

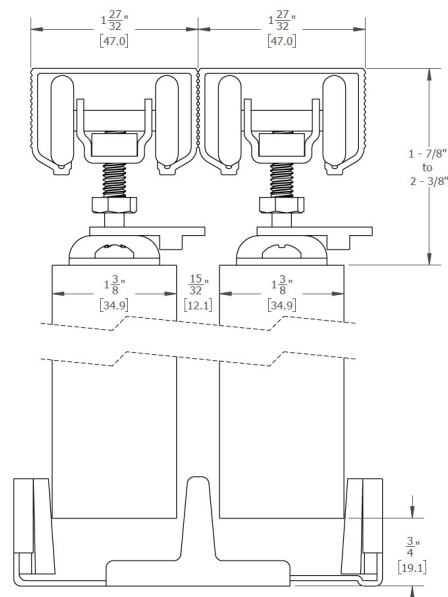
- Commercial, Healthcare, Hospitality, Office, Residential

### AVAILABLE LENGTHS

- 48", 60", 72", 96"

### CERTIFICATIONS

- Meets performance requirements ANSI/BHMA A156.14 (Grade 1) for sliding doors by exceeding 100,000 cycles
- Type D02411-60



Part Number	Description
<b>Note: 9611HD replaces - 9130, 9612, 9875 The components between new and previous versions are NON-INTERCHANGEABLE</b>	
9611HD-48	9611 BY-PASS HD 48" (1219 mm) MIL, 250 lbs. per door, Door thickness from 1-3/8" or 1-3/4"- By-pass set for two 24" doors
9611HD-60	9611 BY-PASS HD 60" (1524 mm) MIL, 250 lbs. per door, Door thickness from 1-3/8" or 1-3/4"- By-pass set for two 30" doors
9611HD-72	9611 BY-PASS HD 72" (1829 mm)MIL, 250 lbs. per door, Door thickness from 1-3/8" or 1-3/4", -By-pass set for two 36" doors
9611HD-96	9611 BY-PASS HD 96" (2438 mm) MIL, 250 lbs. per door, Door thickness from 1-3/8" or 1-3/4", - By-pass set for two 48" doors

### 9611HD Replacement Components

Part Number	Description
9303HD-72	9303HD 72" MIL - Replacement Track
9303HD-96	9303HD 96" MIL - Replacement Track
9303HD-144	9303HD 144" MIL - Replacement Track
9621-HD	Replacement 2-dr (Parts Bag) set for 9611HD, Includes: (Qty. 4-wheel hanger for 250 LB, 1-3/8 to 1-3/4" floor guide, 2 each SN 2-1/8" pulls and all required hardware)

### 9622 Optional (2-11/16", 68.3mm) Grooved Fascia for 9611CS and 9611HD

Part Number	Description
<b>Note: The 9611HD (250 LB) bypass set with the optional 9622 fascia becomes the equivalent to previous version 9885. The components between new and previous versions are NON-INTERCHANGEABLE</b>	
9622-48	'L' Shaped with pre-punched mounting slots - Aluminum Fascia for 9611CS & 9611HD, 48"
9622-60	'L' Shaped with pre-punched mounting slots - Aluminum Fascia for 9611CS & 9611HD, 60"
9622-72	'L' Shaped with pre-punched mounting slots - Aluminum Fascia for 9611CS & 9611HD, 72"
9622-96	'L' Shaped with pre-punched mounting slots - Aluminum Fascia for 9611CS & 9611HD, 96"





## Bi-Fold - 9570RC

### Simple to Install, Built to Last

The better engineered your Bi-Fold door hardware is, the smoother the operation of your doors will be — over the lifetime of the installation. Smart Homeowners, Contractors, and Architects insist on Hager's sliding hardware sets and components to ensure trouble-free installation and reliable performance

### PRODUCT INFORMATION

- Door weight up to 125 lbs. per panel pair
- Door thickness from 1-1/8" - 1-3/4"
- Track is extruded aluminum jump-proof style with "V" shaped rails

### SYSTEM INCLUDES (9581 PARTS BAG)

- 9303HD Aluminum track
- 9805 wheel hangers
- Parts bag

### APPLICATIONS

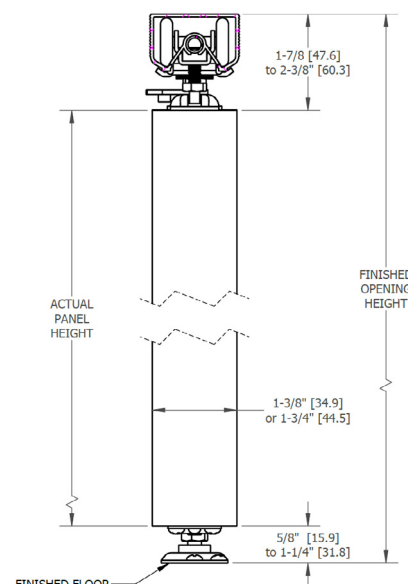
- Commercial, Healthcare, Hospitality, Office, Residential

### AVAILABLE LENGTHS

- 48", 60", 72", 96"

### CERTIFICATIONS

- Meets performance requirements ANSI/BHMA A156.14 (Grade 1) for sliding doors by exceeding 100,000 cycles
- Type D02411-60



Part Number	Description
<b>Note: 9570RC replaces 9570, 9860, 9861, 9890, 9891 - The components between new and previous versions are NON-INTERCHANGEABLE</b>	
9570RC-36	9570 BI-FOLD RC 36" (914 mm) MIL - Bi-fold set for two 18" doors
9570RC-48	9570 BI-FOLD RC 48" (1219 mm) MIL 4PNL - Bi-fold set for four 12" doors
9750RC-60	9570 BI-FOLD RC 60" (1524 mm) MIL 4PNL - Bi-fold set for four 15" doors
9570RC-72	9570 BI-FOLD RC 72" (1829 mm) MIL 4PNL - Bi-fold set for four 18" doors
9570RC-96	9570 BI-FOLD RC 96" (2438 mm) MIL 4PNL - Bi-fold set for four 24" doors

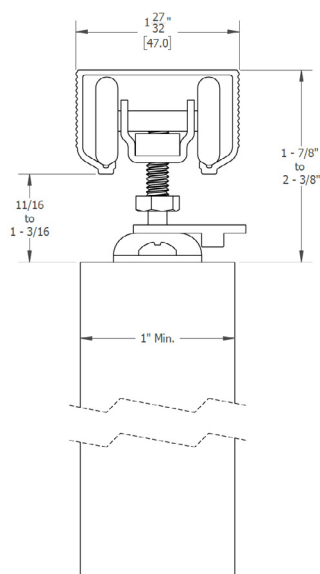
### 9570RC Replacement Components

Part Number	Description
9303HD-72	9303HD 72" MIL - Replacement Track
9303HD-96	9303HD 96" MIL - Replacement Track
9303HD-144	9303HD 144" MIL - Replacement Track
9581	Parts Bag Pivot set includes the lead 4-wheel roller, top pivot pin and track bracket, bottom pivot bracket and pins, wood knob, one aligner and all required hardware

## Pocket Door - 9878CS & 9878HD Pocket Door Kits (Framing Not Included)

Pocket door aka “doors that vanish”— Hager Companies offers innovative design options for saving space and complementing classic and contemporary decors. Hager’s pocket-door hardware is ideal for single and bi-parting pocket-door configurations in rough openings from six to sixteen feet. Aluminum tracks support doors up to 250 lbs. and are designed for simple installation and durable performance. Hager’s 4-wheel hanger design provides an ultra-smooth gliding movement.

Part Number	Description	Part Number	Description
9878CS:	Features / Specifications	9878HD	Features / Specifications
	• Door weight up to 150 lbs		• Door weight up to 250 lbs
	• Door thickness from 1-1/8" - 1-3/4"		• Door thickness from 1-1/8" - 1-3/4"
	• Track is extruded aluminum jump-proof style with "V" shaped rails		• Track is extruded aluminum jump-proof style with "V" shaped rails
	• Available in lengths: 72" & 96"		• Available in lengths: 72" & 96"
	• Conforms to ANSI A156.14		• Conforms to ANSI A156.14
	• Type: D8681, D8711		*• Type: D8681, D8711
	• Optional soft-close (1-269-8651) for doors up to 150 lbs		
	System Includes		System Includes
	• 9803HD Track		• 9803HD Track
	• (2)- 9805 hanger		• (2)- 9806 hanger
	• Guides		• Guides
	• Bumper		• Bumper
Part Number	Description		
Note: 9878CS replaces 9678 / 9878HD replaces 9878 - The components between new and previous versions are NON-INTERCHANGEABLE			
9878CS-72	Pocket Door Set - 6' (1829 mm) for 3'0" (914 mm) door - 150 lbs.		
9878CS-96	Pocket Door Set - 8' (2438 mm) for 4'0" (1219 mm) door - 150 lbs.		
9878HD-72	Pocket Door Set - 6' (1829 mm) for 3'0" (914 mm) door - 250 lbs		
9878HD-96	Pocket Door Set - 8' (2438 mm) for 4'0" (1219 mm) door - 250 lbs.		



# Pocket -9600 Comm. Series Pocket Door Frame Kits -9628CS |9629CSCS |9630CS |9631CS

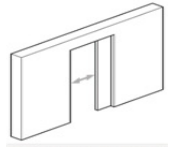
## FEATURES

- Commercial Series Pocket Door Kit
- Meets performance requirements of ANSI/BHMA A156.14 (Grade 1) for sliding doors by exceeding 100,000 cycles in operation
- Type: S02311-150
- ADA Compliant

**Pocket Door Kit**

## SPECIFICATIONS

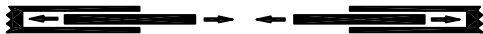
- V-groove jump proof aluminum track
- Pre-assembled header assembly goes up quickly
- Easy door installation and removal for painting and repair
- Real wood split studs, size 3/4" x 1-3/4" (19 mm x 44 mm) width relative to length, steel encased for rigidity and to prevent fastener penetration into the pocket
- Header Assembly attaches to rough studs at both ends - split studs nail to Header Assembly - no connections to rough header
- 2 pair of split studs with wood inserts
- See chart below for appropriate kit



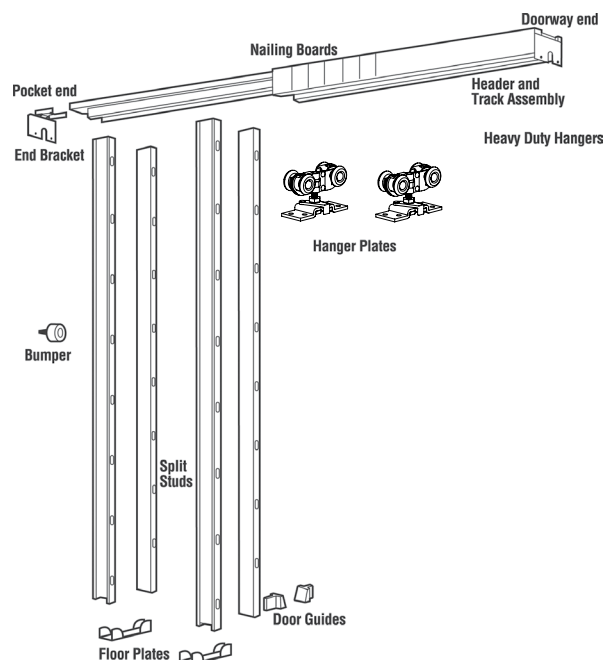
Part #	Max Door Weight	Door Thickness*	Door Width	Door Height	Hanger Bearings
9628CS	150 lbs (68 kg)	1-3/8" - 1-3/4" (35 mm - 44 mm)	3'0" (914 mm)	9'0" (2743 mm)	9805
9629CS	150 lbs (68 kg)	1-3/8" - 1-3/4" (35 mm - 44 mm)	3'0" (914 mm)	8'0" (2438 mm)	9805
9630CS	150 lbs (68 kg)	1-3/8" - 1-3/4" (35 mm - 44 mm)	3'0" (914 mm)	7'0" (2134 mm)	9805
9631CS	150 lbs (57 kg)	1-3/8" - 1-3/4" (35 mm - 44 mm)	3'0" (914 mm)	6'8" (2032 mm)	9805

For doors in excess of 150 lbs, we recommend the use of our 9850HD or 9852HD Pocket Door kits

Installation Notes: For bi-parting doors, use Hager Mullion Converging Kit 9639CS (sold separately). Use of Soft Close mechanism exceeds ADA 5 lb. of opening force threshold.



Joins two pocket door frames to make one large doorway. Rough opening width changes to door width multiplied by four.




## Contents

Quantity	Description
1	2"x4" Header assembly
2	Pair of split studs
2	Rollers - 150 lbs
2	Hanger Plates
1	Rubber Bumper
1	Pair of floor guides
1	Hanger wrench
2	Floor plates
1	Doorway end bracket
1	Pocket end bracket

Optional Soft Close mechanism (1-269-8651) available - Sold Separately

# Pocket - 9800 Heavy-Duty Pocket Door Frame Kits - 9850HD for 2" X 4" Walls | 9852HD for 2" X 6" Walls

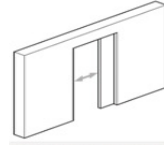
## FEATURES

- Heavy-Duty Series Pocket Door Kit
- Meets performance requirements of ANSI/BHMA A156.14 (Grade 1) for sliding doors by exceeding 100,000 cycles in operation
- Type: D01311-250
- ADA Compliant 

# Pocket Door Kit

## SPECIFICATIONS

- For doors 1-3/8" - 1-3/4" (35 mm - 44 mm) thick, up to 4'0" (1219 mm) wide and 8'0" (2438 mm) or 8'6" (2591 mm) high, weighing up to 250 lbs. (113 kg)
- Pre-assembled header assembly goes up quickly
- Heavy-Duty, V-groove, jump-proof aluminum track
- Real wood split studs, size 3/4" x 1-3/4" (19 mm x 44 mm) width relative to length, steel encased for rigidity and to prevent fastener penetration into the pocket
- Header Assembly attaches to rough studs at both ends - split studs nail to Header Assembly - no connections to rough header
- 3 Pairs of split studs with wood inserts for 9850HD
- 2 Pairs of split studs with wood inserts for 9852HD
- See chart below for appropriate kit

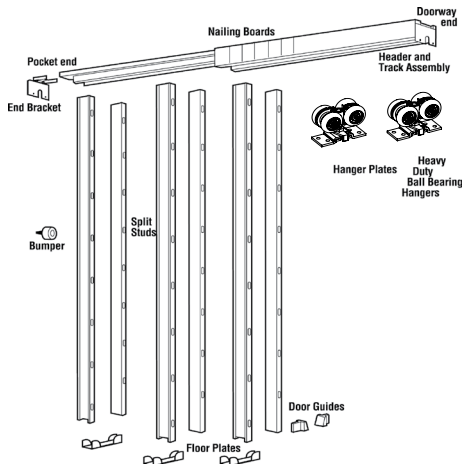


Part #	Max Door Weight	Door Thickness*	Door Width	Door Height	Hanger Bearings
9850HD-96	250 lbs (57 kg)	1-3/8" - 1-3/4" (35 mm - 44 mm)	4'0" (1219 mm)	8'0" (2438 mm)	9806 Ball Bearing
9850HD-102	250 lbs (113 kg)	1-3/8" - 1-3/4" (35 mm - 44 mm)	4'0" (1219 mm)	8'6" (2591 mm)	9806 Ball Bearing
9852HD for 2' X 6' Walls					
9852HD-80	250 lbs (113 kg)	1-3/8" - 1-3/4" (35 mm - 44 mm)	3'0" (914 mm)	6'8" (2032 mm)	9806 Ball Bearing
9852HD-84	250 lbs (113 kg)	1-3/8" - 1-3/4" (35 mm - 44 mm)	3'0" (914 mm)	7'0" (2134 mm)	9806 Ball Bearing

Installation Notes: For bi-parting doors, use Hager Mullion Converging Kit 9639CS (sold separately). Use of Soft Close mechanism exceeds ADA 5 lb. of opening force threshold.



Joins two pocket door frames to make one large doorway. Rough opening width changes to door width multiplied by four.



## 9850HD Contents

Quantity	Description
1	2" x 4" Header assembly
3	Pairs of split studs
2	Rollers - 250 lbs
2	Hanger Plates
1	Rubber Bumper
1	Pair of floor guides
1	Hanger wrench
3	Floor plates for 1-3/8" thick doors
3	Floor plates for 1-3/4" thick doors
6	Shims
1	Doorway end bracket
1	Pocket end bracket

## 9852HD Contents

Quantity	Description
1	2" x 6" Header assembly
3	Pairs of split studs
2	Rollers - 250 lbs
2	Hanger Plates
1	Rubber Bumper
1	Pair of floor guides
1	Hanger wrench
2	4" Floor Plates
1	Doorway end bracket
1	Pocket end bracket

Optional Soft Close mechanism (1-269-8651) available - Sold Separately

## Pocket - 9600 Commercial Series & 9800 Heavy-Duty Pocket Door Framed Kits Replacements / Components



### 1-269-8651 Soft Close Mechanism

- Gently guides door to an open or closed position
- Door weight up to 150 lbs (68 kg)



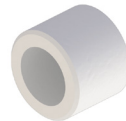
### 9805 4-Wheel Hanger

- For doors up to 150 lbs (68 kg)

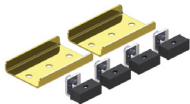


### 9806 4-Wheel Ball Bearing Series Hanger

- For doors up to 250 lbs. (113 kg)

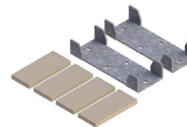


### 9881CS Rubber Bumper



### 9639CS Mullion Converging Kit

- Joins two frames in the middle of the doorway
- For joining 9628CS, 9629CS, 9630CS, 9631CS
- 9850HD and 9852HD pocket door kits



### 9634CS 1-3/4" Pocket Door Adapter Kit

Materials: Galvanized steel and wood shims

Clearance: 1/8" (3 mm) on each side of a 1-3/4" (44 mm) door

Notes: • Used with 1-3/4" (44 mm) doors by allowing clearance between door and jamb



### 9883CS Two Piece Pocket Door Guide

- Two pieces per door required



### 9889CS Non-Adjustable Floor Guide

Notes: For 1-3/8" (35 mm) doors

## Wall-Mount Hardware - 9710HD

Hager Companies' wall-mount sliding door hardware is designed to blend seamlessly with any interior décor — from a contemporary uptown loft, to a more traditional environment. This architecturally-focused design delivers a clean, finished look to any interior doorway or room divider (from two to six foot openings) while providing maximum space utilization. Hager's 9710HD Wall-Mount system is available in clear anodized and black finishes. Quiet four-wheel ball bearing carriers support doors up to 250 lbs. Hardware supports one- and two-door applications.

### PRODUCT INFORMATION

- Door weight up to 250 lbs.
- Door thickness from 1-1/8" - 1-3/4"
- Finishes: Available in clear anodized & black (DBZ no longer available)

### SYSTEM INCLUDES

- 9303HD Aluminum track
- 9806 wheel hangers
- Parts bag
- Fascia
- End Caps

### APPLICATIONS

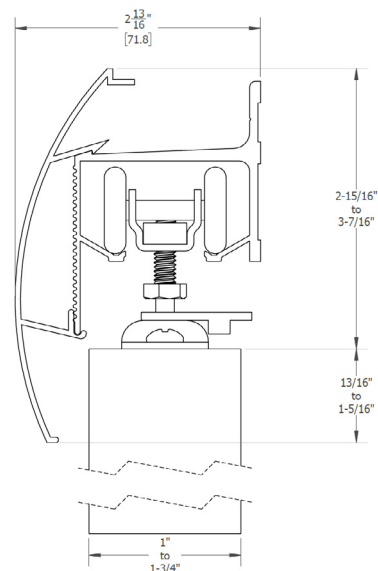
- Commercial, Healthcare, Hospitality, Office, Residential

### AVAILABLE LENGTHS

- 72", 96", 144"

### CERTIFICATIONS

- Meets performance requirements ANSI/BHMA A156.14 (Grade 1) for sliding doors by exceeding 100,000 cycles
- Type D02411-60
- Door thickness from 1-1/8" - 1-3/4"
- Finishes: Available in clear anodized & black



Part Number	Description
<b>Note: 9710HD replaces 9710. Also, black replaces DBZ - which is no longer available - The components between new and previous versions are NON-INTERCHANGEABLE</b>	
9710HD-72 CLR	9710HD-72 CLR Packaged Sets for heavy duty single doors and bi-parting doors up to 250 lbs. (113kg)
9710HD-96 CLR	9710HD-96 CLR Packaged Sets for heavy duty single doors and bi-parting doors up to 250 lbs. (113kg)
9710HD-144 CLR	9710HD-144 CLR Packaged Sets for heavy duty single doors and bi-parting doors up to 250 lbs. (113kg)
9710HD-72 BLA	9710HD-72 BLA Packaged Sets for heavy duty single doors and bi-parting doors up to 250 lbs. (113kg)
9710HD-96 BLA	9710HD-96 BLA Packaged Sets for heavy duty single doors and bi-parting doors up to 250 lbs. (113kg)
9710HD-144 BLA	9710HD-144 BLA Packaged Sets for heavy duty single doors and bi-parting doors up to 250 lbs. (113kg)

Part Number	Description
<b>Note: 9710HD Wall-Mount Replacement Parts - Description - The components between new and previous versions are NON-INTERCHANGEABLE</b>	
9703HD-72	9703HD WL MNT HD 72" MIL (Track)
9703HD-96	9703HD WL MNT HD 96" MIL (Track)
9704-72 CLR	9704 WL MNT 72" CLR (Fascia)
9704-72 BLA	9704 WL MNT 72" BLA (Fascia)
9704-96 CLR	9704 WL MNT 96" CLR (Fascia)
9704-96 BLA	9704 WL MNT 96" BLA (Fascia)
9705 CLR	9705 WL MNT PLASTIC CLR (2- pk Ploybag End Cap)
9705 BLA	9705 WL MNT PLASTIC BLACK (2-Pack Poly Bag End Cap)
1-159-0003	1-159-0003 Center Stop Bumpers
1-569-0004	1-569-0004 Wall-Mount Adjustable Fin Guide



## 9400 Barn Door Hardware

Hager Companies premium Stainless Steel Sliding Barn Door Hardware System with versatile options for glass or wood doors. A seamless fit for commercial or residential applications, the Stainless Steel Sliding Barn Door Hardware System offers seven styles of door hangers complimenting any décor.

### FEATURES

- 304 stainless steel track and hangers nylon coated rollers
- Conforms to ANSI BHMA A156.14-2007
- Grade 1 for sliding doors by exceeding 100,000 cycles in operation

### SPECIFICATIONS

- Door weight up to 250 lbs
- Wood doors 1-3/4" thick - top-mount hangers
- Door bottom 3/8" undercut
- Glass doors 3/8" to 1/2" thick - face-mount hangers

### SLIDING BARN DOOR



Hager Part Number	Description
<b>Stainless Steel 78" Kits</b>	
<b>Top Mount</b>	
9432-78	Top Mount Stick 2m (78-3/4") SS Round Rail
<b>Face Mount</b>	
9436-78	Face mount Strap Stick 2m (78-3/4") SS Round Rail
<b>Stainless Steel 96" Kits</b>	
<b>Top Mount</b>	
9432-96	Top Mount Stick 2m (96-3/4") SS Round Rail
<b>Face Mount</b>	
9436-96	Face mount Strap Stick 2m (96-3/4") SS Round Rail
<b>Accessories</b>	
1-269-8665	Tool set for 05WG; 06WG; 07WG (Round Rail)
1-269-8666	Tool set for 01W; 02W (Round Rail)
1-269-8667	End Cap
1-269-8668	Guide for Wooded Door
1-269-8669	Door Stop
1-269-8670	Guide for Glass Door
1-269-8671	Top Mount Stick Sliding Door Roller for Wood, SS304 Satin
1-269-8672	Top Mount Dual Wheel Sliding Door Roller for Wood, SS304 Satin
1-269-8673	Top Mount Spoke Wheel Sliding Door Roller for Wood, SS304 Satin
1-269-8674	Strap Stick Sliding Door Roller for Wood and Glass, SS304 Satin
1-269-8675	Strap Dual Wheel Sliding Door Roller for Wood and Glass, SS304 Satin
1-269-8676	Strap Triangle Sliding Door Roller for Wood and Glass, SS304 Satin
1-269-8677	Flat Rail Stick Sliding Door Carrier for Wood SS304 Satin
1-269-8678	Flat Rail Door Stopper Left, SS304 Satin
1-269-8679	Flat Rail Door Stopper Right, SS304 Satin
1-269-8680	Flat Rail Anti Jump
1-269-8663	Round Rail Connector SS304 Satin Nickel
1-269-8664	Flat Rail Connector SS304 Satin Nickel

## Barn Door Hardware - 9400 Series

### 9432 PACKAGED SETS

#### Top Mount Stick 2m SS Round Rail

##### FEATURES

Materials:	304 stainless steel track and hangers with nylon coated rollers
System Includes:	<ul style="list-style-type: none"> <li>• Stainless steel track (78" or 96") with two end caps</li> <li>• Hangers with wall brackets</li> <li>• One door bottom guide</li> <li>• Two track stops</li> <li>• Mounting and installation hardware</li> </ul>
Standards:	Meets performance requirements of ANSI/BHMA 156.14 (Grade 1) for sliding doors by exceeding 100,000 cycles



##### DOOR SPECIFICATIONS

- Door weight up to 250 lbs.
- Wood doors 1-3/4" thick (top-mount hangers)
- Door bottom 3/8" undercut



### 9436 PACKAGED SETS

#### Face Mount Stick 2m SS Round Rail

##### FEATURES

Materials:	304 stainless steel track and hangers with nylon coated rollers
System Includes:	<ul style="list-style-type: none"> <li>• Stainless steel track (78" or 96") with two end caps - available in round or flat rail</li> <li>• Hangers with wall brackets</li> <li>• One door bottom guide</li> <li>• Two track stops</li> <li>• Mounting and installation hardware</li> </ul>
Standards:	Meets performance requirements of ANSI/BHMA 156.14 (Grade 1) for sliding doors by exceeding 100,000 cycles



##### DOOR SPECIFICATIONS

- Door weight up to 250 lbs.
- Wood doors 1-1/4" - 1-3/4" thick
- Door bottom 3/8" undercut
- Glass doors 3/8" to 1/2" thick



### OPTIONAL: 1-269-8650 Spring-Loaded Cushion Stop

Details:	<ul style="list-style-type: none"> <li>• Description: Spring loaded cushion stop</li> <li>• Finish/material: 32D</li> <li>• Door thickness: Up to 1-3/4" wood door</li> <li>• Gently absorbs the hanger and cushions the landing of the door</li> </ul>
----------	---------------------------------------------------------------------------------------------------------------------------------------------------------------------------------------------------------------------------------------------------------



## Barn Door Hardware - e-Conestoga Series

Hager Companies' eConestoga flat track sliding door hardware is a decorative sliding door system with a rustic look and feel. Ideal for multi-family units, hotels, and office spaces, Hager's eConestoga flat track sliding door hardware system is available with two styles of door hangers to complement the décor

### FEATURES

- Durable powder-coated black steel
- Meets performance requirements of ANSI/BHMA 156.14
- (Grade 1) for sliding doors by exceeding 100,000 cycles

### SPECIFICATIONS

- Door weight up to 250 lbs
- Wood doors 1-3/4" thick

Hager Part Number	Description
<b>72" Kits</b>	
<b>Top Mount</b>	
9456-72	
<b>Face Mount</b>	
9436-78	
<b>96" Kits</b>	
<b>Top Mount</b>	
9457-72	
<b>Face Mount</b>	
9457-96	
<b>Accessories</b>	
9456-72	Flat Rail Steel Black Top Mount 72" Track Kit Includes Track
9456-96	Flat Rail Steel Black Top Mount 96" Track Kit Includes Track
9457-72	9457-72 Flat Rail Steel Black 3" Hook 72" Track Kit Includes Track
9457-96	9457-72 Flat Rail Steel Black 3" Hook 72" Track Kit Includes Track
1-269-8649	Flat Rail Track Connector
1-269-8648	72" Rail Only
1-269-8647	Door Stop
1-269-8646	Flat Rail Soft Close Add On
1-269-8652	9456 e-Conestoga - Top Mount Hanger Parts Bag
1-269-8653	e-Conestoga Left and Right End Stop
1-269-8654	e-Conestoga Track Support
1-269-8655	e-Conestoga Floor Guide (One Piece)
1-269-8656	e-Conestoga Anti-Jump Pin
1-269-8657	e-Conestoga Floor Guide (Two Piece)
1-269-8658	e-Conestoga 72" Track
1-269-8659	9457 e-Conestoga - Face Mount Hanger
1-269-8660	e-Conestoga 96" Track

## Barn Door Hardware - e-Conestoga Series

### Durable Black Powder-Coated Rail

#### FEATURES

Materials: Durable powder-coated black steel

Available in:

- 72" and 96" track lengths
- 1-269-8648 - 72"
- 1-269-8647 - 96"



### 9456 Top Mount Track Kit

#### FEATURES

Materials:

- Durable powder-coated black steel
- Black steel rail (72" or 96")

System Includes:

- Two carriers
- Two stops
- Floor guide
- Rail mounting brackets and fasteners

Standards:

- Meets performance requirements of ANSI/BHMA 156.14 (Grade 1) for sliding doors by exceeding 100,000 cycles



#### DOOR SPECIFICATIONS

- Door weight up to 250 lbs.
- Wood doors up to 1-3/4" thick

### 9457 Face Mount Kit

#### FEATURES

Materials:

- Durable powder-coated black steel
- Black steel rail (72" or 96")

System Includes:

- Two carriers
- Two stops
- Floor guide
- Rail mounting brackets and fasteners

Standards:

- Meets performance requirements of ANSI/BHMA 156.14 (Grade 1) for sliding doors by exceeding 100,000 cycles



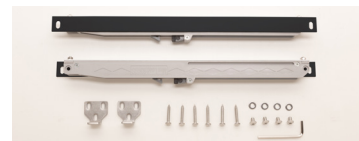
#### DOOR SPECIFICATIONS

- Door weight up to 250 lbs.
- Wood doors up to 1-3/4" thick

### OPTIONAL: 1-269-8646 Flat Rail Soft Close Mechanism

Details:

- Gently guides door to open or closed position
- Door weight up to 176 lbs.



## Optional Components



### 330D

#### Pocket Door Latch

Certification: Meets ANSI A156.14 for D0821.1

Size: 2-3/4" x 2-1/2"  
(70 mm x 64 mm)

Finger Piece: 1-3/8" (35 mm)  
extension

Materials: Brass

Finishes: US3, US5, US10B,  
US15, US15A, US19,  
US26, US26D

Fasteners: Two (2) #6 x 5/8"  
OPHWS; (2) #6 x 3/4"  
FPHWS

Notes: For use with 1-3/8" to  
1-3/4" (35 mm to  
45 mm) door



### 330L

#### Pocket Door Privacy Latch

Size: 2-3/4" x 2-1/2"  
(70 mm x 64 mm)

Finger Piece: 1-3/8" (35 mm)  
extension

Strike Size: 1" x 2-1/4" (25 mm x  
57 mm)

Materials: Brass

Finishes: US3, US5, US10B,  
US15, US15A, US19,  
US26, US26D

Fasteners: Two (2) #6 x 5/8"  
OPHWS; (2) #6 x 3/4"  
FPHWS

Notes: For use with 1-3/8" door



### 330M

#### Pocket Door Privacy Latch

Certifications: Meets ANSI A156.14 for D0831

Size: 2-3/4" x 2-1/2"  
(70 mm x 64 mm)

Finger Piece: 1-3/8" (35 mm)  
extension

Strike Size: 1" x 2-1/4" (25 mm x  
57 mm)

Materials: Brass

Finishes: US3, US5, US10B,  
US15, US15A, US19,  
US26, US26D

Fasteners: Two (2) #6 x 5/8"  
OPHWS; (2) #6 x 3/4"  
FPHWS

Notes: For use with 1-3/4" door



### 1741

#### Full Mortise, Five Knuckle, Plain Bearing Hinge

- Steel with steel pin (ANSI A5134)
- Reversible
- Square corners
- Removable pin
- 3.5" x 3.5"
- US2D



### 2610

#### Flush Cup Finger Pull

Overall Diameter: 31/32" (25 mm)

Finger Pull Diameter: 3/4" (19 mm)

Depth: 5/16" (8 mm)

Projection: 1/32" (.8 mm)

Materials: Solid brass

Finishes: US3, US4, US5,  
US10A, US15,  
US15A, US26,  
US26D, ABA

Notes: Built-in prong  
design eliminates  
the need for  
screws or brads



### 2630

#### Flush Cup Pull

Overall Diameter: 2-7/16" (62 mm)

Finger Pull: 2-1/16" (52 mm)  
diameter

Depth: 11/32" (9 mm)

Projection: 3/32" (2 mm)

Materials: Solid brass

Finishes: US3, US4, US5, US10A,  
US15, US15A, US26,  
US26D, ABA

Notes: Built-in prong design  
eliminates the need for  
screws or brads.

## Optional Components



### 9558

#### Wood Knob

Diameter: 1-1/2" (38 mm)  
Materials: Solid wood



### 3835

#### Small Case Deadlock

Thumbturn: Meet ADA Requirements, "No pinch," No grasp."  
Lock Case: Heavy wrought steel with zinc dichromate finish - 4-5/16" x 3-9/16" x 1" (110 mm x 90 mm x 25 mm)  
Armor Front: 1-1/4" x 5-5/8" x 7/32" (32 mm x 143 mm x 5 mm)  
Keys: Two operating keys supplied per lock  
Cylinder: 

- Brass - keyed different - C keyway - Standard
- Other keying options, including keyed 6-pin, available from factory
- SFIC uncombined or combined, brass 6- or 7-pin sold separately
- Drilled 6-pin, keyed 5-pin - Standard
- Small Format Interchangeable Core housing available
- Schlage "L" cam - Standard

  
Door Thickness: 

- 1-3/8" - 2-1/2" (35 mm-64 mm) - steel door
- 1-3/4" - 2-1/2" (45 mm-64 mm)- wood door
- Must specify door thickness if greater than 1-3/4" (45 mm)

  
Backset: 2-3/4" (70 mm) only  
Deadbolt: 1" (25 mm) throw - stainless steel  
Strike: 1 1/8" wide x 3 1/2" (29 mm x 89 mm) NO LIP  
Finishes: US26D  
Functions: 35-Cylinder x Thumbturn, 36-Single Cylinder, 37-Double Cylinder, 38-Thumbturn Only, 39-Thumbturn w/ Emergency Key



### 9458

#### Barn Door Privacy Lock

- Non-handed
- ADA Compliant thumb turn for commercial applications
- 2-1/4" or 3-1/2" backset options (see specifications for corresponding wall thickness)
- Drive in bolt casing diameter: 1" (25mm)
- Lock bolt: 1/2" (13mm) diameter, stainless Steel material
- Lock bolt has 1" projection allowing up to 1/2" door to wall gap
- Extra spacer ring accommodates up to 3/4" gap between barn door and wall
- 1-1/4" diameter spring-loaded dust proof strike provides ample space to receive 1/2" bolt, allows easy locking from privacy side. Strike mounted in barn door for standard door
- Available in 32D, 10B, and Black



### 9459

#### Surface Jamb Barn Door Lock

- ADA 1-9/16" Thumb Lever
- Available in 32D or Black



### 1-159-0003

#### Bumper Stop

- For use with 9303HD Track