

# Parallel Fabrics

**kettal**

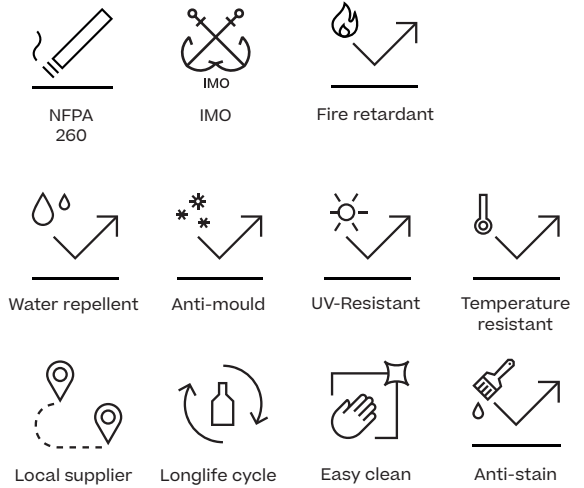
# Parallel Fabrics

## Description

The design originated from a close look at the structure of the fabric. Bearing in mind that this new fabric would be used as screens for pavilions, Doshi Levien created a fabric that would allow light to pass through and give off a pleasing chequered shadow pattern. The same fabric is also applied in cushions for Kettal furniture.

It is ISO 9001 and Greenguard certified.

It is flame retardant and easy to maintain.



## Technical specifications

Composition	73% PVC 27% PES
Frame	REPS-NET
Thickness (mm)	1,05
Weight (g/m <sup>2</sup> )	620 (UNI 9213/3)
Frame density	UNI 1049/2
Warp (fili-yarn/cm)	7,8
Weft (fili-yarn/cm)	6,7
Breaking load	UNI EN ISO 1421
Warp (kg/5cm)	330
Weft (kg/5cm)	290
Breaking elongation	UNI EN ISO 1421
Warp	20%
Weft	17%
Fire retardant	IMO RESOLUTION MSC.307 (88) ANNEX 1 PART 8 – TEST OF UPHOLSTERED FURNITURE · CALIFORNIA TECHNICAL BULLETIN 117-2013; Section 1: Cover Fabric Test · NFPA 260: 2013 · UNE-EN 1021: 2015

## Color Shades



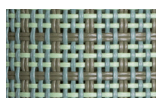
Padina  
564



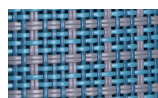
Saline  
571



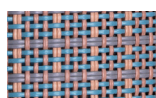
Urchin  
547



Turtle grass  
553



Winter Sea  
569



Xenia  
568



Plumaria  
567

## Certificates

---



## Maintenance & care instructions

---

For normal cleaning, use water and liquid detergents, colorless, and non-abrasive. We recommend leaving the detergent to act for a few minutes and, if necessary, rub the surface with brushes exclusively with soft bristles, therefore rinse thoroughly with warm water.

Clean with pH-neutral soap and water.

Do not use salt water.

Be careful with suntan lotions, as they may cause stains.

Do not use acid solutions or organic solvents.

Do not use pressurised water.

If mould appears, it can be removed by applying steam.

