

Terrain Elements,
by Doshi Levien

kettal

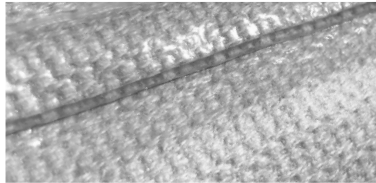
Description

This is a range of premium fabrics for indoor and outdoor furniture.

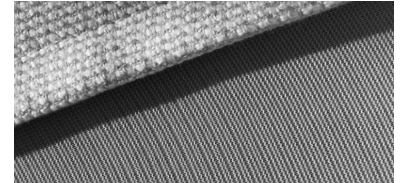
The hydrophobic technology applied works by impeding the liquids that permeate the fabric, forcing them to roll out of the fabric in the form of drops. The fabric protection that brings out the liquids allows for drops of water and oil to be eliminated during normal washing without leaving any traces.

Solution-dyed acrylic; is dyed before thread is created. A liquid acrylic solution is mixed with dye and then formed into a fiber and spun on thread.

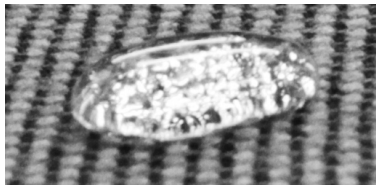
Composed of different 3 shades of unique colors.



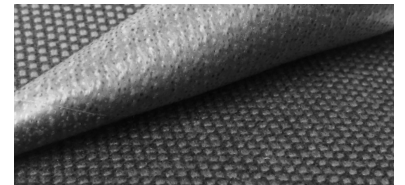
Thermal welding in all stitching applied



Air circulate system



Water repellent



Laminated



Anti-mould



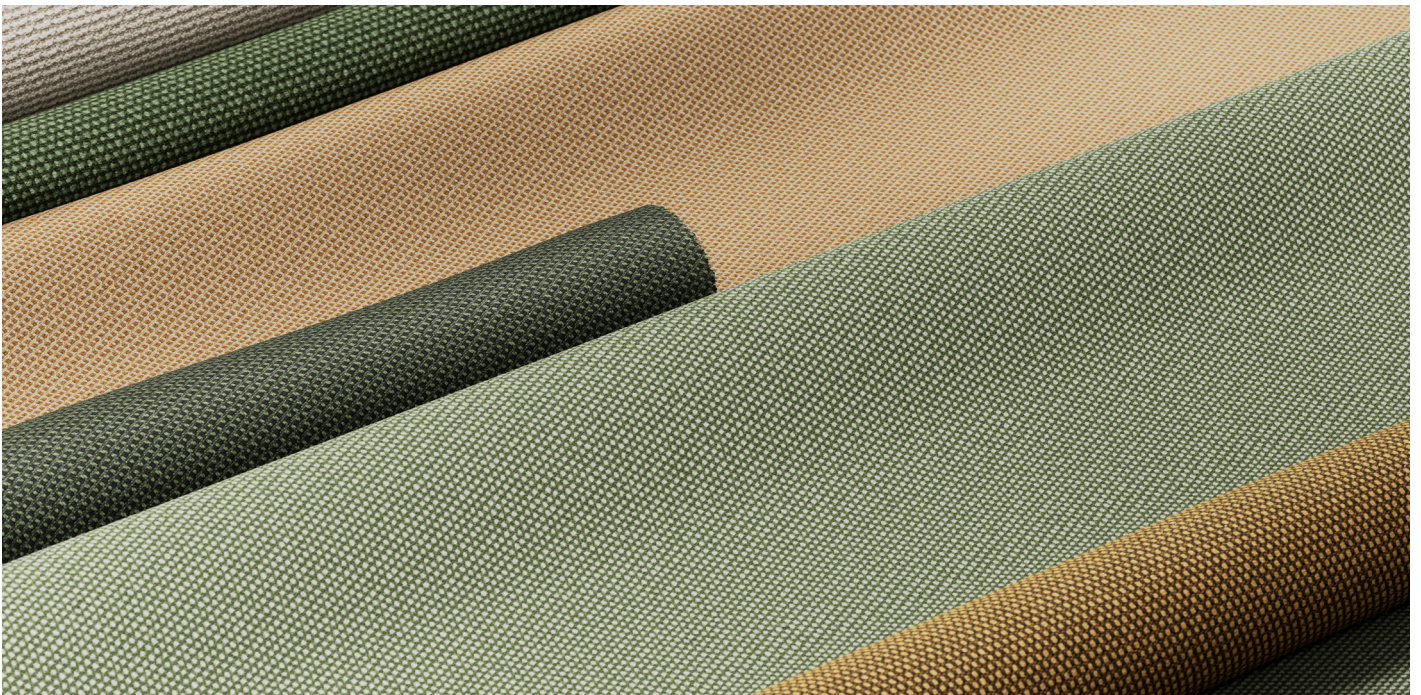
UV-Resistant



NFPA
260

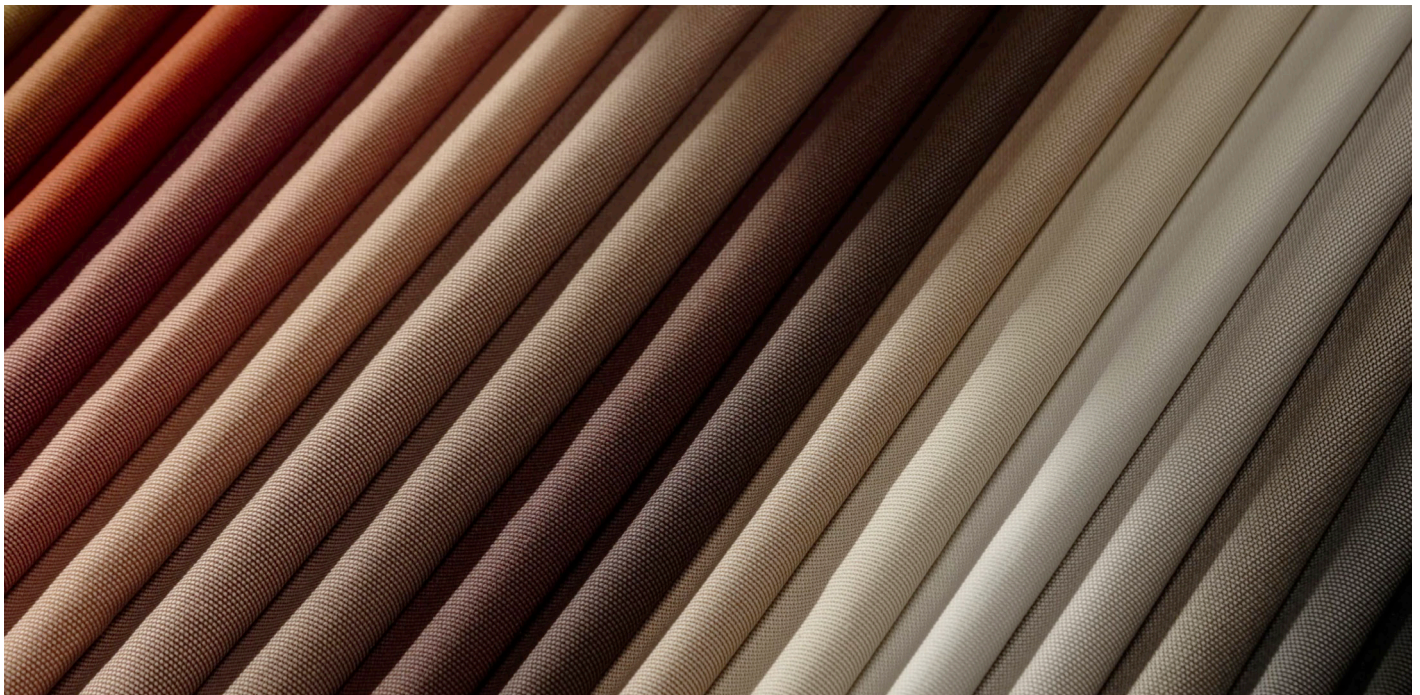


CAL 117

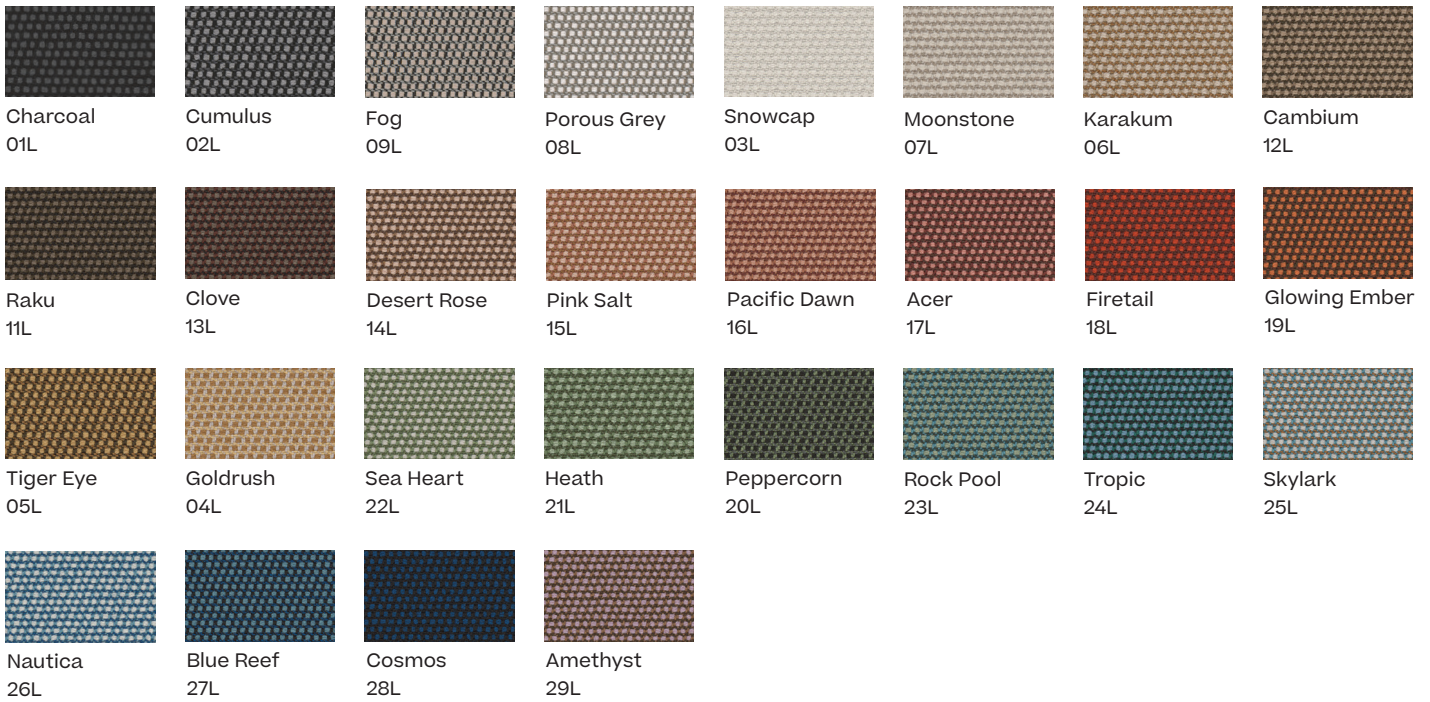


Technical Specifications

Material	100% Dyed Acrylic	
Grammage	400 g/m ²	ISO 2286-2
Resistant to superficial wetting	100	ISO 24920
Oil resistance	6	AATOC 118
Colour fastness to artificial weathering	7-8 blue scale (8)	ISO 105-B04
Colour fastness to light	7-8 blue scale (8)	ISO 105-B02
Title warp and weft	Nm 2/34 Nm 6/34	
Tensile strength, warp	180 daN/5 cm	ISO 13934
Tensile strength, weft	240 daN/5 cm	ISO 13934
Tear resistance, warp	21.0 daN	ISO 4674-1
Tear resistance, weft	29.0 daN	ISO 4674-1
Abrasion resistance (Martindale)	60,000 cycles	ISO 12947-2
Abrasion resistance (Wyzenbeek)	30,000 double rubs	ASTM D4157
Pilling	5	ISO 12945-2
Finish	Fluorocarbon free	
Material resistance to ignition without flame	Pass	EN 1021-1:2014 and EN 1021-2:2014 · CA TB 117 · NFPA 260



Color Shades



Cleaning & Maintenance

Brush the textile from time to time; it can be machine washed at any time according to the instructions.

During the lifetime of the material, we recommend maintaining the exclusive fluorocarbon waterproofing treatment with the exclusive fluorocarbon waterproofing treatment with Kettal fabric ref. 8010-003 according to the instructions.



Learn more about the Terrain Elements cleaning process [right here](#) or scanning the following QR code.

