

Terrain Paints,  
by Doshi Levien

**kettal**

# Terrain Paints

Designer  
Doshi Levien

Finishes

1/3

## Description

Electrostatic powder coating process applied. This paint mixes a specific resin that offers greater hardness compared to the paints used in architecture. Terrain Paints are designed to coat aluminium profiles used in architecture and for other substrates where the maximum resistance to the outdoors is needed. This is a powder coating formulated with polyester resins and free of TGIC, pigments, and additives. These provide excellent exterior durability with very good gloss retention and colour stability.



Polymerization  
at 160 °C

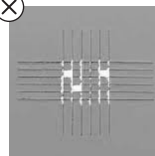
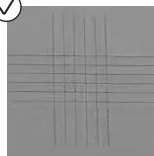


Local supplier



Class A2

## Scratch test



1x1 mm

## Impact test



kettal

# Terrain Paints

Designer  
Doshi Levien

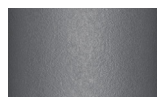
Finishes

2/3

Characteristics	Min.	Max.	Method
Baking time / temperature	24 to 150 °C / 75,2 to 302 °F	26 to 150 °C / 78,8 to 302 °F	Total time
Gloss at 60° angle	6	9	ISO 2813
Direct impact 12.5 mm	30		ISO 2813
Indirect impact 12.5 mm	30		ISO 2813
Cross-cut adhesion	0	0	ISO 2813
Erichsen Cupping test	5	11	ISO 2813
Bend test (Cylindrical Mandrel)		6	ISO 2813
Avg. Particle size	50	55	MALVERN
Particle size % < 100 MICRONS	80	95	MALVERN
Particle size % < 50 MICRONS	50	65	MALVERN
Particle size % < 10 MICRONS	4	8	MALVERN
Delta E colour		VISUAL	CIELAB
General appearance	Textured		NIZI-001



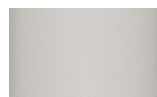
Slate Stone  
01C



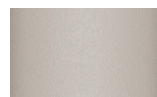
Mysty Smoke  
02C



Ash  
03C



Bone  
04C



Tuff  
05C



Wet Stone  
06C



Sand Dune  
07C



Dry Clay  
08C



Arabica  
09C



Sepia  
19C



Rose Canyon  
16C



Blossom  
20C



Ruby Dust  
18C



Sunset Glow  
17C



Terrarosa  
15C



Terracota  
14C



Amber  
13C



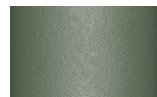
Ginger Root  
12C



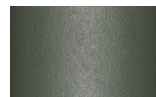
Desert Storm  
11C



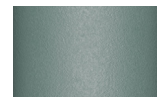
African  
Savannah 10C



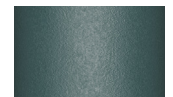
Spring Meadow  
28C



Kombu  
29C



Forest Stream  
27C



Sea Moss  
26C



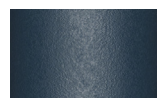
Glacier Ice  
25C



Polar Sky  
24C



Nightfall  
23C



Indigo  
22C



Wild Lupin  
21C



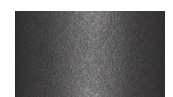
Galena  
33C



Bronze  
30C



Corten  
31C



Manganese  
32C

kettal

## Certificates



## Note

We recommend following the advice given by the standards AAMA 609 and 610-02 or in the guidelines from Qualicoat.

## Recommendations

1. Wash the surface periodically with warm water and soap, or a pH-neutral detergent.
2. Use a non-abrasive sponge or cloth.
3. Rinse immediately with a large amount of water after cleaning.
4. Cleaning should preferably be carried out in the shade and avoid extremely hot or cold temperatures.  
For cleaning grease, oils, cutting oils, adhesives, etc. we recommend using isopropyl alcohol in combination with turpentine, using a soft cloth. We recommend carrying out a test in an inconspicuous area to verify that the use of unknown mixtures does not affect the surface.

## Maintenance

Situation	Min periodic cleaning
Tropical	9 months
Swimming pools & gymnasiums	6 months
Coastal	3 months
Industrial	3 months
Hazardous	1 month
Normal	12 months

Clean with non-corrosive, non-abrasive products. Do not use scouring pads and pressure washers should not be used.

Depending on temperature and concentration, various highly acidic or alkaline materials can damage or attack the surface after only a few minutes.

Depending on temperature and concentration, various highly acidic or alkaline materials can damage or attack the surface after only a few minutes of contact. It is extremely important to take measures to avoid this.

### Preventative care

Protect surfaces with barrier elements like film, paper, and peelable lacquers before placement and handling.

### Immediate cleaning

If accidental contamination or splashing of strong alkalis or acids occurs, wash the affected area with a large amount of clean water, especially cut-outs or holes and cavities.

### Periodic maintenance

The accumulation of dirt or contamination on the profiles may increase the risk of corrosion, a loss of sheen, or a change of colour, especially in areas located near the coast and industrial environments.

### Do not use

Abrasive materials or tools or anything that could cause scratches. Acidic or alkaline substances that could cause corrosion. Strong solvents, including petrol, diesel, and kerosene. Grease cleaners, pesticides, or lubricants whose composition is unknown. Detergents, oven cleaners, or other similar agents. Cleaning agents when the surface temperature is greater than 25°C. Dry cleaning a dirty surface of dust or building materials.

Avoid submersing a powder coated product in water for long periods of time. Chlorine might cause damage.