

CARTOTECNICA  
MODERNA

# *Relationship Charter*





Cartotecnica Moderna is committed to promoting an ethical and sustainable supply chain. We invite our supplier partners to join us in this commitment, contributing towards the construction of a value chain that respects the environment, people and the market.  
**For a more responsible and prosperous future.**

Cartotecnica Moderna is committed to promoting and consolidating a company culture grounded in the values of listening, care, reciprocity and trust. These principles guide our actions and define the way in which we operate in the World.

Our Charter of Values is the compass that orientates us with every step we take, encouraging concrete and tangible gestures of responsibility, sustainability and integrity. These values underpin the relationships we form with our supplier partners, with whom we wish to build a relationship based on mutual trust and a shared vision of the future.

With the Relationship Charter we reiterate our commitment to operating ethically and sustainably, recognising the importance of each supply chain actor's contribution towards the creation of a fair and respectful production system. We request our partners to adopt

practices that go beyond mandatory compliance, to embrace a proactive approach in the management of resources and safeguarding of human and environmental rights.

**Together we can build a sound, responsible value chain, oriented towards sustainable growth.**

## *Monitoring and Verification*

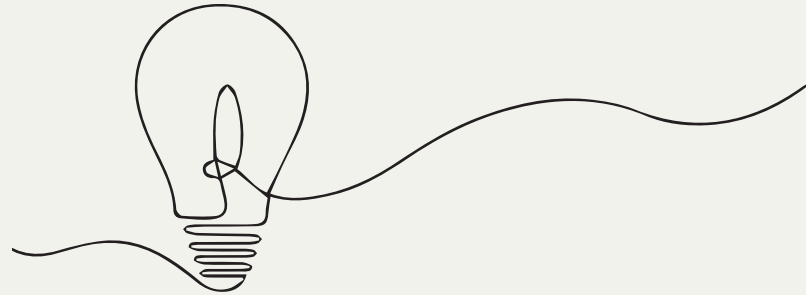
In order to ensure compliance with standards set forth in the Relationship Charter, Cartotecnica Moderna reserves the right to periodically monitor the behaviour of its partners.

This verification process reinforces trust and promotes a culture of responsibility. We require suppliers to be ready to provide necessary information and documentation as confirmation of compliance with established standards. This transparent and cooperative approach contributes towards a sound supply chain that can withstand global market challenges.

# *Legal Compliance*

Compliance with applicable legislation and regulations is an essential principle for Cartotecnica Moderna. All partners must comply with occupational safety, environmental protection and fiscal transparency legislation in the countries they operate in. Compliance is more than just a formal fulfilment, it is a veritable commitment to operating correctly and legally, reinforcing the entire supply chain's credibility and sustainability.

Cartotecnica Moderna expects suppliers to behave impeccably to this effect, consolidating a reliable value chain that complies with legislation.



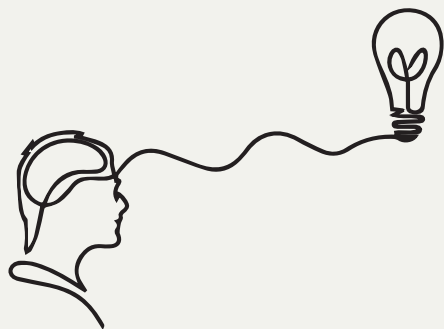
## *Transparency*

Transparency is a cornerstone of Cartotecnica Moderna's relationships with supplier partners. We expect each of our partners to uphold open and truthful communication, providing precise details on the provenance of materials, production processes and costs. This transparency helps build an environment of trust, which is crucial for long-term cooperation. In a context of reciprocity, we encourage our suppliers to openly share their values and ethical principles, so as to ensure that each link in the supply chains is aligned with the company's quality and integrity standards. Transparency is not an obligation, rather it is a practice that favours supply chain cohesion and effectiveness.

## *Long-term Partnership*

Cartotecnica Moderna firmly believes in building partnerships grounded in mutual trust and shared objectives. Long-term cooperation is seen as an essential element of collective success, calling for continuous dialogue and the authentic sharing of ethical values. We solicit our partners to actively participate in open and cooperative conversations, with the aim of improving overall results in the supply chain and tackling common challenges, together. In this way, Cartotecnica Moderna and its partners can grow, not just economically, but also in terms of reputation and impact.

together to develop new solutions, improve products and optimise processes. These projects may include the adoption of new technologies, the piloting of sustainable materials, or the creation of more efficient logistics solutions. Cooperative innovation reinforces our bond and contributes to mutual progress.



## *Open communication and constructive feedback*

Open communication and a constructive feedback system are essential in the success of a long- lasting and fruitful cooperation.

Cartotecnica Moderna recognises that clear and transparent communication improves mutual understanding and reinforces trust between parties. This is why the company encourages its supplier partners to engage in continuous and proactive dialogue, in which ideas, observations and suggestions are shared without reservations with the aim of growing, together.

The approach to open communication includes moments of discussion, which favour the prompt resolution of any problems and are an

opportunity to identify areas of improvement and innovation.

Cartotecnica Moderna believes that constructive feedback must always be received with respect and used as a tool to improve performance, optimise processes and consolidate professional relationships.



## *Quality and Cooperative Innovation*

Quality is non-negotiable at Cartotecnica Moderna. Supplier partners must guarantee that provided products and services comply with the highest standards, ensuring efficiency and safety in production processes. However, quality is not enough without a constant striving for innovation. We encourage our partners to proactively research new solutions to improve both products and processes, thus promoting a virtuous cycle of value creation. Innovation is seen as the key to competitive growth and differentiation on the market. We expect suppliers to adopt a dynamic and creative approach in response to challenges of the industry.

We encourage our partners to participate in cooperative innovation projects, working



# *Work Ethics and Human Rights*

Respect for human rights and ethical practices is absolutely crucial for Cartotecnica Moderna. We recognise the importance of ensuring safe work conditions, which are fair and respectful of human dignity. We require our suppliers to comply with standards established by major international agreements, like the International Labour Organisation (ILO) conventions and the United Nations Guiding Principles on Business and Human Rights. It is fundamental that each supplier rigorously complies with the ban on forced, minor and discriminatory labour, in all production phases. This ethical commitment is a distinctive sign of our supply chain and contributes towards consolidating a commercial environment inspired by shared values and mutual respect.

# *Sustainability*

Sustainability is an integral part of the Cartotecnica Moderna vision and inspires every aspect of its operation. We request our suppliers to actively commit to reducing the environmental impact of their activities, by adopting ecological practices throughout the entire supply chain.

This includes the use of renewable raw materials, waste reduction and the continuous improvement of processes and technologies, for greater efficiency in the consumption of natural resources.

Cartotecnica Moderna considers sustainability as an opportunity for innovation and value creation, stimulating partners to integrate green solutions that contribute towards a responsible and resilient supply chain. In addition to environmental aspects,

sustainability also permeates the social dimension, which Cartotecnica Moderna sees as fundamental for balanced and responsible growth. We invite our supplier partners to promote practices that support the well-being of local communities.

This includes safe and dignified work conditions, the promotion of diversity and inclusion, and the adoption of policies that prevent all forms of discrimination or exploitation.

Social sustainability also implies investment in training and the development of employee skills, reinforcing a positive and cooperative work environment.

Cartotecnica Moderna is committed to creating a value chain that protects the environment, while also being fair and respectful of people. We believe that a holistic approach to sustainability is the only way to build sound relationships and a prosperous future for

everyone, based on shared responsibility and positive impact.

