

# Public consultation on plans for a new data centre campus

Share your views from  
12 November to 17 December 2025

SDC Capital Partners is bringing forward plans for a new data centre campus on land between the M40 and A40 near Beaconsfield and Gerrards Cross.

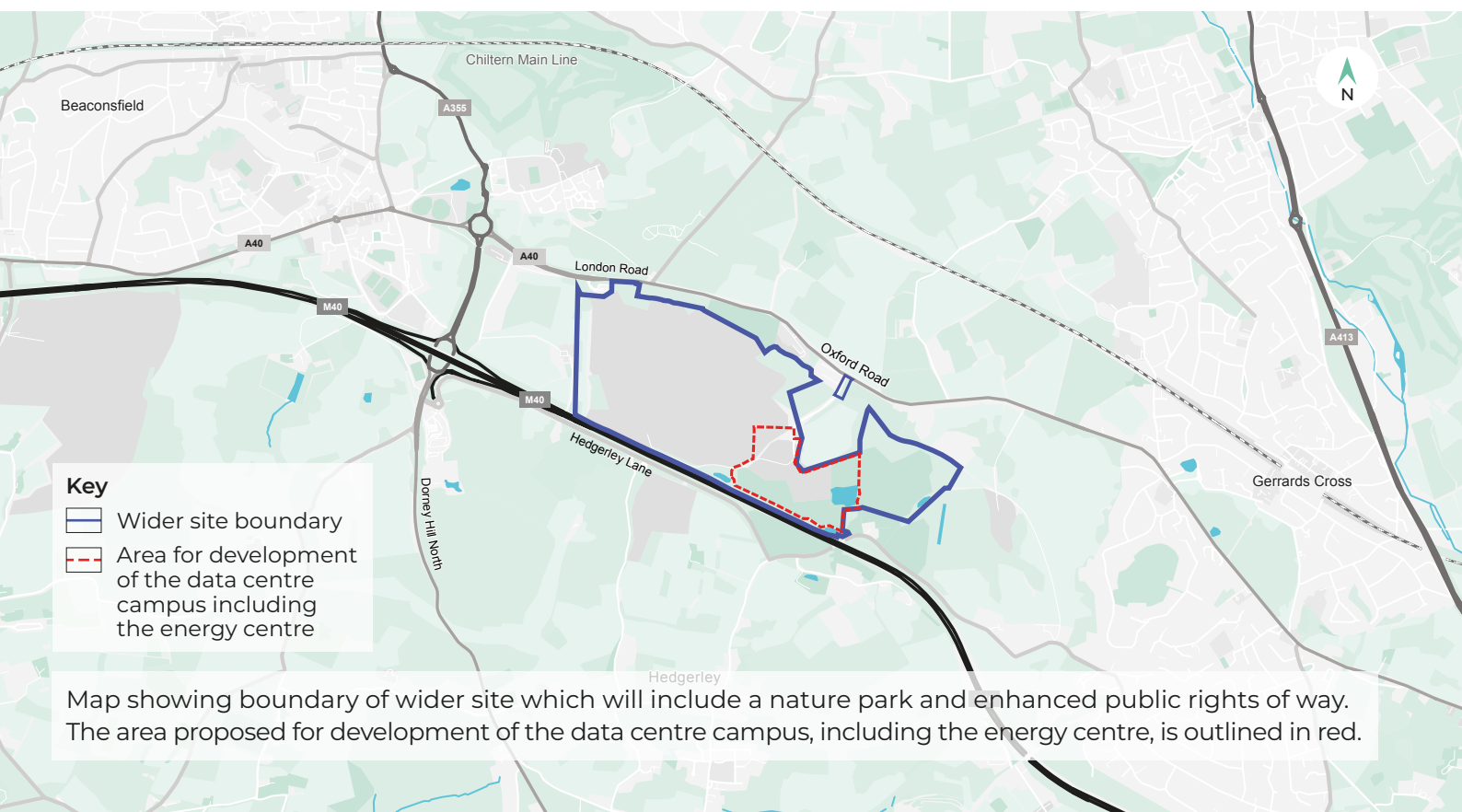
The project comprises a data centre and an on-site energy centre which will help to address the UK's data centre shortage.

Plans will also include extensive landscaping, with new green spaces for the local community and enhanced public rights of way.

SDC Capital Partners is a US-based investment firm specialising in the development of data centres, with years of knowledge and experience in the sector. It has a proven track record in developing and operating data centres.

We are inviting you to take part in a public consultation on the emerging proposals.

**Consultation is open from:**  
**12 November to 17 December 2025**



Map showing boundary of wider site which will include a nature park and enhanced public rights of way. The area proposed for development of the data centre campus, including the energy centre, is outlined in red.

# Find out more at any of our events

Join us at any of the in-person or online events we're holding to meet the project team, find out more about our draft proposals, and provide your feedback.

Date	Time	Venue
<b>Friday 21 November</b>	4pm – 8pm	Fitzwilliams Centre, Windsor End, Beaconsfield HP9 2JW
<b>Saturday 22 November</b>	11am – 4pm	Hedgerley Memorial Hall, Kiln Lane, Hedgerley SL2 3UU
<b>Saturday 29 November</b>	10am – 4pm	Gerrards Cross Community Association, 8 East Common, Gerrards Cross SL9 7AD
<b>Monday 1 December</b>	6pm – 7pm	Online event – register to attend via our website: <a href="http://www.sdcM40campus.co.uk">www.sdcM40campus.co.uk</a>

All venues have suitable disabled access routes as well as car parking spaces. All consultation information is available on our website.

Please visit [www.sdcM40campus.co.uk](http://www.sdcM40campus.co.uk) for further information.



## Tell us what you think

We will consider all feedback on the draft proposals submitted throughout consultation.

A further stage of consultation on our detailed proposals will be carried out before we finalise the plans and submit our application in 2026.

### For more information

If you have any questions about the proposals or would like to speak to a member of our team, please contact us:



[www.sdcM40campus.co.uk](http://www.sdcM40campus.co.uk)



0800 156 0709



[info@sdcm40campus.co.uk](mailto:info@sdcm40campus.co.uk)



**Freepost SDCM40 CAMPUS**

SDCM40 CAMPUS must appear uppercase and with no space between SDC and M40



Aerial image of part of current site proposed for development