

Hope Moor Wind Farm Liaison Group

03 03 2026 | 6:30-8:30pm

Meeting 1

Barningham Village Hall

Summary	
Project Team Attendees	Parishes with representatives in attendance
Kelly Wyness Frances Cunningham Barbara Campbell Andy Gregory Natasha Kendall (Chairperson) Connie Borthwick	Arkengarthdale Parish Council Barningham Parish Meeting Bowes Parish Council Dalton Parish Meeting Gayles Parish Meeting Marrick Parish Council Marske and New Forest Parish Council Newsham Parish Council Reeth, Fremington and Healaugh Parish Council Rokeby, Brignall & Egglestone Abbey Parish Council Wycliffe with Thorpe Parish Council
Agenda	
<p>Meeting aim: To introduce Fred. Olsen Renewables Ltd (FORL) and the Hope Moor project to parishes and introduce parish councillors to the project team.</p> <ul style="list-style-type: none"> • Welcome from Frances Cunningham, Project Manager for Hope Moor • Introductions to Hope Moor Wind Farm project team • Housekeeping • Presentation: Introduction to FORL, early thinking and intentions for Hope Moor. • NSIP process overview • Consultation and scoping overview • Q&A 	

- Discussion on ideas and suggestions for future Liaison Group meetings

Action items

- Minutes and slides to be issued following the meeting.
- Provide a map/list of the parishes invited to be part of the CLG (the "14") and check any missing contacts.
- Draft a Terms of Reference for the forum (requested), for agreement at the next meeting.
- Consider allowing two representatives per parish to attend future meetings (requested; received positively).
- Consider allowing campaign/action group attendance at the CLG meetings (parked).
- Use consultation publicity that does not rely on digital-only, and clearly provides paper/postal options.
- Review timings of consultation period and events in light of lambing season and other local constraints.

Discussion notes

Item number	Discussion notes	Action items
1	<p>Purpose of meeting</p> <ul style="list-style-type: none"> • Introduce the Hope Moor project team to local representatives. • Establish these meetings as a regular forum for dialogue between local parishes and the Hope Moor project team. • To provide early information on the project and explain the NSIP process. • To gather early issues and discuss how the project's consultation and engagement will run. 	No Action

<p>2</p>	<p>Introductions and housekeeping</p> <ul style="list-style-type: none"> • Overview of meeting format (introductions, project intro, explainer on NSIP process, consultation and EIA scoping, Q&A). • Chair asked that questions be taken via raised hands; “parked” items can be revisited at a future meeting. • The team will share minutes after the meeting and provide slides alongside them. 	<ul style="list-style-type: none"> • Hope Moor project team will share minutes and slides with agendas. • As transparency with the local community came up a lot in the CLG meeting, we think it would also be appropriate to publish these minutes on the Hope Moor project website.
<p>3</p>	<p>Introduction to Fred. Olsen Renewables (FORL)</p> <ul style="list-style-type: none"> • Overview of FORL’s experience as developers of renewable energy projects, including that they were the second consented, first built wind farm in Scotland • Explanation on how FORL have historically developed successful sites grounded in community investment 	
<p>4</p>	<p>Project overview</p> <ul style="list-style-type: none"> • Hope Moor Wind Farm was described as an onshore wind proposal of approximately 100 MW, with turbines discussed up to around 200 m tip height. • Rationale for Hope Moor framed around UK energy security and climate goals, and FORL’s commitment to design to be sensitive to the environment and landscape • It was explained that Hope Moor is one of the best sites in the UK for a wind farm, due to its wind index. • Fred. Olsen Renewables outlined their UK renewables track record and approach emphasising collaboration and local benefits. • It was explained that the industry has moved on in the time that onshore wind was effectively banned in the UK, with developers favouring fewer, more efficient turbines 	

<p>5</p>	<p>Community benefit Fund</p> <ul style="list-style-type: none"> • Fred. Olsen described the index linked community benefit contribution of £5,000 per MW per year. • For 100 MW this equates to £500,000 per year, for the operational lifetime (noted as roughly ~30 years in discussion). • Clarified that the calculation relates to installed capacity, not energy generated. • The fund is framed as community-led in terms of how it is distributed and used (examples given included local projects, skills/training, facilities, heritage, local energy/efficiency initiatives, etc.). • It was also clarified later that the community benefit fund is separate from Section 106-style planning obligations. 	
<p>6</p>	<p>NSIP consenting route and process overview</p> <p>Why a DCO?</p> <ul style="list-style-type: none"> • Because the project is expected to exceed 100 MW, it qualifies as a Nationally Significant Infrastructure Project (NSIP) requiring a Development Consent Order (DCO). <p>Stages explained (high level)</p> <ul style="list-style-type: none"> • Pre-application (current): early surveys, iterative design, two stages of consultation; described as the most detailed/longest stage. <ul style="list-style-type: none"> ○ Scoping: scoping report submitted to Planning Inspectorate; statutory bodies consulted; Planning Inspectorate issues a scoping opinion (the “rule book” for the EIA). ○ Environmental Statement – following design freeze an Environmental Statement will be produced, in accordance with the Scoping Report and ongoing consultation, as part of the Environmental Impact Assessment (EIA) that formally identifies, predicts and evaluates the likely significant 	<p>For more information on the NSIP process please see PINs’ explanation here.</p>

	<p>environmental effects of the project. The document will also outline the necessary mitigation and enhancement measures to avoid, offset or reduce negative effects</p> <ul style="list-style-type: none"> • Acceptance: ~30 days for The Planning Inspectorate (PINS) to check that the application is adequate and aligned with expectations • Pre-examination: variable duration (no fixed statutory timeline). This is when the Examining Authority is appointed • Examination: fixed 6 months (written questions and open floor hearings). • Recommendation: fixed 3 months period where the Examining Authority writes its recommendation report. • Secretary of State decision: fixed 3 months to make a decision. 	
7	<p>Consultation approach</p> <p>Two main rounds of public consultation were described:</p> <ul style="list-style-type: none"> • Stage 1 consultation currently planned for spring (April/May indicated) – early proposals, multiple engagement routes, c.6-week period. • Stage 2 consultation later in the year – more refined proposals shaped by surveys and Stage 1 feedback. <p>Engagement routes to include: in-person events, website materials, email, and postal/hard-copy options.</p> <p>Accessibility point raised strongly: do not assume IT literacy; ensure paper materials and non-digital routes are clear and available.</p> <p>The difference between PINs’ consultation on the scoping report to inform their scoping opinion, and FORL’s community consultation was highlighted.</p> <p>Emphasised that consultation is the key opportunity for people to provide feedback on our proposals at both stages of consultation. This feedback will be collated into a</p>	

	consultation report' in which FORL will explain how they have considered feedback.	
8	Q&A – key themes and responses	
a	<p>Scope, consultation reform and “can issues be added later?”</p> <p>A parish representative asked about recent legislative reforms and whether issues can be reintroduced if not included at scoping.</p> <p>Response</p> <ul style="list-style-type: none"> • Guidance on reforms following the Planning and Infrastructure Act 2025 is still evolving. Regardless of this, we will continue to consult as per previous statutory requirements, which include two formal stages of community consultation. In addition to meeting these statutory stages, our intention is to go beyond the minimum requirements. • We will also keep communities informed throughout the process. We will work with the CLG to agree the best ways to achieve this, such as through regular updates, webinars, and other engagement methods. • The Planning Inspectorate can request additional things be added to the scope – they rarely remove things from the scoping report. Non-compliance with scoping opinion can affect acceptance. 	
b	<p>Turbine blade wear / potential contaminants</p> <p>A parish representative asked whether blade wear and potential “forever chemicals”/particulate dispersal would be considered.</p> <p>Response</p> <ul style="list-style-type: none"> • Not recognised as a standard EIA topic for onshore wind in the team’s experience; described as out of scope at this stage. 	

<p>c</p>	<p>Water environment, catchments, monitoring and flood risk</p> <p>Several questions focused on watercourses and flooding (including reference to significant flooding in 2019).</p> <p>Response</p> <ul style="list-style-type: none"> • It was confirmed that methodologies to assess impacts on watercourses and private water supplies would be included in the scoping report. This hydrology scope is set by catchments, not just the project boundary, with a sensible downstream limit where effects become negligible. • A flood risk assessment will be a core part of the application. • Drainage and runoff management will follow SuDS principles to mimic greenfield runoff. • Baseline monitoring and construction-phase monitoring were described as a common approach (e.g., monitoring locations agreed and undertaken pre-construction and repeated during construction to identify any changes). • It was also confirmed that an Outline Code of Construction Practice document will be submitted, and the principles of the project will need to follow during construction. 	
<p>d</p>	<p>Peat and land management</p> <p>The management and sensitivity to peat on the moor was raised in connection with hydrology/flooding and environmental sensitivity. This was raised in relation to the turbines but also related infrastructure.</p> <p>Response</p> <ul style="list-style-type: none"> • Peat depth and condition survey work has begun/been undertaken to identify deeper peat and seek to avoid those areas. Further surveys will be undertaken to inform infrastructure design • Access tracks would be designed to avoid deeper areas of peat where possible. As a result, excavations would remain relatively shallow, with the intention of 	

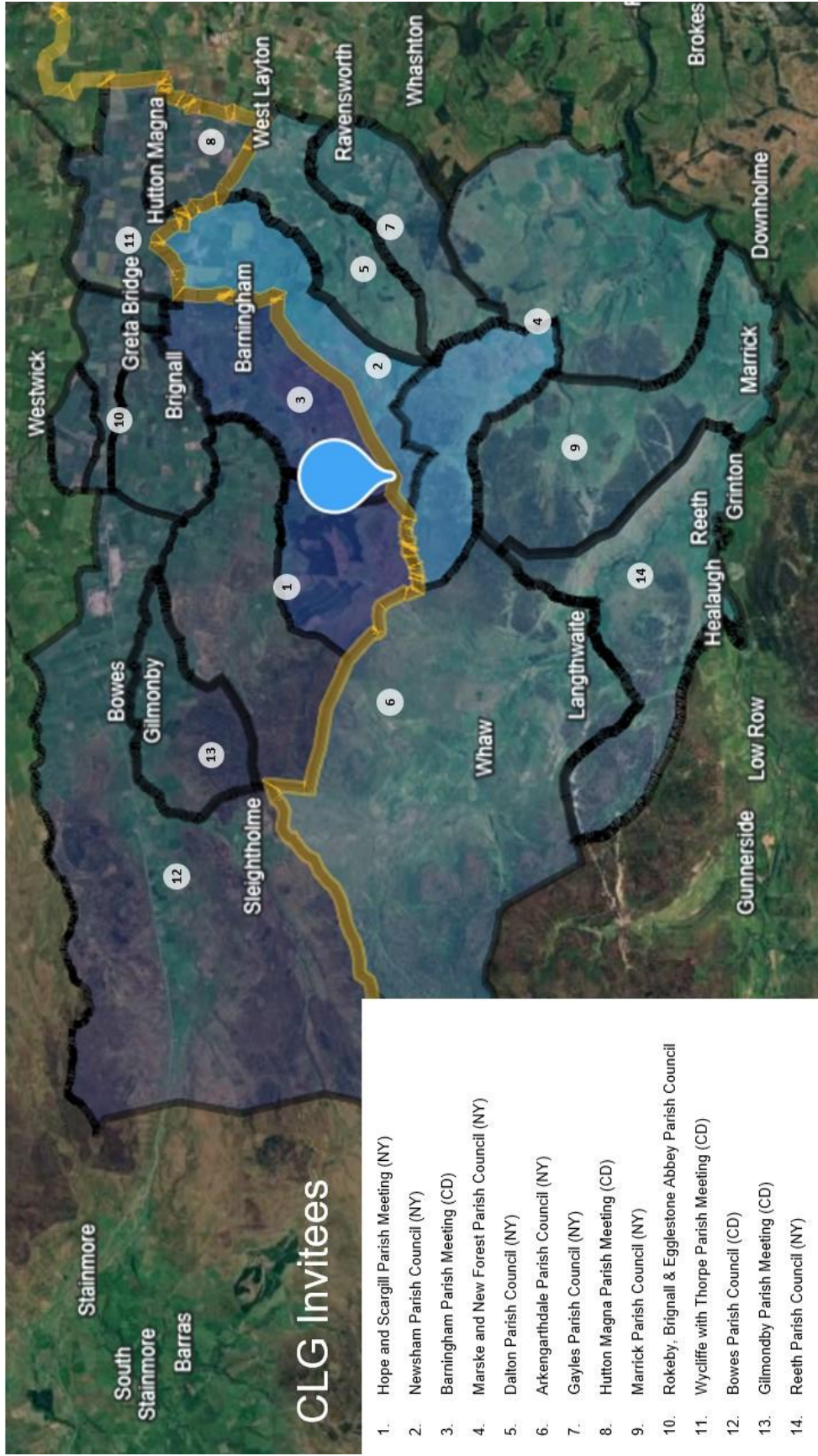
	<p>minimising disturbance. Where excavation is required to reach load-bearing strata, any displaced material would be reused in verge landscaping.</p> <ul style="list-style-type: none"> • Potential for peat restoration/rewetting measures to deliver environmental betterment (not positioned as a flood defence scheme, but potentially beneficial). 	
e	<p>Document visibility and management</p> <p>It was asked whether all project documents and assessments (such as the EIA) will be available to the public.</p> <p>Response</p> <ul style="list-style-type: none"> • It was confirmed that all documentation and assessments will be made available to the public. The only condition here is that we are legally required to redact some information, for example red listed bird species and other protected species. 	
f	<p>Landscape and visual effects</p> <p>Requests were made for visibility mapping.</p> <p>Response</p> <p>It was explained that visibility assessments and zones of theoretical visibility will be submitted as part of the EIA. We don't currently have all the necessary information to inform this, but will be able to share more details at stage one consultation.</p>	
g	<p>Noise</p> <p>It was asked what sort of noise will be able to hear from the wind turbines, and if it will be antisocial. This included questions about infrasound.</p> <p>Response</p> <p>It was confirmed that background noise will be low level, and is dependent on proximity of properties to turbines, the topography and landscape on and around the site. Any properties that may be impacted will be monitored for background noise. The noise assessment will be undertaken in strict accordance with the EIA guidelines.</p>	

	<p>There is no requirement for infrasound to be assessed separately as part of a wind farm noise impact assessment. The available evidence does not indicate that infrasound from wind turbines at typical levels gives rise to physiological effects in humans.</p>	
<p>h</p>	<p>Grid connection</p> <p>A parish representative asked where the electricity would connect to the National Grid.</p> <p>Response</p> <p>It was explained that due to grid connection reforms and windows for application, the location and route remains unclear. Possible route options will be considered as part of the application.</p> <p>Following this response, attendees expressed frustration that a project is being advanced without a defined export route and raised concerns about the potential impacts of overhead lines/pylons.</p> <p>The project team explained that this is a common criticism of consultation on infrastructure projects. When projects are consulted upon at the early stage, they are often criticised for not having enough detail. However, if they consult with lots of detail, they are criticised for making all the decisions in advance and not taking local views into account.</p>	
<p>i</p>	<p>Historic context and previous proposals</p> <p>A parish representative with prior planning experience asked what has changed since an earlier refused scheme (noting turbines are now larger and nearer sensitive landscapes).</p> <p>Response</p> <p>The principal change was described as policy drivers (net zero/climate emergency and energy security). Final decision-making described as balancing impact and benefits through the DCO examination and Secretary of State decision.</p>	

<p>j</p>	<p>Battery storage</p> <p>A parish representative asked whether battery storage is proposed.</p> <p>Response</p> <p>It was confirmed that this is not currently being considered for Hope Moor.</p>	
<p>k</p>	<p>End of life and decommissioning</p> <p>A parish representative asked what happens after ~30 years; will land be restored; can the project be expanded.</p> <p>Response:</p> <p>Options include decommissioning or repowering.</p> <p>Any repowering would require further consents and assessment.</p> <p>If the site were decommissioned, all above-ground infrastructure would be removed and the land restored to the same or better condition. Current best practice is to leave concrete foundations largely in situ, as set concrete is inert and removing it can cause greater environmental disturbance than leaving it in place.</p> <p>It is also worth noting that the way the UK generates energy may evolve over the next 30 years. Any decision on repowering or replacement technologies would be made in line with the prevailing policy, technology and environmental standards at that time.</p>	
<p>l</p>	<p>Construction access and abnormal loads</p> <p>A parish representative asked about feasibility of delivering parts given local road constraints.</p> <p>Response</p> <p>It was confirmed that route analysis and modelling is underway, with a traffic assessment forming part of the application. Mitigation options would be developed. Some attendees referenced alternative approaches used elsewhere (e.g., helicopter lift), but no conclusion was reached.</p>	

<p>m</p>	<p>Compulsory acquisition / wayleaves (especially for export route)</p> <p>A parish representative asked if the export corridor(s) might lead to compulsory acquisition.</p> <p>Response</p> <p>Due to recent grid reform changes, we do not yet have a specific connection point into the national grid. Possible route options will be considered as part of the application.</p> <p>As it will be the relevant energy distributor who ultimately brings forward the application for the specific alignment, compulsory acquisition powers could be sought; however, private agreements are typically preferred over the use of CPO powers.</p> <p>An attendee challenged this based on recent experience nationally.</p>	
<p>n</p>	<p>Governance, transparency, and role of this parish forum</p> <p>Parish representatives raised concern about being perceived as receiving “inside information” and asked for clarity on the forum’s purpose.</p> <p>Key points raised:</p> <ul style="list-style-type: none"> o Need for a Terms of Reference (ToR). o Use proper parish council communication channels (e.g., via clerks rather than individual councillors). o Strong request to allow two parish representatives per parish to attend for transparency/accountability. o Suggestion from Barningham Parish Meeting representatives to consider inviting the local opposition group to the CLG (parked for later consideration). o Requests for clarity on which parishes are in scope and why (14 parishes referenced; concern about neighbouring parishes sharing assets/impacts not being included) 	<p>A terms of reference (ToR) has been shared with these minutes.</p> <p>We will, where this channel has confirmed receipt, use the requested clerk channels</p> <p>We are happy to allow parishes to send more than one representative, with a maximum of two attending each meeting.</p> <p>We are in the process of arranging a separate meeting with the local opposition group.</p> <p>A map of the 14 host and neighbouring parishes has been shared at the end of these minutes. We are happy to consider requests for additional parishes to be included, and will assess</p>

	<ul style="list-style-type: none"> ○ It was requested that as much notice as possible of a next meeting will be shared due to the infrequency of council meetings. ○ It was shared that bigger village halls or venues may be required for further events 	<p>these on a case by case basis.</p> <p>We have shared with this document a suggestion of a date for the next meeting.</p> <p>We will review other local venues and take this into account when planning consultation events.</p>
<ul style="list-style-type: none"> ○ 	<p>Consultation timing and constraints</p> <p>Attendees emphasised that lambing season significantly affects availability and asked the team to avoid scheduling key consultation activity at times when participation would be limited.</p>	<p>We are aware that local people want information on this project as soon as possible, so we are not keen on pushing back the launch of consultation into June.</p> <p>Instead, we'll extend the consultation period so local people can take part, with events at the start and end of June to accommodate those busy with lambing season.</p>



CLG Invitees

1. Hope and Scargill Parish Meeting (NY)
2. Newsham Parish Council (NY)
3. Barningham Parish Meeting (CD)
4. Marske and New Forest Parish Council (NY)
5. Dalton Parish Council (NY)
6. Arkengarthdale Parish Council (NY)
7. Gayles Parish Council (NY)
8. Hutton Magna Parish Meeting (CD)
9. Marrick Parish Council (NY)
10. Rokeby, Brignall & Egglestone Abbey Parish Council
11. Wycliffe with Thorpe Parish Meeting (CD)
12. Bowes Parish Council (CD)
13. Gilmombe Parish Meeting (CD)
14. Reeth Parish Council (NY)