



Drillware



CLOSE THE LOOP ON WASTED WATER.

ENVIRON SRS CENTRIFUGE

Minimize your water usage, while maximizing the life of your downhole tools and penetration rate.

WATER IS PRICELESS. DON'T WASTE A DROP.

To complete an average 1000m NQ hole, you may be wasting up to 577,600 litres of water – just to reach depth. What if you could do the same with just 2,400 litres of water? With the SRS Centrifuge, this is possible.



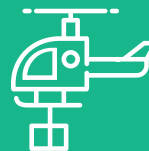
Zero Water Discharge

Reducing water consumption by up to 90%, the SRS Centrifuge discharges no water and returns pure, clean water to the drill string.



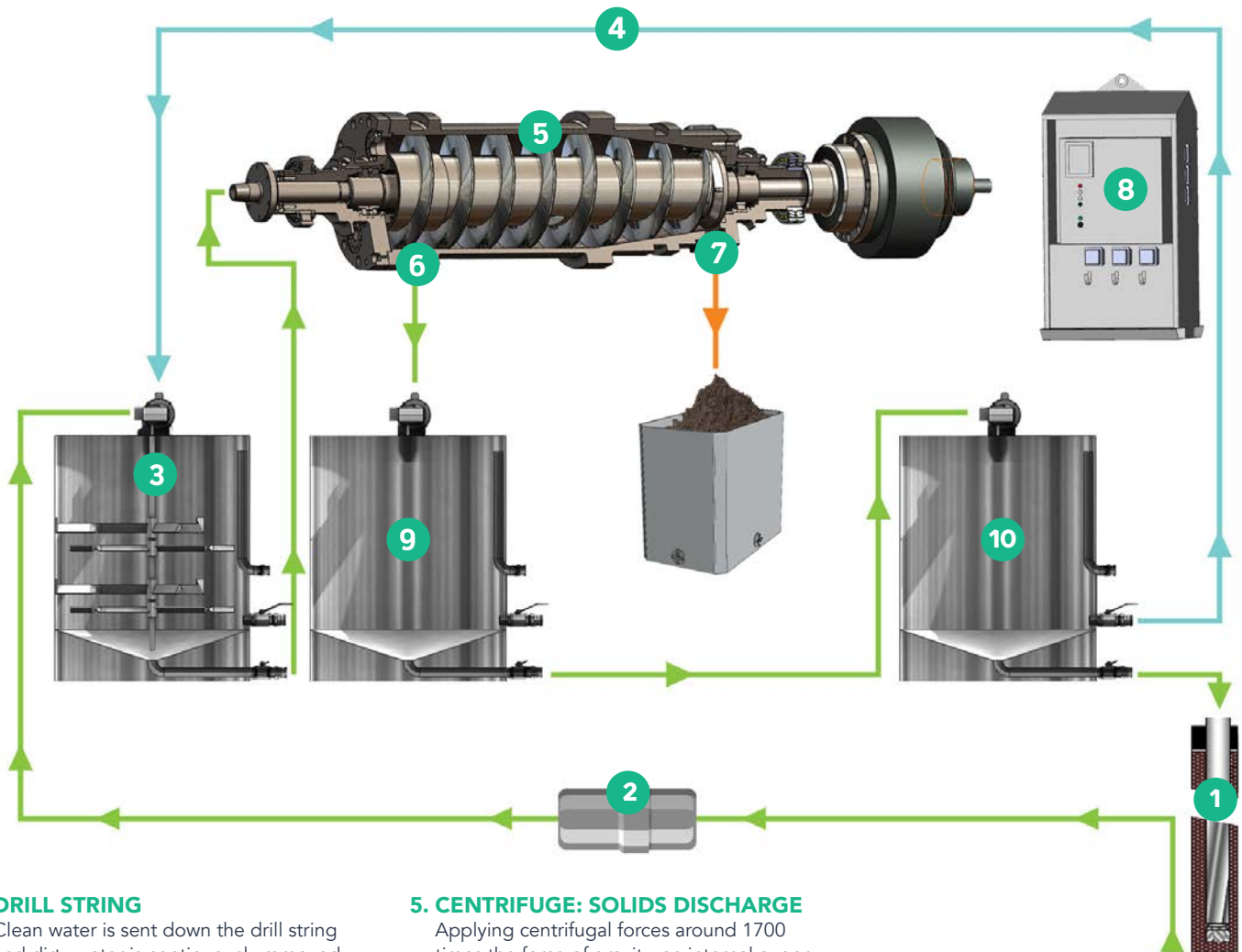
Effective Solids Removal

Cuttings removed from the drilling fluid can be easily stored and transported at a solid, easily packaged consistency – no permitted sump required.



Uniquely Portable

Compact and lightweight, the SRS Centrifuge maintains a small footprint and can be packaged for pad, fly, skid or underground.



1. DRILL STRING

Clean water is sent down the drill string and dirty water is continuously removed – extending the life of your tools, while increasing your penetration rate.

2. PRE-FILTER

Dirty water returns from the hole and is fed through a pre-filter to remove any burlap and splinters.

3. DIRTY MUD TANK

Dirty water from the pre-filter is treated and kept in suspension to maintain an even consistency. From here, it is sent to the centrifuge.

4. RECIRCULATION OF OVERFLOW

If the fluid is not needed at the drill, it is continuously recirculated and purified. The system can run without supervision and without worrying about overflows.

5. CENTRIFUGE: SOLIDS DISCHARGE

Applying centrifugal forces around 1700 times the force of gravity, an internal auger separates solids from water.

6. CENTRIFUGE: SOLIDS REMOVAL

Solids exit the system with the consistency of drywall compound and can be easily stored or transported off-site.

7. CENTRIFUGE: CLEAN WATER DISCHARGE

A closed loop system, the centrifuge returns clean water to the cleaned mud tank, where it is ready to be recirculated.

8. CONTROL UNIT

Powered by a Mitsubishi 15hp A800 VFD with simple controls. No technician required.

9. CLEANED MUD TANK

The centrifuge feeds clean water here, where it is ready to be sent to the mud tank at the drill.

10. MUD TANK AT DRILL

Feeds clean water down the drill string. Defaults to continuous recirculation when water is not needed.