



Features at a glance

- Marine grade aluminium frame and stainless steel hardware for longevity
- Elegant and simple to operate tilt system
- Rotates 360°
- Durable high performance hub and fittings
- Custom designed protection cover included

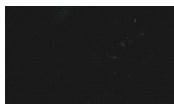
Canopy

- Commercial Grade: 100% solution dyed
- Maintenance: All fabrics can be washed and are replaceable
- Shade Rating: UPF 50+
- Colourfastness: 4/5
- Weight: 290 g/m²
- Waterproof Rating: >300mm water column

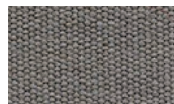
Stock Colours*



Egg Shell White



Black Widow



Boulder Grey

*other non-stock colours available on request.

Mounting Options

Surface Plate

For deck, patio and concrete mounting.



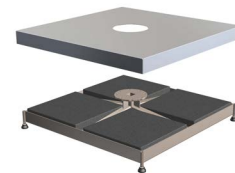
In-Ground Anchor

For mounting with a concrete footing.



Free-Standing Base*

For complete customized maneuverability.



*Concrete Pavers are required for ballast (not supplied)
Castor Wheels are optional.

BEST-IN-CLASS WARRANTY

Relax easy knowing your outdoor umbrella purchase is protected by the industry's best warranty (conditions apply) and customer support.



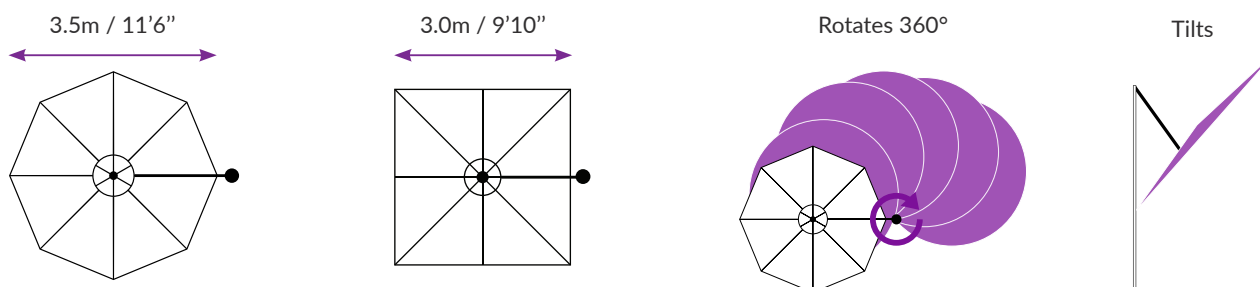
Fabric
Warranty



Frame
Warranty

TILTING OFFSET UMBRELLA

Size & Configuration



Umbrella Dimensions



Diagram Legend

- A** Clearance of Closed Strut Arms*
- B** Depth of Umbrella When Closed
- C** Overall Height*
- D** Height to Edge of Canopy*
- E** Height to Centre Hub*
- F** Handle Height*
- G** Canopy Width
- H** Centre of Mast to Outside Edge of Canopy

3.5m / 11'6" Octagon

- 880mm / 2'11"
- 450mm / 1'6"
- 2723mm / 8'11"
- 2125mm / 7'0"
- 2065mm / 6'9"
- 940mm / 3'1"
- 3480mm / 11'5"
- 3595mm / 11'10"

3.0m / 9'10" Square

- 880mm / 2'11"
- 450mm / 1'6"
- 2723mm / 8'11"
- 2125mm / 7'0"
- 2065mm / 6'9"
- 940mm / 3'1"
- 3000mm / 9'10"
- 3595mm / 11'10"

*Free-Standing Base installations will add 120mm/4.7" to the height and surface plates will add 12mm | ½" to the height. Adding Free-Standing base wheels also will add a further 45-80mm | 2-3". All sizings are +/- 2.5mm | ⅜" and subject to change without notice.

