



## Features at a glance

- Simple and easy to open and close
- Heavy-duty double pulley system
- Commercial grade pulley rope
- Glass-filled nylon high-performance hubs and brackets
- Marine grade anodised aluminium frame and pole
- Stainless steel fastenings and components
- Commercial strength pole with a large diameter and thick aluminium wall
- Custom designed protection cover included



All Shadowspec SU2 Umbrellas have eight full strength 20mm x 33mm / ¾" x 1⅓" strut arms.

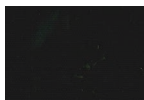
## Canopy

- Premium 100% solution dyed canopy
- Maintenance: All fabrics can be washed and are replaceable
- Shade Rating: UPF 50+

### Stock Colours\*



Egg Shell White



Black Widow



Cobalt Blue



Rich Red



Boulder Grey



Lemon Yellow

\*other non-stock colours available on request.

### Custom Branding

We specialise in custom branding umbrellas with your logo/brand.



## BEST-IN-CLASS WARRANTY

Relax easy knowing your outdoor umbrella purchase is protected by the industry's best warranty (conditions apply) and customer support.



**Fabric  
Warranty**



**Frame  
Warranty**

# SU2 CAFE & RESORT UMBRELLA

## Mounting Options



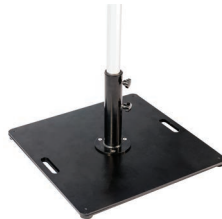
### Concrete Base

Is suitable for 2.0m / 6'7" Square & 2.7m / 8'10" Octagon sizes only.



### Surface Plate

Bolt-down mounting option. Suitable for all SU2 sizes.



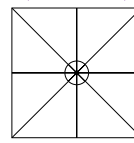
### Steel Flat Plate Base

Single plate (approx 30kgs) recommended for 2.0m / 6'7" Square & 2.7m / 8'10" Octagon sizes.

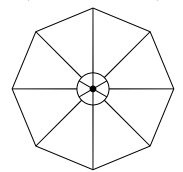
Double plate (approx 50kgs) recommended for 3.0m / 9'8" Square & 4.0m / 13'1" Octagon sizes.

## Size & Configuration

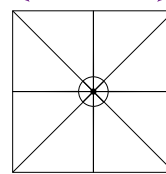
2.0m / 6'7"



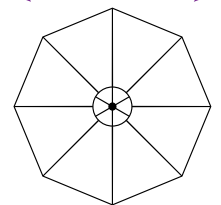
2.7m / 8'10"



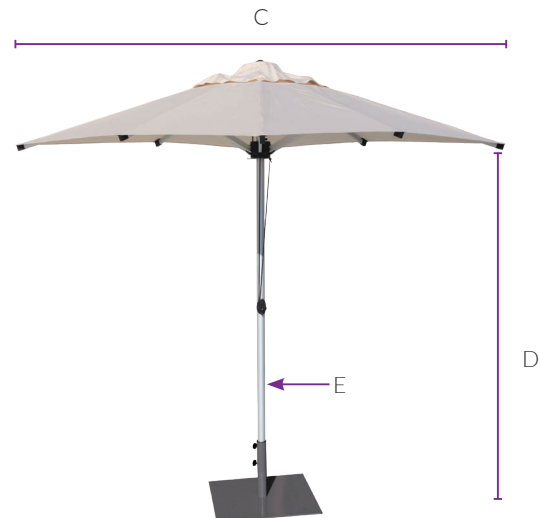
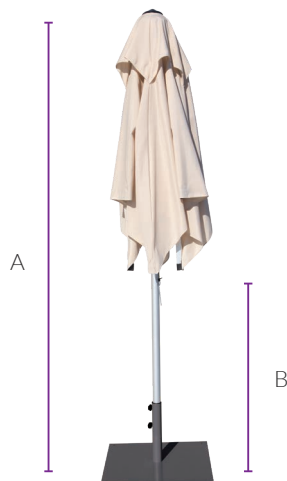
3.0m / 9'10"



4.0m / 13'1"



## Umbrella Dimensions



### Diagram Legend

		2.0m / 6'7"	2.7m / 8'10"	3.0m / 9'10"	4.0m / 13'1"
<b>A</b>	Overall Height*	2600mm / 8'6"	2645mm / 8'8"	2935mm / 9'8"	2850mm / 9'4"
<b>B</b>	Clearance of Closed Strut Arms*	1150mm / 3'10"	1250mm / 4'1"	780mm / 2'7"	815mm / 2'8"
<b>C</b>	Canopy Width*	2000mm / 6'7" sq.	2700mm / 8'10" dia.	3000mm / 9'10" sq.	4000mm / 13'1" dia.
<b>D</b>	Head Clearance*	2200mm / 7'3"	2200mm / 7'3"	2295mm / 7'6"	2260mm / 7'5"
<b>E</b>	Pole Outside Diameter	38mm / 1½"	38mm / 1½"	48mm / 2"	48mm / 2"

Note: All measurements are rounded and are subject to change. Adding portable base wheels also will add a further 45-80mm/2-3" to the height.



**shadowspec**  
umbrellas with distinction