

# J-68 Board Reset Guide

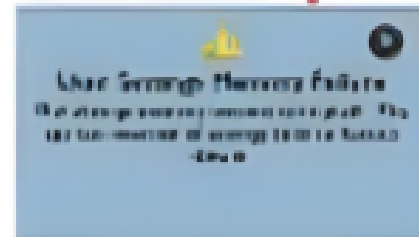


## Irregular Spa Performance is Observed

### Power Spa Down

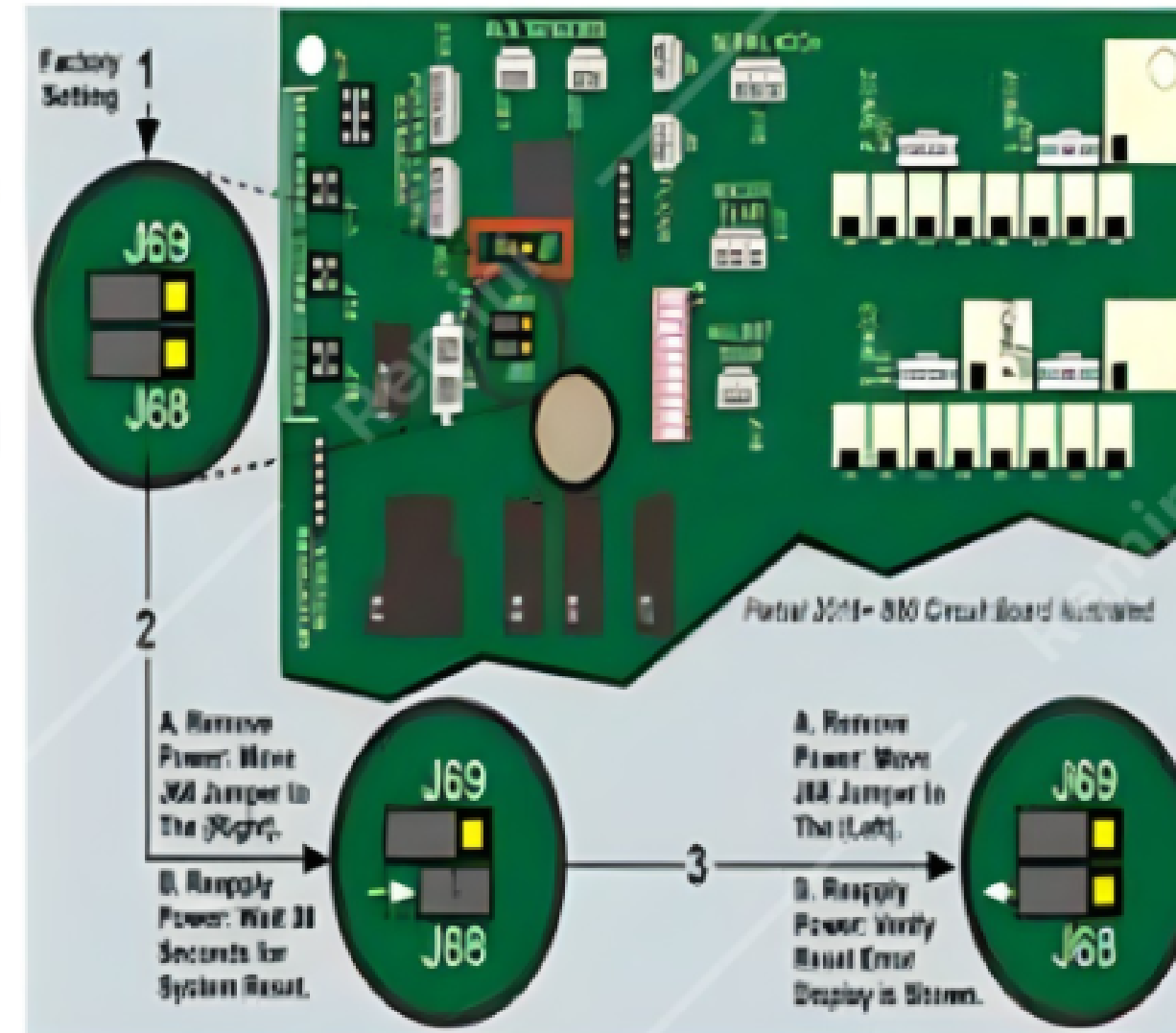
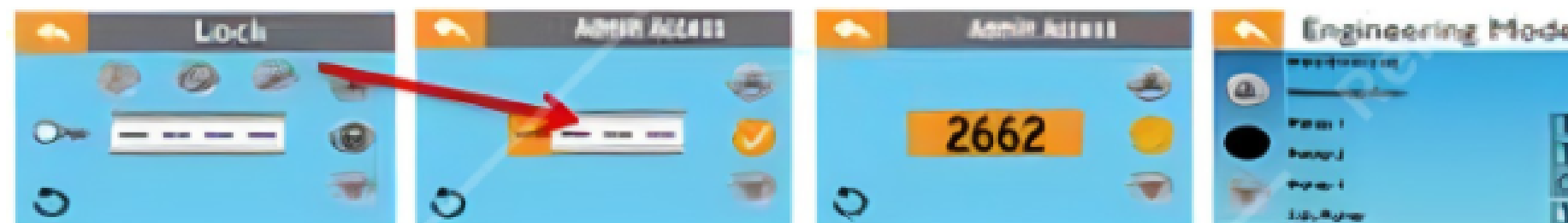
Locate J68 on Board (Board might have a jumper, usually on 1 pin) or no jumpers.

- Place jumper across both pins at J68.
- Power Spa On,
- Error Code "User Settings Memory Failure" will appear to confirm Reset.
- Wait 30 seconds to reset. This will allow for all factory default settings.
- Power Spa Down.
- Set jumper back to 1 pin.
- Power Spa On.



Will reset ALL counter timers; ClearRay, Water Refresh ect. Will set back to Auto Heating, Away setting and will ask to Re-register Spa.

Confirm Component Application:



Box with number means:

- 0 – Not Activated
- 1 – Activated and set at 1 Speed (If applicable, should **ALWAYS** say 1)
- 2 – Activated and set at 2 Speed (Never want to set to 2)