



Features at a glance

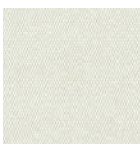
- Marine grade aluminium frame and stainless steel hardware for longevity
- Elegant and simple to operate tilt system
- Rotates 360°
- Durable high performance hub and fittings
- Custom designed Protection Cover included

Canopy

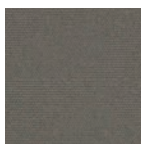
- Commercial Grade: 100% solution-dyed
- Maintenance: All fabrics can be washed and are replaceable
- Shade Rating: UPF 50+
- Colourfastness: 4/5
- Weight: 290 g/m²
- Waterproof Rating: >300mm water column



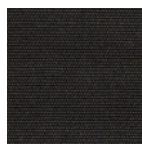
Stock Colours*



Egg Shell White



Boulder Grey



Black Widow

*Special Order Colours available on request

Mounting Options

Surface Plate

For deck, patio and concrete mounting.



Note: Fastenings are not supplied for the Surface Plate.

In-Ground Anchor

For mounting with a concrete footing.



Free-Standing Base + Aluminium Base Cover

For complete customised maneuverability.



*Optional Castor Wheels shown.
Note – Concrete Pavers are required for ballast (not supplied).*

BEST-IN-CLASS WARRANTY

Relax easy knowing your outdoor umbrella purchase is protected by the industry's best warranty (conditions apply) and customer support.

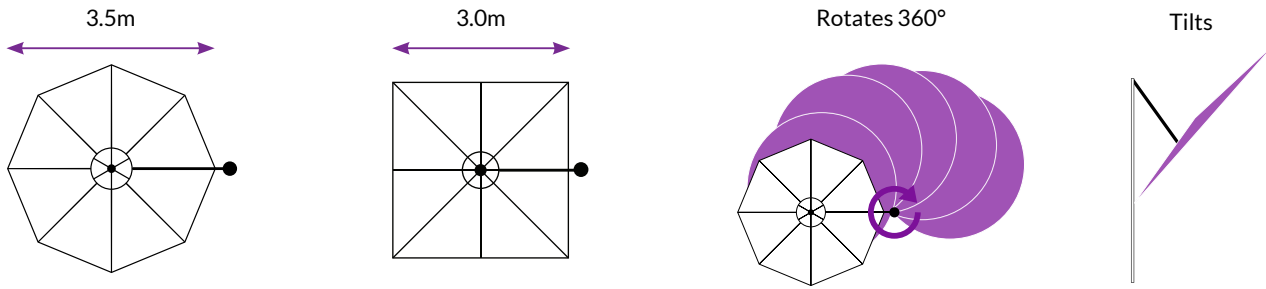


**Fabric
Warranty**



**Frame
Warranty**

Size & Configuration



Umbrella Dimensions



Diagram Legend

	3.5m Octagon	3.0m Square
A Clearance of Closed Strut Arms**	864mm	483mm
B Depth of Umbrella When Closed	508mm	508mm
C Overall Height**	2718mm	2744mm
D Height to Edge of Canopy**	2134mm	2032mm
E Height to Centre Hub**	2032mm	1931mm
F Handle Height**	889mm	889mm
G Canopy Width	3480mm	2998mm
H Centre of Mast to Outside Edge of Canopy	3582mm	3353mm

**Free-standing Base installations will add 177mm to the height and surface plates will add 12mm to the height. Adding Free-standing Base wheels will add a further 45-80mm. All sizings are approximate only and subject to change without notice.

