

1967 - 69 CAMARO HEADLINER INSTALL

Tools Needed:

1. Awl Scratch Tool
2. Plastic Trim Tool
3. Phillips Screwdriver
4. Spring Clamps
5. Plastic Puddy Knife
6. Needle, tack, or small pointed object

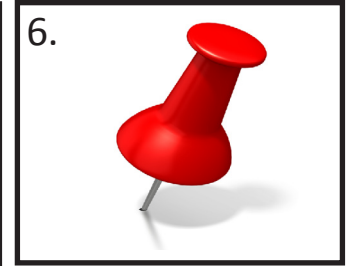
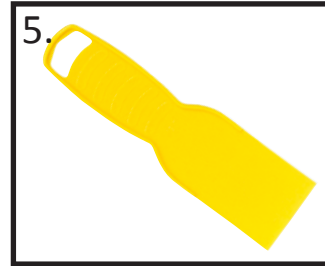


Table of Contents

I. Tools Needed.....	1
II. Factory Headliner Removal & Spacer Placement.....	1
III. Install TMI Headliner.....	2
IV. Locate Factory Visor Mounting Holes.....	3
V. Install Mirror Bracket/Visor Retaining Clip.....	3
VI. Install Sail Panels.....	3
VII. Install A-Pillar Cover.....	4
IX. Re-Install Windlace/Package Tray.....	4

Step 1 Remove Headliner

Before you begin to install your new Headliner, you must first remove all old hardware . This includes the removal of your:

- Sun Visors
- Windlace

- Rear View Mirrors
- Back Seat

- Coat Hanger Hooks
- Rear Quarter Panels

- Door Sill Plates
- Package Tray



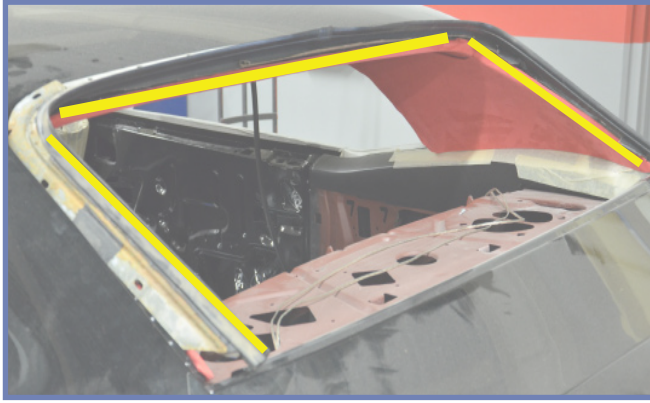
1. Pull material away from Front & Rear windshield windlace



2. Match your holes on your spacer to your original visor mount holes so they align correctly, use double sided tape and stick them on the top of your ceiling between headliner.

THIS STEP IS FOR 1969 ONLY.

3. You will need to remove the front and rear metal windshield frame and trim-lock, This step is **REQUIRED** or your headliner will not fit.



Caution: Once headliner is removed, it is highly recommended to not dispose of your bow rods. Bow Rods are not reproduced and can only be replaced by originals.



Step 2 Install Headliner



This picture displays the careful installation of the headliner with the help of an extra person.

Before installing the headliner, make sure you have a second person to help. To begin installation, roll all four side windows completely down. Starting from the driver's side, slide the headliner into the vehicle. Make sure to pull headliner up and over the steering wheel. Locate the pre-drilled rearview mounting holes in the headliner and poke through the material of one hole with your scratch awl tool. From here, use the scratch awl tool as a guide to find the factory mounting holes for the rearview mirror. Once you have found one hole, find the remaining holes using the same method. This will ensure the headliner is positioned properly from front to rear along with side to side. It is recommended that you **DO NOT** mount your rearview mirror at this point.

Have your second person use the spring clamps to hold the headliner in place.

1. Make sure you pull headliner through the driver's side over the top of the steering wheel.



Note: Spring Clamps are very important when installing your headliner. They are the main tool you will utilize to hold your headliner in place once you are finished centering the headliner. Spring Clamps will ensure proper alignment of your headliner installation.

Once centered, use Spring Clamps to hold headliner in place.



Step 3 Locate Factory Visor Mounting Holes

Once the holes have been located, begin to install the visors .

Using a small sharp tool such as a tack or needle, locate the factory visor mounting holes in the roof of your vehicle. Locate these holes in the front corners of the headliner on the left and right side. Once located, you can now begin installing the screws for your visors.



Note: *It is recommended to use a tack or needle to poke through the material first, this avoids leaving large holes.*

Step 4 Install Mirror Bracket/Visor Retaining Clip



This picture illustrates the installation of the mirror bracket and/or visor retaining clip.



Step 5 Install Sail Panels

To efficiently install your Sail Panels (C-Pillar Covers), remove the tack strip with a phillips screwdriver. Position the sail panel by sliding it backward so that the tab goes under the headliner, then easily push the panel in until it fits in place. Repeat this step for the other side.



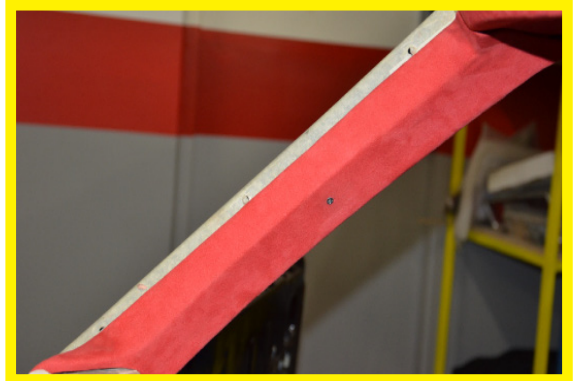
Slide the sail panel up so that the TAB goes under-headliner, slide the sail panel into position.



Caution: *When installing your sail panels, please make sure **YOU DO NOT TUCK SAIL PANELS UNDER THE HEADLINER.** This will prevent proper installation.*

Step 6 Install A-Pillar Cover

Locate the A-Pillar Cover starting from the dashboard to the Headliner. You will need to drill about a 1/4 inch into pillar to hold it into place.



Step 7 Re-install your Windlace

You can now re-install your windlace. You will need a razor or scissors to trim the excess headliner material for the windlace to fit properly. BE CAREFUL you do not trim too short. See pictures on the right for reference.



You may need to trim the excess headliner material to fit with windlace, after doing so, process for applying windlace is much smoother and fits easier.

Step 8 Install Package Tray

Once your Headliner is in place, you can now re-install your Package Tray or purchase a completely new TMI Package Tray. Once the Package Tray is placed back properly, you can also re-install your rear quarter corner panels.



1. This picture displays the proper re-installation of your Package Tray back into the vehicle.



2. Re-Install your Rear Corner Panels.



Thank you for choosing TMI, for more information on our product line, please visit our website at , www.tmiproducts.com or feel free to call us at (800)624-7960

Part #99-8069-000
QP 09-270 / Rev. 01