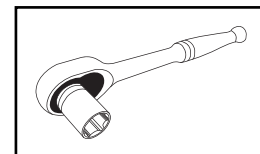


1968 El Camino Dash Pad Installation Instructions

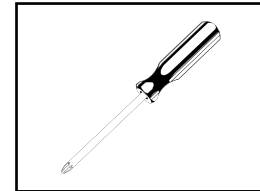


TOOLS NEEDED FOR INSTALL:

1. Phillips Screwdriver
2. 10mm Socket Wrench

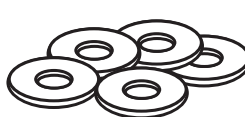


SOCKET WRENCH



PHILLIPS SCREWDRIVER

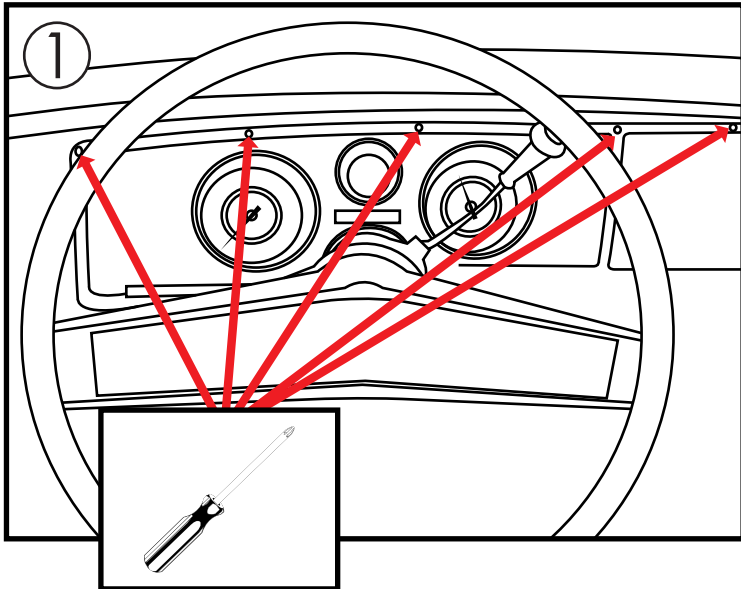
PARTS:



4 WASHERS
(INCLUDED)

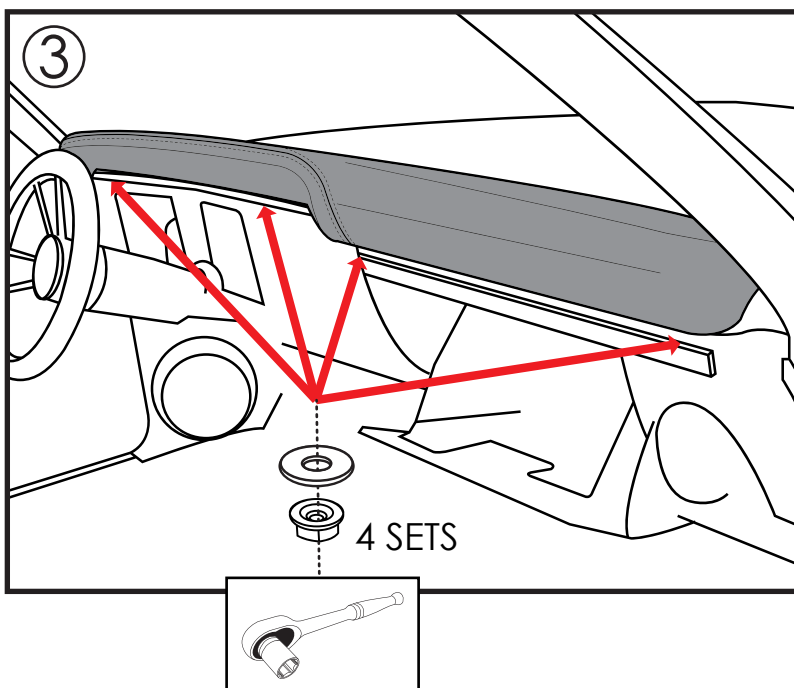
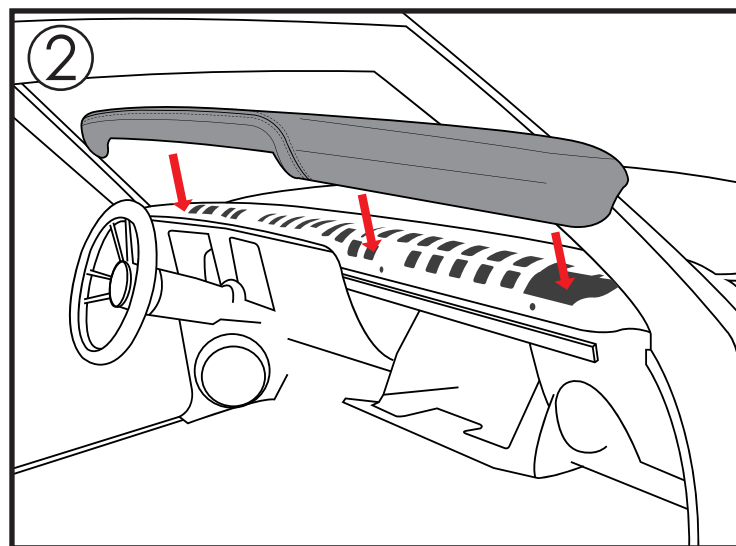


4 - 10mm NUTS
(INCLUDED)



Step 1.) Remove the top (5) screws in the instrument bezel.

Step 2.) Fit the TMI dash pad onto dash. There are four studs total. The two outer studs will go into factory holes. The two inner studs will go into slots in the dash.



Step 3.) To fasten the dash pad down. You will open the glove box and install the washer and nut onto the two studs. For the driver side you will need to get up under the dash and fasten the washer and nuts for the two driver side post. After the studs are properly fastened you can fasten the 5 screws on the instrument cluster.