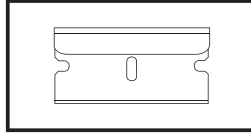
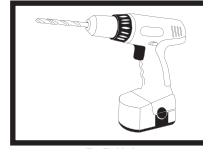


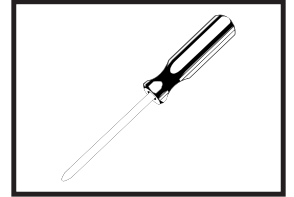
PHILLIPS SCREWDRIVER



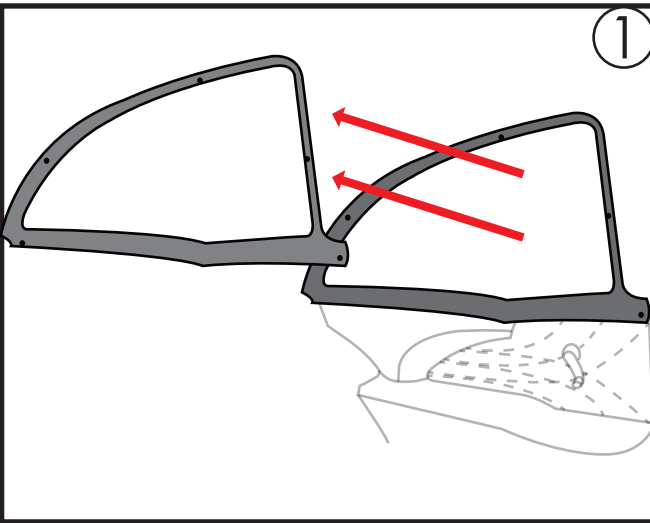
RAZOR BLADE



DRILL

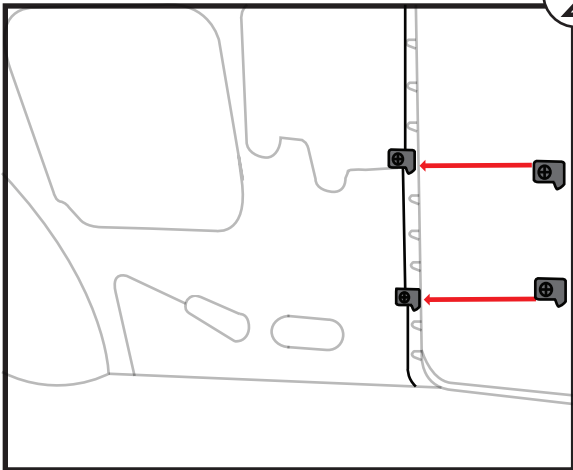


Scratch and Awl



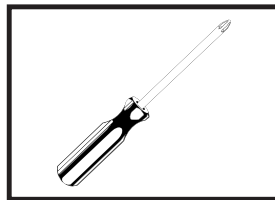
1

Step 1: Remove the quarter window trim piece on the inside of the car. It removes with 5 screws and is re-used for the installation.

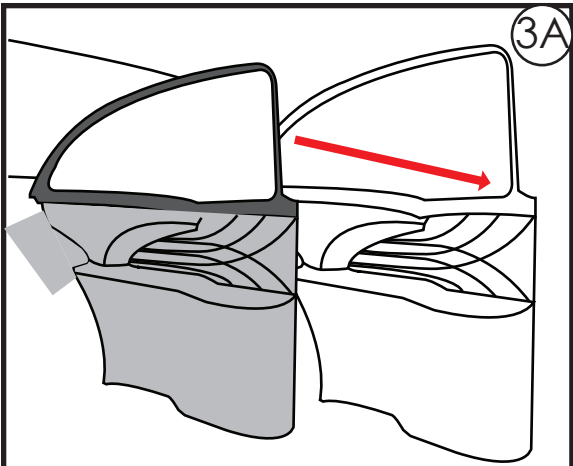


2

Step 2: Installing the two "L" brackets onto the inner quarter structure. There are tabs in a recessed area next to the door jam. The "L" brackets will hang over this recessed area. The first "L" bracket goes 8 in from the floor up. The second "L" bracket will go 16 in up from the floor. seventh tab. They will be fastened with the supplied self tapping screws make sure the open hole is facing the door jam.

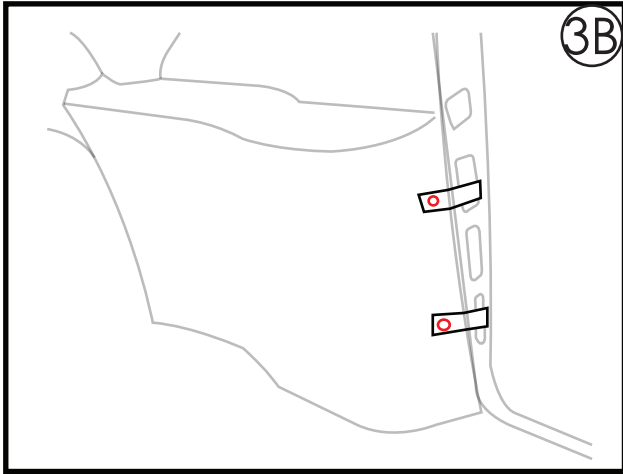


PHILLIPS SCREWDRIVER

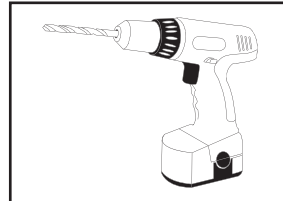


3A

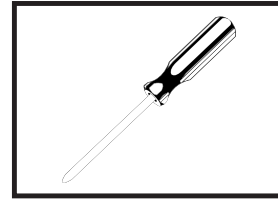
Step 3A: Fit the panel onto the its mounting area. Take note of where your new tabs are installed. Using a piece of masking tape run it from your tab all the way around to the door jam so you have a marked location for the tabs while they are underneath the quarter panel.



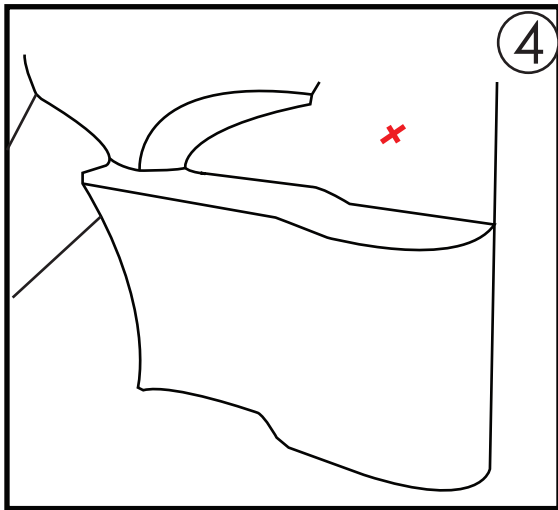
3B Step 3B: Drilling holes into the vinyl. Run masking tape from your tab locating tape on the door jam over the panel. using a 1/8th bit drill a hole through the vinyl and fiberglass. locate the tabs mounting holes with a scratch and awl tool. once the holes are located you can fasten the screws into the brackets behind the panel.



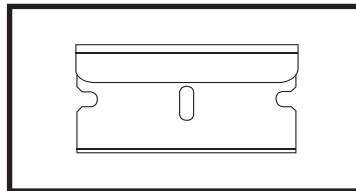
DRILL



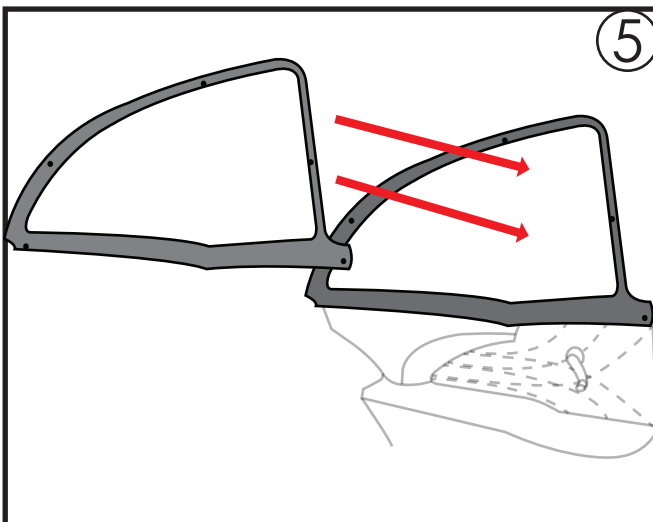
Scratch and Awl



4 Step 4: Installing the window crank after the panel has been mounted. There will be a bulge on the insert of the panel. You will cut a small "X" on top of the bulge as that is your window crank shaft. Each slash of the X will be no longer than a 1/2 in. Once cut you can push the vinyl back over the crank shaft and install the window crank.



RAZOR BLADE



5 Step 5: The final step of assembly is to Re-install the rear quarter window trim piece. It is fastened down with the same five screws that were unfastened in the beginning. once this piece is installed you can install window crank onto the window crank shaft.

Step 7: repeat steps 1-6 for opposite side.