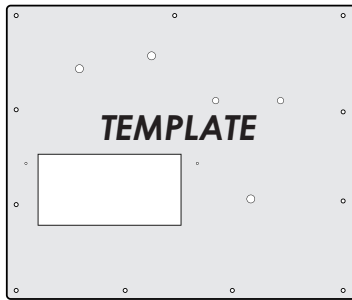
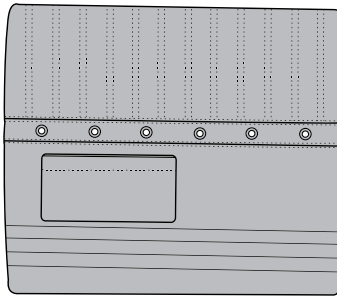


**PARTS:**

TEMPLATE

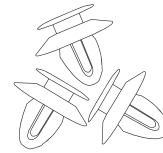
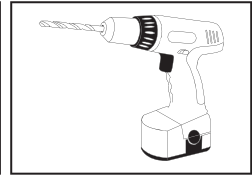
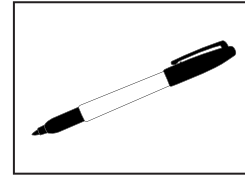
1. Marker
2. Power Drill



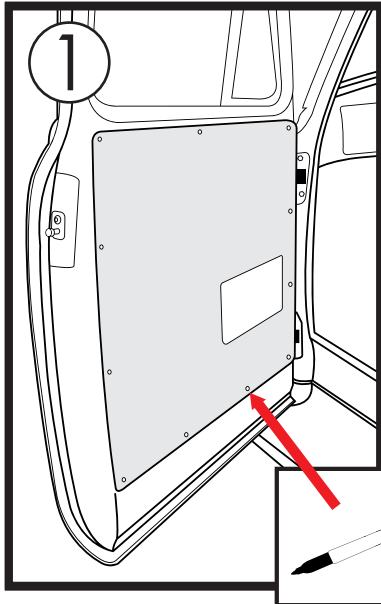
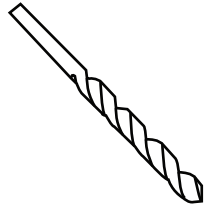
DOOR PANEL

TOOLS NEEDED FOR INSTALL:

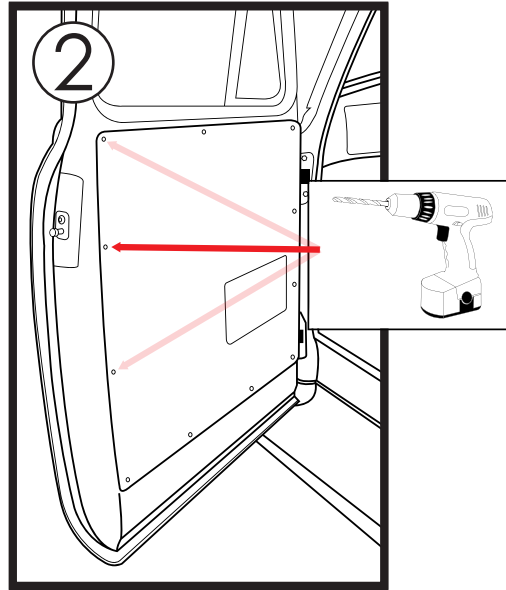
3. 19/32 bit



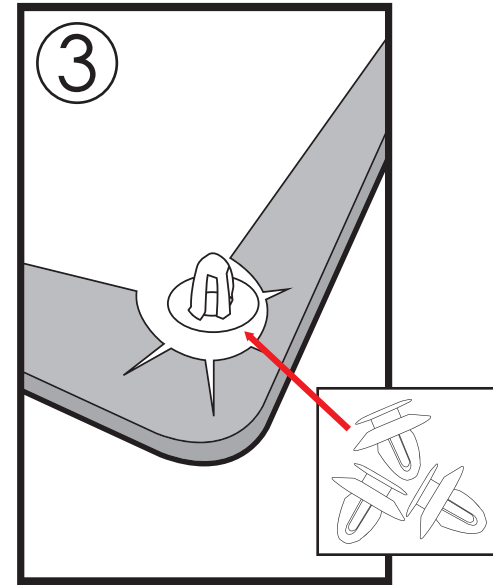
CLIPS



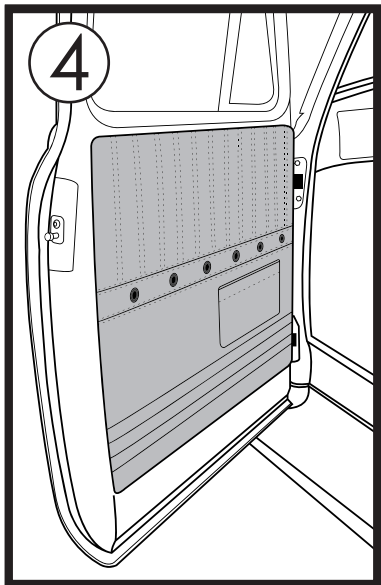
STEP 1: Place Template on door and mark designated holes.



STEP 2: Use 19/32 Drill bit and power Drill to make new clip locations.



STEP 3: Insert Clips into Door Panel in designated locations. Push in and twist until locked in place.



STEP 4: Set Door Panel into place by aligning the clips up over the holes. Once aligned you can push each clip into its hole until you feel/ hear a "snap".

Step 5: Repeat steps 1-4 on the opposite side.