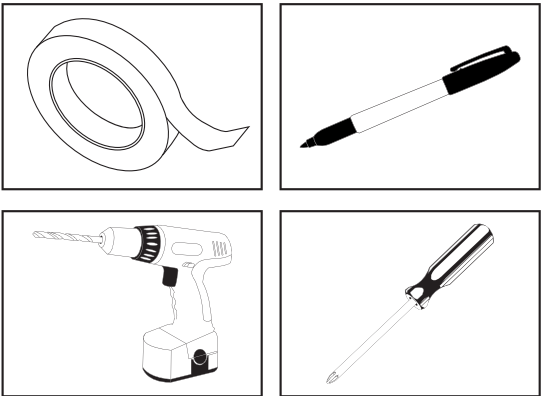


Chevy C10 • 1981-87 Molded Door Panel Installation Guide

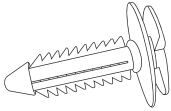


TOOLS NEEDED FOR INSTALL:

- 1. Tape
- 2. Marker
- 3. Power Drill
- 4. Phillips Screwdriver



Door Handle



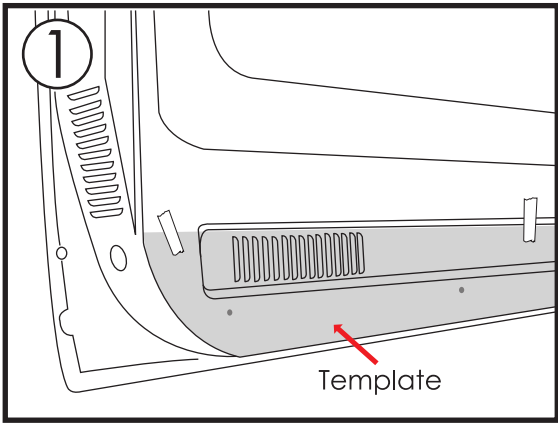
Snap Clips

FRONT



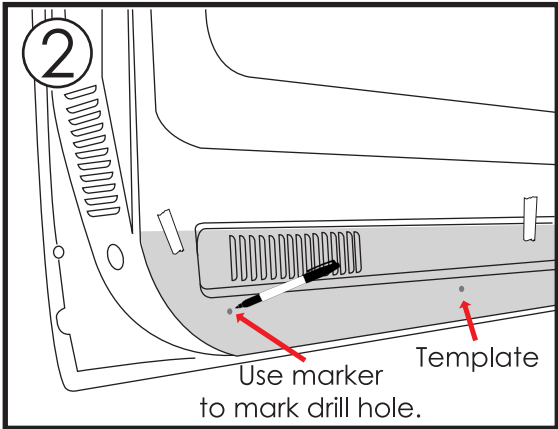
Template

STEP 1: Use Template given for panel placement. Place template on door using tape and determine center and correct placement.



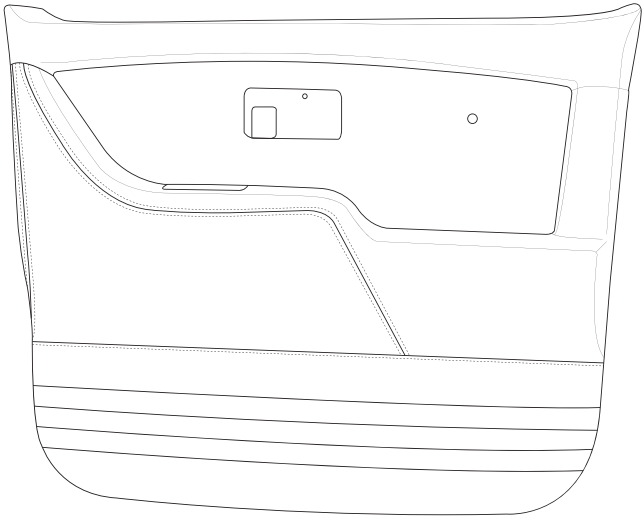
Template

STEP 2: Using Template, mark drill holes with marker. Remove template and clean area to prepare for drilling



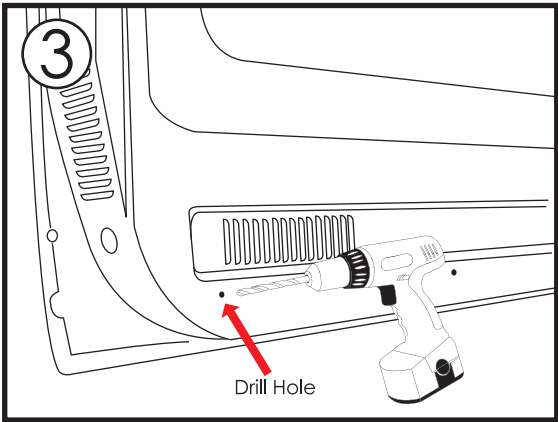
Use marker to mark drill hole.

Template



Molded Door Panel

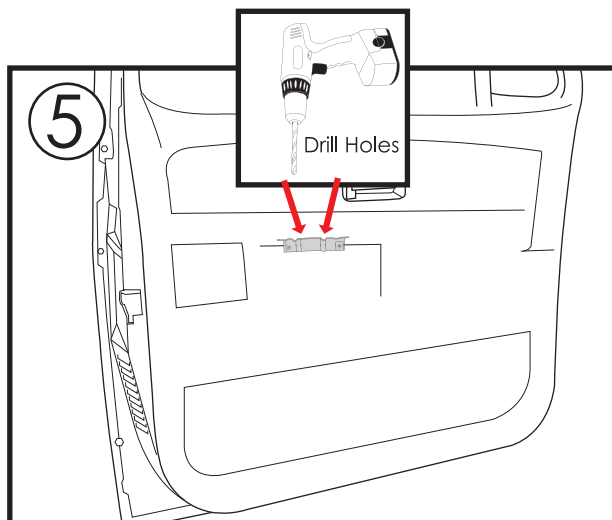
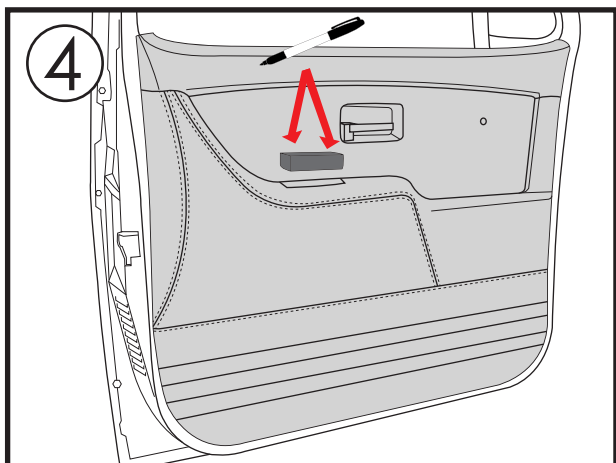
STEP 3: Drill holes using a 19/64" bit.



Drill Hole

STEP 4: Place Door Panel on then place door handle in place. Use Marker to mark drill holes.

STEP 5: Remove Door Panel and Drill holes into factory "L Bracket".



STEP 6: Place door handle in place and fasten with screws (2pcs.) provided.

STEP 7: For opposite side, flip Template and repeat steps 1-6.

