

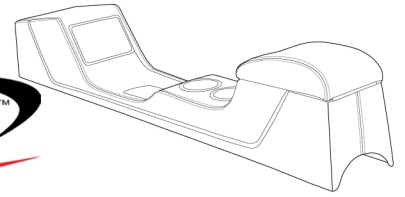


## Mustang Full Length Sport Console Installation Instructions

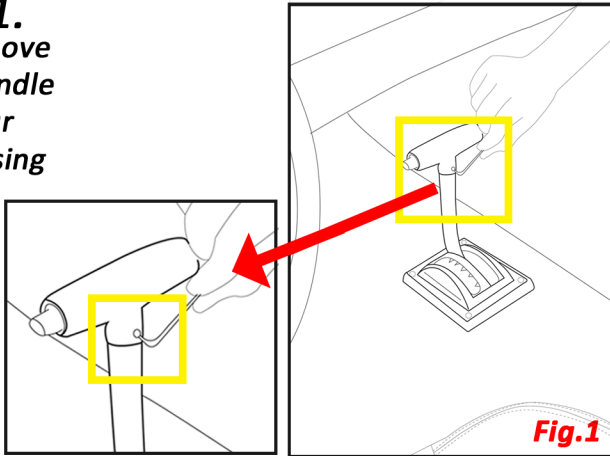
### Automatic Console

#### Tools Needed:

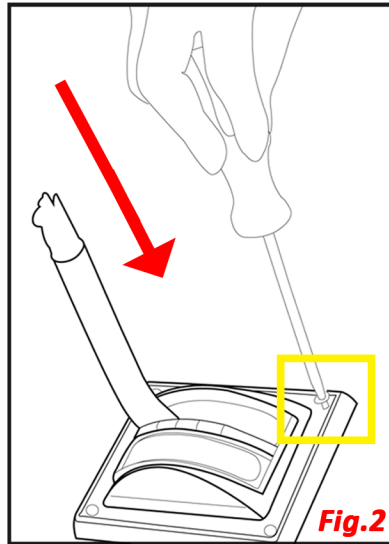
1. Phillips Screwdriver
2. Allen Wrench



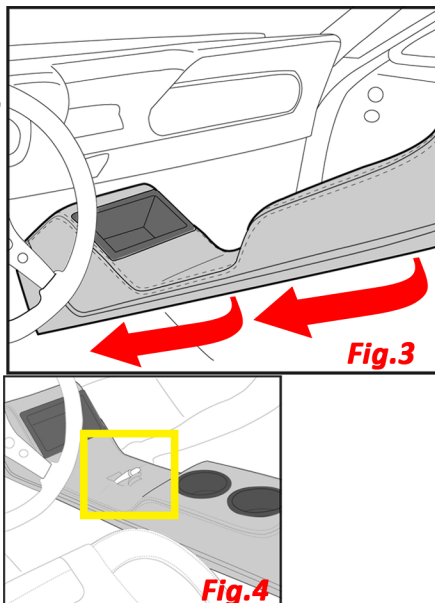
**STEP 1.**  
First, remove the T-Handle from your shifter using the Allen Wrench.



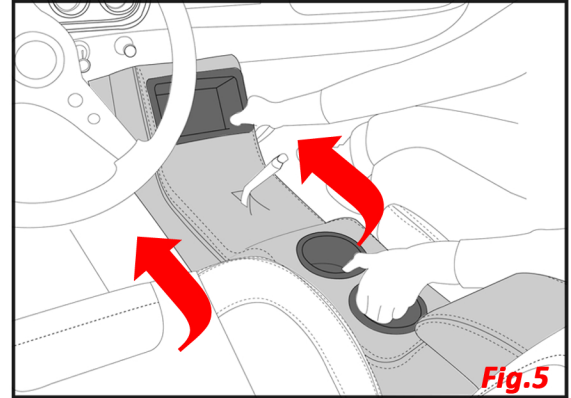
**STEP 2.**  
Remove the shift indicator bezel. There are four Phillips head screws you will need to remove. Next, set the emergency brake or a block under the wheels of the vehicle and move the shift handle back to the drive position.



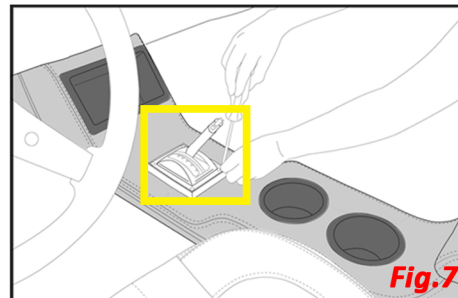
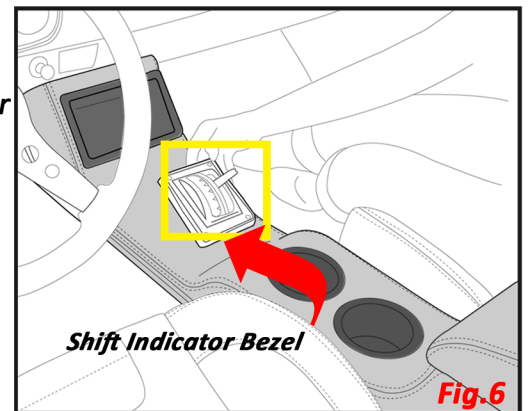
**STEP 3.**  
Lower the console at a 45 degree angle with front down and rear of console up. Slide the console under the dash and lower the rear of console down until the shifter arm is through the hole.



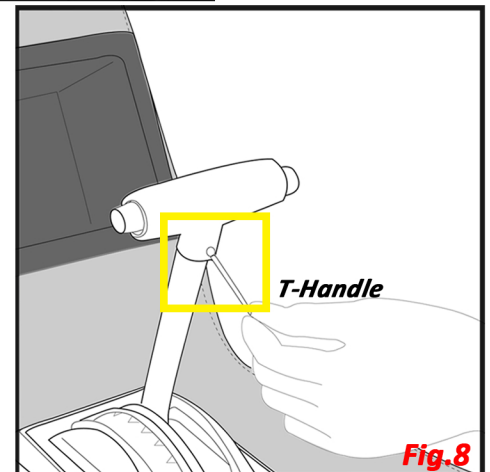
**STEP 4.**  
Move the console completely forward until the shifter arm can be easily moved back into the park position.



**STEP 5.**  
Next, reinstall the shift indicator bezel, re-using the four Phillips Screws.

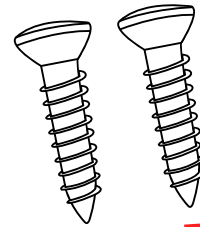
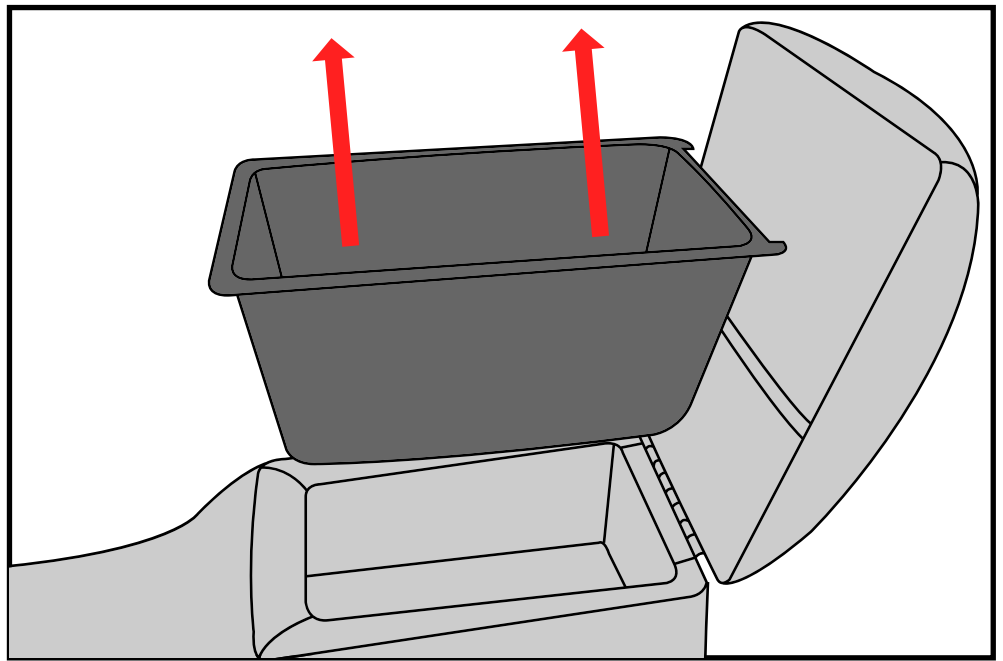


**STEP 6.**  
Finally, reinstall the shift T-handle, using the Allen Wrench.



### **STEP 7.**

*Remove Plastic casing from inside Console.*



### **STEP 8.**

*Use 2 Screws (Included) to mount Console down to center of car floor. Place Plastic casing back into Console. Install Complete.*

