

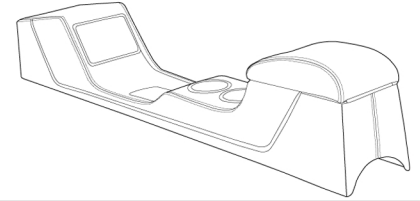


Mustang Full Length Sport Console Installation Instructions

Manual Console (Stick Shift)

Tools Needed:

1. Phillips Screwdriver



STEP 1.

First, remove the shifter ball from your shifter by turning it counter clockwise.

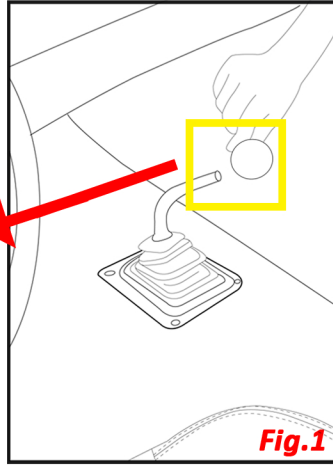
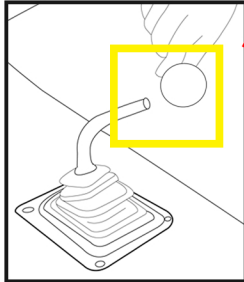


Fig.1

STEP 2.

Remove the chrome bezel. There are four Phillips head screws you will need to remove. Next, set the emergency brake or a block under the wheels of the vehicle and move the shifter handle into second gear.

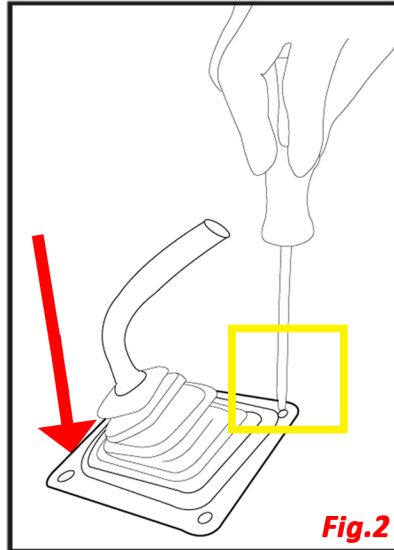


Fig.2

STEP 3.

Lower the console at a 45 degree angle with front down and rear of console up. Slide the console under the dash and lower the rear of console down until the shifter arm is through the hole.

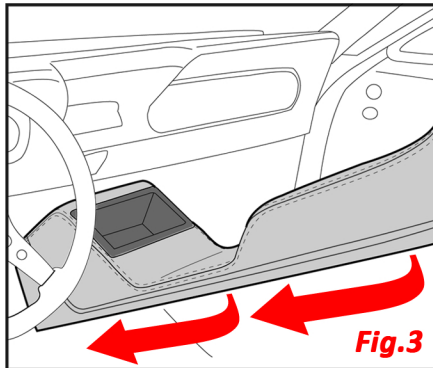


Fig.3

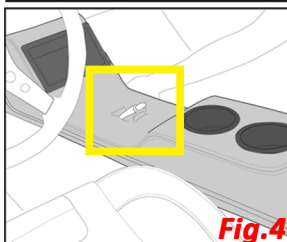


Fig.4

STEP 4.

Move the console completely forward until the shifter handle can be easily moved back into the first gear.

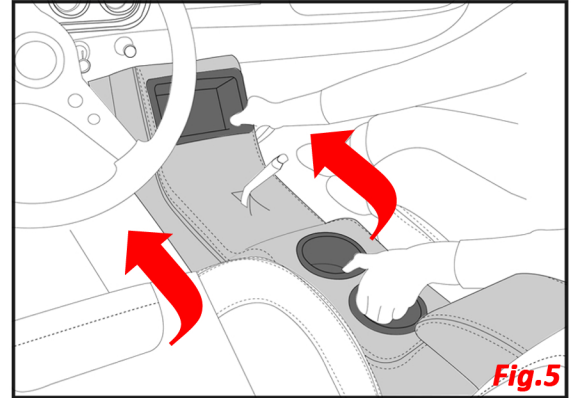


Fig.5

STEP 5.

Next, reinstall shifter ball and chrome bezel, re-using the four Phillips Screws.

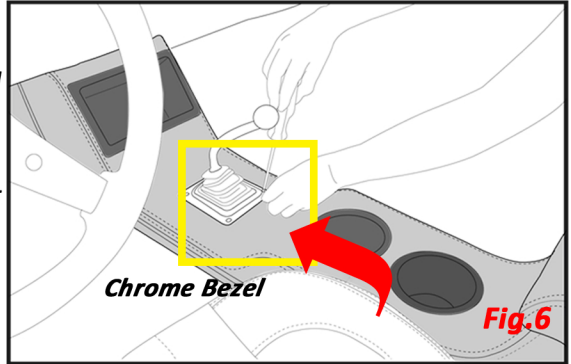


Fig.6

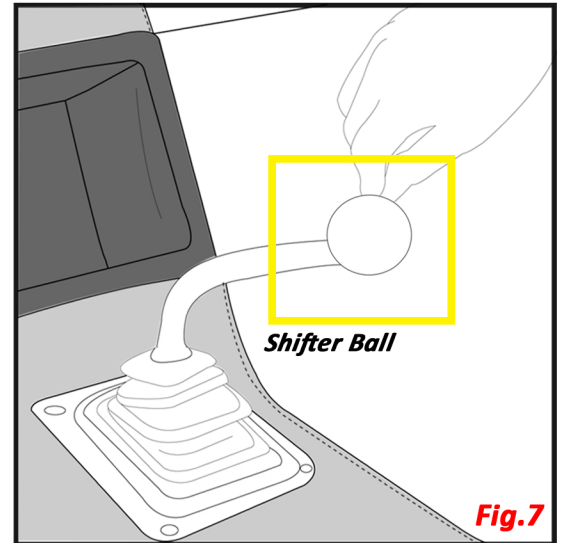


Fig.7

