

1969-70 Mustang Fastback Headliner Install Instructions

Tools Needed:

1. Awl Scratch Tool
2. Plastic Trim Tool
3. Screwdriver
4. Spring Clamps
5. Plastic Puddy Knife
6. Needle, tack, or small pointy object

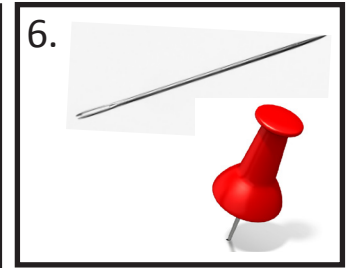
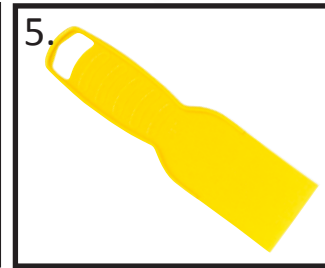
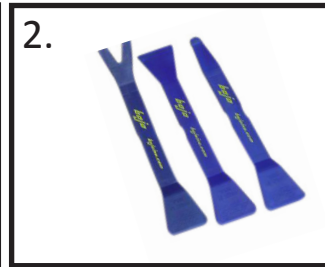


Table of Contents

I. Tools Needed.....	1
II. Factory Headliner Removal.....	1
III. Install TMI Headliner.....	2
IV. Tuck Headliner.....	3
V. Installing Header Panel Strip.....	3
VI. Locate Factory Visor Mounting Holes.....	3
VII. Install Mirror Bracket/Visor Retaining Clip.....	3
VIII. Install Sail Panels.....	4
IX. Install A-Pillar Cover.....	4
X. Re-Install Pinch Welt.....	4

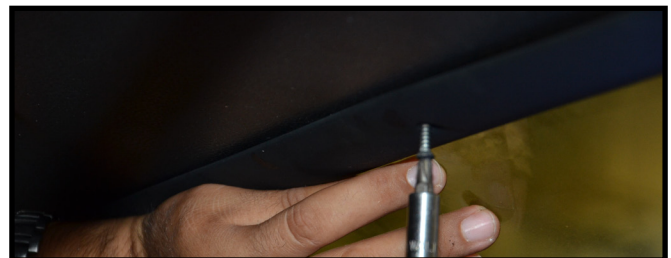
Step 1 Remove Headliner

Before you begin to install your new Headliner, you must first remove all old hardware . This includes the removal of your:

- Sun Visors
- Rear View Mirrors
- Coat Hanger Hooks
- Door Sill Plates
- Windlace
- Back Seat
- Rear Quarter Panels
- Package Tray



1. Pull material away from window rubber seal



Remove header panel from front windshield .



Caution: Once headliner is removed, it is highly recommended to not dispose your bow rods. Bow Rods are not reproduced and can only be replaced by originals.



This picture displays the careful installation of the headliner with the help of an extra person.

Step 2 Install Headliner

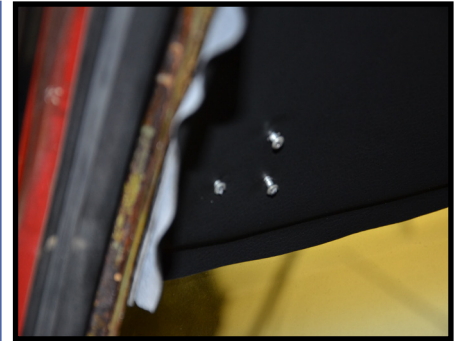
Before installing the headliner, make sure you have a second person to help. To begin installation, roll all four side windows completely down. Starting from the driver's side, slide the headliner into the vehicle. Make sure to pull headliner up and over the steering wheel. Locate the pre-drilled rearview mounting holes in the headliner and poke through the material of one hole with your scratch awl tool. From here, use the scratch awl tool as a guide to find the factory mounting holes for the rearview mirror. Once you have found one hole, find the other holes as well. This will ensure the headliner is positioned properly from front to rear along with side to side. DO NOT mount your rearview mirror at this point. Have your second person use the spring clamps to hold the headliner in place.



1. Pull headliner through, make sure you pull headliner through the driver's side over the top of the steering wheel.



2. Locate pre-drilled mounting holes to ensure that headliner is accurately centered from front to rear and left to right utilizing your Awl Scratch Tool.



3. Once centered, use Spring Clamps to hold headliner in place.



Note: Spring Clamps are very important when installing your Headliner. They are the main tool you will utilize to hold your Headliner in place once you are finished centering the Headliner. Spring Clamps will ensure proper alignment of your Headliner Installation.

Step 3 Tuck Headliner into Rear Window Seal

Using your Plastic Trim Tool or small Plastic Puddy Knife, carefully loosen your rear window seal. Proceed to tuck the back end of your headliner into the rubber window seal.



Once Completed headliner should look like Picture referenced below.



Step 4 Installing Header Panel Strip


Next Step is Installing your Header Panel. Begin by placing the panel in position against the front of the Headliner, Locate your pre-drilled mounting holes along the panel, and proceed by screwing in the screws to correct position.



Step 5 Locate Factory Visor Mounting Holes

Using a small sharp tool such as a tack or needle, locate the factory visor mounting holes in the roof of your vehicle. Locate these holes in the front corners of the headliner on the left and right side. You can now begin installing the screws for your visors. Make sure to test fit all three screws.



 **Note:** *It is recommended to use a tack or needle to poke through the material first, this avoids leaving large holes.*

Once the holes have been located, begin to install the visors .

Step 6 Install Mirror Bracket/Visor Retaining Clip

Now it is time to locate the pre-drilled holes found at the top center of your Headliner. Once you locate them, mount the mirror bracket and/or visor retaining clip.



This picture illustrates the installation of the mirror bracket and/or visor retaining clip.



Step 7 Install Sail Panels

To efficiently install your Sail Panels (C-Pillar Covers.) First, ghost fit the sail panel to the frame, Make sure the door clip on the backside of panel clicks into place, then use the Plastic Trim Tool or small Plastic Puddy Knife to tuck the back side of the sail panel into the rear window seal (not under headliner.) Repeat this step for the other side. Use 2 screw per each side to Lock your sail into place (See picture #2 below)



1. Use Awl tool to pull window seal back, and Tuck the edge sail panel into window seal.



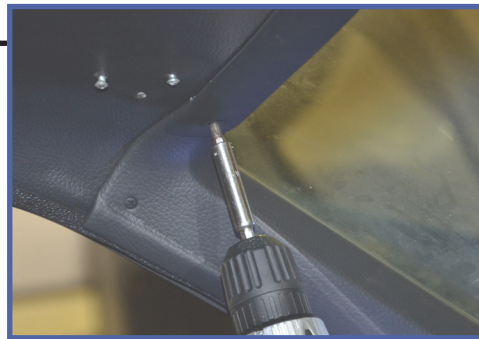
2. Drill screw here to secure your Sail Panel. Repeat step for remaining side.



Caution: When installing your sail panels, please make sure **YOU DO NOT TUCK SAIL PANELS UNDER THE HEADLINER.** This will prevent proper installation.

Step 8 Install A-Pillar Cover

To install your A-Pillar Cover, simply tuck the bottom side of the A-Pillar Cover into the dash. Locate the A-Pillar Cover starting from the dashboard to the Headliner. (**Do Not Tuck Under Headliner.**) Tuck top end of A-Pillar underneath your header panel, then proceed to screw panel and pillar in place



Tuck the Top end of A-Pillar under your header panel, then proceed to screw Panel and Pillar in place.

Step 9 Re-install your Pinch Welt

Once you have re-installed your Package Tray, you can now re-install your Windlace or purchase a new color-matched TMI Windlace. After you complete this, proceed with re-installing your sill plates. This completes the entire Headliner Installation Process.



This illustration depicts the re-installation of the Pinch Welt.



Thank you for choosing TMI, for more information on our product line, please visit our website at , www.tmiproducts.com or feel free to call us at (800)624-7960

Part # 99-6970-000
QP: 09-275 REV: 01