

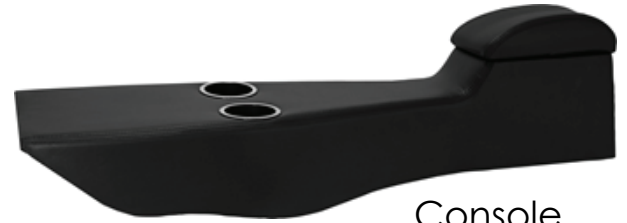
1968-72 Chevelle Full Console Installation Instructions



PARTS:



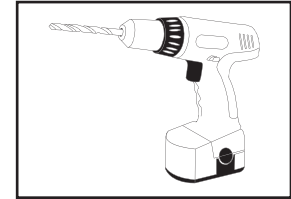
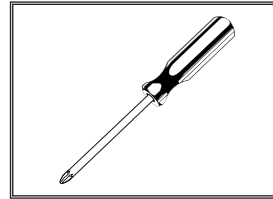
Metal Screws



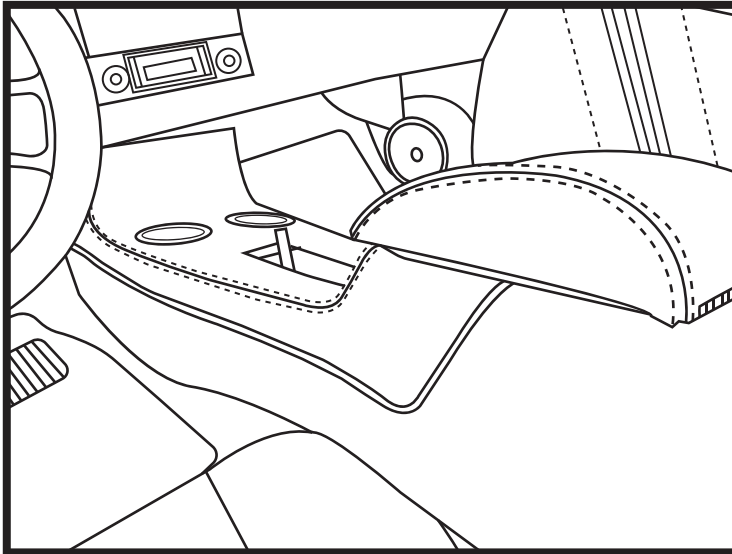
Console

TOOLS NEEDED FOR INSTALL:

1. Phillip's Screwdriver
2. Drill

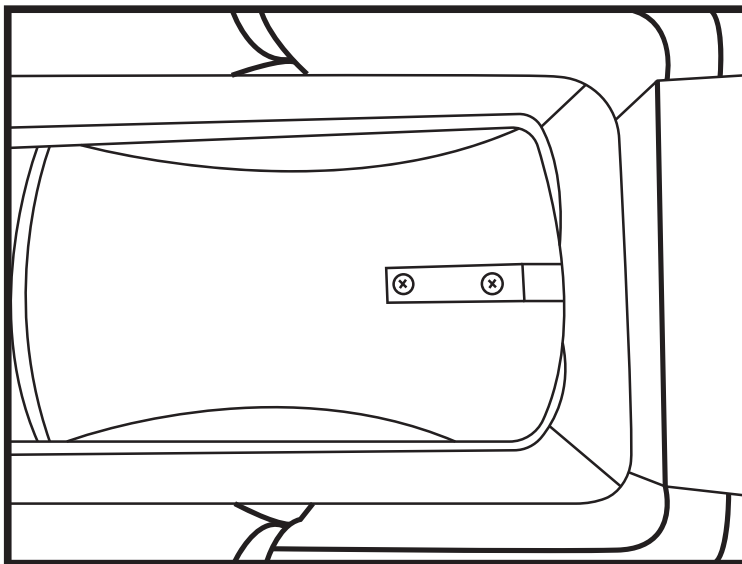


1



STEP 1: Place the console at a 45 degree angle and slide the front of the console under the dash. Lower the rear of the console until the shifter is through the hole.

2



STEP 2: Remove console compartment and using a drill and the provided screws, scew in the L bracket to the transmission tunnel.