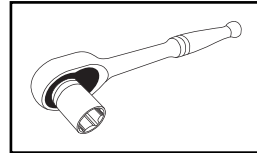


1968-69 El Camino/Chevelle Dash Pad Installation Instructions



TOOLS NEEDED FOR INSTALL:

1. Phillips Screwdriver
2. 10mm Socket Wrench

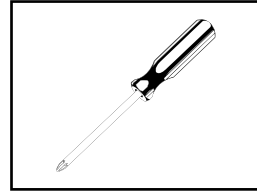


SOCKET WRENCH

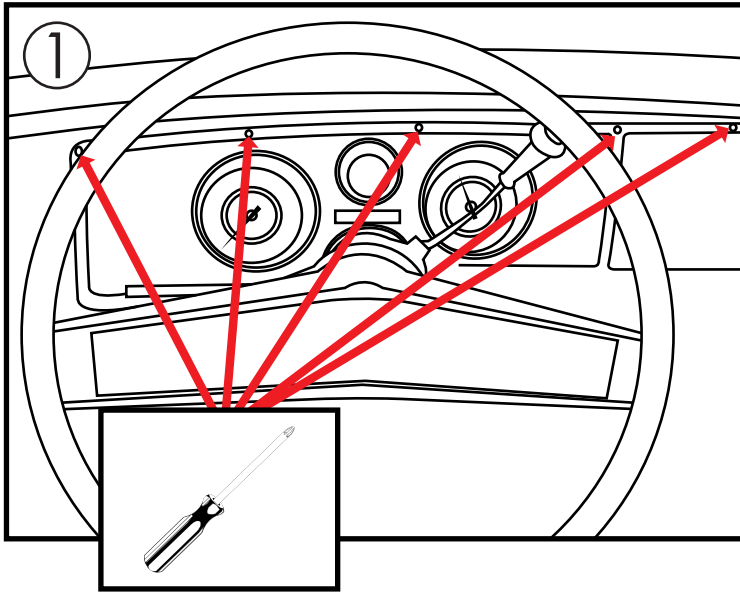
PARTS:



4 - 10mm NUTS
(INCLUDED)

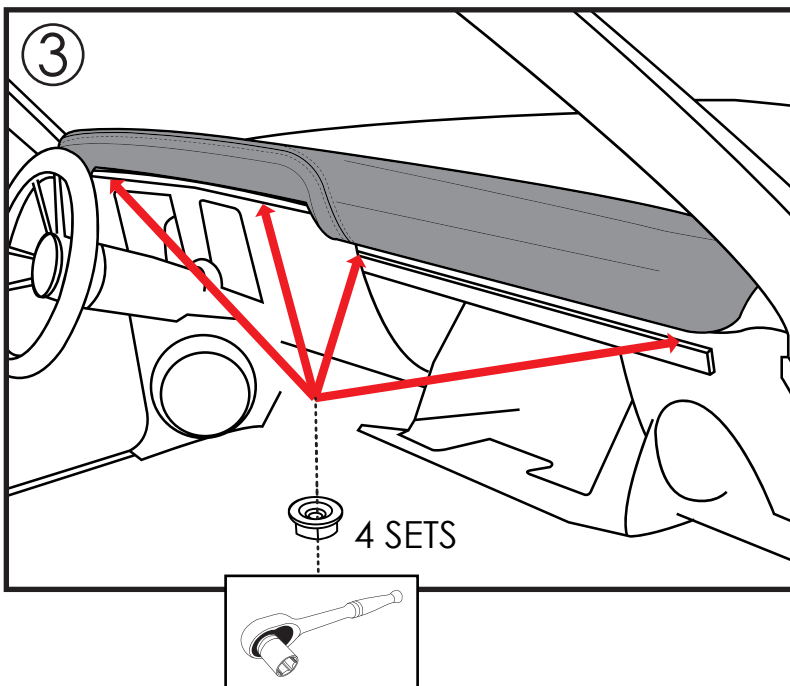
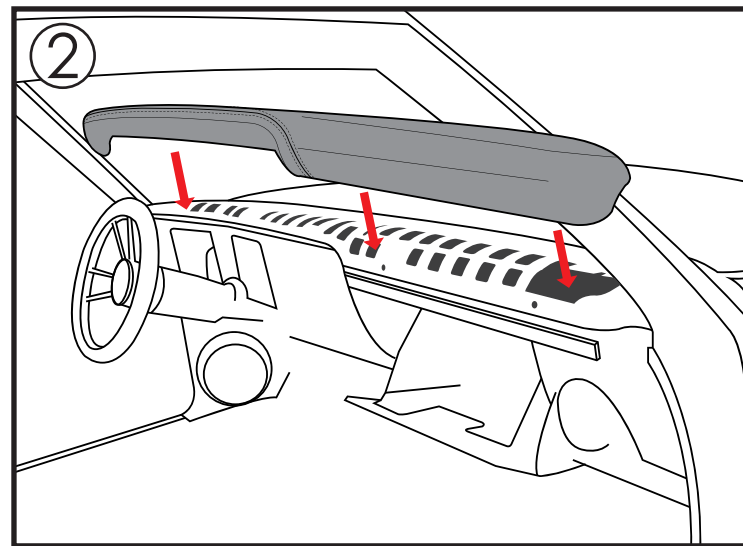


PHILLIPS SCREWDRIVER



Step 1.) Remove the top (5) screws in the instrument bezel.

Step 2.) Fit the TMI dash pad onto dash. There are four studs total. The two outer studs will go into factory holes. The two inner studs will go into slots in the dash.



Step 3.) To fasten the dash pad down, you will open the glove box and install the nut onto the two studs. For the driver's side, you will need to get under the dash and fasten nuts for the two driver's side posts. After the studs are properly fastened, you can screw in the five screws on the instrument cluster.