

Products: N9 X870E & N9 Z890

Firmware Version: v1.1.10

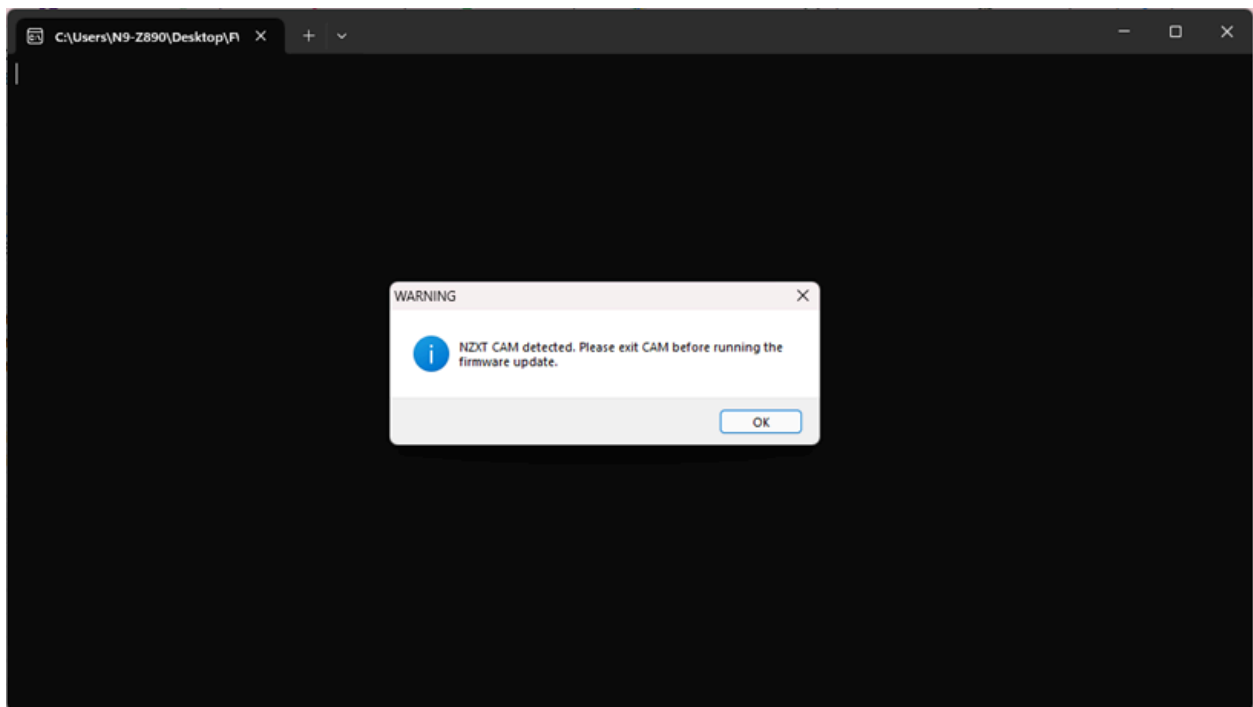
---

#### Release Notes:

1. Optimize RGB lighting effect
2. Set default color to white

#### Instructions:

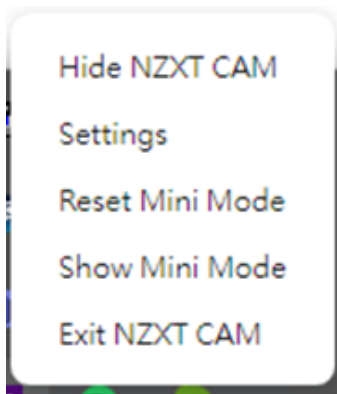
1. Extract the Firmware Lighting Update file.
2. Please exit NZXT CAM when you are ready to execute the file. If the CAM is still running, the installation may fail as below shows.



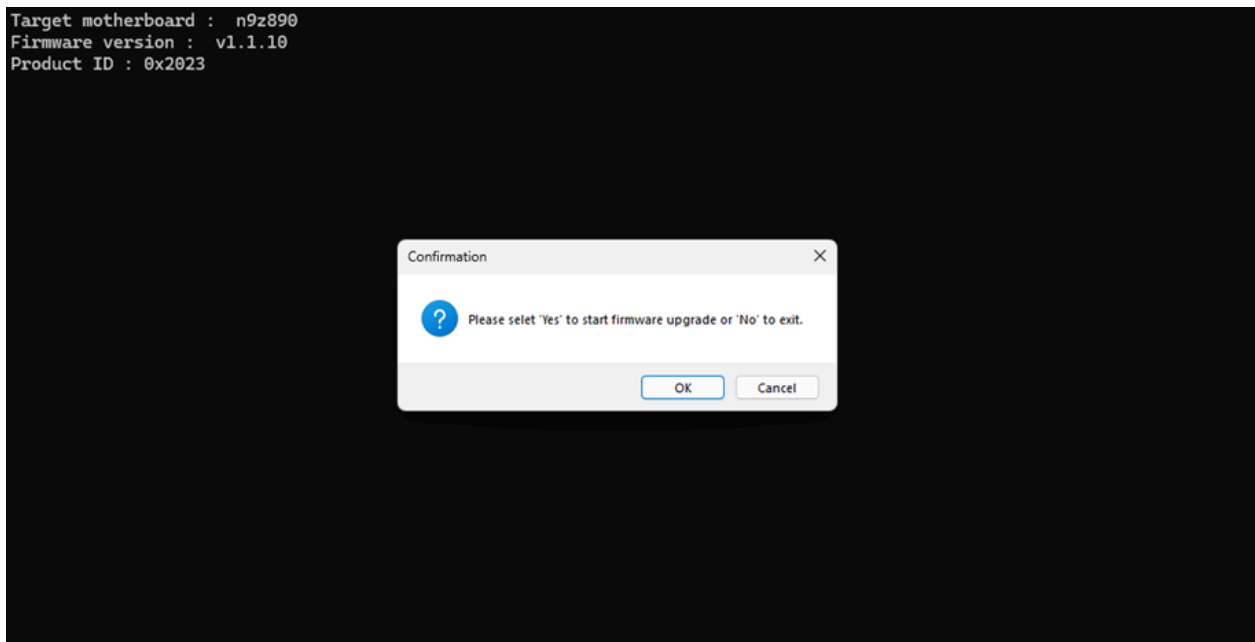
2-1. Find the NZXT CAM icon in the bottom-right corner of your Windows desktop.



2-2. Right-click the mouse to access the context menu, then choose 'Exit NZXT CAM to close the application.

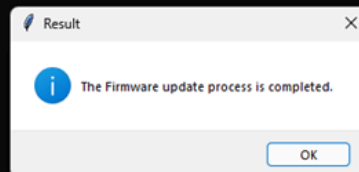


3. Double click the `nzxt_mb_lighting_fw_upgrade.exe` file. Please select OK to confirm the update process.



4. Please select OK to complete the update process.

```
Target motherboard : n9z890  
Firmware version : v1.1.10  
Product ID : 0x2023  
Attempting to jump to reprogrammer...  
Initiating reprogramming...  
Verifying reprogramming...  
Programming successful!
```



If you encounter any issues during installation, please contact NZXT Customer Service for assistance.

Phone: +1-626-385-8272

Support: +800-228-9395

Customer Support Hours: Monday - Friday: 8:00AM - 6:00PM PST