



# Your home has a fast and easy DNA Netti internet access



The internet and cable TV access at Ilmarinen homes is provided by DNA. The basic speed internet access is included in your rent. Activate your internet access effortlessly: call 0800 550 044.

The DNA Sales Service is available on weekdays Mon–Fri 9 am – 8 pm and Saturdays 10am–4pm.

You can also activate your access online at [dna.fi/porinyh#en](https://dna.fi/porinyh#en) or by visiting DNA Kauppa shop.

If you have an internet connection from another operator, terminate it and you will avoid unnecessary extra payments.

## DNA Netti Huoleton subscription includes a secure browsing add-on service

The DNA Netti Huoleton subscription includes a secure browsing add-on service. Turn on the secure browsing add-on service - it blocks harmful websites while you surf in DNA's network with your subscription.

You can see options and prices

[dna.fi/porinyh#en](http://dna.fi/porinyh#en).





## Easy home network for all devices

To use the internet, you need to have a WiFi modem that meets the standards of the broadband technology available for your home. When you search for your address at [dna.fi/porinyh#en](https://dna.fi/porinyh#en), you can see which modem is suitable for your broadband. When you purchase a modem from DNA, your internet access will work as intended and your devices will be connected securely.

---



## DNA cable TV

You have access to all the basic channels of DNA cable TV in your home, without registration. DNA also offers a wide selection of pay-TV channels and streaming services.

**To access DNA TV services, simply do as follows:**

1. You will need a cable compatible (Cable Ready HD or DVB-C) TV or settop box.
  2. Perform a channel search, in other words tune the TV or set-top box. See your device's user guide for instructions.
- 



## WiFi call

WiFi call gives you the chance to make phone calls using a wireless internet connection. It's a great solution to achieve high-quality calls indoors. For example, new low-energy houses and basements are often challenging places. New energy-efficient windows can worsen hearing at home. To use WiFi calls, you need a resident's DNA Netti and a WiFi-modem, as well as a telephone connection and a phone that supports WiFi calls.

---



## DNA Huoleton subscription

The DNA Huoleton subscription includes a secure browsing add-on service. Turn on the secure browsing add-on service – it blocks harmful websites while you surf in DNA's network with your subscription.

The DNA Huoleton subscriptions include unlimited standard priced calls, text and multimedia messages within Finland and the EU/EEA. Calls and messages from Finland abroad are always charged according to a separate price list.

---



## DNA Digiturva online security

With up-to-date DNA Digiturva you make the whole family's internet use safer. At the same time, you can limit children's screen time and make sure that your WiFi connection and data are definitely protected. You can choose the content and scope of security for either one or several devices. [dna.fi/tietoturva](https://dna.fi/tietoturva)

# Instructions for setting up DNA broadband

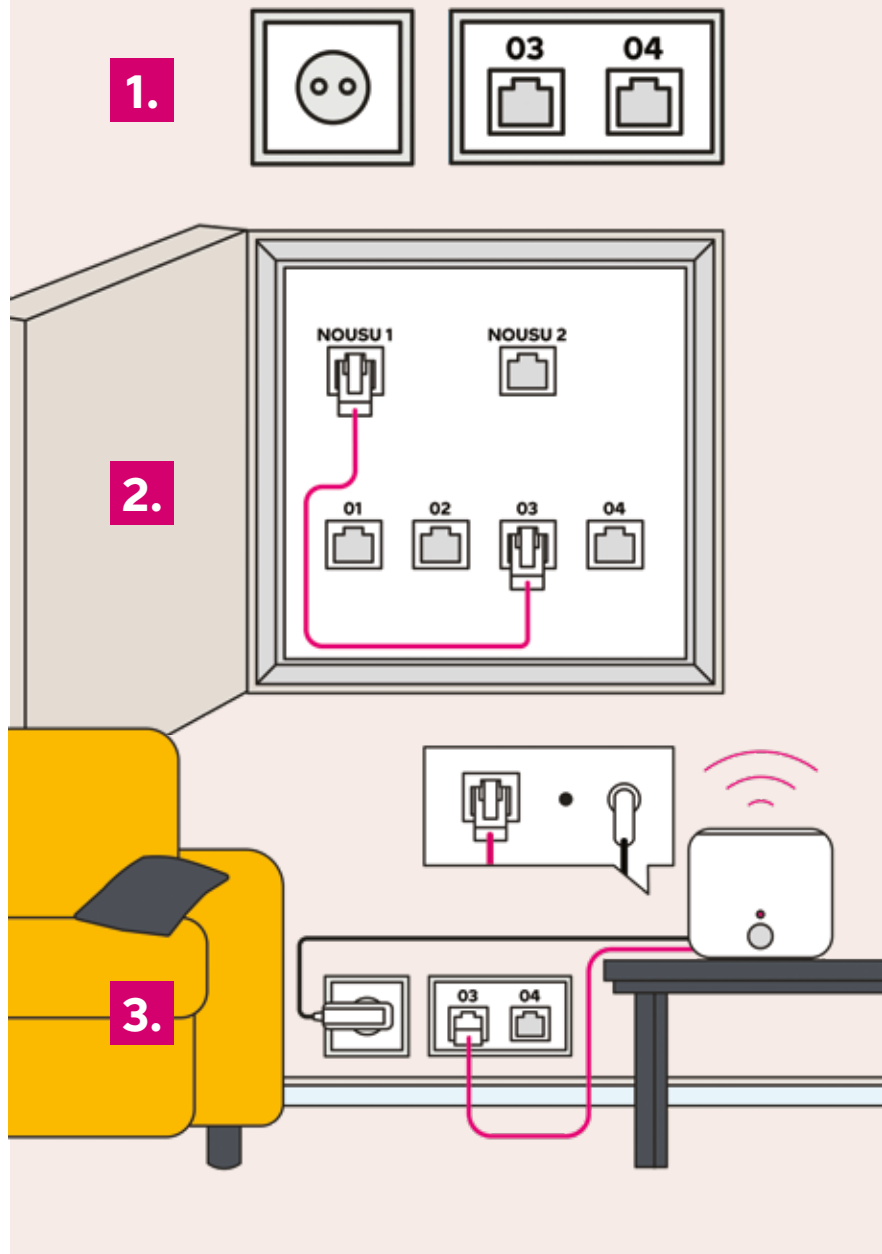
Activate DNA Netti for your home: [dna.fi/porinyh#en](https://dna.fi/porinyh#en)

Once your building/housing company has been connected to DNA's network, you can start using your broadband subscription with the help of these instructions.

If you want to use the internet connection on multiple devices or want to use WiFi at your home, you need a WiFi router (suitable for ethernet technology). To get the best quality connection, we recommend using a DNA WiFi router or modem that is optimized for DNA's network.

If the house uses DNA Netti with ethernet technology, you have a network cabinet from which the internet is distributed to the ethernet outlets, which you may have one or multiple of inside the apartment.

The network cabinet is often located next to the fuse box, which is most often situated close to the entrance in the apartment. In order to start using the internet, you will also need at least two ethernet cables. If you have a router that is from DNA, you will find the cables in the box with the router.



## 1. Choose a place for your WiFi router and take note of the markings on the ethernet outlet

The best place to locate the WiFi modem is the most central place of the room. When you've located the best place, find the ethernet outlet from that room and take note of the label/markings on it.

## 2. Go to the network cabinet and connect the internet to the right ethernet outlet with the ethernet cable

The internet connection is active on one of the outlets in the network cabinet, which is titled either "NOUSU", "DATA" or ATK. Connect one end of the ethernet cable to e.g. NOUSU 1, and the other end of the cable to the outlet that has the same label you took note of earlier (from the ethernet outlet in the room).

## 3. Go back to the room you're setting up your router in, and connect the router to the ethernet outlet that is labeled the same as the outlet in the network cabinet

Connect the other end of the ethernet cable to the ethernet outlet and the other end to an outlet on the WiFi router that is labelled WAN. Plug the power cord of the router into the electrical socket and turn the device on. Wait until the router has connected to the internet.

If your house uses DNA Netti with cable technology, see the instructions in the modem packaging.

More instructions (in Finnish) are found at: [dna.fi/tuki-netti](https://dna.fi/tuki-netti) and [dna.fi/tuki-modeemit](https://dna.fi/tuki-modeemit).

# Contact information

Activate DNA Netti for your home:

[dna.fi/porinyh#en](https://dna.fi/porinyh#en)

## Customer service

tel. 044 144 044

Mon–Fri 8 am – 6 pm

Calling and queueing to the customer service is subject to standard domestic call rate.

## Fault notices 24h

tel. 044 144 044

Nearest **DNA Kauppa** shop:

[dna.fi/dnakaupat](https://dna.fi/dnakaupat)

**If you need any help,**  
call DNA Apuri 044 144 044 or  
chat at [dna.fi/asennusapu](https://dna.fi/asennusapu).

We answer calls on weekdays 8 am – 6 pm.

