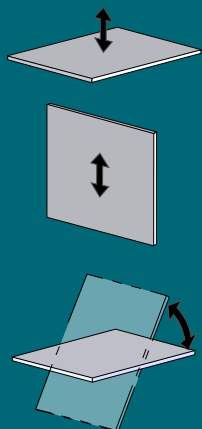
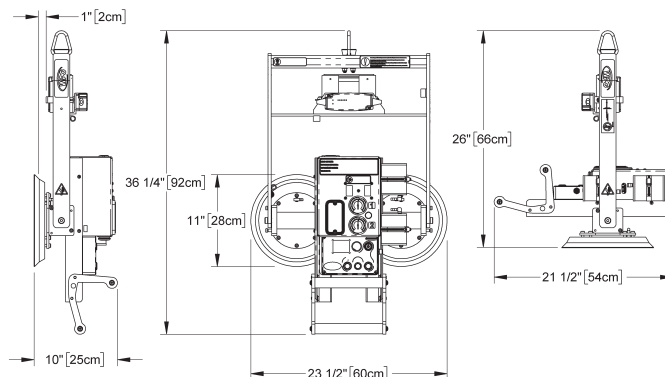


WOOD'S POWR-GRIP® MANUAL TILTER 300



MT210LDC3
300 lbs [135 kg]

With quick attach and release, these lifters enable ergonomic handling of heavy loads by a single operator. Now available with Intelli-Grip Technology®.



Maximum Load Capacity

300 lbs [135 kg]

Intelli-Grip® Technology

Automatic self-testing ensures lifter is ready for use, every lift. Color display provides critically relevant information at a glance. Anticipates threats and alerts operator beforehand with clearly visible and audible warnings. Continuously monitors battery and prevents lifter from attaching to loads if energy is hazardously low. Multiple alarm levels plainly identify the severity of hazards.

Load Movement

Manual tilt, 90° between upright and flat

Standard Operating Power

12 volts DC, 5 amps

Standard Features

Intelli-Grip® Technology
Dual vacuum system
On-board battery and charger
Battery energy gauge
Low vacuum warning light
Low vacuum/power loss warning buzzer with back-up battery
Vacuum gauge
Vacuum line filters
Vacuum reserve tanks
High-flow vacuum pump
Low vacuum strobe light
Green lift light
Blow-off for quick release
Two-action, push button release

Available Options

Flat lift model (FL210LDCS)
Air (venturi) power system (MT210LAIRS)
Alternative vacuum pads (Specifications not as listed above. Please contact us for more information):
11" [28 cm] diameter pad, lipped (G3370)
10" [25 cm] diameter concave pad (G0750)
10" [25 cm] diameter pad with replaceable sealing ring (VPFS10T)
Alternative pad spread and capacities

Attach

4 seconds (approximately)

Release

2 seconds (approximately)

Lifter Weight

55 lbs [25 kg]

Standard Pad Spread

11" x 23½" [28 cm x 60 cm]

Number / Size of Pads

2 / 10" [25 cm] dia. lipped

Design Standards

ASME B30.20 (BTH-1 Design Category "B", Service Class "0")
CE
AS 4991-2004

(See www.WPG.com for more information.)

Based on product information at time of publication. Environmental conditions can affect product performance and longevity; consult the product instructions on WPG.com or contact a Technical Sales Representative for more information.



**THE ORIGINAL
& TRUSTED NAME
IN VACUUM LIFTING
EQUIPMENT**

**800.548.7341
WPG.com**

908 West Main - P.O. Box 368
Laurel, Montana 59044 U.S.A.
406.628.8231 (phone)
406.628.8354 (fax)

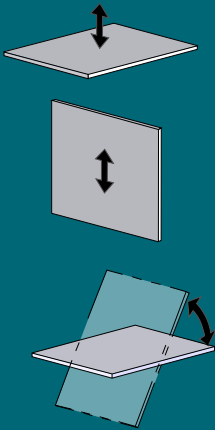
Wood's Powr-Grip products are sold through authorized dealers.



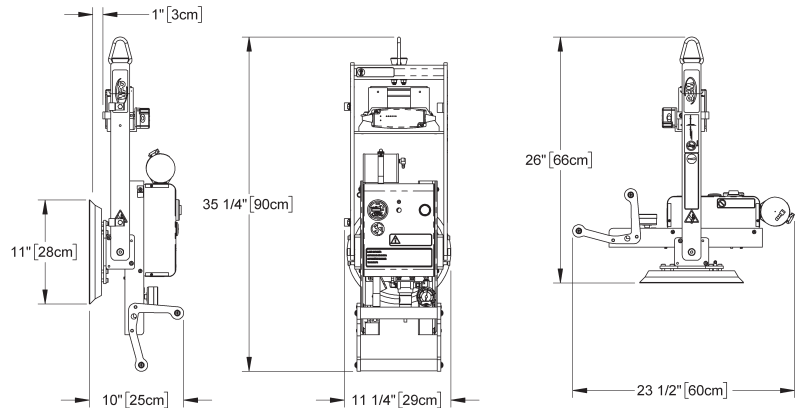
WOOD'S POWR-GRIP[®] MANUAL TILTER 150



MT110LDC
150 lbs [70 kg]



With a single vacuum pad for quick attachment and release, this Powr-Grip[®] vacuum lifter enables ergonomic handling of heavy loads by a single person.



Maximum Load Capacity	150 lbs [70 kg]
Load Movement	Manual tilt, 90° between upright and flat
Standard Operating Power	12 volts DC, 10 amps (Other voltages available)
Alternate Power Systems	AC power system (MT110LACS) Air (venturi) power system (MT110LAIRS) (Specifications may not be as listed above. Please contact us for more information.)
Standard Features	Low vacuum warning light Low vacuum warning buzzer Vacuum gauge Vacuum line filter Vacuum reserve tank On-board battery and charger Battery energy gauge
Available Options	Flat lift model (FL110LDC) 10" [25 cm] diameter concave vacuum pad (G0750) (Specifications not as listed above. Please contact us for more information)
Attach	2 seconds (approximately)
Release	3 seconds (approximately)
Lifter Weight	45 lbs [21 kg]
Standard Pad Spread	11" x 11-1/4" [28 cm x 29 cm]
Number / Size of Pads	1 / 10" [25 cm] dia. lipped
Design Standards	ASME B30.20 (BTH-1 Design Category "B", Service Class "0") CE (See www.WPG.com for more information.)

Based on product information at time of publication. Environmental conditions can affect product performance and longevity; consult the product instructions on WPG.com or contact a Technical Sales Representative for more information.



**THE ORIGINAL
& TRUSTED NAME
IN VACUUM LIFTING
EQUIPMENT**

800.548.7341
WPG.com

908 West Main - P.O. Box 368
Laurel, Montana 59044 U.S.A.
406.628.8231 (phone)
406.628.8354 (fax)

Wood's Powr-Grip products are sold through authorized dealers.