

The Valla 20 TRX pick and carry crane can be supplied in two power formats:

- Valla 20E - powered by zero emission electric batteries
- Valla 20D - has a low emission diesel engine.

As a tracked crane it is ideal for operation across rough terrain or low load bearing surfaces.



2,000kg Max Lifting Capacity



CPCS - A66 Compact Crane (B)



Technical specification (basic machine)

Max Lifting Capacity	2,000kg
Max Working Height	4.0m
Max Working Radius	2.6m
Capacity @ Max Height	800kg
Capacity @ Max Radius	400kg
Power Source	Batteries / Diesel
Height	1760mm
Length	2400mm
Width	950mm
Total Machine Weight	2,100kg (E)/1,900kg (D)

Optional Accessories

- Non-marking tracks
- Hydraulic winch & hook block
- Fly jib
- Custom paint colour
- Radio remote control



Hydraulic winch & hook block (optional)

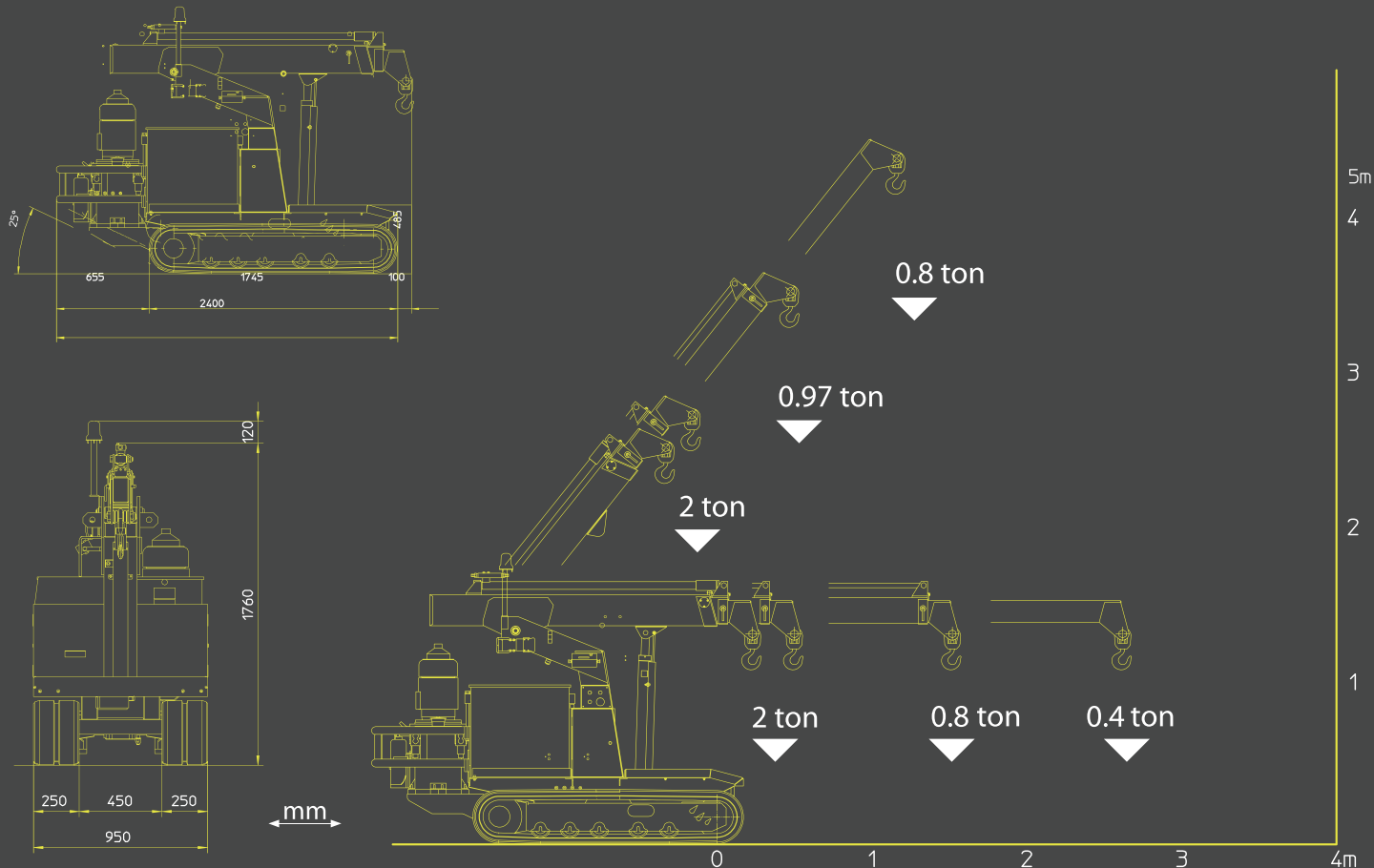
Product specifications are subject to change without prior notice or obligation. The photographs and/or drawings in this document are for illustrative purposes only



Tracks enable this crane be manoeuvred across busy, congested sites or on landscaped ground areas.

Dimensions

Working envelope (basic machine)



Product specifications are subject to change without prior notice or obligation. The photographs and/or drawings in this document are for illustrative purposes only

info@valla-cranes.co.uk