

**A Mini Crane Hire
Company Limited**

WWW.aminicranehire.co.uk
Telephone 0844 770 6774

**Wienold
MINI FLOOR CRANE**

New!

Wienold LIFTE
est. since 1987



MFC 750
Mini Floor Crane

Wienold

CE

Wienold Mini Floor Crane MFC 750 Model Description

MFC 750/Ks



MINI FLOOR CRANE MFC 750

The **Mini Floor Crane** is our latest innovation. It is designed to achieve the greatest flexibility for a wide variety of applications. The Mini Floor Crane will therefore adapt perfectly to your work environment and required applications.

Like most Wienold lifts, the MFC is based on a **multi-functional chassis**. By simply configuring a few components, two different combinations are easily set up.

Wherever you have space restrictions, the Shorty **MFC 750/Ks** is the best suited to the task without reducing capacity. The MFC 750/Ks has the smallest footprint when set up for work, at only 0.65 x 1.2 m, this will be sufficient to achieve a maximum capacity of 738 kg at 3.05 m height.

The **MFC 750 / K** is a classic counterweight unit. Two long outriggers are backwards mounted and are fitted with two counterweight boxes containing 14 counterweights each. This combination allows the lifting of 900 kg up to a maximum height of 3.05 m.

By using this configuration, the MFC can be positioned frontal at walls and balustrades to enable loads to be raised or lowered over these and other obstacles.

Options: To lift loads from below floor level all the way up to 3.05 m height, it is recommended to use a **hook winch**. The winch is equipped with a remote control, with which the load can be positioned precisely. Further attachments are available, for example **dual circuit vacuum lifters** for lifting heavy glass panels or other similar (gas tight materials) typically used in facades.

For additional stability, **lateral outriggers** are available for each model.

To minimise floor loadings and optimise manoeuvrability for outdoor use, the MFC can be retro-fitted with **all-terrain tyres**.

The **MFC boom** can be extended up to 1.28 m in 8x 120 mm increments, and is fitted with a crane hook. The use of a **double-acting lifting cylinder** allows the load to be easily raised to the highest point.

Furthermore, the **swivel castors** of the MFC are provided with brakes and 90° swivel locks as standard.

Due to its slim design, the MFC fits in any standard lift. If necessary the Lift is also simple to disassemble, requiring only a few parts to be handled. Also **carry handles** on components ease the handling through for example stairways.

MFC 750/K

with additional:
- all-terrain tyres
- lateral outriggers
- electrical hook winch
(800 kg capacity max.)



MFC 750/K

with additional:
- all-terrain tyres
- Vacuum lifter DS-Z
(900 kg capacity max.)



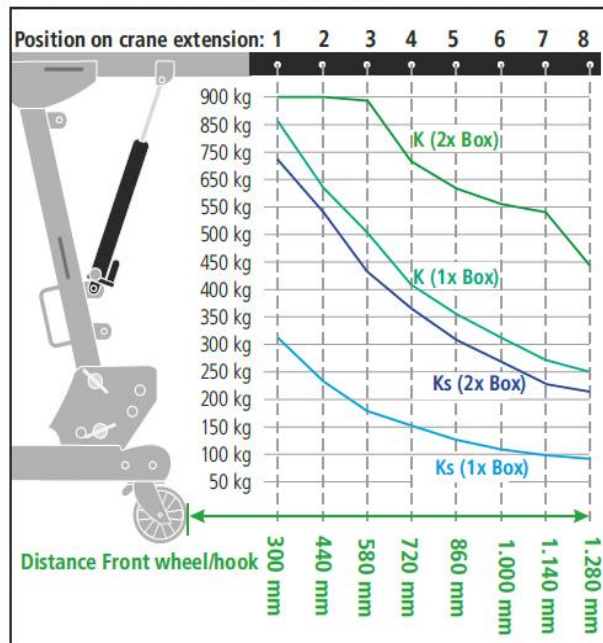


MFC 750/K
with additional:
- All-terrain tyres
- Hook winch CWS
(800 kg capacity max.)



Basic Equipment:
- Carry handles
- Hydraulic cylinder
- Counterweights

LOAD CAPACITIES MFC 750					
Load Position ↓	Distance Front wheel ← Load	Ks		K	
		1X Box (14x 16kg)	2X Box (28x 16kg)	1X Box (14x 16kg)	2X Box (28x 16kg)
1	300 mm	312 kg	738 kg	858 kg	900 kg
2	440 mm	231 kg	547 kg	635 kg	900 kg
3	580 mm	184 kg	434 kg	505 kg	894 kg
4	720 mm	152 kg	360 kg	418 kg	742 kg
5	860 mm	130 kg	308 kg	357 kg	634 kg
6	1.000 mm	113 kg	268 kg	312 kg	553 kg
7	1.140 mm	101 kg	238 kg	277 kg	491 kg
8	1.280 mm	90 kg	214 kg	249 kg	441 kg



MFC 750/Ks

Mini Floor Crane Technical Data	MFC/K	MFC/Ks
Lifting height (below the hook):	3.05 m	3.05 m
Transport position - height:	1.00-1.92 m	1.00-1.92 m
- length:	1.20 m	1.20 m
- width ² :	0.65 m	0.65 m
Working position - height:	1.92 m	1.92 m
- length ¹ :	1.80 m	1.20 m
- width ² :	0.65 m	0.65 m
Loading height min.:	0.85 m	0.85 m
Boom extension each position:	0.12 m	0.12 m
Boom length max.:	1.28 m	1.28 m
Capacity max.:	900 kg	738 kg
Weight of chassis incl. boom ³ :	160 kg	134 kg
Weight of counterweights (28x 16kgs) incl. 2 Boxes:	490 kg	490 kg

¹ Footprint without steering bracket. ² With all-terrain tyres = 0.78 m ³additional weight = 28 kg.