



MINI CRANE
HIRE



Specialists in
Glass
Lifting

CRANESGLAZINGROBOTSCRANESVACUUMLIFTERS
GROBOTSCRANESVACUUMLIFTERSMINICRANESGL
CRANESGLAZINGROBOTSCRANESVACUUMLIFTERS
GROBOTSCRANESVACUUMLIFTERSMINICRANESGL
CRANESGLAZINGROBOTSCRANESVACUUMLIFTERS
GROBOTSCRANESVACUUMLIFTERSMINICRANESGL

AMCH

www.amchire.com

A Mini Crane Hire Company Limited

“AMCH” A Mini Crane Hire Company Limited was incorporated in July 2008 and offer National Coverage.

We have established an experienced, highly driven, dedicated team with a team focus on Customer Service, Engineering/Retail know-how, Safety and Training. We also offer bespoke Project Management.

Contract Lifting

“Contract Lifts” It is our aim to be more than just a rental company. We use our experience to offer our unique lifting solutions. Our design service means you can pass on responsibility of planning and lift to us. Our experts will be happy to advise on the best-fit solution for all types of work, so please contact us as early as possible to discuss your needs ensuring best practice for both short and long term projects.

Our operatives are CPCS qualified: Appointed Person, Lifting Supervisor, Slinger Signaller and Compact Crane Operative.

Hire We offer a full range of equipment for Hire:

Innovative range of Mini Spider Cranes

Glass Vacuum Lifters - supported by a comprehensive range of Valla, Mini and Spider Cranes for lifting, carrying and placing glass panels

Cranes - Truck Mounted Crane, City Cranes, Pick and Carry Floor Cranes

Glazing Robots - Complete your Glass Installation project efficiently and safely

Accessories

Glass Transportation

Minifor Winch, Stillages, Man Chain Winch

Hand Vacuum, Glass Suction Lifters

Environment

Subbusta - Exhaust particulate filter system - 3 sizes available on request.

Health and Safety legislation requires that diesel engine exhaust emissions are controlled whenever they could create a health hazard. This is generally when diesel engines are run within an enclosed environment and therefore ventilation is restricted or alternatively our cranes can be run off a 3 phase supply eliminating emissions.

Training

Familiarisation Training can be provided at our training facilities or on-site for Vacuum Lifters, Floor Cranes and Smart lifts.

CPCS/NPORS Training can also be arranged for A66 Compact Crane, A62 Crane Supervisor, A40 Slinger Signaller and A61 Appointed Person - Courses vary in duration, based on the experience of the operative.

Training we believe is not just about gaining a card, it is about training to the correct standard. Lifting Operations and Construction Sites are dangerous and we would like to ensure everyone arrives home safe at the end of the working day.

Service and Testing

We provide Service and Testing for Mini Cranes, Vacuum Lifters and other lifting equipment as per manufacturer's guidelines, to meet with lifting equipment regulations 1998 (LOLER), BS 7121 and (PUWER).



Contract Lifting

All our contract lifts are carried out in line with the British Standard Code of Practice for safe use of cranes BS-7121 & BS-EN13000. We provide fully trained and highly experienced operatives to carry out all Contract Lifts and take pride in the Risk Assessments and Method Statements/ Lift plans that we produce.

A number of our operatives hold more than one accreditation, meaning that we always aim to offer the customer the most cost effective solution to a project for standard lifting operations. Health and Safety is a priority to AMCH and due to this we ensure all operatives are trained to the highest of standards.

- Full Contract Lifting Facility
- Any size of crane
- Appointed Person
- Lift Plans
- Method statement / Risk assesment
- Lift Supervisor
- Lifting Operation Management
- Full compliance with LOLER
- Fully trained personel



Maeda MC285CB

Delivering the capacity, reliability and flexibility required for the most demanding operations, the new Maeda MC285CB-3 builds on the successful legacy of the MC285C-3 model. Equipped with a strong lithium-ion battery it provides zero emissions and still equals its predecessor in both operation speeds and lifting capacity.



Features at a glance...

- 2.82t Max Capacity
- 8.7m Max Lifting Height
- Lithium-ion Battery
- Minimal Charging Time
- Continuous Operation While Charging
- White Rubber Tracks as Standard
- Multi Outrigger Positions
- Crane/Outrigger Interlock System
- Low Noise & Light Weight



Save energy with the two ECO modes.

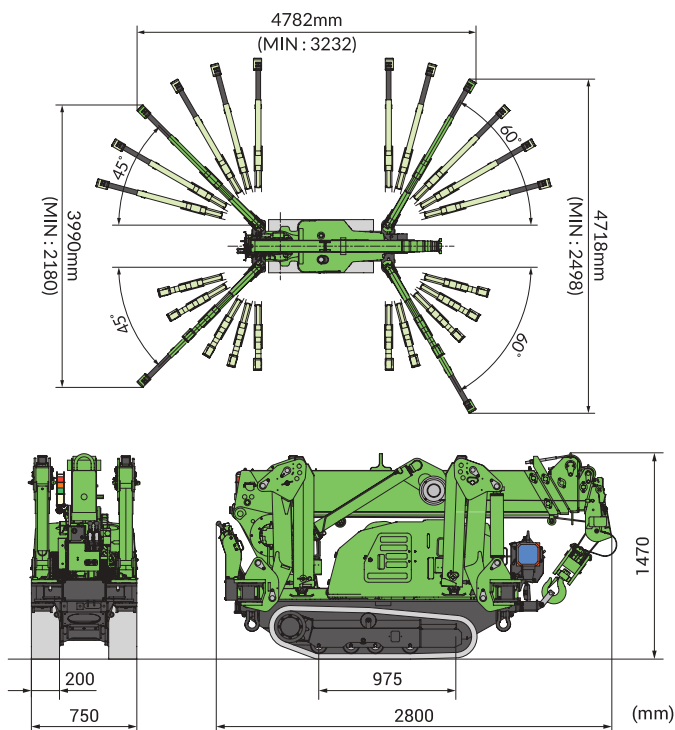
More Images...



Specifications

Capacity	Maximum	2.82t x 1.4m
Working Radius	Maximum	8.205m x 150kg
Lifting Height	Maximum	8.7m x 550kg
Dimensions	MC285CB-3	2800mm x 750mm x 1470mm
Weight	MC285CB-3	1995kg
	Hook block weight	30kg
Hook Speed	Maximum	9.3m / min. (4 falls, 4th layer)
Single Line Speed	Maximum	37.2m / min. (4th layer)
Hoist Rope	Type	IWRC 6 x Fi (29) 0/0, Ø 7mm x 48m
Telescopic System	Boom Length	2.535m - 8.575m
	Telescoping Speed	6.04m / 22 sec.
	Boom Type	Fully automatic 5 section pentagonal telescopic boom
Boom Hoist System	Hoist angle / speed	0° - 80° / 14 sec.
Slew System	Slew angle / speed	360° continuous / 0.88 rpm
Outrigger System	Type	1st stage with flexible stay damper, 2nd stage manual pullout, hydraulic cylinder direct acting type (Length) 4782mm x (Front) 4718mm x (Rear) 3990mm
	Maximum outriggers	
Traction System	Drive	Hydraulic motor driven, stepless speed changer
	Travel speed	0 - 2.0km/h
	Gradability	20°
	Ground length x width	975mm x 200mm
Battery System	Ground pressure	0.512kgf / cm ²
	Model	Toshiba
	Type	Lithium Titanate Battery
	5-hour rate capacity	DC55V - 135Ah
Electric Motor	Input Voltage/Current	Single phase AC200V / 16A, AC100V / 15A
	Charging	During operation available
Charging Time	Rated output	Variable 7.5kW AC30V at 2500min ⁻¹
Charging Time	(with AC-200V)	80%: 2h 20min / 100%: 3h 30min
	(with AC-100V)	80%: 5h 20min / 100%: 7h 00min
Continuous Operating Time	Travelling (Hi speed)	2h 15min
	Crane	8h 30min
Safe load indicator	Made specifically for Maeda Mini Cranes with a fully programmable working envelope	
Standard Equipment	Overwind protection, Hour meter, Wireless radio remote control, White rubber tracks, Hydraulic safety valves, Tilt alarm, EMO switch, Programmable Moment limiter, Working limit settings, Working status lamp, Load indicator, Data logger, Crane and outrigger interlock system, 4-fall / 2-fall hook block.	
Optional Equipment	Black Rubber Tracks	Single Fall Hook
		850kg Searcher Hook

Dimensions



Total rated load Outriggers at Maximum position

2.535m/4.075m boom		5.575m boom		7.075m boom		8.575m boom	
Working radius (m)	Total rated load (kg)	Working radius (m)	Total rated load (kg)	Working radius (m)	Total rated load (kg)	Working radius (m)	Total rated load (kg)
<1.4	2820	< 3.0	1220	< 3.6	820	< 4.0	550
1.5	2520	3.5	970	4.0	740	4.5	400
2.0	1920	4.0	780	4.5	580	5.0	340
2.5	1570	4.5	630	5.0	480	5.5	300
3.0	1220	5.0	530	5.5	430	6.0	270
3.5	970	5.205	530	6.0	380	6.5	230
3.705	920			6.5	350	7.0	200
				6.705	330	7.5	180
						8.0	150
						8.205	150

Total rated load Outriggers at any other position

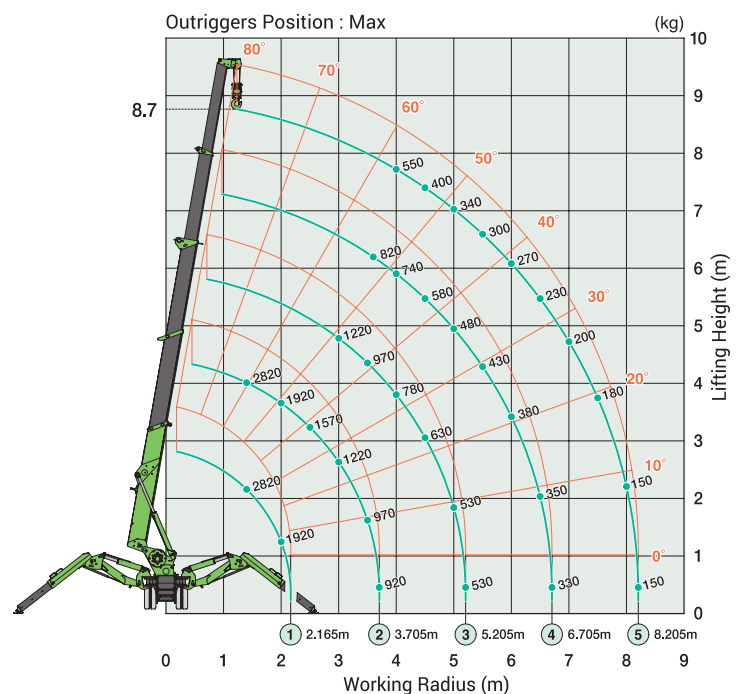
2.535m/4.075m boom		5.575m boom		7.075m boom		8.575m boom	
Working radius (m)	Total rated load (kg)	Working radius (m)	Total rated load (kg)	Working radius (m)	Total rated load (kg)	Working radius (m)	Total rated load (kg)
<1.5	172	< 3.0	510	< 3.6	400	< 4.0	330
2.0	1070	3.5	410	4.0	330	4.5	280
2.5	630	4.0	330	4.5	280	5.0	230
3.0	520	4.5	280	5.0	230	5.5	180
3.5	390	5.0	200	5.5	180	6.0	160
3.705	350	5.205	200	6.0	160	6.5	130
				6.5	130	7.0	100
				6.705	120	7.5	80
						8.0	70
						8.205	60

When using two fall or single fall hooks, use the four fall Total Rated Load Charts but with a maximum load of: Two Fall 1410kg, Single Fall 710kg.

Maximum Reach Below Ground Level

Four Fall	Two Fall	Single Fall
10.1m	20.2m	40.4m

Working Range Diagram



This working range chart shows total rated load including boom deflection.

Maeda MC285

The MC285 boxes way above its weight with a massive 2.82 ton lifting capacity while measuring just 750mm wide when stowed. Its slim body is able to fit through most doorways allowing access to areas previously inaccessible to standard cranes. The MC285 has proven to be one of the most popular models of mini crane and is used in many varied applications.

Features at a glance...

- 2.82 Ton Max Capacity
- 8.7m Max Working Height
- Slim Body Width (750mm)
- Low Ground Pressure
- Manoeuvrability & Stability
- Programmable Moment Limiter
- Hydrostatic Transmission
- Tilt Sensor / Alarm
- Rubber Tracks
- Hydraulic Disc Brake
- Remote Control

More Images...



Glazing



Restricted Access



Railway Maintenance



General Lifting

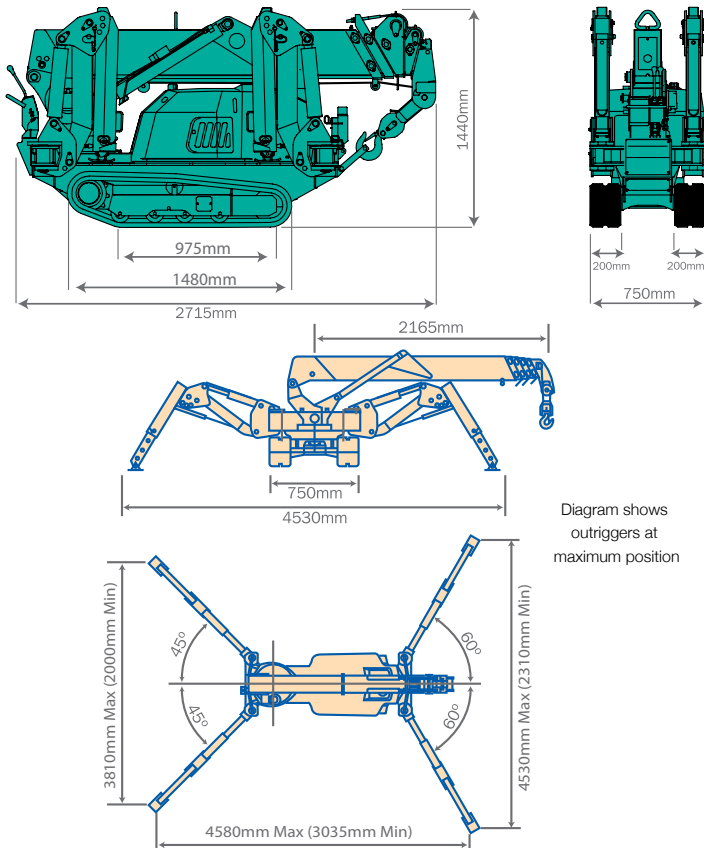


Maintenance Work

Specifications

Capacity	Maximum	2.82t x 1.4m
Working Radius	Maximum	8.205m x 150kg
Lifting Height	Maximum	8.7m x 550kg
Dimensions	MC285 CRM	2715mm x 750mm x 1440mm
	MC285 CRME	3285mm x 750mm x 1440mm
Weight	MC285 CRM	1770kg
	MC285 CRME	1950kg
Hook Speed	Maximum	8m / min. (4 falls, 3rd layer)
Single Line Speed	Maximum	32m / min. (3rd layer)
Hoist Rope	Type	IWRC 6 x Fi (29) Ø 7mm x 48m
Telescopic System	Boom Length	2.535m - 8.575m
	Telescoping Speed	6.04m / 22 sec.
Boom Hoist System	Boom Type	Fully automatic 5 section pentagonal telescopic boom
	Hoist angle / speed	0° - 80° / 14 sec.
Slew System	Slew angle / speed	360° continuous / 1.0 rpm
Outrigger System	Type	4 Multi position box type. Hydraulic cylinders with lock valves.
	Maximum extended dimensions	(Length) 4580mm x (Front) 4530mm x (Rear) 3810mm
Traction System	Drive	Hydrostatic type, stepless forward and reverse
	Travel speed	0 - 2.2km/h
	Gradability	20°
	Ground length x width	975mm x 200mm (Track dimensions)
Engine	Ground pressure	0.45 kgf / cm2 (0.50 kgf / cm2 CRME)
	Model	Yanmar 2TNE68-MB
Electric Motor (Optional)	Type	2 Cylinder water cooled diesel
	Rated output	6.57kw / 2600 rpm
	Starting method	Electric
	Fuel tank capacity	Diesel / 12L
Standard Equipment	Type	Fully enclosed fan cooled motor
	Size	5.5 Kw 4P 380V
Optional Equipment	Working light, hour-meter, 4-fall hook block, black rubber tracks, moment limiter, hydraulic safety valves, level, wire rope latch, machine body inclination alarm, EMO switch, working status lamp, overwind protection and cable remote control.	

Dimensions



Total rated load Outriggers at Maximum position

2.53m/4.075m boom		5.575m boom		7.075m boom		8.575m boom	
Working radius (m)	Total rated load (kg)	Working radius (m)	Total rated load (kg)	Working radius (m)	Total rated load (kg)	Working radius (m)	Total rated load (kg)
<1.4	2820	<3.0	1220	<3.6	820	<4.0	550
1.5	2520	3.5	970	4.0	740	4.5	400
2.0	1920	4.0	780	4.5	580	5.0	340
2.5	1570	4.5	630	5.0	480	5.5	300
3.0	1220	5.0	530	5.5	430	6.0	270
3.5	970	5.205	530	6.0	380	6.5	230
3.705	920			6.5	350	7.0	200
				6.705	330	7.5	180
						8.0	150
						8.205	150

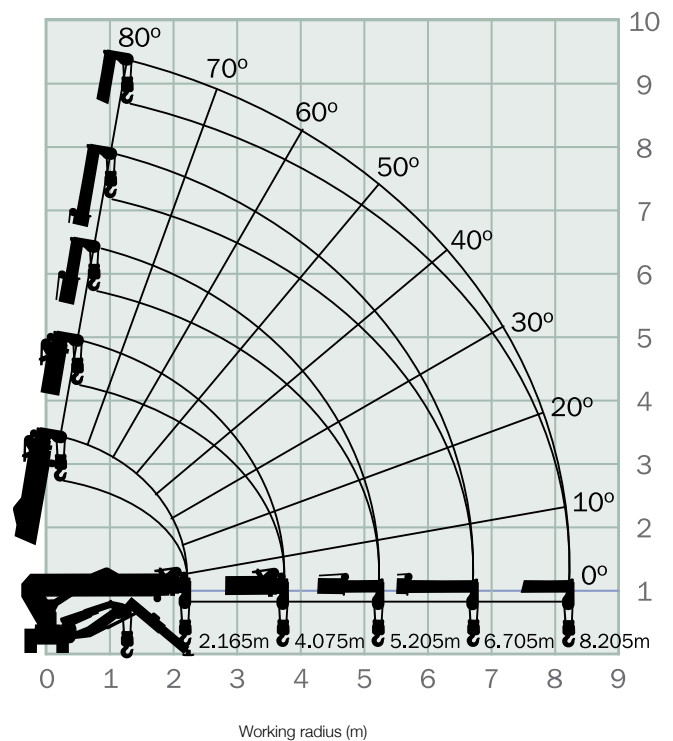
Total rated load Outriggers at any other position

2.53m/4.075m boom		5.575m boom		7.075m boom		8.575m boom	
Working radius (m)	Total rated load (kg)	Working radius (m)	Total rated load (kg)	Working radius (m)	Total rated load (kg)	Working radius (m)	Total rated load (kg)
<1.5	1720	<3.0	510	<3.6	400	<4.0	330
2.0	1070	3.5	410	4.0	330	4.5	280
2.5	630	4.0	330	4.5	280	5.0	230
3.0	520	4.5	280	5.0	230	5.5	180
3.5	430	5.0	230	5.5	180	6.0	160
3.705	350	5.205	200	6.0	160	6.5	150
				6.5	150	7.0	100
				6.705	140	7.5	80
						8.0	70
						8.205	60

Maximum Reach Below Ground Level

Four Fall	Two Fall	Single Fall
10.10m	20.20m	40.40m

Working Range Diagram



The Working Range Chart does not take into account boom deflection under load.

Maeda MC305-2

The MC305-2 is the first of the "ride on" Maeda mini cranes and is extremely powerful for its small stature. Up to 2.98 tonnes of lifting power from a machine only 1280mm wide.



Features at a glance...

- 2.98 Ton Max Capacity
- 12.52m Max Working Height
- Energy Saving System
- Sheaves Protected Inside Boom
- Variable (Hi/Lo) Travel Speeds
- Programmable Moment Limiter
- Hydrostatic Transmission
- Centralised Controls
- 4 Fall / 2 Fall Hook Block
- Automatic Hook Stowage System
- Tilt Sensor / Alarm
- Powerful Two Speed Winch
- Hydraulic Disc Brake
- Remote Control
- Outrigger Interlock System

More Images...



Glazing



Uneven Ground



Installations



Steel Erecting



General Lifting

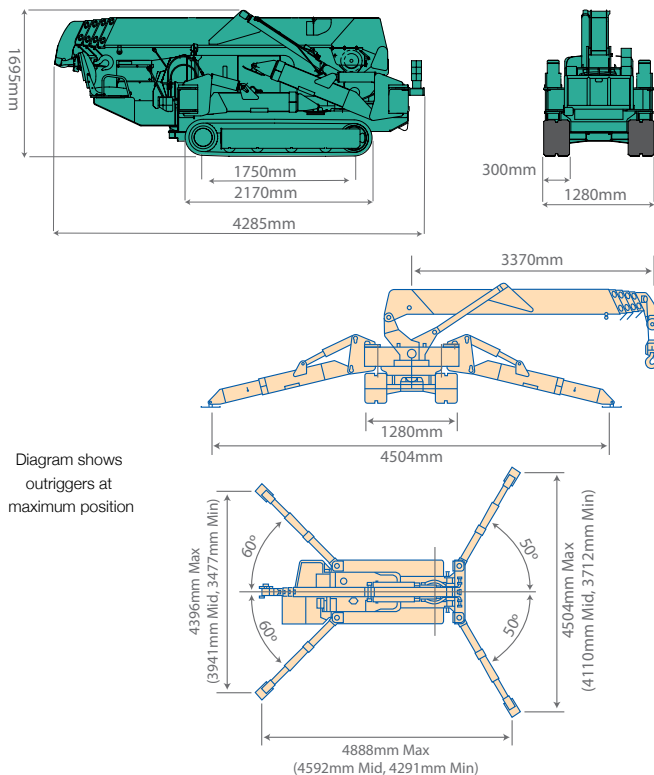
Specifications

Capacity	Maximum	2.98t x 2.5m
Working Radius	Maximum	12.16m x 260kg
Lifting Height	Maximum	12.52 x 790kg
Dimensions	MC305 CRM(E)	4285mm x 1280mm x 1695mm
	MC305 CRM	3900kg
	MC305 CRME	4040kg
Hook Speed	Maximum	13.5 / min. (4 falls, 4th layer)
Single Line Speed	Maximum	54m / min. (4th layer)
Hoist Rope	Type	IWRC 6 x WS (26) Ø 8mm x 73m
Telescopic System	Boom Length	3.695m - 12.485m
	Telescoping Speed	8.79m / 38 sec 26 sec.
	Boom Type	Fully automatic 5 section pentagonal telescopic boom
Boom Hoist System	Hoist angle / speed	0° - 80° / 21 sec. (14.5 sec.)
Slew System	Slew angle / speed	360° continuous / 2.4 rpm (1.7 rpm)
Outrigger System	Type	Extension and set-up by hydraulic cylinders.
	Maximum extended dimensions	(Length) 4888mm x (Front) 4504mm x (Rear) 4396mm
Traction System	Drive	Hydraulic motor driven, stepless speed changer
	Travel speed	0 - 2.8km/h (1.3km/h)
	Gradability	23°
	Ground length x width	1750mm x 300mm (Track dimensions)
Engine	Ground pressure	0.37 kgf / cm2 (0.38 kgf / cm2 CRME)
	Model	Yanmar 3TNV76
	Type	3 Cylinder water cooled diesel
	Rated output	15.2kw / 2500 rpm
	Starting method	Electric
	Fuel tank capacity	Diesel / 40L
Electric Motor (Optional)	Type	Fully enclosed fan cooled motor
	Size	5.5 Kw 4P 380V
Standard Equipment	Overwind protection, hydraulic safety valves, wire rope latch level, machine body inclination alarm, EMO switch, travel lock lever, outrigger interlock device, moment limiter, working status lamp, hour-meter, 4-fall / 2-fall hook block, black rubber tracks and cable remote control.	
Optional Equipment	Radio remote control, white rubber tracks, single fall hook, searcher hook.	

Maximum Reach Below Ground Level

Four Fall	Two Fall	Single Fall
16.09m	32.18m	64.36m

Dimensions



Total rated load Outriggers at Maximum position

3.7m/5.945m boom		8.145m boom		10.315m boom		12.485m boom	
Working radius (m)	Total rated load (kg)	Working radius (m)	Total rated load (kg)	Working radius (m)	Total rated load (kg)	Working radius (m)	Total rated load (kg)
<2.5	2980	2.7	2270	4	1080	<4.5	790
3	2390	3	2120	4.5	985	5	660
3.5	1990	3.5	1680	5	880	6	520
4	1710	4	1440	6	770	7	430
4.5	1490	4.5	1260	7	670	8	380
5	1340	5	1110	8	570	9	340
5.62	1160	5.5	990	9	500	10	310
		6	880	9.99	435	11	280
		7	730			12.16	260
		7.82	630				

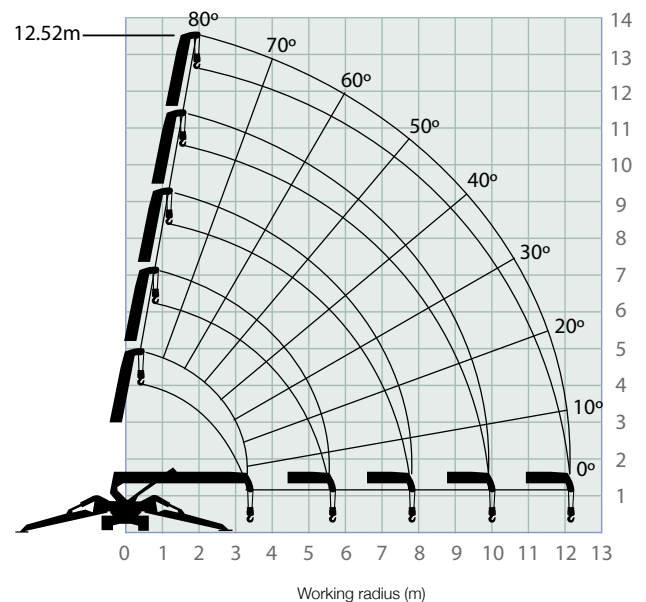
Total rated load Outriggers at any other position

3.7m/5.945m boom		8.145m boom		10.315m boom		12.485m boom	
Working radius (m)	Total rated load (kg)	Working radius (m)	Total rated load (kg)	Working radius (m)	Total rated load (kg)	Working radius (m)	Total rated load (kg)
<2.5	2980	2.7	2270	4	1060	<4.5	780
3	2360	3	2090	4.5	950	5	650
3.5	1960	3.5	1680	5	860	6	500
4	1680	4	1420	6	750	7	410
4.5	1380	4.5	1240	7	630	8	360
5	1140	5	1070	8	490	9	320
5.62	950	5.5	950	9	410	10	290
		6	800	9.99	350	11	260
		7	610			12.16	250
		7.82	520				

Total rated load Outriggers at Minimum position

3.7m/5.945m boom		8.145m boom		10.315m boom		12.485m boom	
Working radius (m)	Total rated load (kg)	Working radius (m)	Total rated load (kg)	Working radius (m)	Total rated load (kg)	Working radius (m)	Total rated load (kg)
<2.5	2980	2.7	2270	4	1060	<4.5	780
3	2350	3	2090	4.5	950	5	650
3.5	1800	3.5	1680	5	860	6	500
4	1430	4	1370	6	680	7	410
4.5	1140	4.5	1120	7	530	8	360
5	950	5	910	8	420	9	320
5.62	790	5.5	790	9	340	10	290
		6	670	9.99	300	11	240
		7	510			12.16	210
		7.82	430				

Working Range Diagram



The Working Range Chart does not take into account boom deflection under load.

Maeda MC405

The MC405 is the first of the Maeda range mini cranes with an outstanding 3.83 tonnes of lifting capacity. The optional fly jib increases the already impressive working range even further. This fantastic model also had a unique pick and carry feature of up to 500kg, width 1380mm.



Features at a glance...

- 3.83 Ton Max Capacity
- 16.8m Max Working Height
- 20.7m (MWH) with Optional Fly Jib
- 500kg Pick & Carry Duty
- Energy Saving System
- Sheaves Protected Inside Boom
- Variable (Hi/Lo) Travel Speeds
- Programmable Moment Limiter
- Hydrostatic Transmission
- Centralised Controls
- 4 Fall / 2 Fall Hook Block
- Automatic Hook Stowage System
- Tilt Sensor / Alarm
- Powerful Two Speed Winch
- Hydraulic Disc Brake
- Remote Control
- Outrigger Interlock System

More Images...



Glazing



Timber Frame Work



Pick and Carry



Restricted Access



Uneven Ground

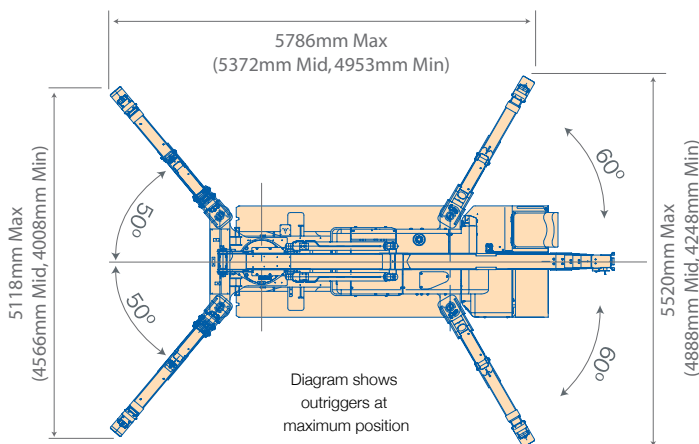
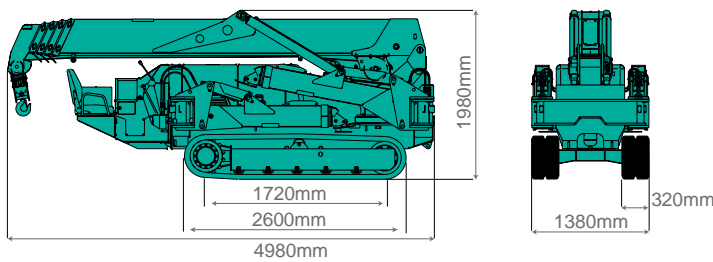
Specifications

Capacity	Maximum	3.83t x 2.7m
Working Radius	Maximum	16.0m x 210kg
Lifting Height	Maximum	16.8m x 1130kg (20.7m x 520kg with Fly-Jib)
Dimensions	MC405 CRM(E)	4980mm x 1380mm x 1980mm
Weight	MC405 CRM	5600kg
	MC405 CRME	5750kg
Hook Speed	Maximum	18m / min. (4 falls, 4th layer)
Single Line Speed	Maximum	72m / min. (4th layer)
Hoist Rope	Type	IWRC 6 x WS (26) Ø 8mm x 92m
Telescopic System	Boom Length	4.735m - 16.475m
	Telescoping Speed	11.7m / 54.2 sec (41.3 sec)
	Boom Type	Fully automatic 5 section pentagonal telescopic boom
Boom Hoist System	Hoist angle / speed	0° - 80° / 24.5 sec. (17 sec.)
Slew System	Slew angle / speed	360° continuous / 2.1 rpm (2.5 rpm)
Outrigger System	Type	Extension and set-up by hydraulic cylinders.
	Maximum extended dimensions	(Length) 5786mm x (Front) 5118mm x (Rear) 5520mm
Traction System	Drive	Hydraulic motor driven, stepless speed changer
	Travel speed	0 - 3.3km/h
	Gradability	20°
	Ground length x width	1720mm x 320mm (Track dimensions)
Ground pressure		0.50 kgf / cm ² (0.52 kgf / cm ² CRME)
Engine	Model	Yanmar 3TNV88-BPMB
	Type	3 Cylinder water cooled diesel
	Rated output	21.4kw / 2400 rpm
	Starting method	Electric
	Fuel tank capacity	Diesel / 60L
Electric Motor (Optional)	Type	Fully enclosed fan cooled motor
	Size	7.5 Kw 4P 380V
Standard Equipment	Overwind protection, hydraulic safety valves, wire rope latch level, machine body inclination alarm, EMO switch, travel lock lever, outrigger interlock device, moment limiter, working status lamp, hour-meter, 4-fall / 2-fall hook block, black rubber tracks and cable remote control.	
Optional Equipment	Radio remote control, white rubber tracks, single fall hook, searcher hook and fly jib.	

Maximum Reach Below Ground Level

Four Fall	Two Fall	Single Fall
20.50m	41.00m	82.00m

Dimensions



Total rated load Outriggers at Maximum position

4.735m/7.695m boom		10.655m boom		13.565m boom		16.475m boom	
Working radius (m)	Total rated load (kg)	Working radius (m)	Total rated load (kg)	Working radius (m)	Total rated load (kg)	Working radius (m)	Total rated load (kg)
<2.7	3830	3.5	3030	4	2230	5	1130
3.5	3030	4	2580	4.5	1930	5.5	980
4	2580	5	2030	5	1730	6	910
5	2030	6	1680	6	1400	7	760
6	1680	7	1380	7	1180	8	650
7	1380	8	1130	8	1030	9	600
7.25	1330	9	880	9	930	10	550
		10.2	580	10	830	11	490
				11	690	12	440
				12	530	13	380
				13.1	430	14	320
						15	260
						16	210

Total rated load Outriggers at any other position

4.735m/7.695m boom		10.655m boom		13.565m boom		16.475m boom	
Working radius (m)	Total rated load (kg)	Working radius (m)	Total rated load (kg)	Working radius (m)	Total rated load (kg)	Working radius (m)	Total rated load (kg)
<2.7	3830	3.5	3030	4	2230	5	1130
3.5	3030	4	2580	4.5	1830	5.5	980
4	2580	5	1880	5	1630	6	910
5	1880	6	1430	6	1330	7	730
6	1430	7	1130	7	1080	8	630
7	1160	8	880	8	880	9	550
7.25	1120	9	740	9	730	10	480
		10.2	490	10	530	11	430
				11	480	12	380
				12	430	13	330
				13.1	330	14	280
						15	220
						16	180

Total rated load Outriggers at Minimum position

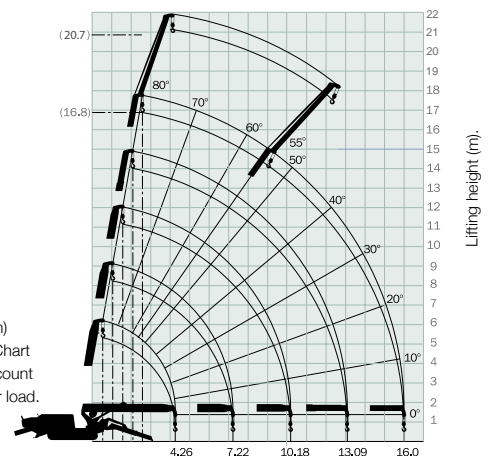
4.735m/7.695m boom		10.655m boom		13.565m boom		16.475m boom	
Working radius (m)	Total rated load (kg)	Working radius (m)	Total rated load (kg)	Working radius (m)	Total rated load (kg)	Working radius (m)	Total rated load (kg)
<2.7	3830	3.5	3030	4	2230	5	1130
3.5	3030	4	2580	4.5	1830	5.5	980
4	2580	5	1680	5	1630	6	880
5	1680	6	1180	6	1180	7	730
6	1180	7	880	7	830	8	530
7	930	8	730	8	680	9	450
7.25	780	9	580	9	550	10	420
		10.2	400	10	430	11	370
				11	380	12	330
				12	350	13	280
				13.1	310	14	240
						15	190
						16	150

Working Range Diagram

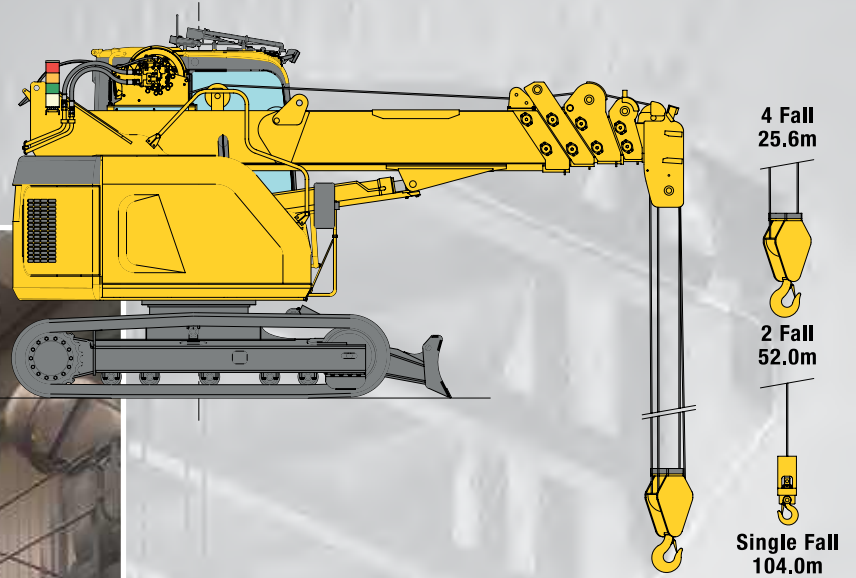
Fly Jib

Boom angle (deg)	kg
72+	520
69	420
66	320
63	250
60	220
55	170

Working radius (m)
The Working Range Chart does not take into account boom deflection under load.



The new Maeda LC785-8B crawler crane has many improved features as per specification.



Specifications

- 4.9 Ton Max Capacity
- 16.35m Max Working Height 20.3m with Optional Fly Jib
- Blade
- 2000kg Pick & Carry Duty
- Minimal Tail Swing
- New, Wider Air Conditioned Cab
- Roof Window Wiper
- Tilt Alarm
- Variable (Hi/Lo) Travel Speeds
- New Improved Moment Limiter
- Hydrostatic Transmission
- 4 Fall / 2 Fall Hook Block
- 7 inch TFT Multi Monitor
- Powerful Two Speed Winch with Hydraulic Disc Brake
- Data Logger



Railway Maintenance



Restricted Access



Industrial Maintenance



General Lifting



Glazing

Total rated load

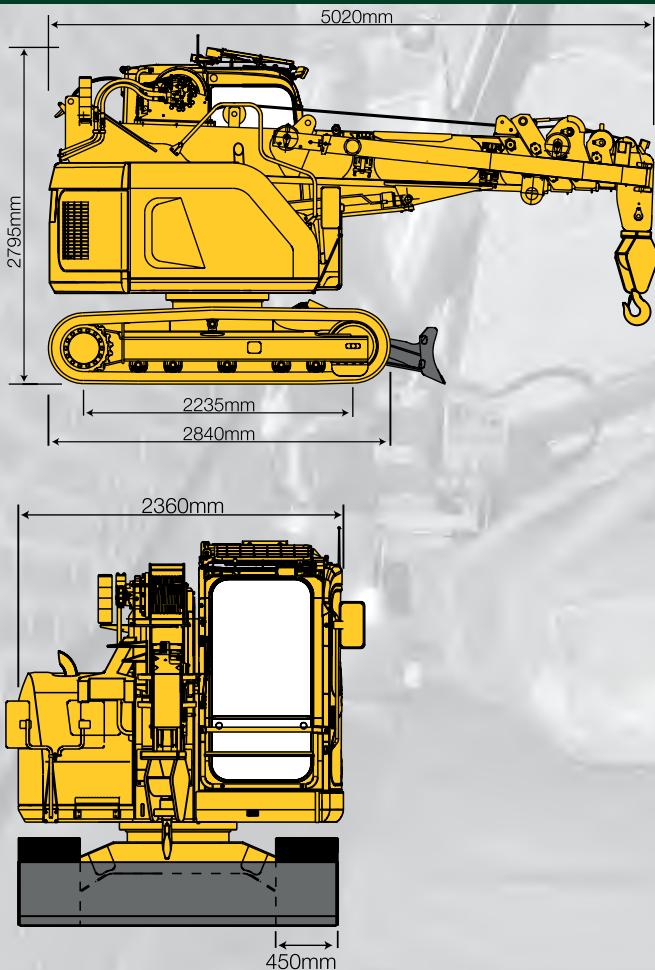
4.63m boom		7.38m boom		10.13m boom		12.88m boom		15.63m boom	
Working radius (m)	Total rated load (kg)	Working radius (m)	Total rated load (kg)	Working radius (m)	Total rated load (kg)	Working radius (m)	Total rated load (kg)	Working radius (m)	Total rated load (kg)
2	4900	2	4900	2	2600	2	2000	2	N/A
2.5	3800	2.5	3760	2.5	2600	2.5	2000	2.5	1400
3	2900	3	2980	3	2310	3	2000	3	1400
3.5	2290	3.5	2420	3.5	2010	3.5	1890	3.5	1400
		4	2000	4	1750	4	1650	4	1400
		4.5	1670	4.5	1530	4.5	1450	4.5	1320
		5	1400	5	1340	5	1280	5	1200
		6	1000	6	1030	6	1010	6	990
				7	780	7	800	7	820
				8	580	8	630	8	680
				9	410	9	500	9	560
						10	390	10	450
						11	300	11	360
								12	280
								13	210
								14	200
								14.52	200

Pick & Carry Duties

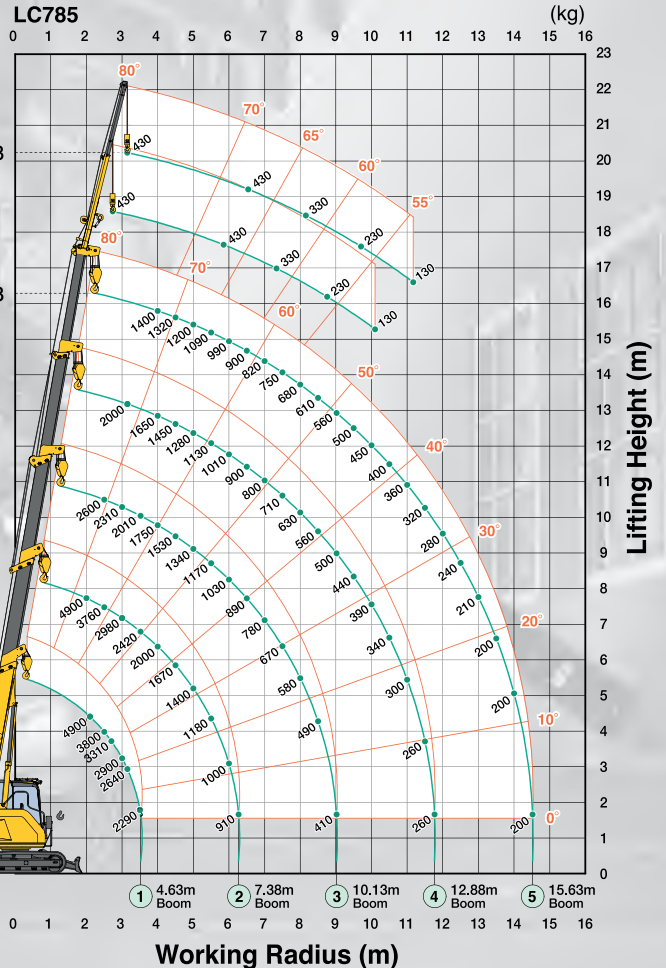
4.63m boom		7.38m boom		10.13m boom	
Working radius (m)	Total rated load (kg)	Working radius (m)	Total rated load (kg)	Working radius (m)	Total rated load (kg)
2	2000	2	2000	2	1400
2.5	2000	2.5	2000	2.5	1400
3	1670	3	1700	3	1360
3.5	1330	3.5	1380	3.5	1170
		4	1140	4	1020
		4.5	960	4.5	890
		5	810	5	770
		5.5	690	5.5	680
		6	590	6	590
		6.27	540	6.27	550
				6.5	510
				7	440
				7.5	380
				8	320
				8.5	270
				9	230
				9.02	230

- The Total Rated Load Charts are based on the actual working radius including boom deflection. The weight of the hook (standard 4 fall - 90kg) must be included as part of the load shown in the Total Rated Load Charts.
- When using two fall or single fall hooks, use the appropriate four fall Total Rated Load Chart but with a maximum load of: Two Fall - 2450kg, Single Fall - 1220kg.

Dimensions



LC785



This working range chart shows total rated load including boom and jib deflection.

MC815C - Technology in Motion.

Specifications

- Crane Capacity: 8.09t x 2.4m
- Max lifting height: 19.6m
- Pick & carry capacity: 1.0t
- 1.5t Hydraulic type Optional Fly Jib.
Max lifting height: 25.5m

Features

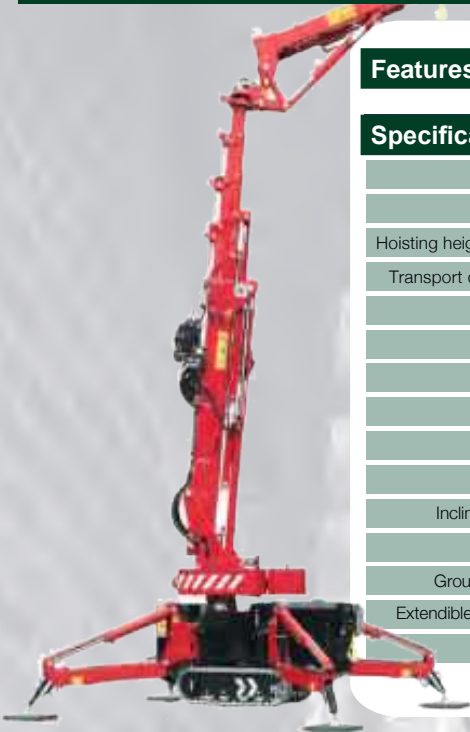
- Power lifting mode
- Joystick type radio remote control
- Self levelling function
- Auto-crane stow function
- Slew restriction device
- EU Stage III B Compliant Engine (DPF type)



New 10.4 inch Touchscreen Multi Monitor.

HOEFLON C6

Multifunctional, robust and very simple operation - that's the C6 compact crane in a nutshell. Its a best seller in the mini crane category. This crane is ideal for placing glass and accurately positioning steel beams. It is the only compact crane that can lift more than its own weight. This makes it possible for one crane to lower another into an underground space.

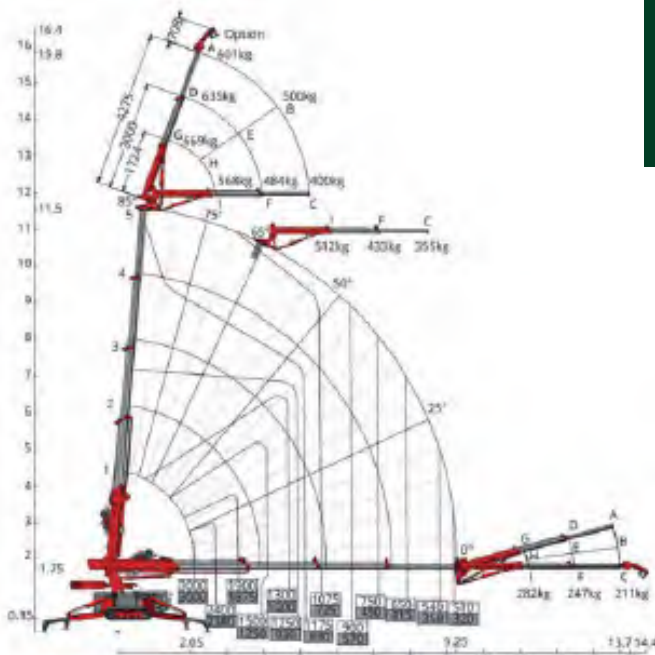


Features at a glance...

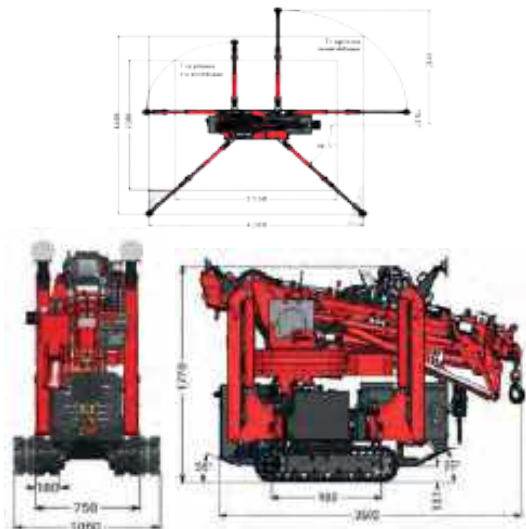
Specifications		Accessories / Options	
Capacity	3,000kg	Dimensions inc. winch and jib	3.14mx0.75mx1.95m
Boom outreach	9.25m and 13.7m with options	Fly jib	4.3m
Hoisting height max without jib	11.5m and 17m with options	Winch	1,000kg, 2,000kg and 3,000kg
Transport dimenstions LxWxH	2.9m x 0.75m x 1.82m	Hoisting speed with winch	20.8m/min
Total weight	2,650kg and 2,850kg with options	Winch cable	40m long
Boom angle	-5° to 83°	Extention section	30° adjustable
Boom system	cylinder and chain system	Electric motor	230v single phase
Slewing angle	360°	Outriggers	position measuring system for steplessly swivelling outriggers
Driving speed	1st gear 1.1km/h 2nd gear 2.2km/h	Outriggers	bend
Engine	Yanmar 3-cylinder diesel	Outriggers	hydraulically extending stepless
Inclination angle, driving	20°	Stewing	unlimited
Outrigger pressure	2,800kg per outrigger	Crawler	non-marking
Ground pressure, tracks	0.79kg/cm²	Crawler	pick and carry
Extendible, removable ballast	600kg	Lighting	work light on boom and jib
Noise	75dB	Storage box	extra storage box
		Speed controller	900 to 1,700rpm

C6 Benefits

- An easy to use, wireless remote controlled machine
- Transport with trailer, 3,500kg
- Electric motor 230v
- Very low machine weight with high hoisting capacity
- This machine can be operational at 16 meters within three minutes



with fly-jib



HOEFLON C10

Lift 4000kg with our C10 compact crane, making it the perfect choice for heavier work in industry and steel erection. Even at a hoisting height of 21m this crane still has an enormous hoisting capacity of 750kg.

The C10 compact crane has 3 speeds, making it exceptionally manoeuvrable. The removable ballast and the easily detachable options make it possible to quickly reduce the total weight of the crane. Simply, this is a machine with many possibilities.

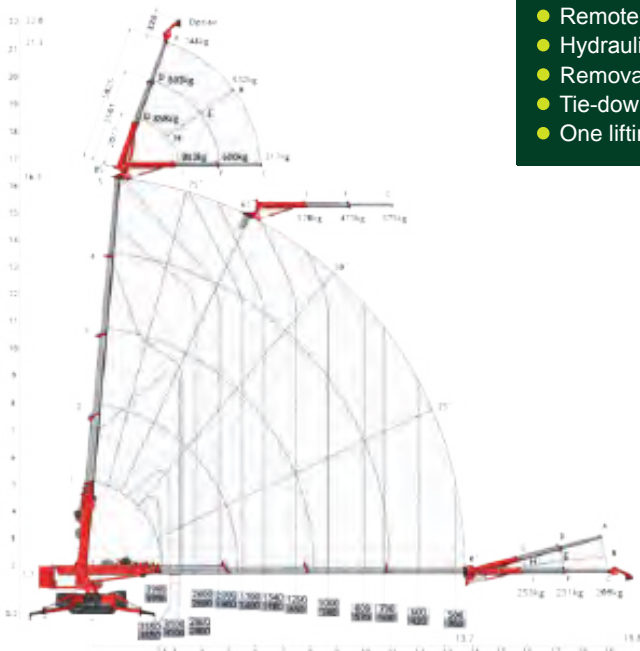
Features at a glance...

Specifications		Accessories / Options	
Capacity	4,000kg	Dimensions inc. winch and jib	4.15mx0.80mx2.07m
Boom outreach	13.7m and 19.8m with options	Fly jib	5.0m
Hoisting height max without jib	16.3m and 22m with options	Winch	1,000kg, 2,000kg and 4,000kg
Transport dimensions LxWxH	3.93m x 0.80m x 1.97m	Hoisting speed with winch	20.8m/min
Total weight	4,400kg and 4,700kg with options	Winch cable	50m long
Boom angle	-5° to 83°	Extension section	30° adjustable
Boom system	Cylinder and chain system	Electric motor	400v / 3 phase
Slewing angle	360°	Stewing	unlimited
Driving speed	1st gear 1.1km/h, 2nd gear 2.3km/h 3rd gear 2.9km/h	Crawler	non-marking
Engine	Yanmar 3-cylinder diesel	Lighting	work light on boom and jib
Inclination angle, driving	20°	Storage box	extra storage box
Outrigger pressure	4,500kg per outrigger	Speed controller	900 to 1,700rpm
ground pressure, tracks	0.72kg/cm ²		
Extendible, removable ballast	1,340kg		
Noise	75dB		



C10 Benefits

- Manoeuvrable with extreme precision
- Remote control outrigger, driving and crane functions
- Hydraulically expandable tracks
- Removable and extend-able ballast
- Tie-down hooks for trailer
- One lifting point



with fly-jib

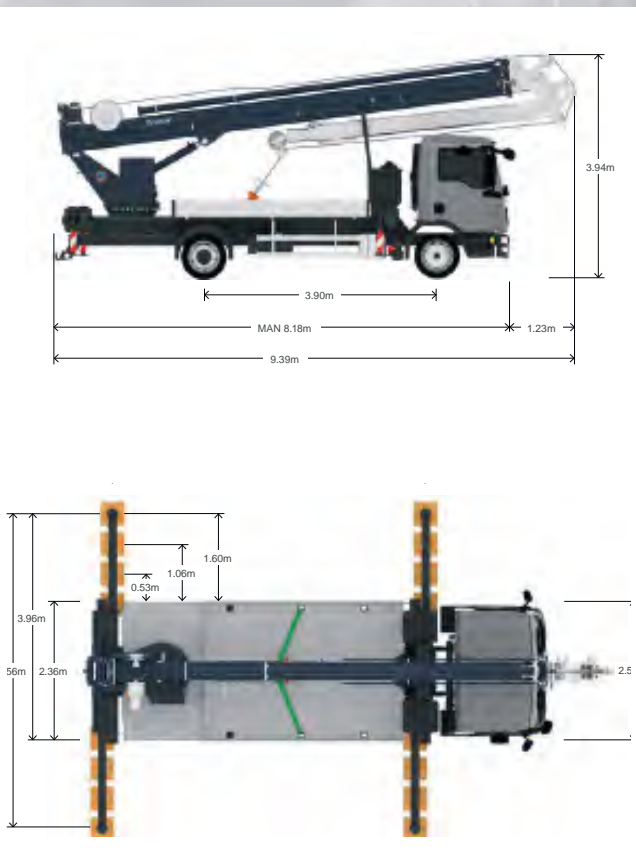


Böcker Truck Crane

Speed and efficiency – these are the main characteristics of smallest Böcker truck-mounted crane. Despite its compact and extremely light design, the AK 35/3000 still impresses by strong performance. With an extension length of 35 m and a working range up to 26.6 m, this crane reaches impressive working radii. The fly jib is mechanically extendible up to 11.2 m so that the working area can be optimally used.

Using the AK 35/3000 you also benefit from the well-proven advantages of Böcker crane technology, e.g. the sensitive telescopic functions when working with flat boom angle and the minimum slew radius.



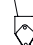

Dimensions



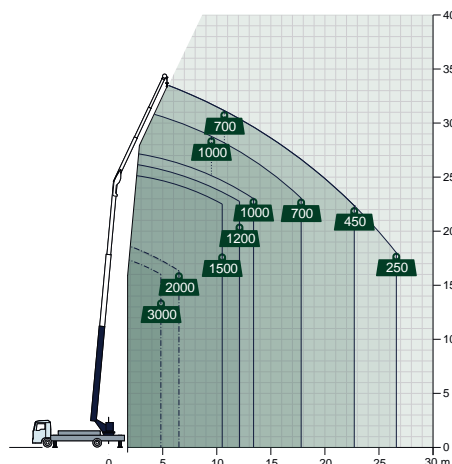
Specifications

Permissible gross vehicle weight (t)	8.6
Max. payload (kg)	1.500 (optional 3.000)
Max. extension length (m)	35,0
Working height up to boom (m)	23.7
Boom extendable (m)	5.2 / 8.3 / 11.3
Boom payload (kg)	1.500 / 1.000 / 700
Main mast angle (degrees)	85
Boom angle (degrees)	160
Pivoting range (degrees)	+/- 310
Hook speed (m/min)	60
Range for crane operation at 250 kg (m)	26.6
Range for crane operation at 500 kg (m)	20.0kg (22.7 / 450 kg)
Range for crane operation at 1 t (m)	13.4
Range for crane operation at 2 t (m)	6.5
Range for crane operation at 4 t (m)	-
Range for crane operation at 6 t (m)	-
Range for crane operation at 12 t (m)	-
Range for platform operation with rotatable basket (m)	21.1 at 250 kg 24.1 at 100 kg
Range for platform operation with hooped basket (m)	22.0 at 250 kg 24.5 at 100 kg
Working height with rotatable basket max (m)	32.8
Working height with hooped basket max (m)	33

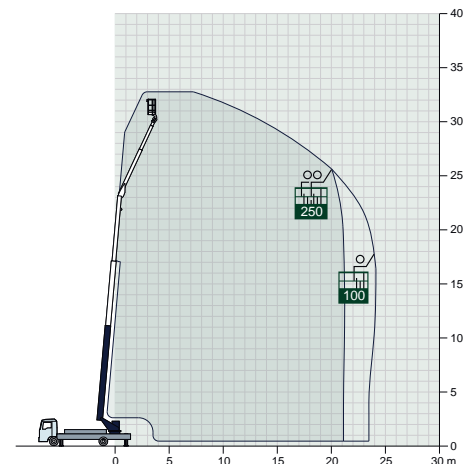
Working range crane operation

-  Load in kg
-  Single-fall operation
-  Two-fall operation
-  Increased jib load with reduced working range

All weights are in kg.
Measurements can fluctuate slightly.

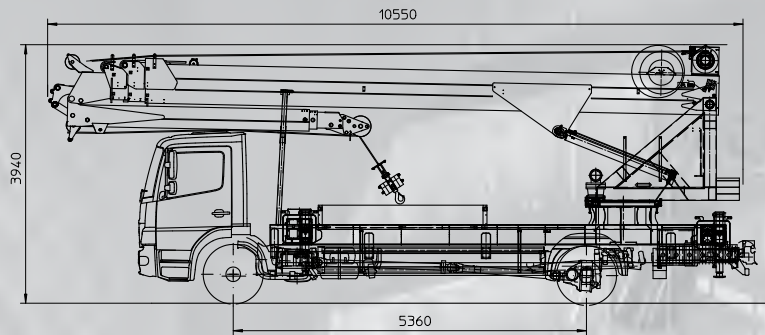


Working range platform operation



BOCKER TRUCK CRANE

Aluminium lightweight crane with 44 metre reach.



Dimensions / Specification

Telescope arm angle	approx. 87	degrees
Jib angle	approx. 165	degrees
Swivel area	approx. 620	degrees
Working height up to jib	approx. 33.00	m
Max. extension length including mech extension (2,0 m)	approx. 44.00	m
Max. extension length	approx. 42.00	m
Extendible Jib		
Basic length	approx. 4.55	m
max. extendible length	approx. 8.90	m
Current of hydraulic pump	approx. 100	litres
Hook speed	approx. 60	m/min
Support length	approx. 6.05	m
Support width	approx. 5.74	m
One-sided support	approx. 4.15	m
Length vehicle	approx. 10.55	m
Width vehicle	approx. 2.55	m
Height vehicle DB/MAN	approx. 3.94/3.99	m
Body weight	approx. 9,600	kg

LMax. range of platform operation with 15,5 t truck

500 kg Lifting capacity	approx. 30.00	m
1000 kg Lifting capacity	approx. 22.00	m
2000 kg Lifting capacity	approx. 14.00	m
4000 kg Lifting capacity	approx. 8.20	m

LMax. range of platform operation

		PK 250-1	PK 250-D
100 kg Lifting capacity	approx.	33.00	33.00 m
250 kg Lifting capacity	approx.	30.00	30.00 m
Max. working height	approx.	41.50	38.00 m

Truck Data

Min. wheelbase	5360	mm
Gross vehicle weight	15.5	t
Max. dead weight	5.3	t



32T Lorry

Our new fleet which are FORS Gold compliant and with Euro 6 engines meet all your environmental and site safety requirements.

**NEW
FLEET**



Pick & Carry Crane Standard Specifications - can be used in conjunction with a minifor winch.

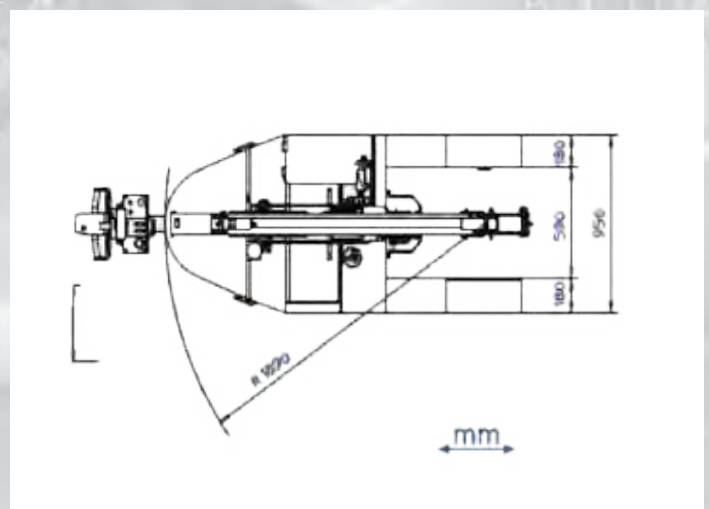
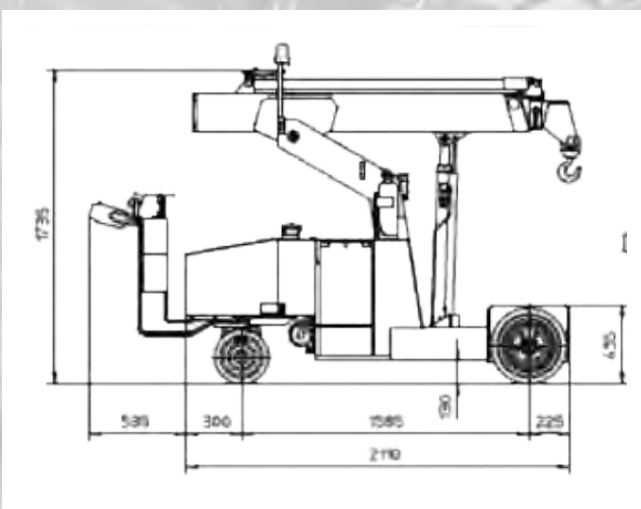
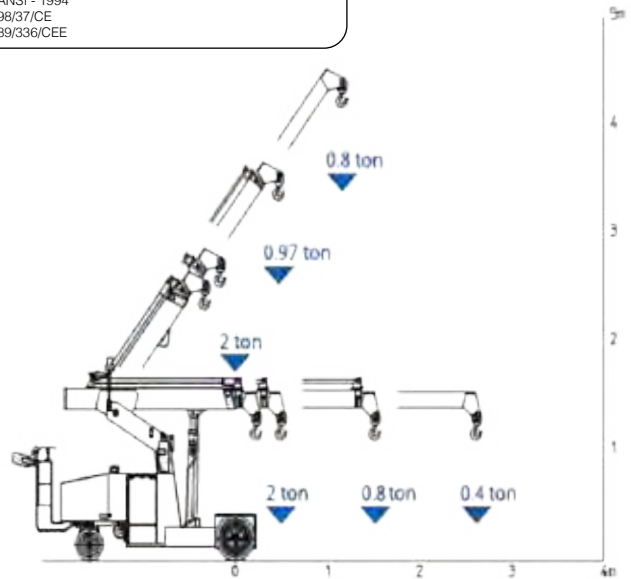
Max Lifting Capacity:	2,000 kg
Width:	950mm
Weight	1,950 kg (basic spec)
Lift Height	4.0m
Power Source	Electric
Motor	2kW - 24v AC fanned reversible electric motor fitted with variable speed control, disk brake on drive wheel electrically operated
Transmission	Reduction between motor and wheel by gears in oil bath

Frame:	Pre-formed and welded steel plate with integral counterweight
Boom:	2 hydraulic telescopic sections
Hydraulic System:	Self enclosed circuit, powered by geared pump, fitted with self cancelling valves, maximum hydraulic pressure 180 Bar
Safe Load Device:	Fitted electronic load indicator, visual audible indicators to meet CE Regulations.
Tyres:	Front - 2 solid tyres 15 x 6-8" Rear - 1 cushion 300 x 138mm



The crane complies with following international standards:

- L.S.P.E.S.L.
- DN 15018 (1,3) - 15019 (1) Class H2 B3
- ANSI - 1994
- 98/37/CE
- 89/336/CEE



SLK 15 & 25 Glass Max Counter Balance Floor Crane with Crane and fork attachments



Features at a glance...

Specification - SLK Glass Max

Technical Data	SLK 15	SLK 25
Lifting Standard Fork ups	5.00m	7.90m
Height Stowed	2.04m	2.04m
Length Stowed	0.90m	1.02m
Length Working Position	1.80m	2.20m
Width Stowed	0.80m	0.80m
Width Working Position	2.20m	2.20m
Ground Clearance Working Position	0.08m	0.08m
Loading Height Minimum	0.27m	0.27m
Pay Load	300kg	300kg
Weight Basic Chassis	144kg	204kg
Weight Complete <small>8 x counter balance weights @ 16kg</small>	272kg	332kg

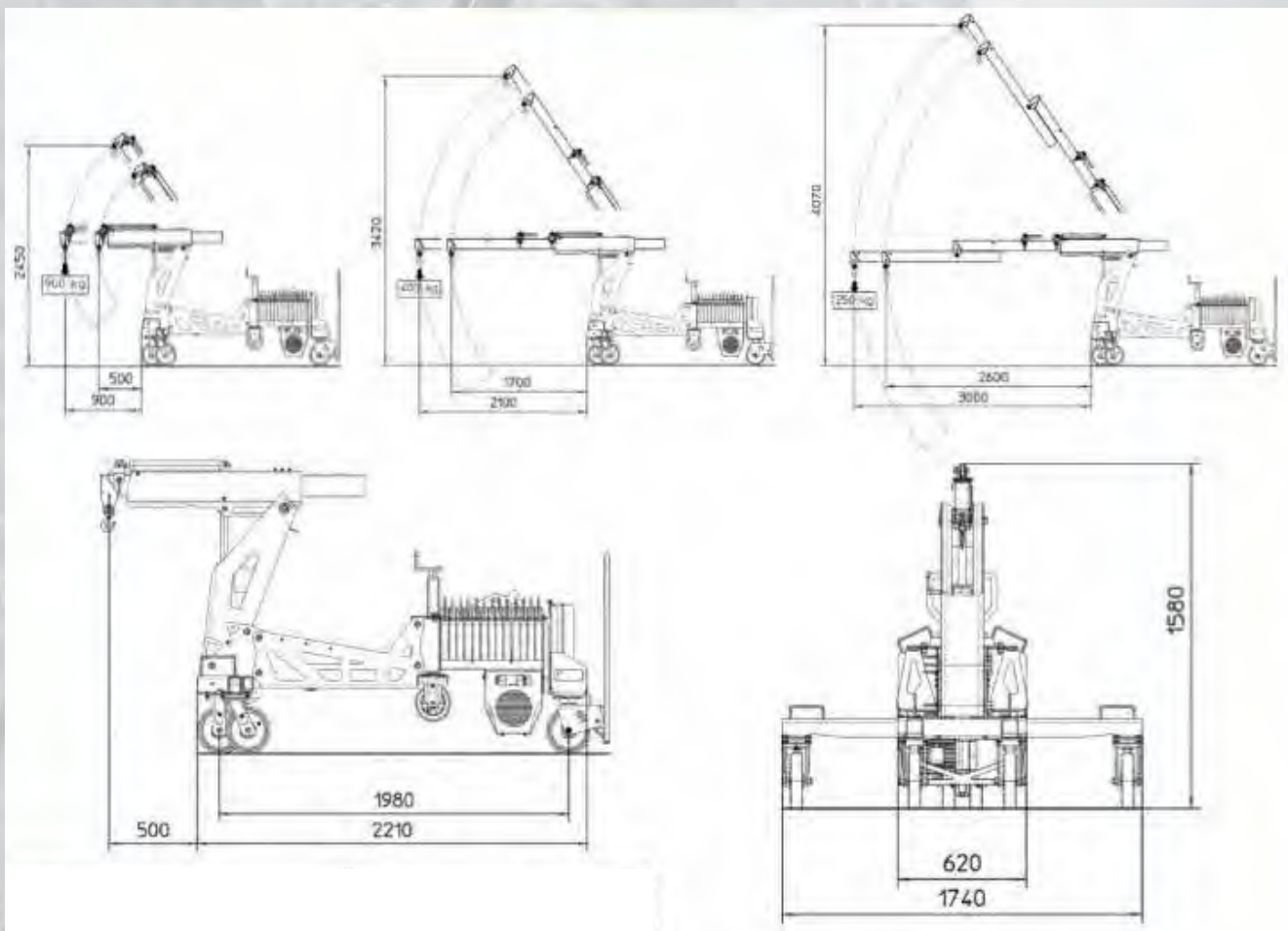
Floor Cranes

Counterbalance floor cranes with hydraulic lifting arm.



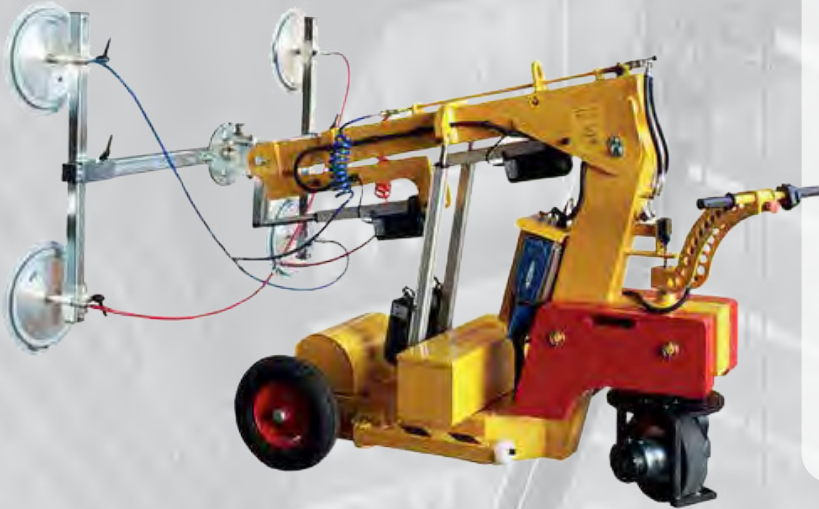
Models available: GK200 – GK900 Floor Crane – Counterbalance Floor Cranes with Hydraulic lifting arm (large wheels available like “big foot” model)

- Max Lifting Capacity 200kg – 900kg
- Max (below the Hook) Height: 1.5m – 3.05m
- Ideal for Commercial Glazing, can be used in conjunction with a Vacuum Lifter for glazing shopfronts and install unitised panels from the floor above in conjunction with a minifor
- Easily assembled/disassembled for transportation purposes (passenger elevator friendly...)
- Lockable castor wheels



580 range of application:

Suitable for lifting and moving of Glass panels up to 580kg
Can be used in conjunction with a minifor winch Lift height 2.4m.



Features at a glance...

- Handy and compact
- Multifunctional
- Dual circuit vacuum system
- Self-driven battery powered
- SWL 580KG
- Safe and easy to operate
- Labour saving
- Improves work environment
- Can be transported in a van

608 range of application:

Suitable for lifting and moving of Glass panels up to 608kg
Hook attachment Can be used in conjunction with a minifor winch
Lift height 2.4m.



Features at a glance...

- Off road with front-wheel drive
- Manoeverable with dual rear wheels
- Foam filled tyres
- Self-driven
- Electronic brake
- Lifting height 2950mm (centre of yoke)
- 2 vacuum circuits with 2 pumps
- 4 suction pads O 400mm
- Ergonomic operation handle
- Waterproof according to ip65

SL808 Outdoor

Lifts up to 820kg / 1,800lbs.

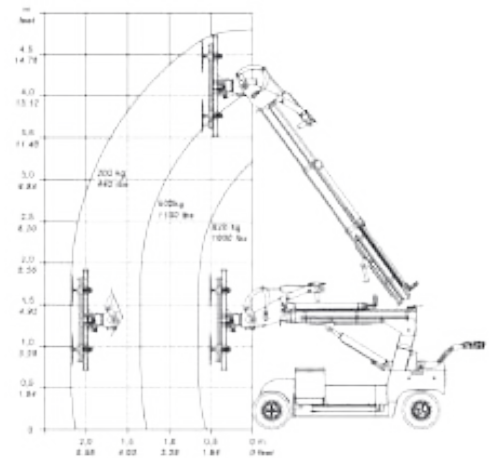
The SL 808 Outdoor combines lifting power with an impressive reach. Large window sections are easily and precisely handled using the multifunctional, rotary head.

Features at a glance...

Specifications

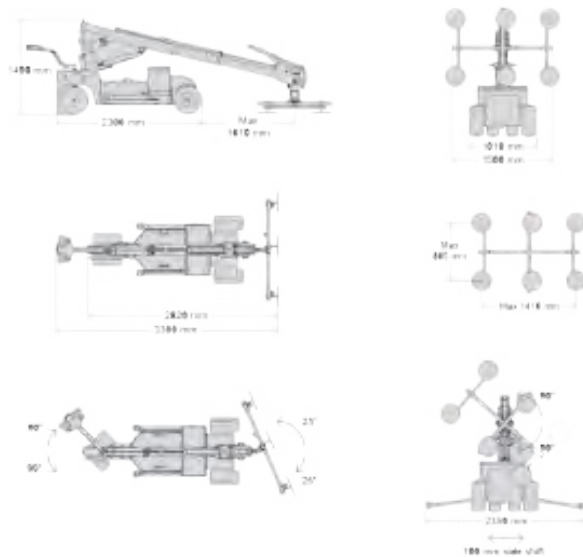
Lifting capacity, arm in / out	820/200kg - 1800/440lbs
Lifting height	4,400mm / 173in
Extension of arm	2 x 830mm / 2 x 33in
Tip from horizontal	42° back 86° forward
Side shift	100mm / 4in
Charging voltage	230v / 110v
Charging time	Approx. 8hrs
Battery	4 x 134 Ah AGM
Running Period	Up to 8hrs
Front wheel drive	2000 W AC
Suction pads	4 x O400mm & 2 x O300mm 4 x O16in & 2 x O12in
Curb weight	1,300kg / 2,866lbs
Class	IP 65

Lifting Diagram



SL808 Benefits

- A wireless remote controls all functions and offers freedom of movement for the operator
- Tyres are wide and poly-filled puncture proof
- The lift has a proportional hydraulic system that enables the operator to control the arm very precisely so that small adjustments of the controls results in small movements of the yoke and arm



SL1008 Outdoor

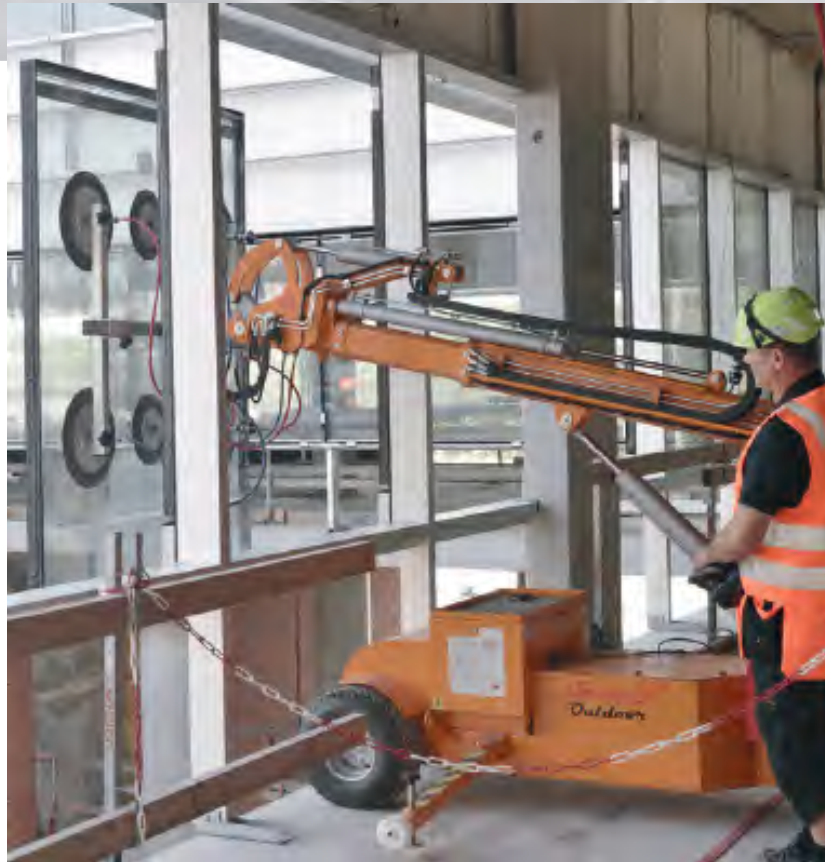
Lifts up to 1,000kg / 2,200lbs.

The SL 1008 Outdoor is our largest lift and combines maximum lifting power with an impressive reach. Large window sections are easily and precisely handled using the multifunctional, rotary head.

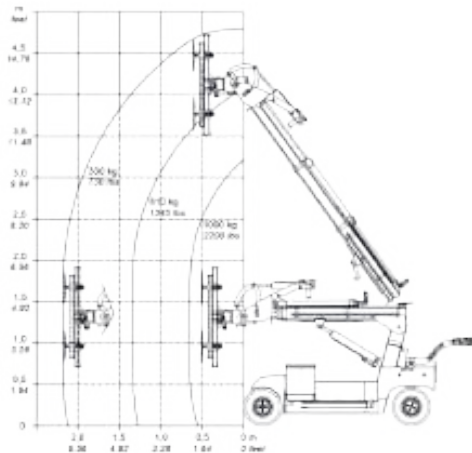
Features at a glance...

Specifications

Lifting capacity, arm in / out	1000/300kg - 2,200/728lbs
Lifting height	4,400mm / 173in
Extension of arm	2 x 830mm / 2 x 33in
Tip from horizontal	42° back 86° forward
Side shift	100mm / 4in
Charging voltage	230v / 110v
Charging time	Approx. 8hrs
Battery	4 x 134 Ah AGM
Running Period	Up to 8hrs
Front wheel drive	2000 W AC
Suction pads	6 x O400mm / O16in
Curb weight	1,300kg / 2,866lbs
Class	IP 65

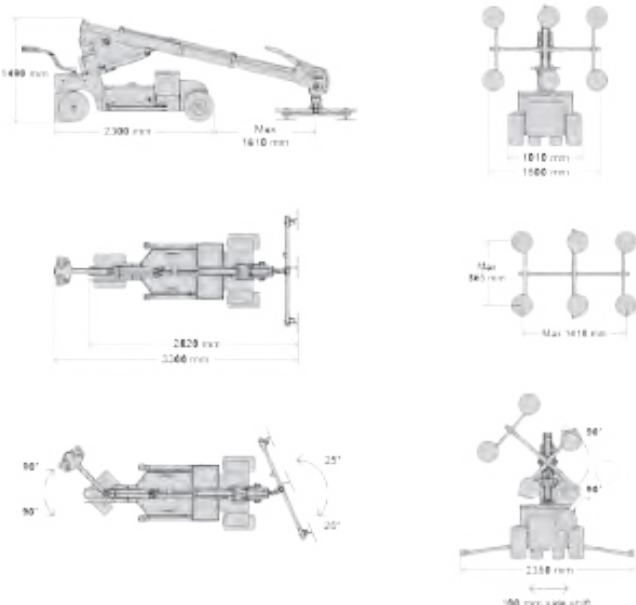


Lifting Diagram



SL1008 Benefits

- A wireless remote controls all functions and offers freedom of movement for the operator
- Tyres are wide and poly-filled puncture proof
- The lift has a proportional hydraulic system that enables the operator to control the arm very precisely so that small adjustments of the controls results in small movements of the yoke and arm



In addition to a modular design, these Power-Grip vacuum lifters provide 180 degree rotation and 90 degree tilt, for expandability and a full range of load motion at the installation site or on the shop floor.

P11104DC (for flat materials) **P11004DC** (for curved materials)
P1HV1104DC (for rough materials)

Features at a glance...

- Average Unit Weight: 32kg
- Standard Operating Power: 12 volts DC, 10 amps (for each Pad Channel)
- Load Movement: Manual rotation, 180° edgewise, with locking in three positions.
- Manual tilt, 90° between upright and flat, with automatic latching in upright position.
- (Units can be tilted ONLY when the lift bar is locked in the centre position, as shown on drawings.)
- On-board battery and charger
- Battery energy gauge
- Low vacuum warning light
- Vacuum gauge
- Vacuum line filter
- Vacuum reserve tank
- 320kg SWL



MT2HV11DC Manual Tilter 300

This power-grip vacuum lifter provides an economical way for a single person to lift and tilt loads.



Features at a glance...

- Standard pad spread 279mm x 584mm
- SWL 135kg
- Low vacuum warning light
- Low vacuum warning buzzer
- On board battery charger
- Vacuum warning gauges
- Reserve vacuum tank
- Load movement manual tilt 90° degrees

MRT4-DC Lifter

Designed for use with a crane or other hoisting equipment.

The MRT4-DC lifter employs vacuum to hold the load.

They provide manual 360 degree rotation and manual 90 degree tilt movements for load manipulation.



Features at a glance...

- Average Unit Weight: 56kg
- Standard Operating Power: 12 volts DC, 10 amps
- Load Movement: Manual rotation, 360° edgewise, with locking in four positions.
- Manual tilt, 90° between upright and flat, with automatic latching in upright position.
- On-board battery and charger
- Battery energy gauge
- Low vacuum warning light
- Vacuum gauge
- Vacuum line filter
- Vacuum reserve tank
- SWL 320kg

MRT6-DC Lifter

Designed for use with a crane or other hoisting equipment.

The MRT6-DC lifter employs vacuum to hold the load.

They provide manual 360 degree rotation and manual 90 degree tilt movements for load manipulation.



Features at a glance...

- Average Unit Weight: 86kg
- Standard Operating Power: 12 volts DC, 10 amps
- Load Movement: Manual rotation, 360° edgewise, with locking in eight positions.
- Manual tilt, 90° between upright and flat, with automatic latching in upright position.
- On-board battery and charger
- Battery energy gauge
- Low vacuum warning light
- Vacuum gauge
- Vacuum line filter
- Vacuum reserve tank
- SWL 500kg

Range of application:

Lifting of glass elements up to 600kg
Can be inserted between the building and scaffold with lifting ring.

Features at a glance...

- Two independent vacuum circuits
- Dual safety system
- Integrated reserve vacuum
- Integrated gauge monitoring vacuum
- Optical and acoustic alarms
- SWL 600kg
- SWL 300kg with ring configuration
- Fulfils DINEN13155 requirement



DSZ2 is the most slimline vacuum lift.

Available with an impressive 900kg and 750kg SWL tilt damping and rotation. Dual circuit vacuum system.



Specification

- Dual vacuum circuit 2 pumps 2 tanks
- SWL 750kg and 900kg
- 110v charging
- Weight 75kg
- Tilt damping system
- Audible and visual alarm system
- Travel trolley

Range of application:

Suitable for lifting and moving of large format glass panels in combination with a mini crane.
 Crane attachment for use on MC285, MC305, MC405.



Features at a glance...

- Mounting directly at the crane arm
- 2 independent vacuum circuits, each vacuum circuit with dual safety system
- Integrated reserve vacuum
- Integrated gauge, monitoring the vacuum and power supply
- Optical and acoustic alarm signals
- Batteries attached on the lower end of the crane arm
- Electric actuators for a precise, seamless movement
- Rotating (95°), swivelling (+40°) and tilting (120°)
- All pneumatic functions by remote control
- Extension arms
- Fulfils DIN EN 13155 requirements
- Safe working load: 300kg/600kg (400mm suction cups)
- Weight of device: vacuum unit: approx. 123kg

OKTOPUS GL-R600

Suitable for the installation of large format glass and facade panels within difficult-to-access areas.
 (Facade apertures, roof overhangs, slanted glazings).

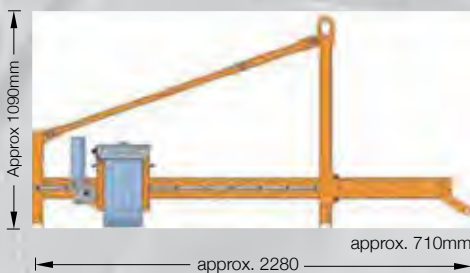


Features at a glance...

- Cable remote control operated
- Motor-driven counterweights
- Counter balance loads up to 600kg powered by a high capacity rechargeable battery
- Integrated gauge for monitoring the power supply

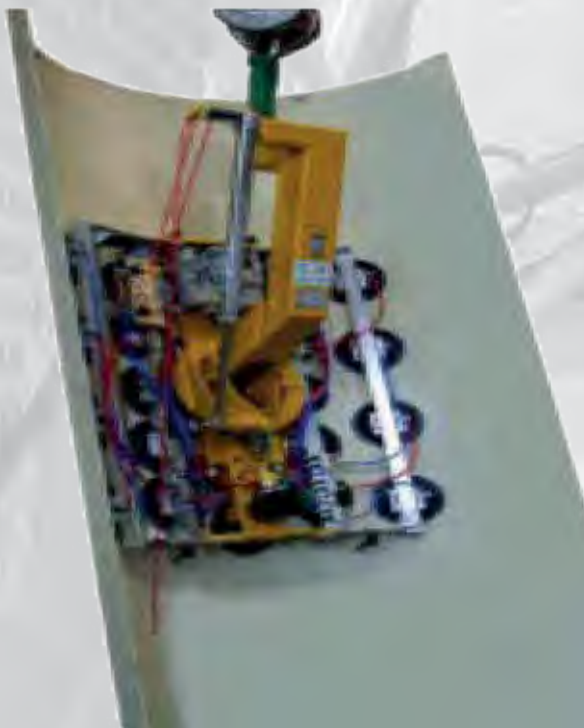
Weight: without counterweight: approx. 82kg
 8pcs. of counterweight: approx. 282kg
 1 counterweight = 25kg

Controls: cable remote control
 Power supply: 24 V battery



Kombi 7411-DSG7

with 32 suction cups 540 in 5 rows
with extension set 7003-VLDSG7.



Specification

Description

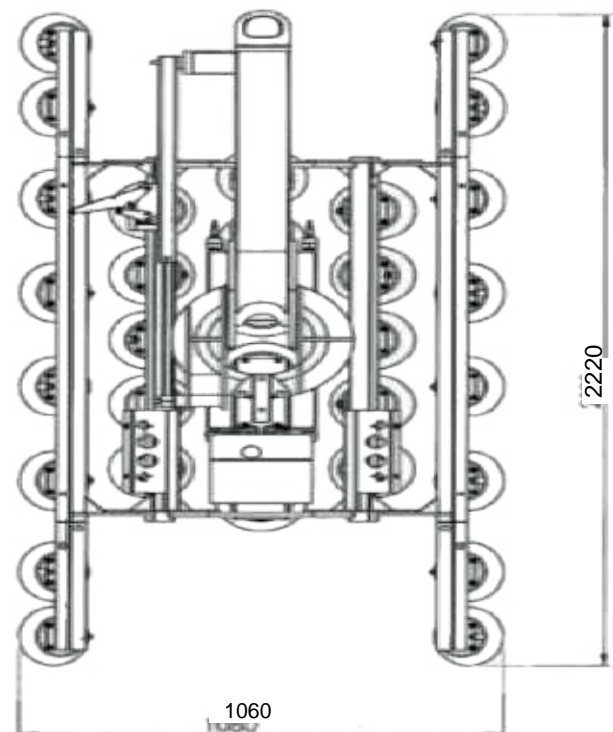
- Increased safety via 4 independent vacuum circuits
- Each vacuum circuit has a vacuum tank with non return valve, vacuum switch and control vacuum meter
- 4 completely closed vacuum circuits prevent loss of vacuum at power failure
- Acoustic signal indicates insufficient vacuum
- Carrying bars are turnable on bearings for minimum radius of 600mm
- All suction cups lockable individually
- Turning device with roller bearings and locking every 90°
- Tilting device (0° to 90°) with locking device every 3°

Vacuum Generation

- For battery operation with quick-change device for short battery change times of less than one minute
- Battery charger for charging second battery
- No cable - no hose

Operation

- ON/OFF directly at the device
- SUCTION/RELEASE via hand valve at the device
- Turning tackle
- Tilting tackle



Range of application:

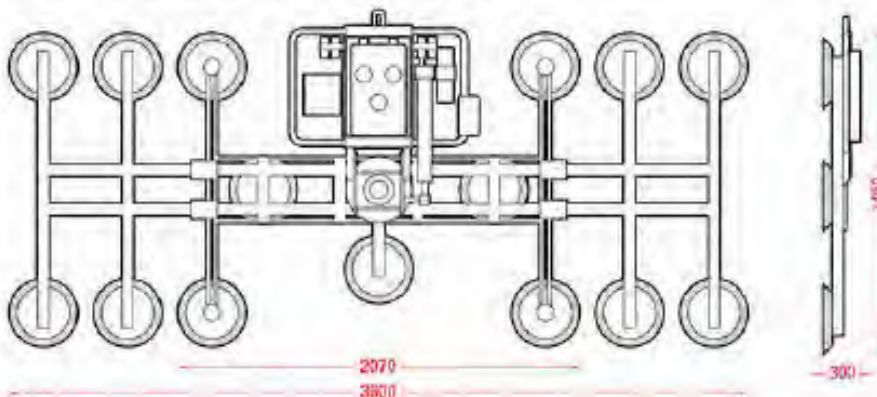
Hydraulica full motorised rotation and tilt dual circuit vacuum system. Wired remote control up to 200kg SWL.

Specification

- Dual circuit vacuum system
- 18 pad multi configuration
- Motorised tilt and rotate
- SWL 1200kg and 2000kg
- Wired remote control
- Transport trolley



Technical Data - Hydraulica 1200-A (mm)



Clamping carriage, self-clamping

With air tyre's for quiet transport. For materials up to 100 mm width and 200 kg weight. Inner felt linings. Includes 2 spacing inserts 250 x 70 x 30 mm for thin material. Includes 4m belt to keep loads securely in place, as well as a guiding rod for small loads.

Clamping Carriage, self-Clamping

New - Now with air tyres for uneven surfaces

Length - 30 cm

Width - 30 cm

Height - 30 cm

Weight - 7.72 kg



A-Frame Glass Stillages

Various sizes available - can be easily lifted by a forklift truck or crane for safer, quicker transportation of glass on large sites.

The heavy duty compounds wheels are suitable for use on rough ground.

We can also custom build A-Frames and Stillages to match your load requirements.



GGT 700 Glass Transportation Trolley

Features at a glance...

- Adjustable height
- Adjustable length
- Capable of transporting 6m lengths
- Capable of transporting 4m height
- Independent steering
- Fitted with vacuum cups
- SWL700KG



Particulate Filters

Three sizes to fit various applications.

Supplied as a fully assembled kit to ensure easy fitment

Easy to replace elements

Re-usable mounting kit to minimise costs



Sutbusta features at a glance...

- 60cm wide x 75cm long x 60cm high
- Weight 40kg
- 40 engine hour cycles between regeneration
- 4.5 hours charge time
- 220v - 240v, 9A, 2kW power supply
- Removes 95% of diesel particulate
- Can be connected to any diesel equipment up to 3ltr (90kW power)

Specification

MINIFOR hoists are used to lift or pull objects over great distances depending on the wire rope length. They are suitable for use in numerous configurations. They are operated through a pushbutton control. Optionally, the MINIFOR hoist can be equipped with a wire rope reeling device or a wireless remote control.

Portable Hoist

Portable hoist to lift and pull loads, for utilisation in numerous configurations.



- Capacity 300kg, 500kg or 950kg
- Low weight
- Quick installation
- Long wire rope length
- Easy to use, light-weight, robust, powerful
- Available as single phase and three phase model
- Alternatively with cable reeling device (max. 40 m), wireless remote control, set of sheave blocks

Various rope lengths available

Manual Chain Hoist

Hand operated manual chain hoists (also commonly known as a chain block or block and tackle) are a piece of portable lifting equipment in versatile configurations; they are very adaptable to the many alternative working scenarios and working environments including permanent and temporary installations.



Capacity:	1000kg – 5000kg
Number of falls	1
Hoist weight	5kg – 12kg
Power source	Manual
Various Chain Lengths available	

Electric chain hoist Lodestar



The CM Lodestar Electric Chain Hoist is known as one of the most robust hoists on the market with tough aluminium alloy covers that totally enclose the mechanical and electrical components with efficient heat dissipation. Well known throughout the world the Lodestar is manufactured in the USA and as well as normal 400v we can offer 110v and 230v options for single phase operation- ideal for hire companies and building sites where three phase power is not available.

With capacities up to 3,000kg to suit most applications, the ergonomic hoist features handy carrying handles for easy transportation and 1m supply cable with Cee-Form plug. The Lodestar industrial hoist boasts an operating duty at 50% (30 minutes continuous use per

hour) and FEM classification of 2M, ideal for intense operation.

The low voltage pendant control is protected to IP65 and every hoist features adjustable upper and lower limit switches, so you can easily set the required hook path. A lifetime lubricated gearbox contributes heavily to exceptional service and maintenance characteristics.

Designed with low headroom in mind the Lodestar features small closed height dimensions and perfect for long heights of lift for applications such as wind turbines. Industrial strength lifting is the Lodestar speciality and this hoist just keeps on lifting.

Various rope lengths available

Fork Mounted Extending Jib: Various sizes

The extending version allows the movement of long and awkward loads from inaccessible locations, but with up to 9 different lifting positions and with the added benefit of two hooks and shackles so as to 'cradle' your load.



Fork Lift Attachment

The Adjustable Fork Mounted Hook provides a quick and economical method of the lifting and positioning of unpalletised loads.

Multiple lifting positions can be achieved by the correct positioning of the attachment along the fork blade.



Range of application:

Suitable for lifting and lowering personnel in combination with a mini crane.
Crane attachment for use on Maeda MC305, MC405.

Features at a glance...

- Mounting directly on to the crane hook
- Roof cover with pitch
- Wheels to roll against the face of the building
- Aluminium construction
- Drainage holes in the floor
- Both one and two personnel baskets available
- Integrated tool tray
- Emergency lowering system with the crane and basket combination



VERIBOR blue line suction lifter, 3 suction cups - Various sizes/specifications available



For heavy loads. Tested by TUV and safety certified with the GS sign. Suitable for all materials with smooth, flat, air-tight surfaces such as glass, plastic, metal, coated wood, marble, etc. Spare suction discs are supplied complete with suction pad, lever, bolt, spring and pressure plate.

VERIBOR blue line suction lifter, 2 - cup, transverse handle

Suction Pad - 120mm Ø
Number of suction pads - 3
Load Capacity - 100kg
Lifting Direction - Parallel
Weight - 1.215kg

Various Glass Carrier/ Aquaglass (wet)



Glazing Shovel's Spatulars



Pry Bar



A Mini Crane Hire Training

A Mini Crane Hire offer an accredited CPCS training centre for Mini cranes, lifting personnel, vacuum lifters, floor cranes and smartlift's. These training courses vary in duration and can last 1-4 days dependant on the type of training.



Training

- A66 Mini Crane Operator
- Appointed Person
- Lift Supervisor
- Slinger Signaller
- Vacuum Lift
- Floor Crane
- Smartlift

A Mini Crane Hire Service and Testing Centre Manufacturer trained personnel Bespoke Engineering



Testing/Service

- Mini Crane
- SLK
- Vacuum lift
- Smartlift
- Lifting Gear
- Bespoke Engineering



SMARTLIFT

Mini Cranes Huge Potential...

Supplied Nationally



“AMCH” A Mini Crane Hire Company Limited North West

Unit 7D, Academy Business Park, Liverpool L33 7SA.

Tel: 0844 770 6774

Email: info@amchire.com

Heathrow

Unit 5, Heathrow International Trading Estate

Heathrow TW4 6HB.

Tel: 0203 725 6215



GLAZING ROBOTS CRANES VACUUM LIFTERS
ROBOTS CRANES VACUUM LIFTERS MINICRANES GL
GLAZING ROBOTS CRANES VACUUM LIFTERS
ROBOTS CRANES VACUUM LIFTERS MINICRANES GL
GLAZING ROBOTS CRANES VACUUM LIFTERS
ROBOTS CRANES VACUUM LIFTERS MINICRANES GL

AMCH

A Mini Crane Hire Company Limited

www.amchire.com