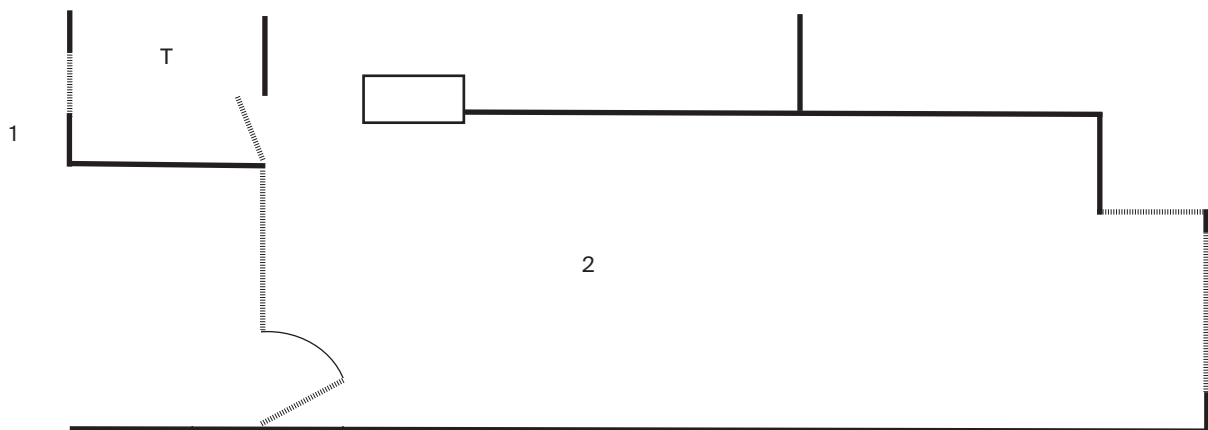


List of works

1. Justin Balmain
Not Everyone Understands Magic, 2021
LED Lightbox Sign installed on
the exterior brickwork of Gertrude
Glasshouse
540mm x 349mm
2. Justin Balmain
*All Structures Are As One: Potent,
Adaptable, Removable*, 2021
Gertrude Glasshouse LED grid lighting
system designed by Sibling Achitecture in
2016, lowered and installed on the floor
4740mm x 11585mm



31 Days without Light

Justin Balmain

Gertrude Glasshouse

Friday 22 October - Saturday 13 November 2021

Within the archives of The Museum of European and Mediterranean Civilisations in Marseille, France, is a malefic mirror that has haunted at least one artist, museum staff, and institutions across temporalities. It has been subject to an exorcism (if objects can be exorcised?), has been held responsible for an appendix removal and a driving accident and now exists within archival limbo. Viewing the mirror, it seems diminutive for the magic it holds; the size of a 7" EP. (I'm on Discogs trying to find an Eddie Amador 7" but I don't think they exist. That's an aside.) The idea of objects always seems more potent than their actuality.

31 Days without Light is a sculptural, architectural and artistic intervention within, and outside, of Gertrude Glasshouse. Acting as a precursor to an in-development film, which draws upon ideas of magic, reflection and representation, this exhibition utilises and reimagines the architecture as a means to think through inversion, power, shadows and doubling. Like a mirror, the exhibition seeks suspension, a further image obscured, transient, held together by something outside itself. I *think* that is magic?

Justin Balmain's research-led approach draws on visual art, video essay and documentary disciplines to create hybrid multimedia works. The work addresses the strategies and functions of objects at the interstice of virtual and actual space, and within the collective imagination. Studio experimentation and collaboration has included cinematographers, performers, painters, writers, industrial designers, ethnographers, curators, activists and pop-musicians.

Balmain's artwork has been exhibited widely in Australia, Europe, the USA and New Zealand, and received support through the Australia Council for the Arts, Create NSW, Creative Victoria, City of Melbourne, National Association for Visual Arts, the Ian Potter Foundation, the Wassaic Project (New York), and received critical acclaim in the form of prizes, reviews, and is held within public and private collections. Since 2017 he has been engaged in a long-term research-driven residency with Enough Room for Space, Brussels, that continues through visits and discourse.

Gertrude Glasshouse is generously supported by Michael Schwarz and David Clouston.

31 Days without Light is generously supported by the City of Yarra, through the 2021 Annual Grants Program.

