

# BARILLA THE CERTIFIED EPD PROCESS

**Luca Ruini**

Health & Safety, Environment and Energy Vice President  
at Barilla Group

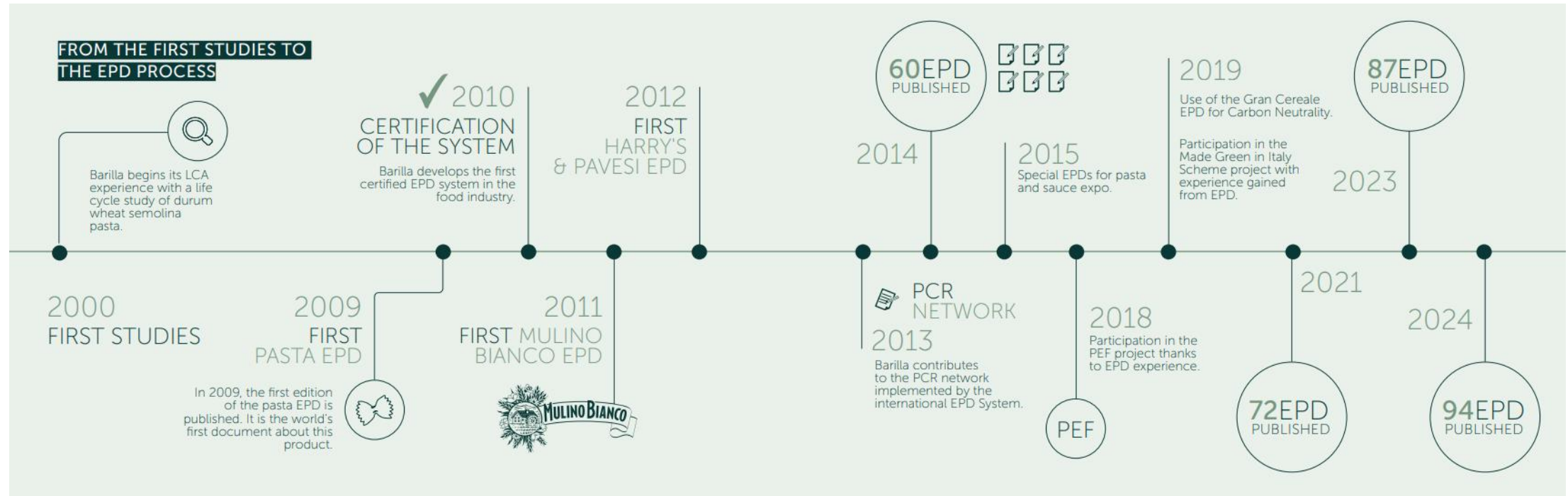
September 13th, 2025



# LCA & EPD TIMELINE



# BARILLA'S EPD JOURNEY





# BARILLA EPD PROCESS SYSTEM THE FIRST IN FOOD SECTOR

Barilla EPD Process System is the first EPD System in Food developed during in 2010 and verified in February 2011.



The first EPD  
system certified  
in the food field

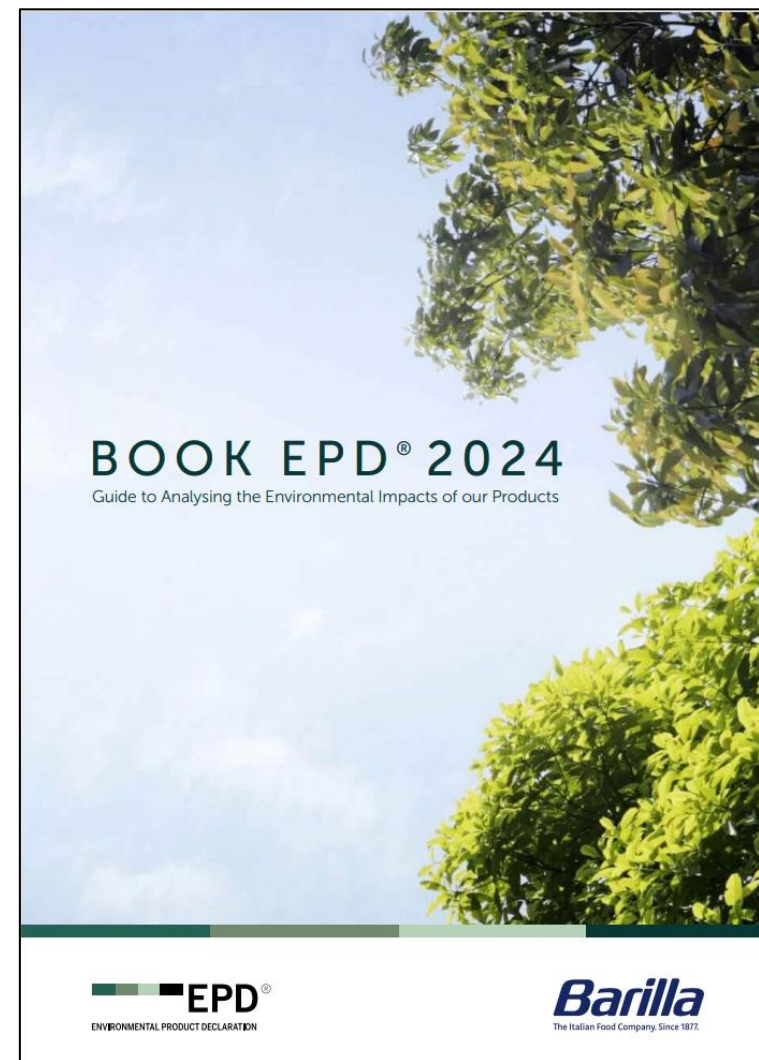
**15 years**  
OF BARILLA EPD PROCESS



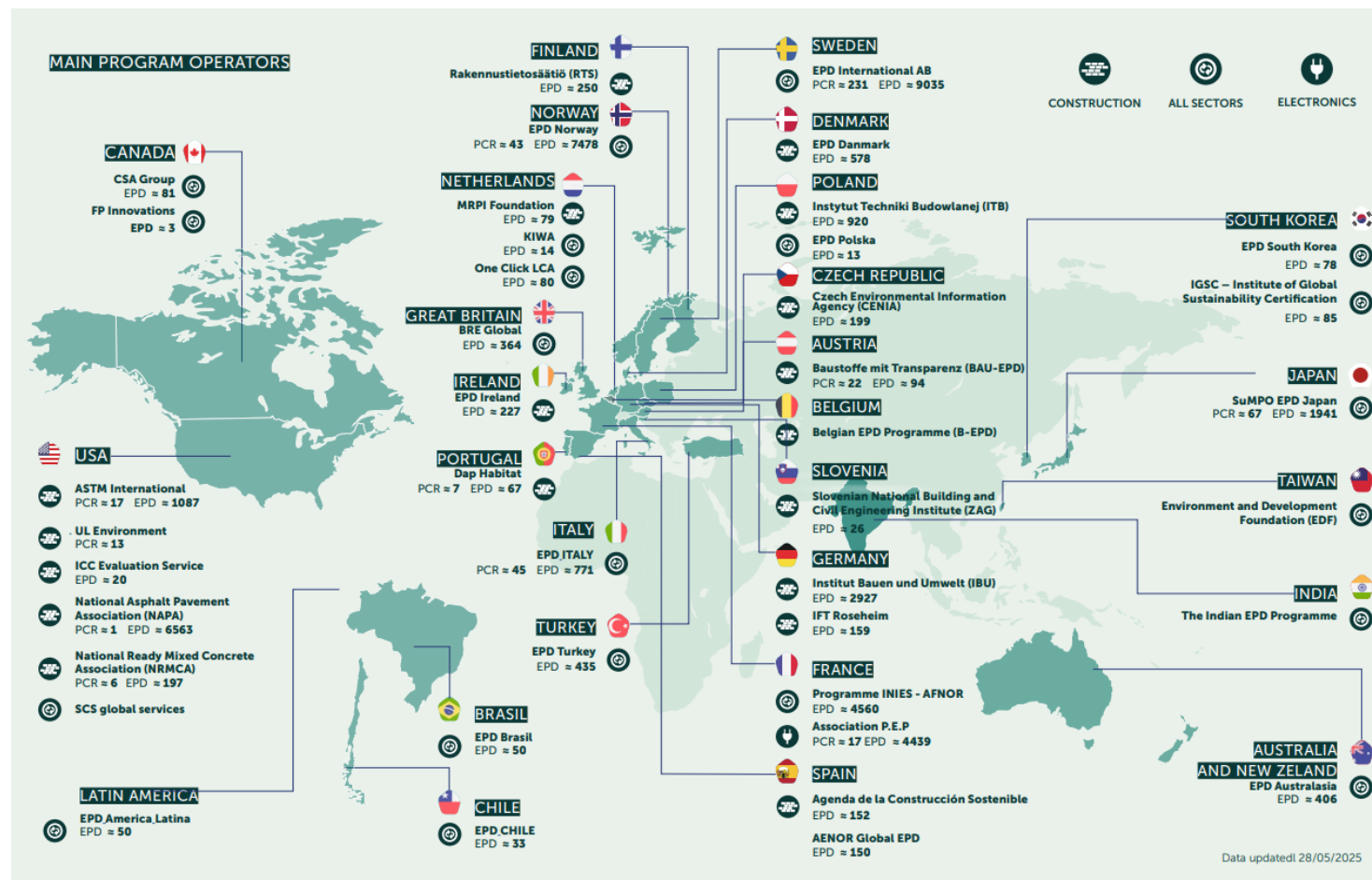
# BARILLA BOOK EPD

Barilla wrote a book that describes the genesis of the Barilla EPD System, its rules, and applications.

By the end of 2025, it will be available on Barilla Corporate website.

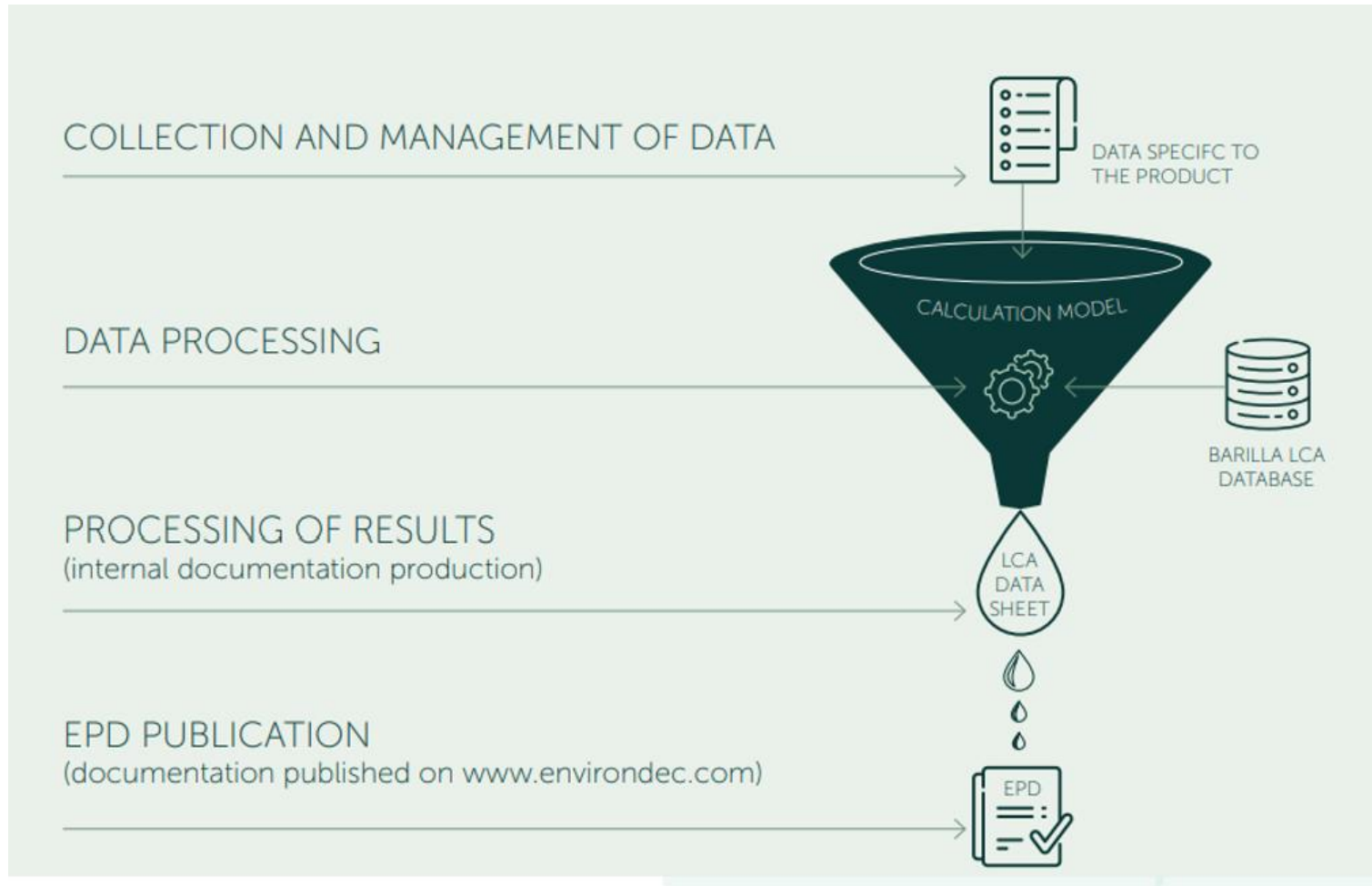


# PROGRAM OPERATORS AROUND THE WORLD

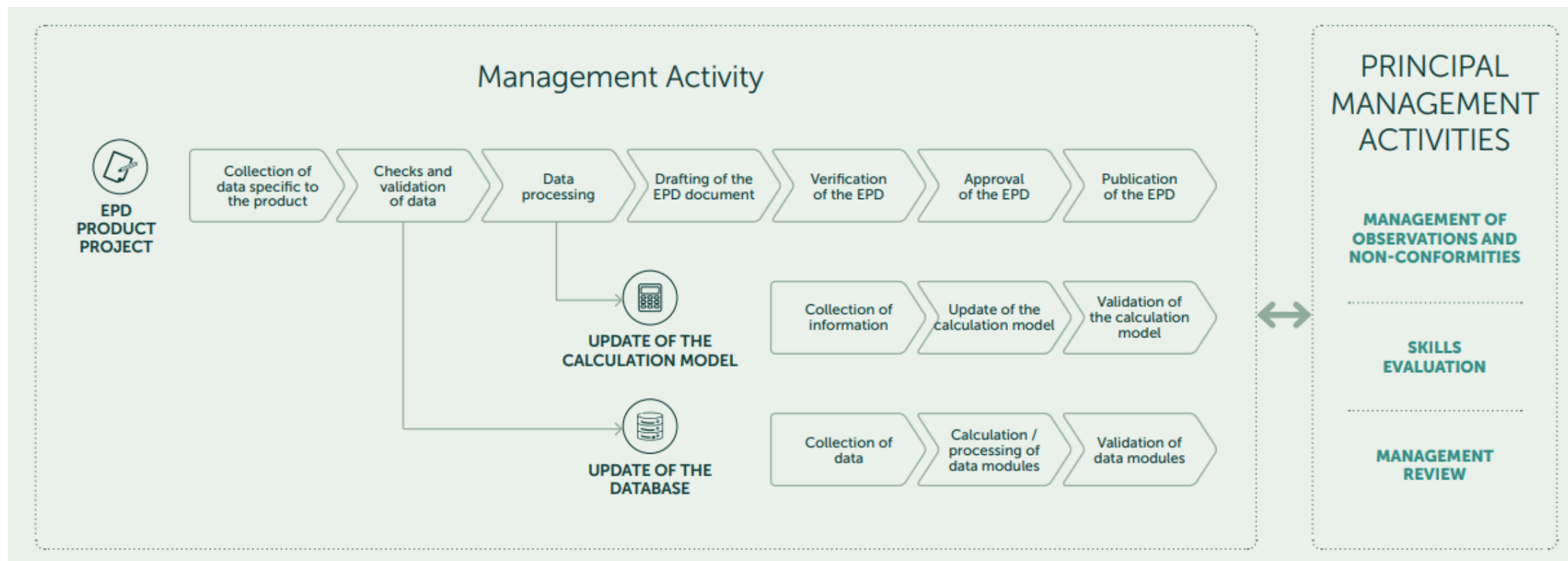




# OUR EPD PROCESS WORKFLOW

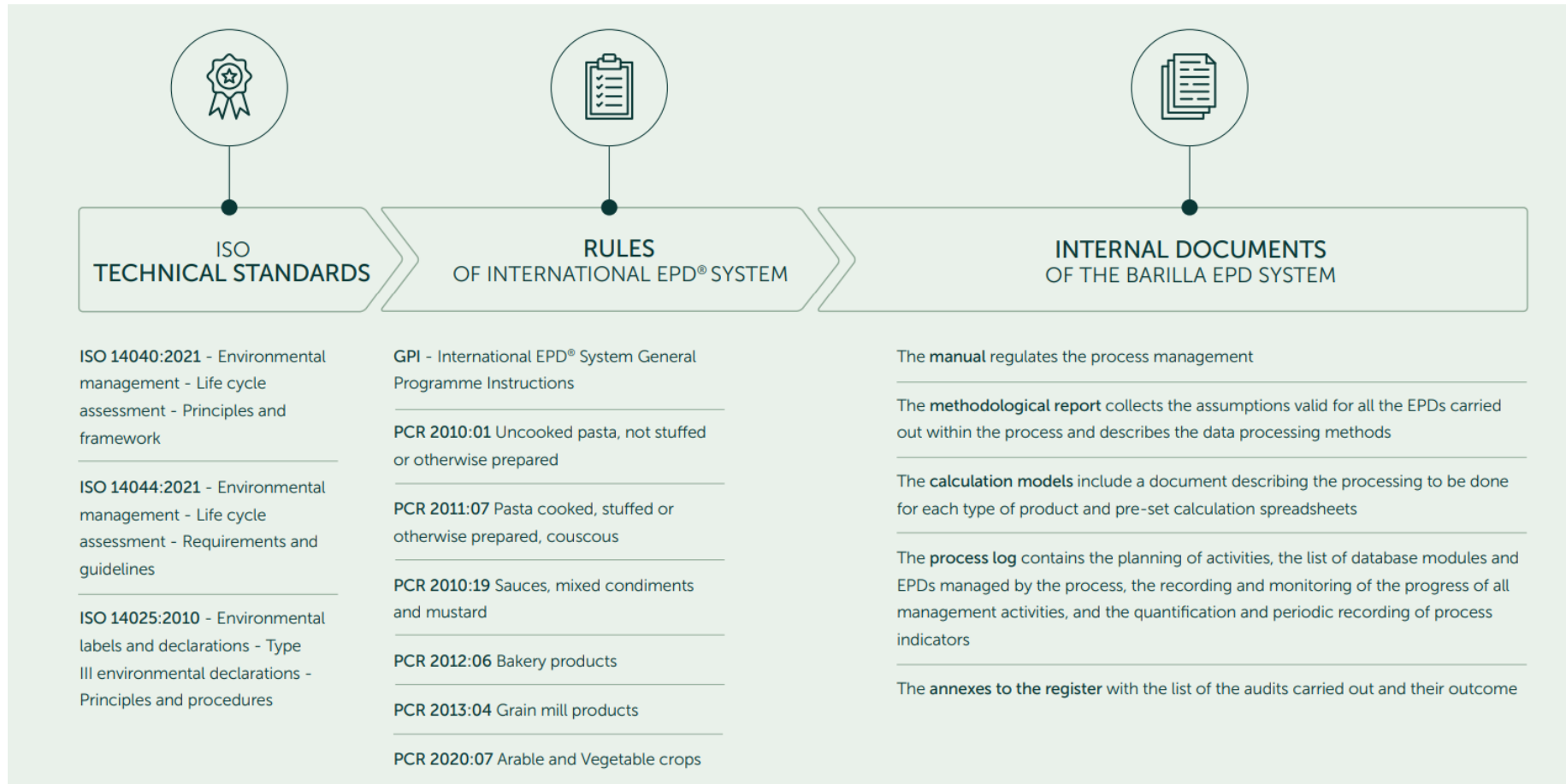


# HOW BARILLA EPD PROCESS SYSTEM WORKS

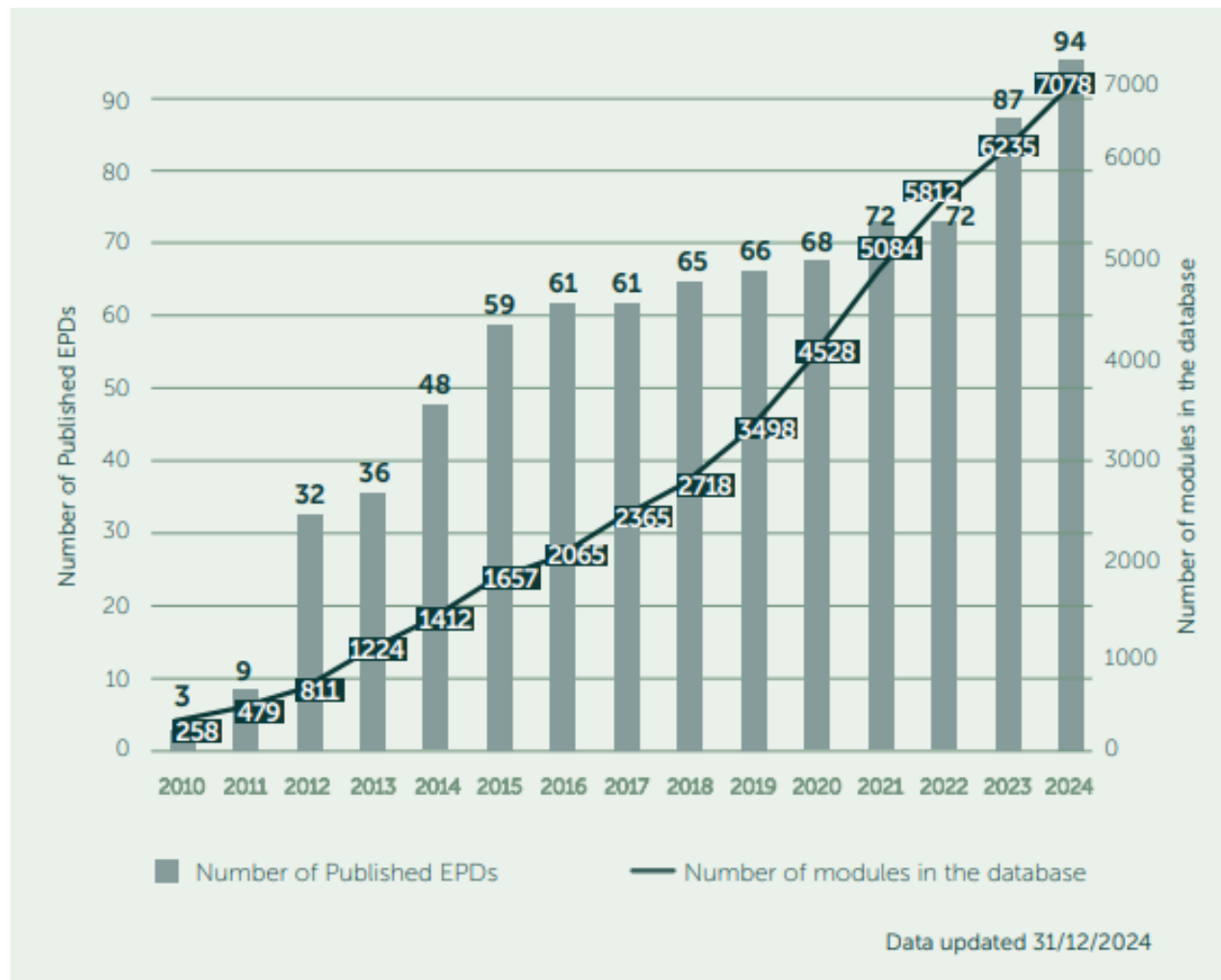




# DOCUMENTS REGULATING THE PROCESS



# PUBLISHED EPDs & DATABASE MODULES





# EPD PROCESS IN NUMBERS

**+90**

ACTIVE EPDs

**+7,000**

OPERATION IN THE DATABASE

**~1,400,000 tons**

OF FINISHED PRODUCT  
COVERED

**+90 PEOPLE**  
INVOLVED IN THE  
PROCESS

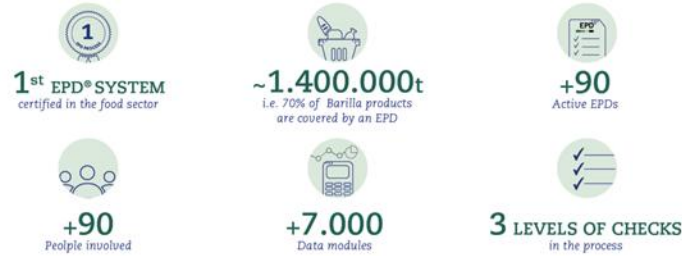
Alfieri Lucia  
Ansel Marlene  
Artur Panis  
Babakhina Anastasiya  
Bellan Martina  
Bertinazzi Laura  
Boeri Fabrizio  
Borla Paola  
Botta Sara  
Bottazzi Oscar  
Brohammer Goran  
Brousseau Serge  
Burlon Davide  
Canali Giacomo  
Cassinotti Sabrina  
Chevalier Denis  
De La Rosa German  
De Nicolo Massimo  
De Pieri Massimo  
De Pisapia Sergio  
Del Regno Martina  
Deon Valeria  
Di Donato Isabella  
Di Giacomo Maria  
Di Leva Sabino  
Falconi Francesca  
Feraboli Davide  
Ferrari Emilio  
Fieschi Maurizio  
Filareto Assunta  
Forest Daniel

Gillard Elodie  
Grosso Actis Giulio  
Hellman Towe  
Hemmerly Ophélie  
Hitesman Derek  
Klack Francesca  
Kotzias Anastasios  
Kubra Aydin  
Lanciotti Oreste  
Landen Camilla  
Loviton Stephane  
Maio Giuseppe  
Marchelli Laura  
Marino Massimo  
Martin Lewin  
Mastrototaro Michela  
Mazzega Francesca  
Mazzola Lorenzo  
Melluso Gaetano  
Merveille Sheila  
Milella Giulia  
Minzoni Ferruccio  
Mirone Leonardo  
Morelli Silvia  
Novelli Riccardo  
O'Rourke Russ  
Perissinotto Valentina  
Peyron Matteo  
Phinero Jean-Paul  
Picchi Gabriele  
Pignatelli Sonia

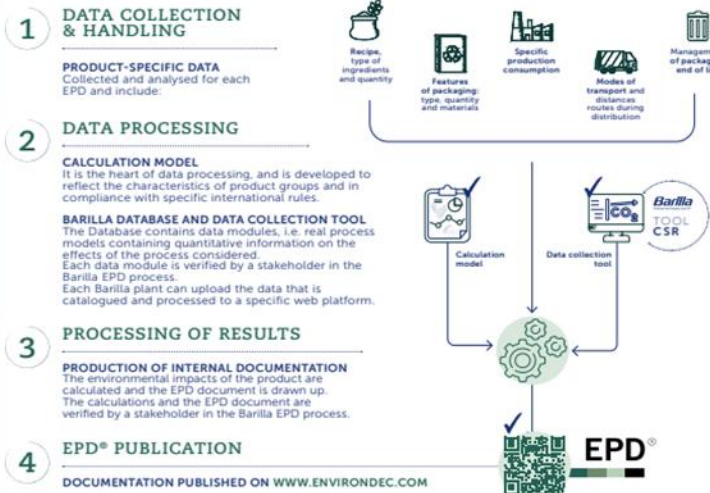
Pini Chiara  
Pocaterra Enrica  
Polverigiani Enrico  
Pretato Ugo  
Rampi Alessandro  
Rapetti Valeria  
Re Roberto  
Redavid Elisabetta  
Rietsch Juliette  
Rillo Elia  
Ronchi Cesare  
Rosa Fabrizio  
Ruini Luca  
Santoni Daniele  
Scarpis Valeria  
Silvestri Marco  
Simone Agostinelli  
Soraci Alessandra  
Soumard Sebastien  
Szulin Elisabetta  
Trolle Lisa  
Valentina Mascotti  
Vasilou Helene  
Verbini Sara  
Visciano Orlando  
Vitullo Claudia  
Wendin Marcus  
Yannis Boucouvalas  
Zerbini Michele  
Zuelich Frank

## EPD® SYSTEM

The Barilla EPD System is a **genuine management system** for the activities required to develop product EPDs, update the Barilla database, create **calculation models** and the operations necessary for the **publication of EPDs**.



### HOW IT WORKS



## CONTENT OF AN EPD®

Environmental Product Declarations (EPDs®) for Barilla products present quantitative information with reference to product characteristics, environmental indicators and the distribution of impacts along the supply chain.

### 1 PRODUCT CHARACTERISTICS

Ingredients and nutritional values are reported similarly to information on the product packaging.



NUTRITIONAL INFORMATION (per 100 g)		
Energy		
Fat		
Carbohydrates		
Fibre		
Protein		
Salt		

### 2 VALUE CHAIN DESCRIPTION

Each EPD presents a **detailed description of the product value chain**, with clear reference to the phases included in the analysis.



### 3 HYPOTHESES & DATA FOR IMPACT CALCULATION

Barilla EPDs dedicate a few pages to the description of the **hypotheses considered** and the **type of data used in the analysis**.



### 4 RESULTS

The most important section of each EPD is dedicated to the **results**, expressed through inventory and environmental impact indicators, which describe **resource consumption**, **waste**, **outflows** from the system and the **effects of the system on the environment**.

	UPSTREAM	CORE	DOWNSTREAM	TOTAL
1 Environmental impact indicators				
2 Use of resources				

### 5 ENVIRONMENTAL PERFORMANCE

Barilla EPDs effectively communicate environmental impacts, including the **three relevant footprints** in agri-food production, with reference to the different **phases of the product life cycle**.



#### CARBON FOOTPRINT

Quantify greenhouse gas emissions that contribute to global warming



#### WATER SCARCITY

Assesses potential for water scarcity, net of the average residual water available after meeting the water demand of humans and ecosystems







## Abbracci

WHAT IS THE ENVIRONMENTAL IMPACT (EPD)  
OF THE ABBRACCI PRODUCED IN ITALY

FIND OUT MORE



FRESH CREAM

COCOA

### CONSUMPTION AND END-OF-LIFE

Packaging designed to be sent  
for separate collection.



### RAW MATERIALS

Abbracci are prepared  
only with carefully  
selected and controlled  
raw materials.



### PACKAGING

The associated  
environmental  
performance was  
evaluated considering  
the 350-gram package.

### DISTRIBUTION

Abbracci are marketed  
mainly in Italy.



### PRODUCTION

Abbracci are produced  
at the Italian plant in Novara.

### ENVIRONMENTAL RESULTS OF ABBRACCI



EPD®  
ENVIRONMENTAL PRODUCT DECLARATION



## Pan Bauletto

WHAT IS THE ENVIRONMENTAL IMPACT (EPD)  
OF PAN BAULETTO

FIND OUT MORE



YEAST

EXTRA VIRGIN  
OLIVE OIL

### CONSUMPTION AND END-OF-LIFE

Packaging designed  
to be sent for separate  
collection.



### RAW MATERIALS

Pan Bauletto is prepared  
only with carefully  
selected and controlled  
raw materials.



### PACKAGING

The associated  
environmental  
performance was  
evaluated considering  
the 400-gram package.

### DISTRIBUTION

Pan Bauletto is  
marketed mainly in Italy.



### PRODUCTION

Pan Bauletto is produced in the Italian  
plants at Cremona and Melfi.

### ENVIRONMENTAL RESULTS FOR PAN BAULETTO



EPD®  
ENVIRONMENTAL PRODUCT DECLARATION





## PESTO ALLA GENOVESE

What is the environmental impact (EPD) of Pesto alla Genovese

FIND OUT MORE



### CONSUMPTION AND END-OF-LIFE

Packaging designed to be sent for separate collection in full, placing the package in the glass and metal collection.



### RAW MATERIALS

Barilla pesto is prepared only with carefully selected and checked raw materials.



### PACKAGING

The associated environmental performance refers to the package containing 400 grams of product.



### DISTRIBUTION

The environmental impacts related to the distribution have been calculated considering the volumes and sales destinations for the Italian market.



### PRODUCTION

Barilla pesto is produced in the Italian plant at Rubbiano.



#### ENVIRONMENTAL RESULTS OF PESTO FOR ITALIAN MARKET



EPD®  
ENVIRONMENTAL PRODUCT DECLARATION



## SPAGHETTI

What is the environmental impact (EPD) of Spaghetti for the Italian market

FIND OUT MORE



### COOKING PHASE

You can reduce the impact of the cooking phase through passive cooking.



### PACKAGING END-OF-LIFE

Packaging designed to be sent for separate collection in full.



### RAW MATERIALS

Barilla Spaghetti are prepared only with carefully selected and controlled raw materials.



### GRINDING

The associated environmental performance was calculated considering the energy and water consumption of the mills at Altamura and Castelplano.



### PACKAGING PRODUCTION

The associated environmental performance was evaluated considering the 500-gram package.



### DISTRIBUTION

Barilla Spaghetti are marketed considering the volumes and destinations of sale for the Italian market.



### VALUE

Barilla Spaghetti are produced at the Marcanise (CE) plant.



#### ENVIRONMENTAL RESULTS FOR 100% ITALIAN WHEAT SPAGHETTI



EPD®  
ENVIRONMENTAL PRODUCT DECLARATION





## EXTRA MOELLEUX Nature

What is the environmental impact (EPD) of Extra Moelleux Nature

FIND OUT MORE



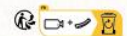
WHEAT FLOUR



OTHER INGREDIENTS:  
RAPESEED OIL

### PACKAGING END-OF-LIFE

Packaging designed to be sent for separate collection, according to the indications reported on the packaging.



### DISTRIBUTION

Extra Moelleux Nature is mainly marketed in France. Environmental performance associated with distribution was assessed using primary data for distances and modes of transport (by truck).



### PRODUCTION OF INGREDIENTS

Extra Moelleux Nature is prepared only with carefully selected and controlled raw materials. The data for the evaluation of the raw materials present in the recipe are provided by Barilla experts and databases (mainly Ecoinvent and Agrifootprint).



### PRODUCTION OF PACKAGING

The environmental performance associated with the packaging production phase was evaluated considering the 500-gram package (best-selling format).



### PRODUCTION OF EXTRA MOELLEUX NATURE

Extra Moelleux Nature is produced in the French plant at La Matherie. The environmental performance of the production process was evaluated by considering the primary data relating to the plant's energy and water consumption and waste production.



### ENVIRONMENTAL RESULTS FOR 'EXTRA MOELLEUX NATURE'



The data and images shown refer to the environmental and production results for the year 2023. The results of the indicator "Potential for water depletion" are reported here as "water scarcity footprint".



## WASA RÅGI

WHAT IS THE ENVIRONMENTAL IMPACT (EPD) OF WAGA RÅGI

FIND OUT MORE



SALT, YEAST



WHOLEMEAL RYE FLOUR, RYE FLOUR

### PRODUCTION OF INGREDIENTS

Rågi is prepared only with carefully selected and controlled raw materials. The data for the evaluation of the raw materials present in the recipe are provided by Barilla experts and databases (mainly Ecoinvent and Agrifootprint).



### PRODUCTION OF PACKAGING

The environmental performance associated with the packaging production phase was evaluated considering the 275-gram package (the one that keeps the best).



### RÅGI PRODUCTION

Rågi is produced at the Swedish plant in Filipstad. The environmental performance of the production process was evaluated by considering the primary data relating to the plant's energy and water consumption and waste production.



### ENVIRONMENTAL RESULTS FOR RÅGI



The data and images shown refer to the environmental and production results for the year 2023. The results of the indicator "Potential for water depletion" are reported here as "water scarcity footprint".

