

Mooie maatregelen

GROUP A 

Ontwerp

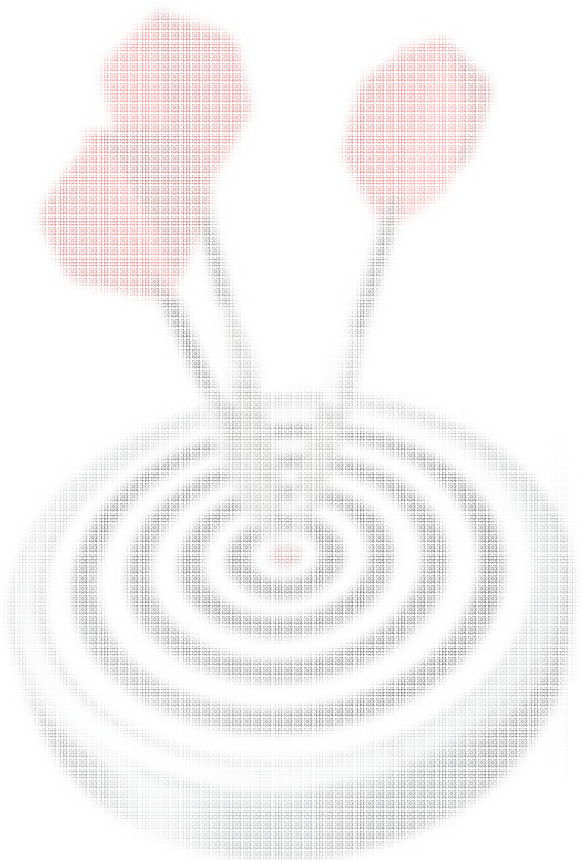
VEILIGE OMGEVING

Relevant - 24 november 2016

Folkert van Hagen - Group A Architects

Alex de Roos - Ontwerp Veilige Omgeving





Maatregelen worden pas achteraf opgelegd als het stedenbouwkundig ontwerp al helemaal is klaar is ...



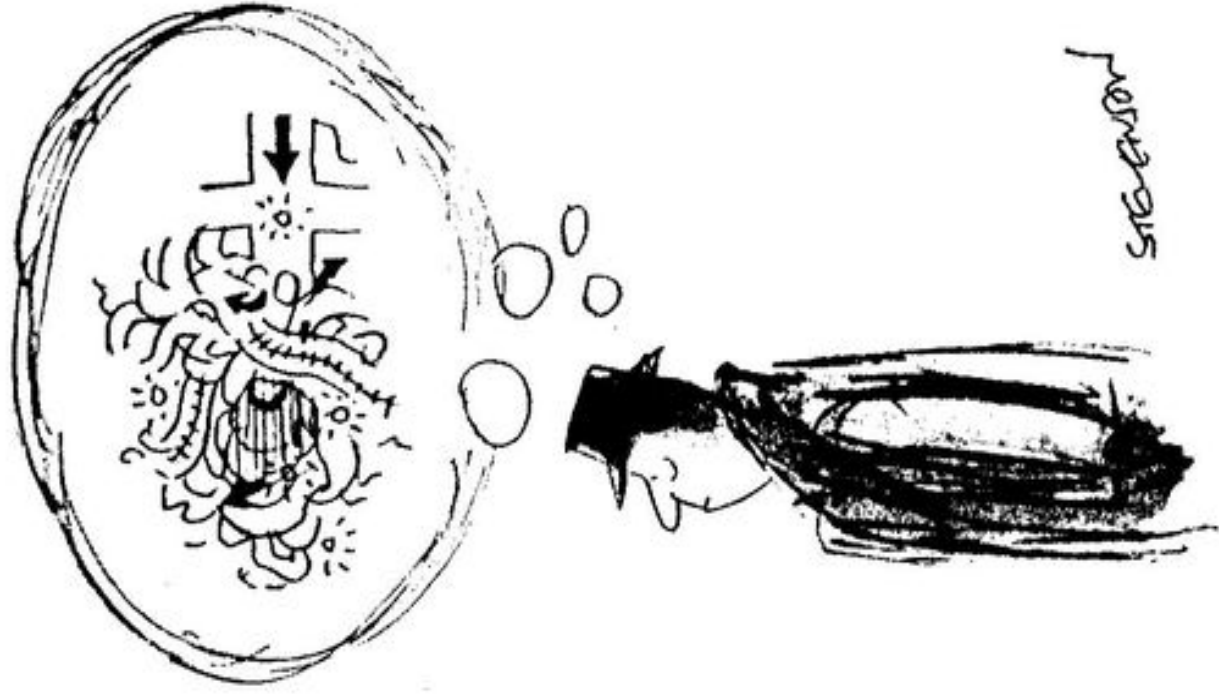
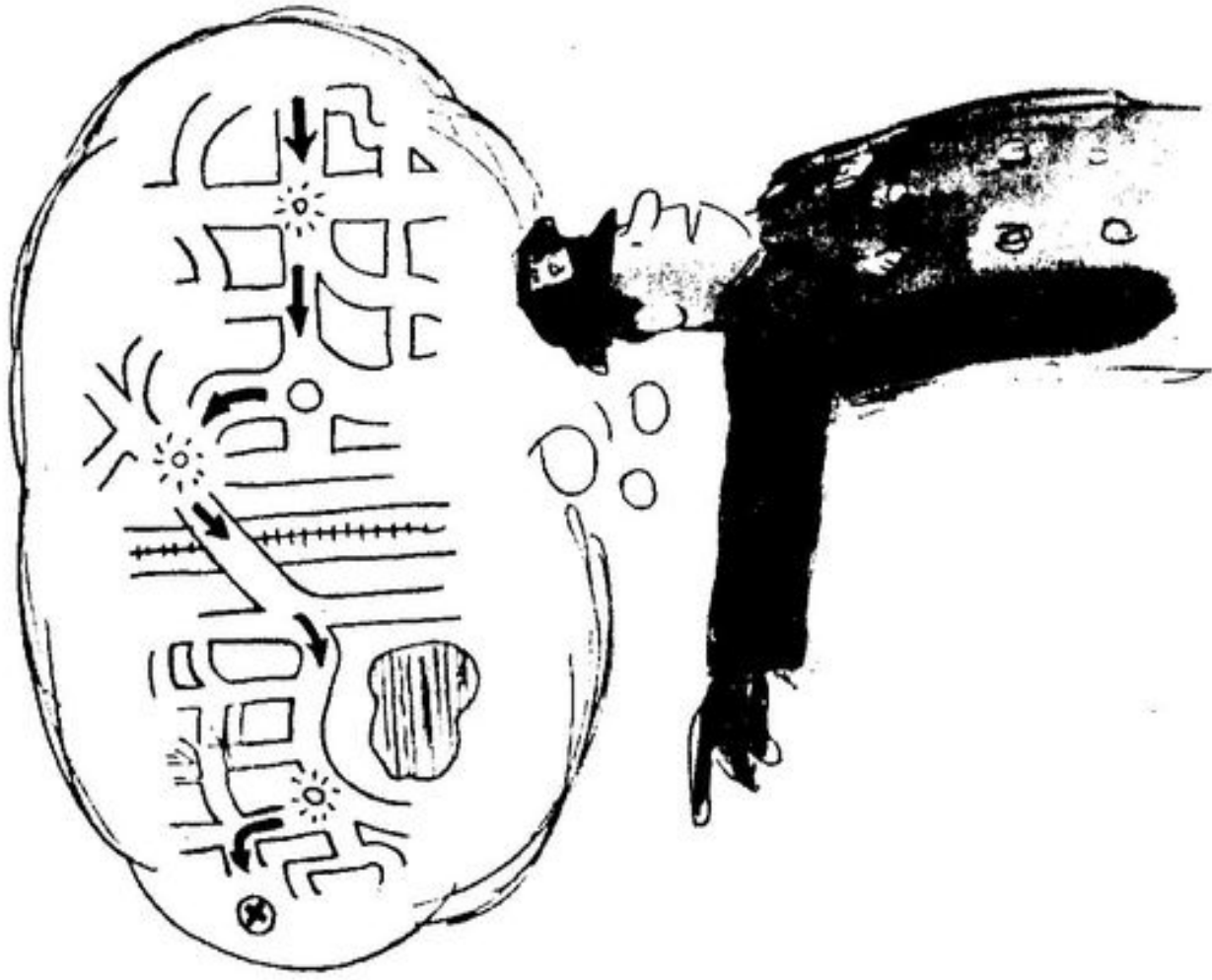
... in plaats van dat ze vooraf als ontwerpvariabelen worden meegegeven!



Ontwerp

VEILIGE OMGEEVING





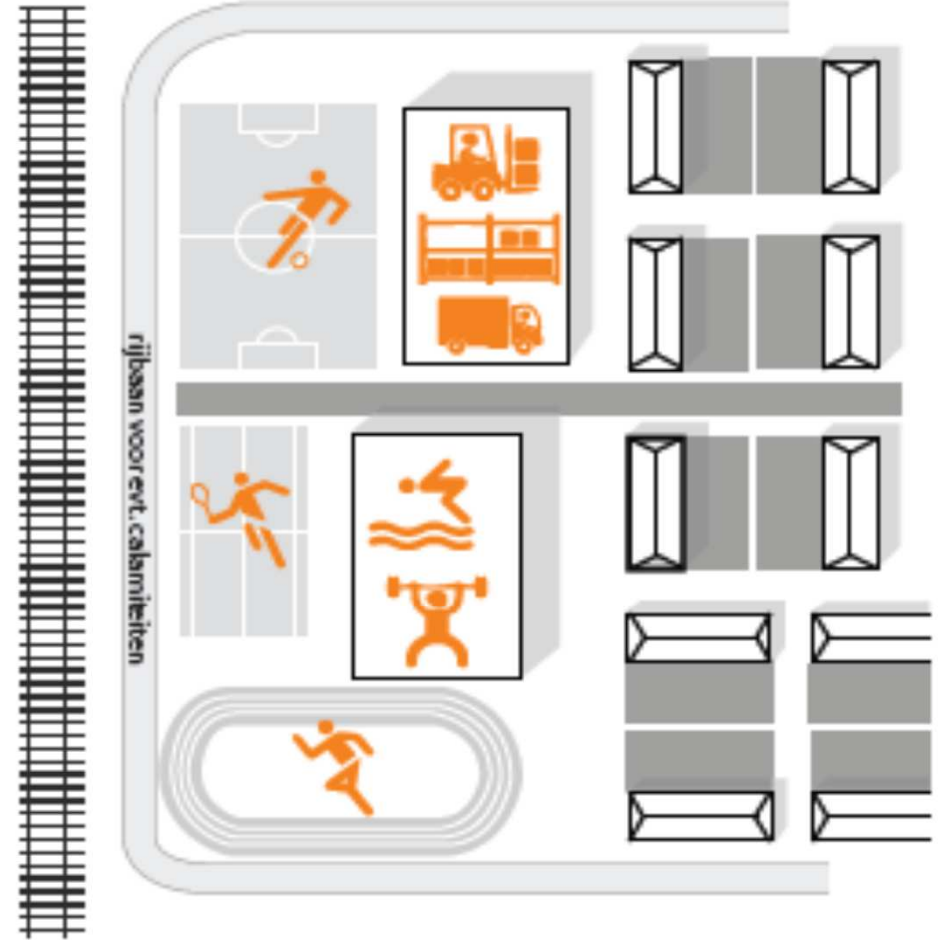
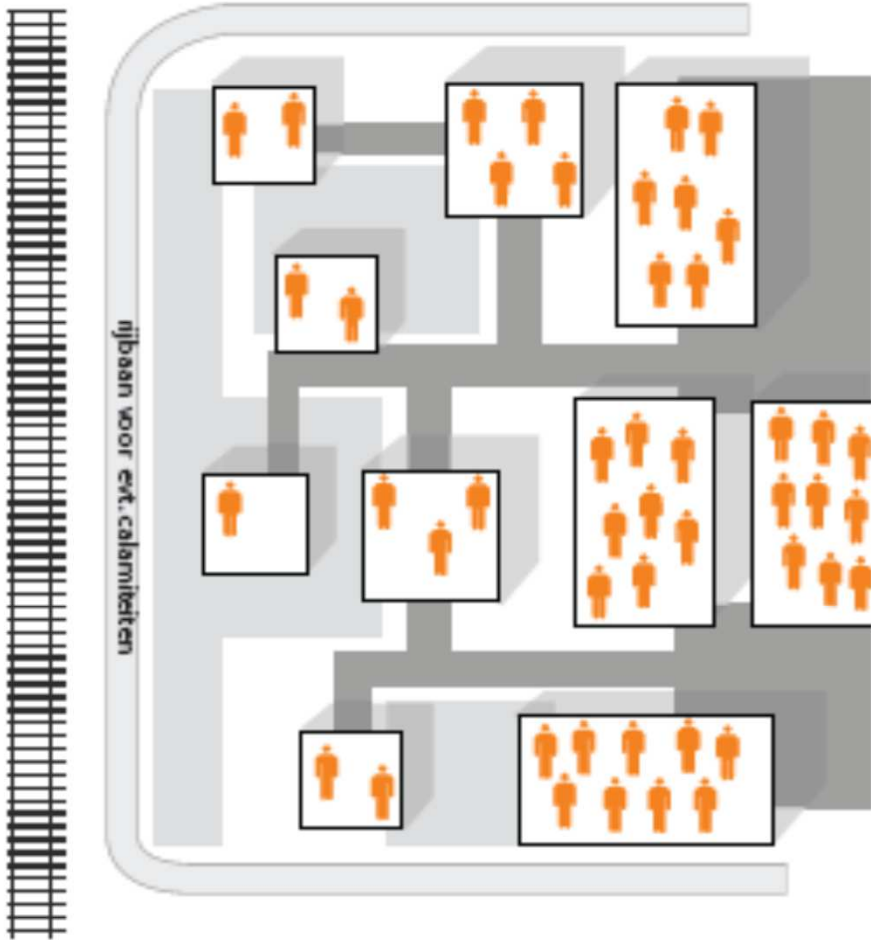
STEVENSON

Drawing by Stevenson; © 1976 The New Yorker Magazine, Inc.



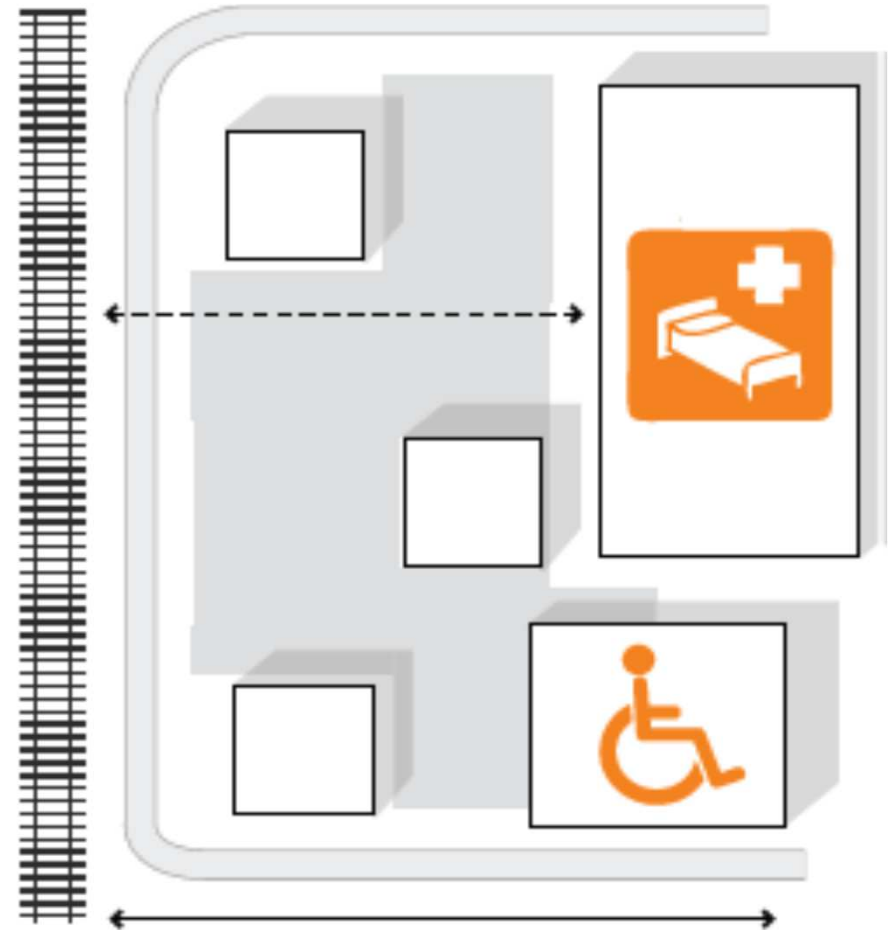
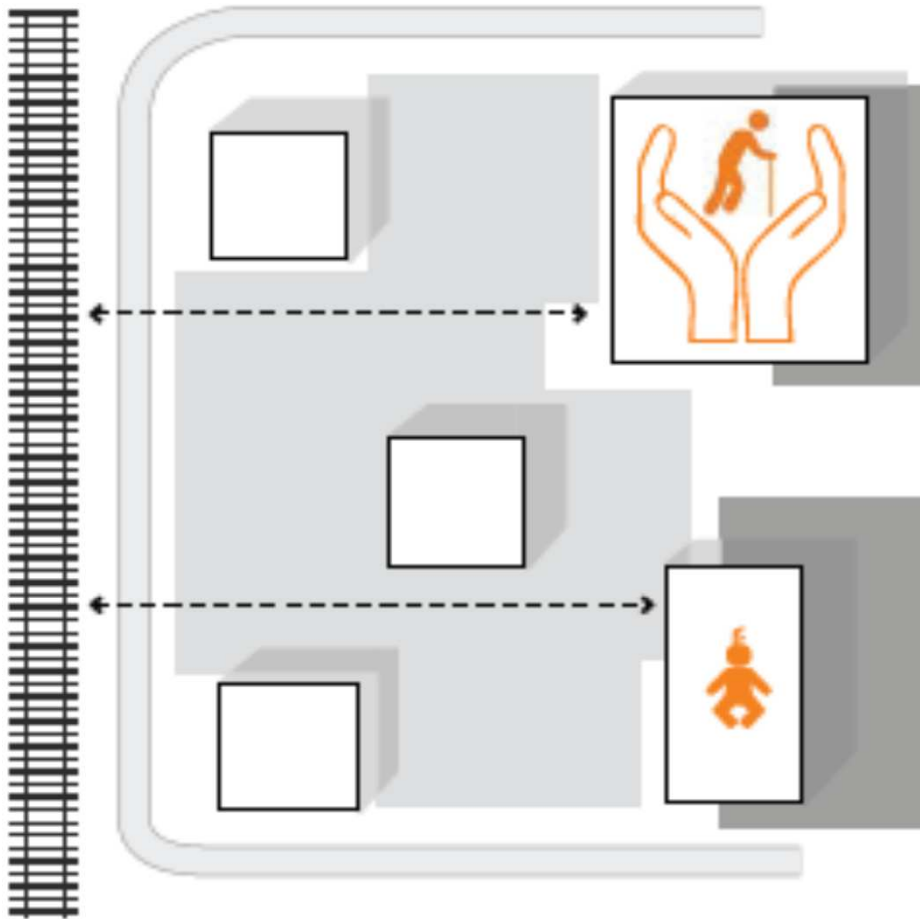


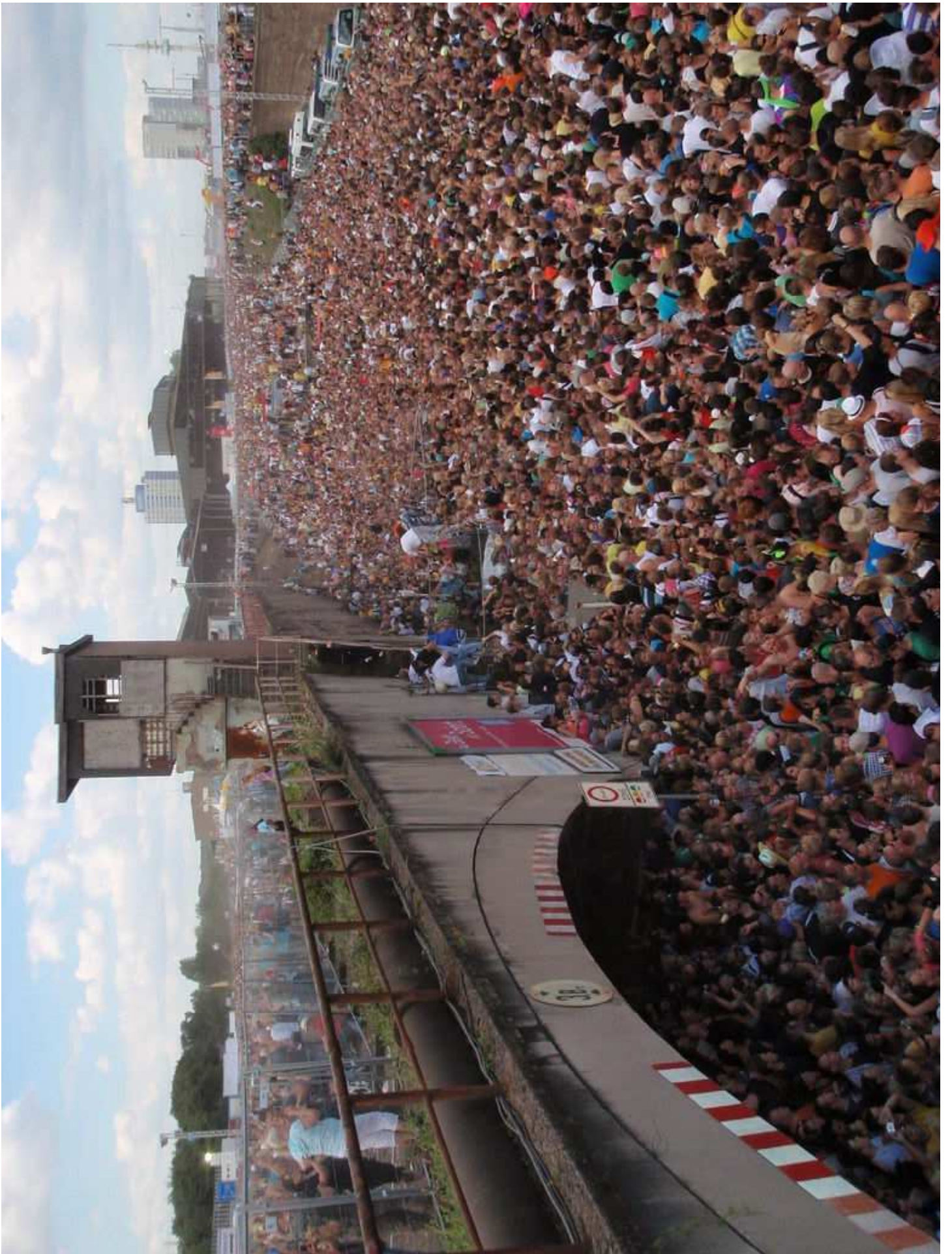
Afstand & dichtheid





Kwetsbare groepen

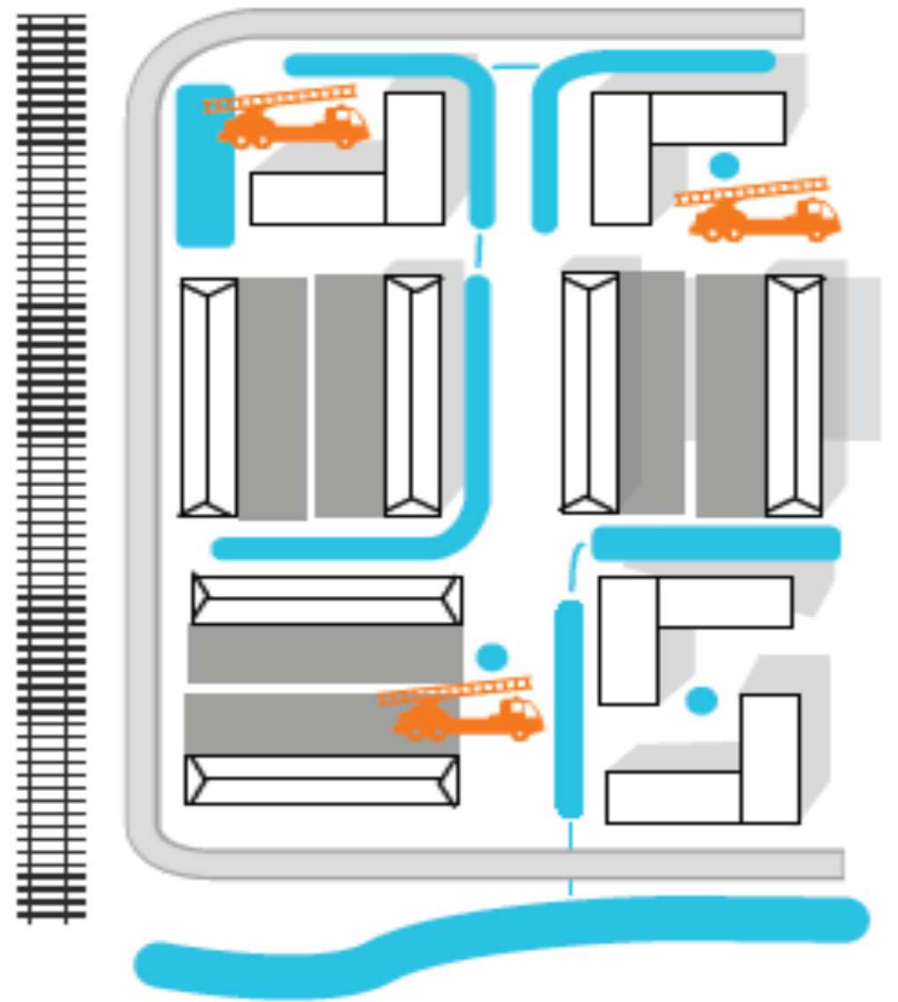
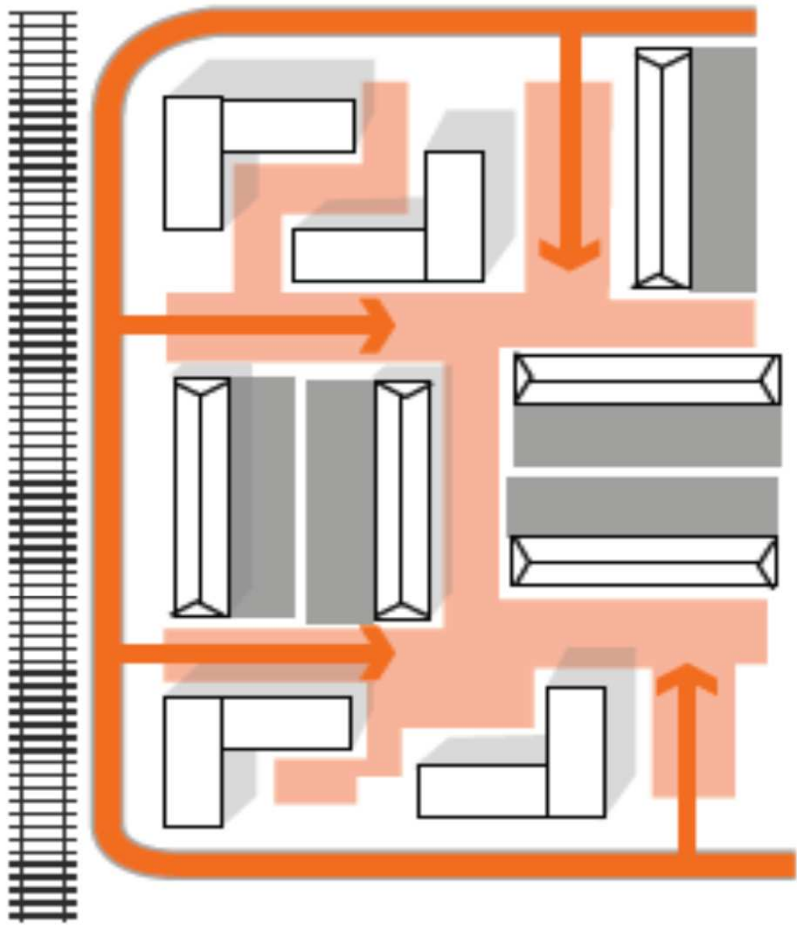






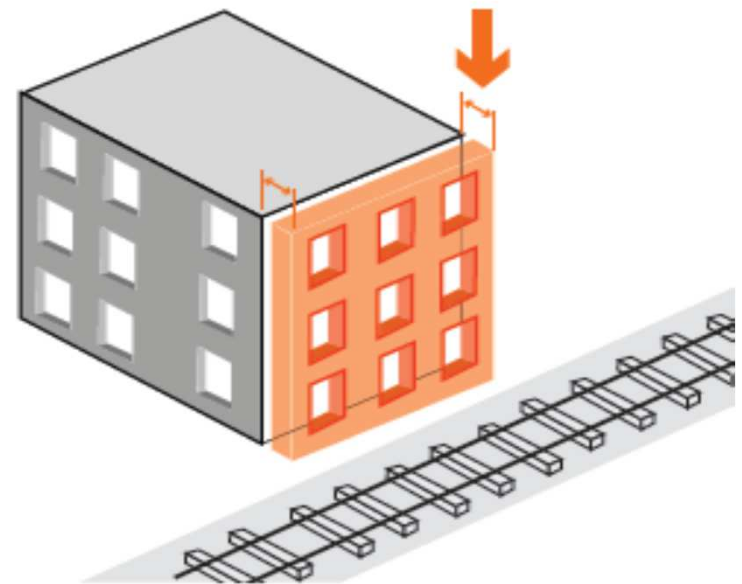
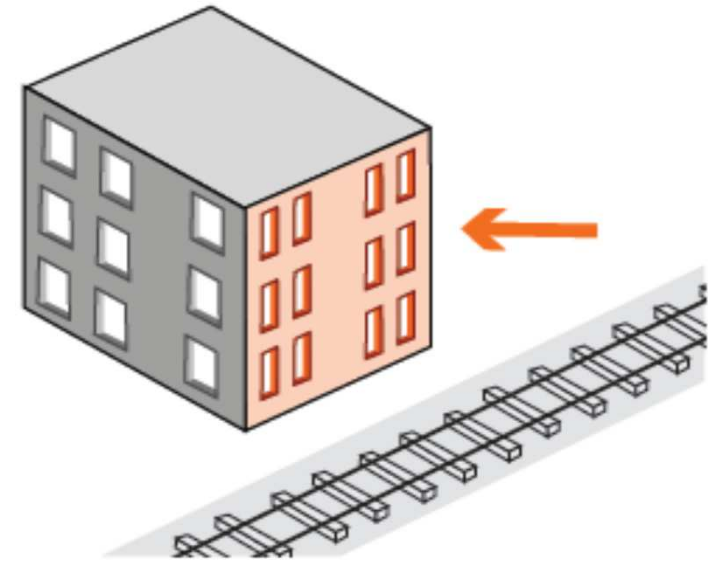
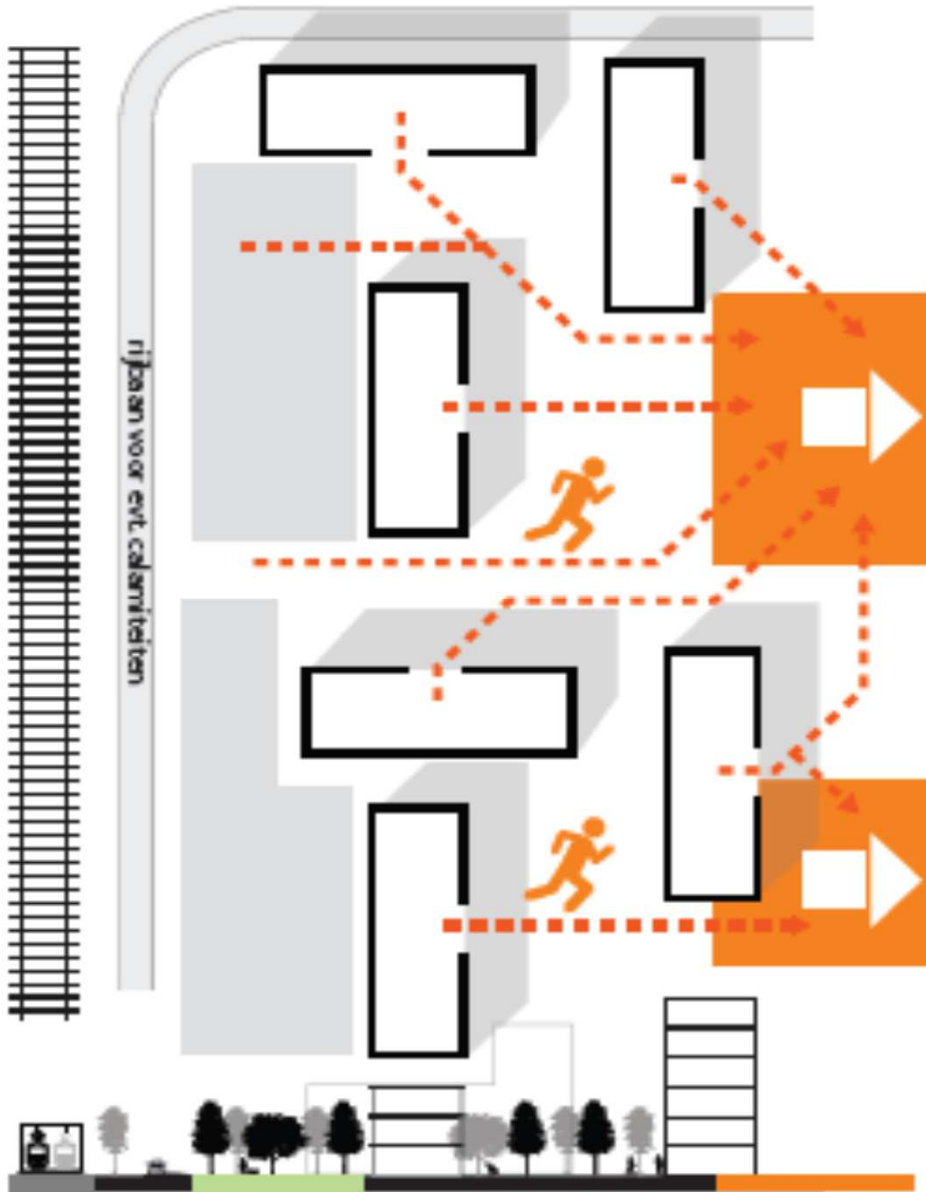


Bestrijding & hulpverlening





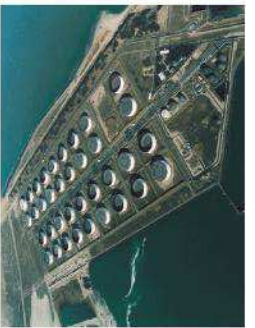
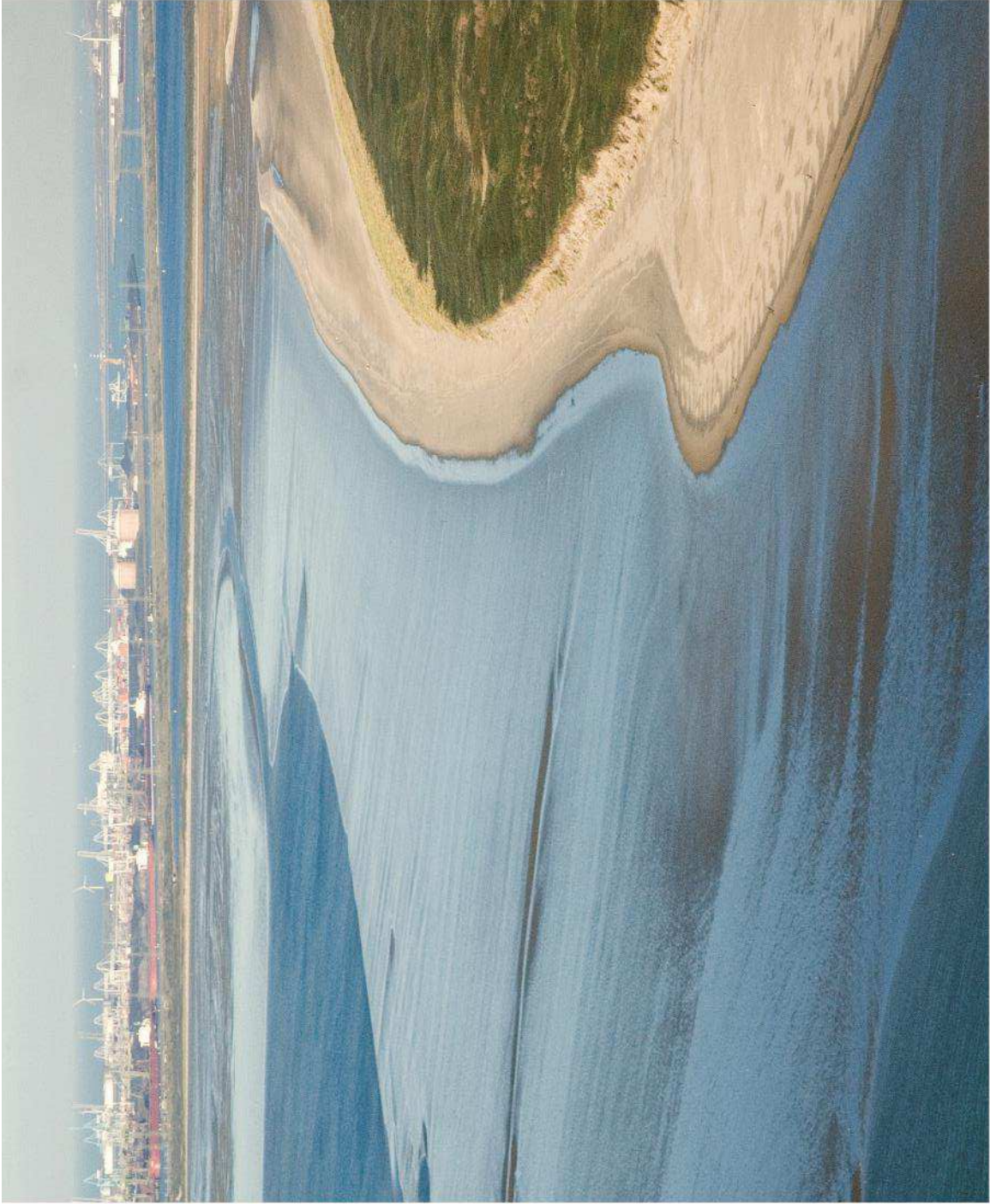
Vluchten & schuilen



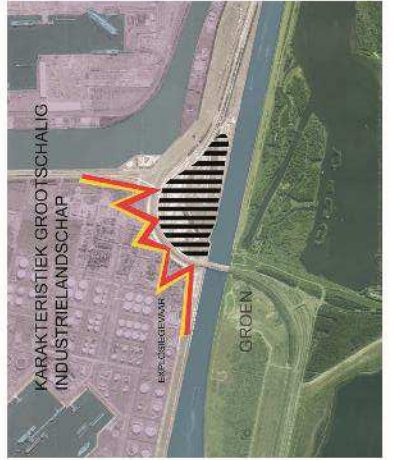
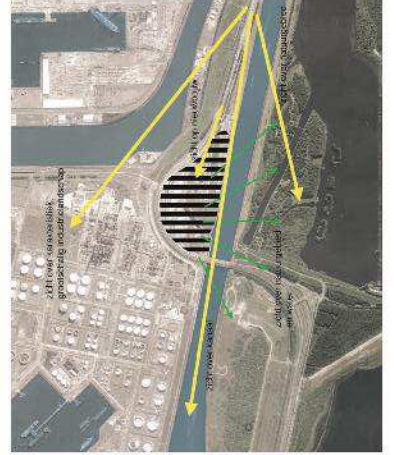


PUBLIEKSWINNAAR
ROTTERDAM
ARCHITECTUURPRIJS
2011

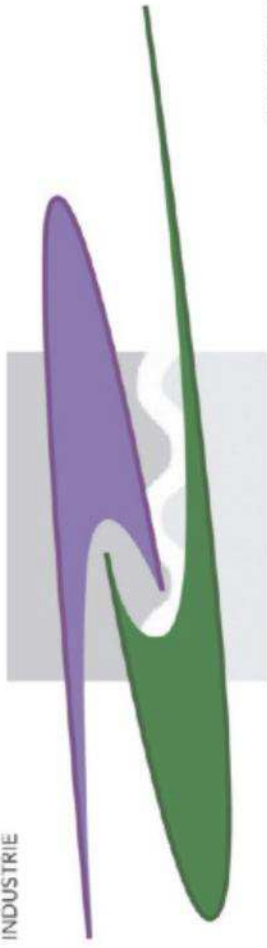






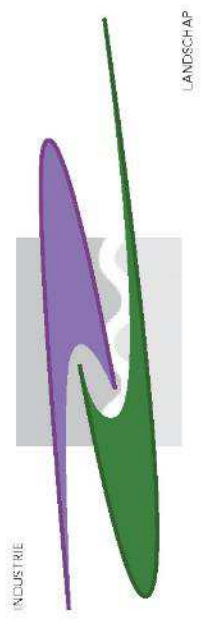
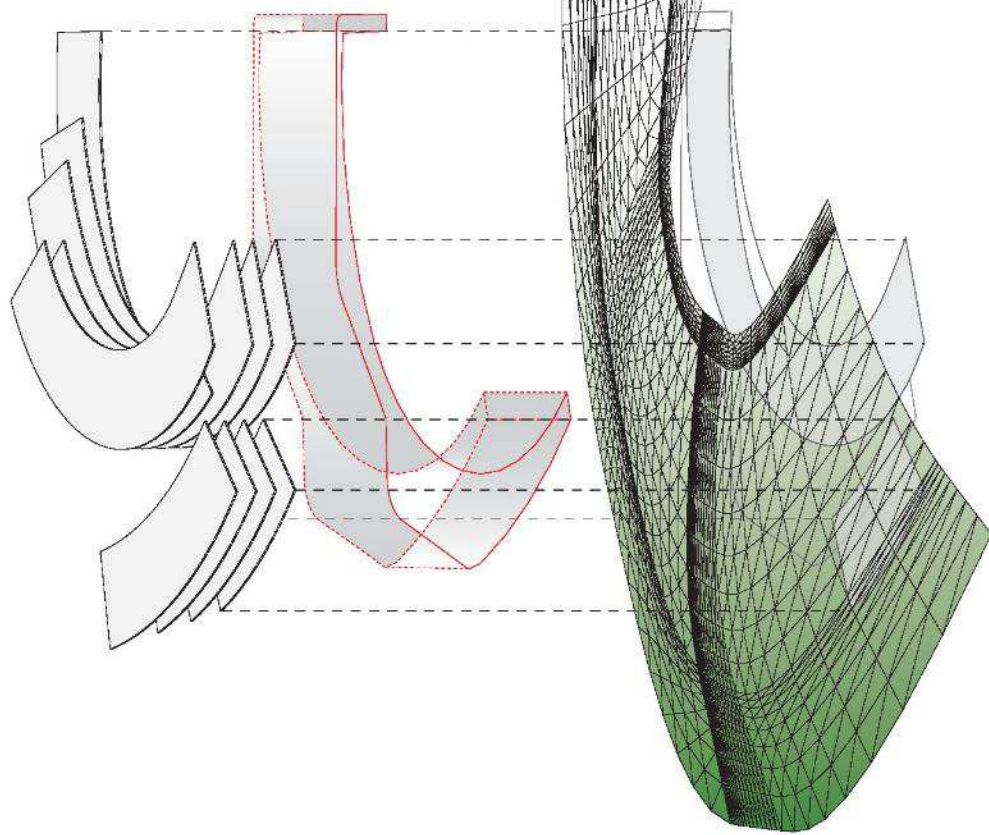


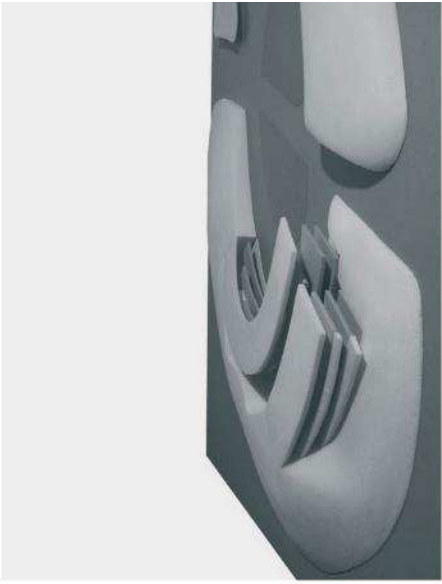
INDUSTRIE



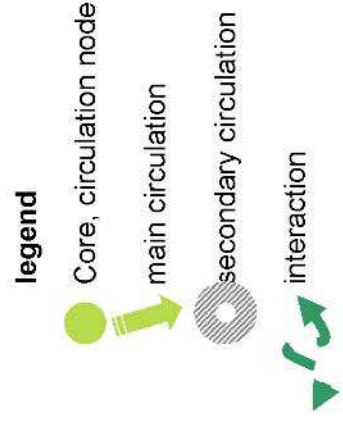
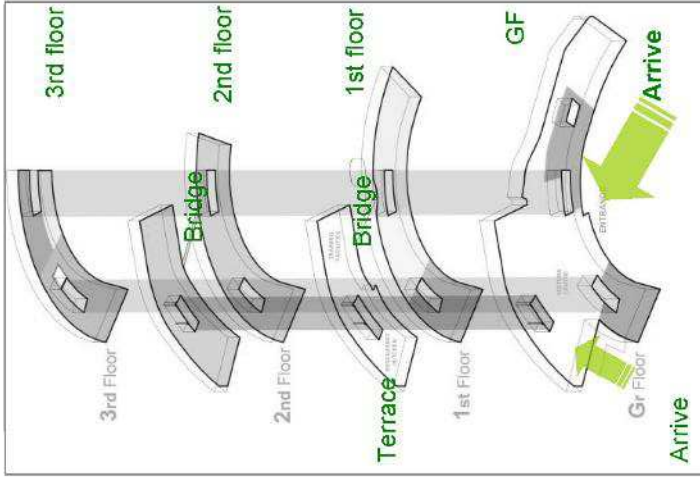
LANDSCHAP



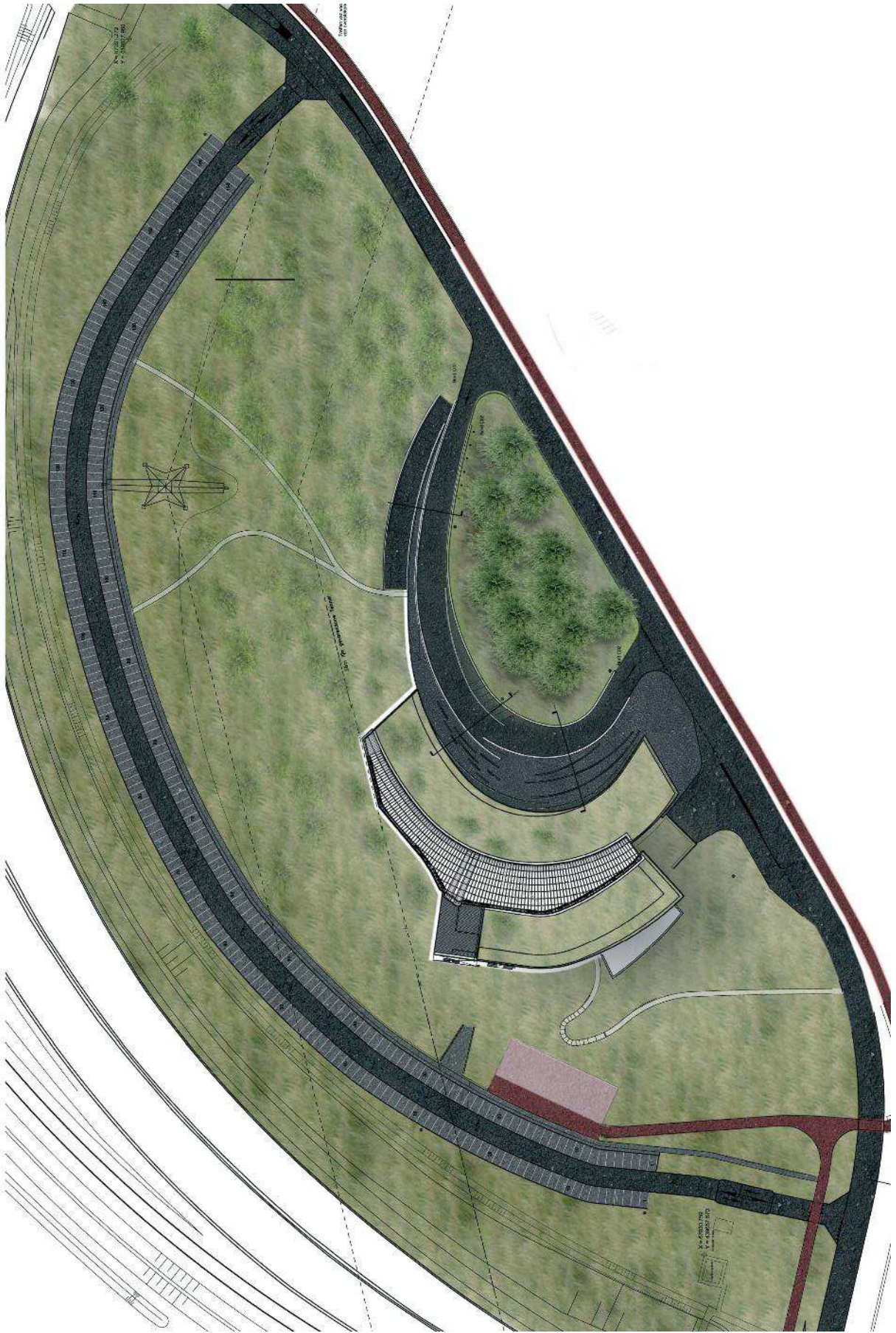








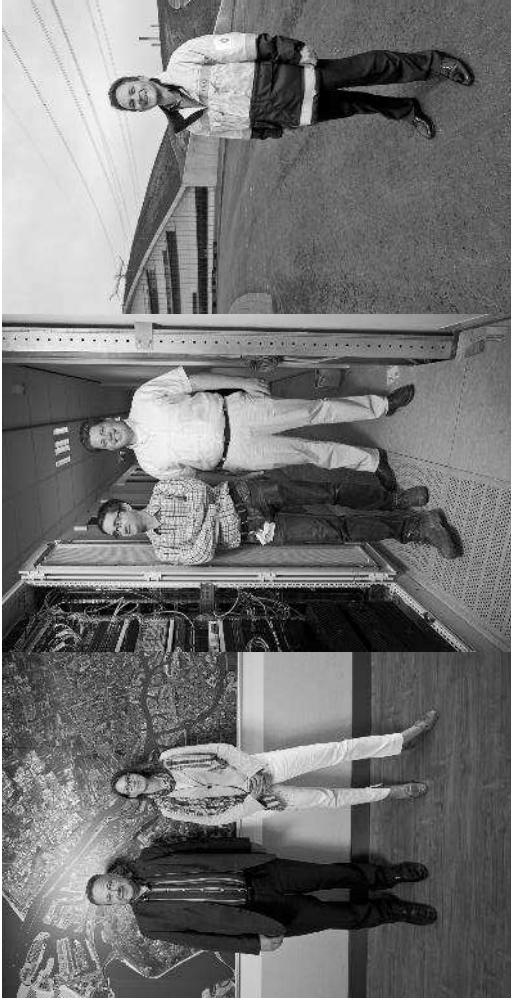






Uiteindelijk
225.000 uren
gewerkt
zonder recordable
incidents





C

E

H

E

I

N



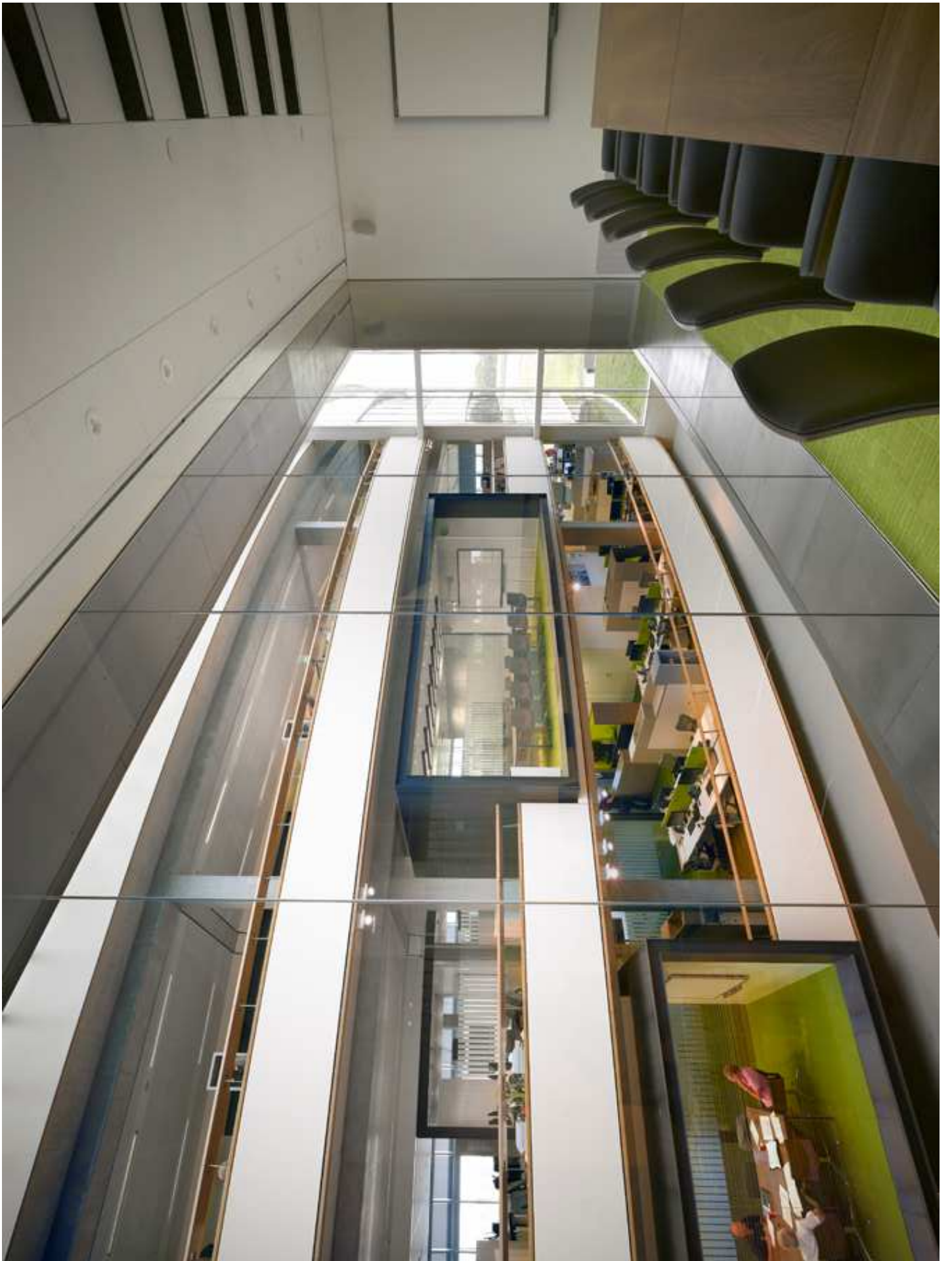




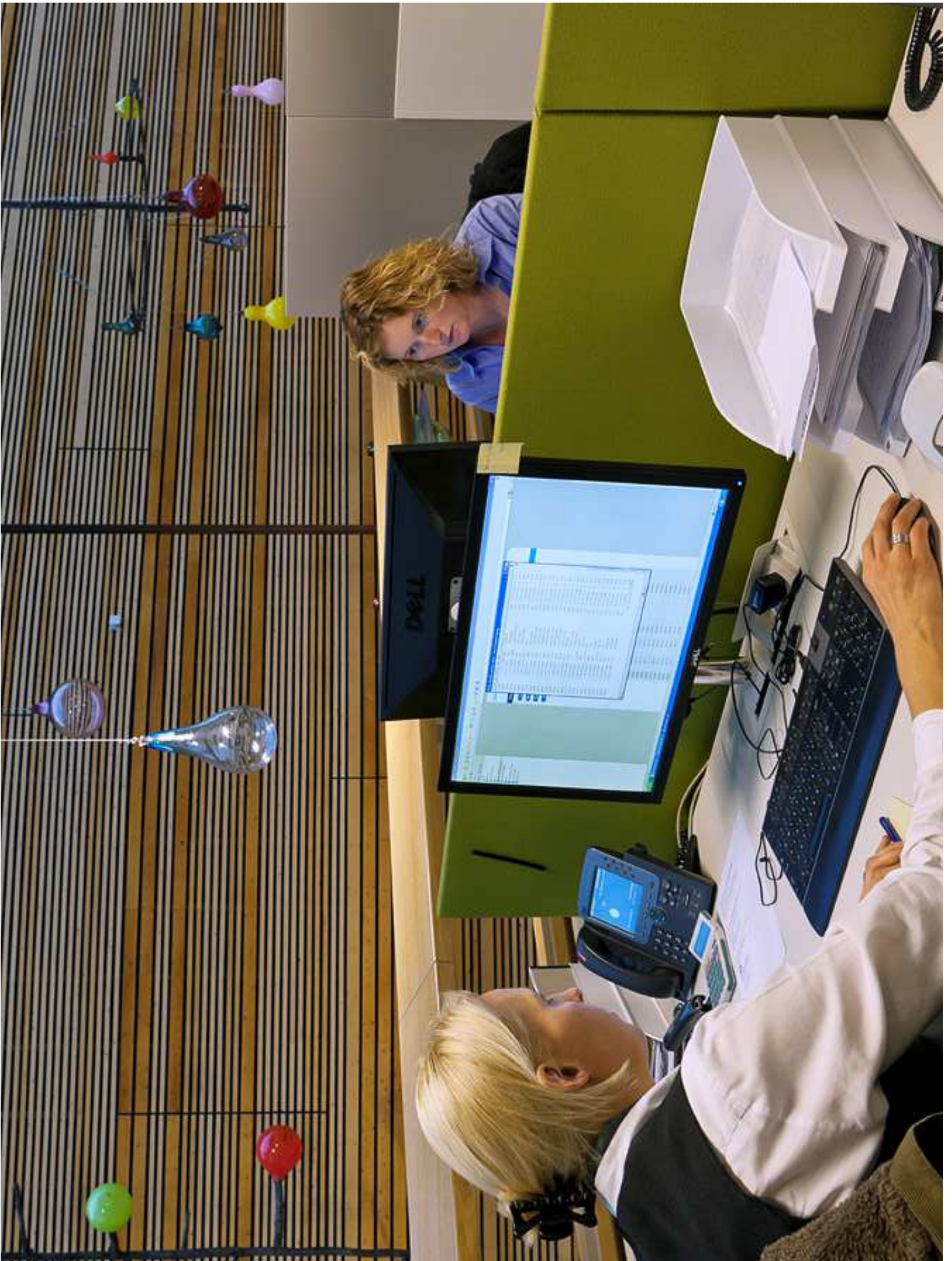














Wederzijds
begrip

Respect

Durf van elkaar te leren

Wees proactief

Er is maar 1 doel, een goed gebouw