

Calculation Notes:
 The calculation is done with the assumption of surface reflectance value @ 20% and light-loss factor (LLF) 0.9.
 The calculation does not consider the following elements:
 Site:
 - Planters
 - Curbs
 - Natural day light
 - Shrubs & Plants
 - Openings
 - Signs
 - Other vertical extrusions and elevations than finished floor/walls and privacy fence around the building site

Calculation is done with IES files provided by manufacturers.
 Calculation is done without any other lighting contribution than the ones listed in the luminaire schedule shown on the calculation sheet.
 Calculation points in on a 3ft by 3ft grid for walkway.
 All lighting devices shall be full cut off and night sky friendly, and shall be mitigated at the source so that no light (0.0 lux) will be directly projected onto adjacent properties.
 Efficient exterior lighting providing adequate illumination for safety and security will be incorporated into the design. Luminaires to be full cutoff and prevent glare discomfort and/or light trespass onto neighboring properties. There will be no exterior uplighting.

LANDSCAPE ALLOWANCE:
ALL SITE LIGHTING/ EXTERIOR LIGHTING TO BE CONTROLLED BY PHOTOCELL 'ON/TIMECLOCK 'OFF' COMBINATION.
ANY ROOFTOP AND FACADE ARCHITECTURAL ILLUMINATION TO BE PROGRAMMED TO TURN OFF BETWEEN 11PM AND 6AM (INCLUDING AMENITY TERRACES) DURING BIRD MIGRATORY SEASON ON A SEPARATE TIME CLOCK.
CONFIRM SITE LIGHTING WITH ARCHITECT/ LANDSCAPE ARCHITECT.
E.C. IS TO ALLOW FOR 500 FT. OF 1" CONDUIT C/W 14#18R90 FOR IRRIGATION STUB POINTS TO LATER DETAIL.



TYPE 'BB'



TYPE 'DD, DD1'



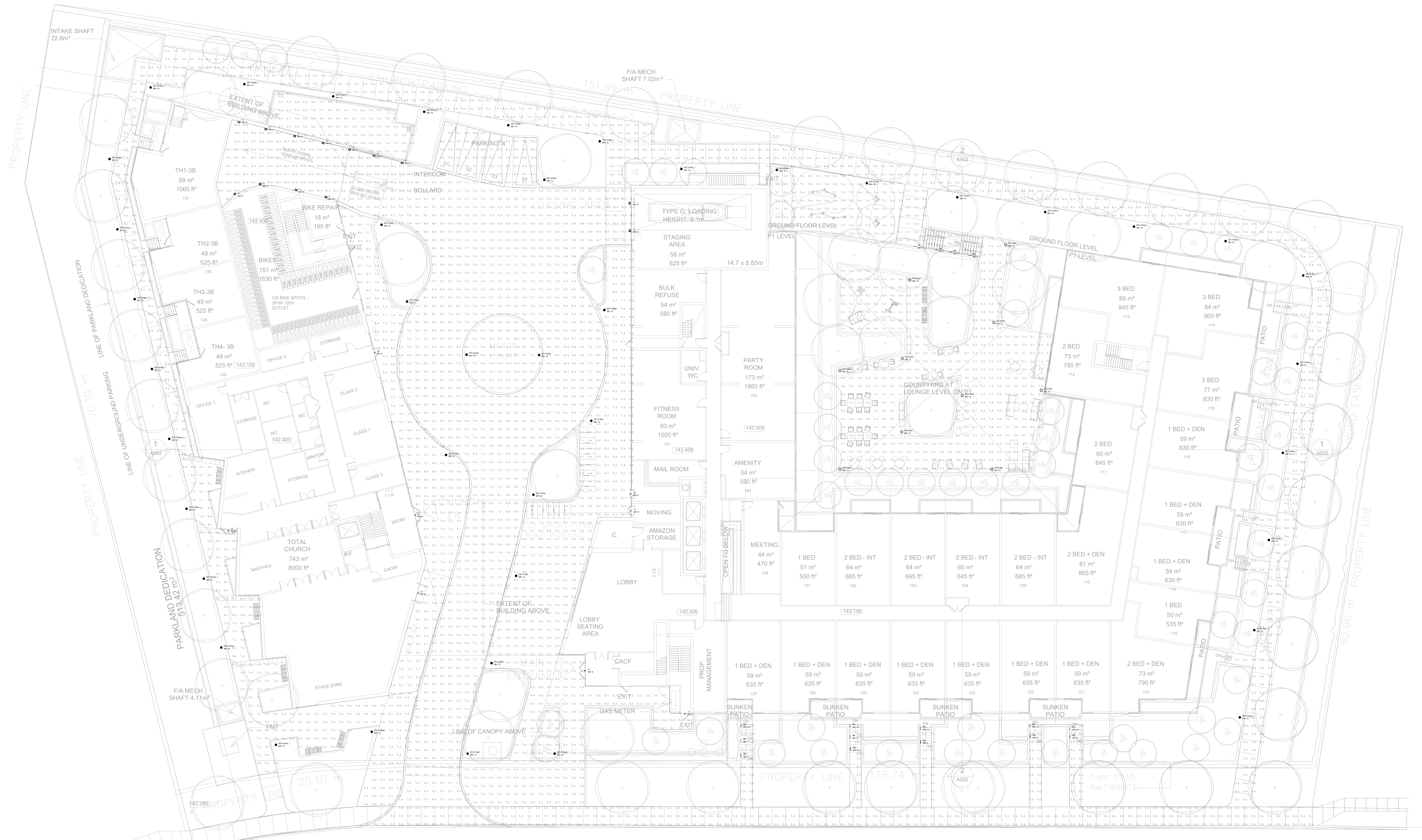
TYPE 'HH'



TYPE 'JJ'



TYPE 'LL'



Calculation Notes:
 The calculation is done with the assumption of surface reflectance value @ 20% and light loss factor (LLF) 0.9.
 The calculation does not consider the following elements:

- Site:
- Planters
 - Curbs
 - Natural day light
 - Shrubs & Plants
 - Openings
 - Slops
 - Other vertical extrusions and elevations than finished floor/walls and privacy fence around the building site

Calculation is done with IES files provided by manufacturers.
 Calculation is done without any other lighting contribution than the ones listed in the luminaire schedule shown on the calculation sheet.
 Calculation points are on 3 ft by 3 ft grid for walkway.

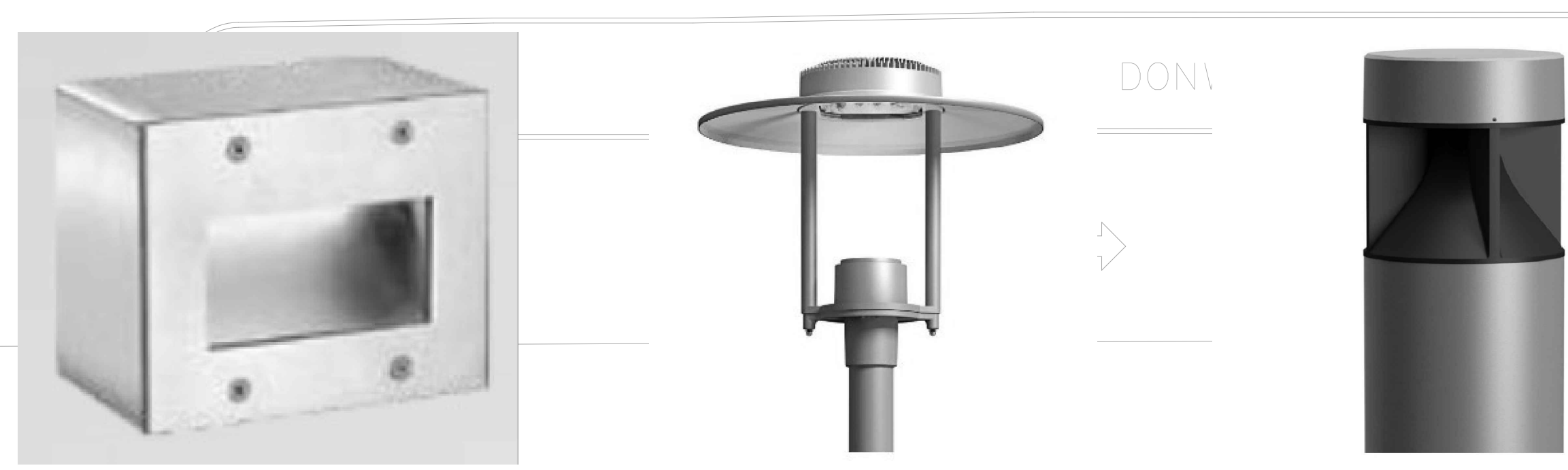
All lighting devices shall be full cut off and night sky friendly, and shall be mitigated at the source so that no light (0.0 lux) will be directly projected onto adjacent properties.

Efficient exterior lighting providing adequate illumination for safety and security will be incorporated into the design. Luminaires to be full cutoff and prevent glare discomfort and/or light trespass onto neighboring properties. There will be no exterior uplighting.

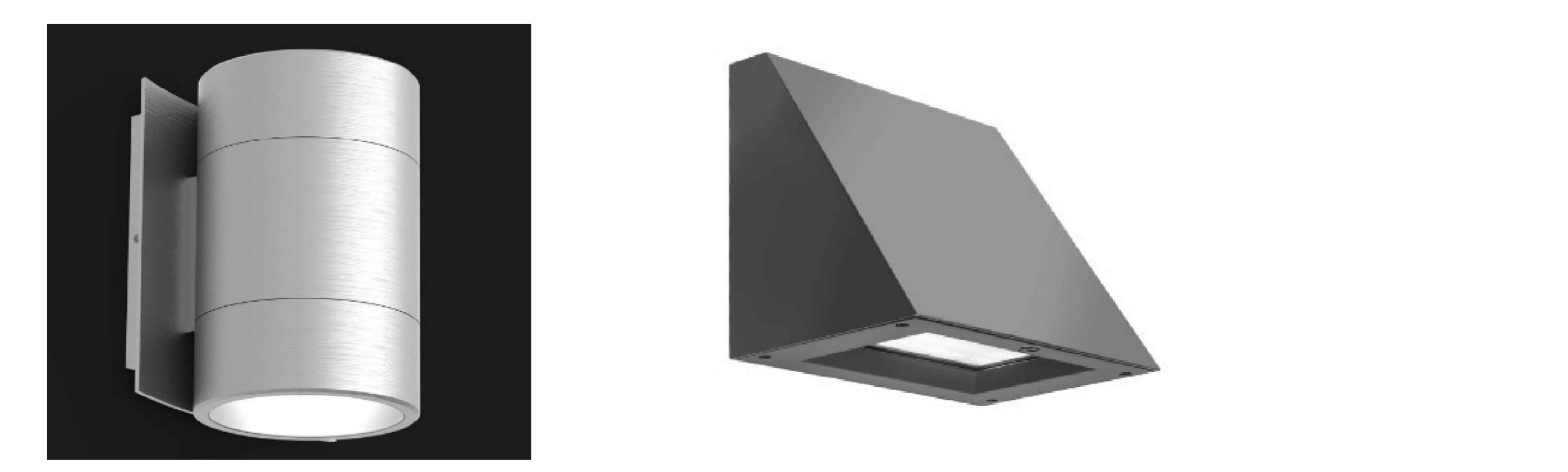
LANDSCAPE ALLOWANCE:
 ALL SITE LIGHTING/ EXTERIOR LIGHTING TO BE CONTROLLED BY PHOTOCELL ON/TIMECLOCK OFF COMBINATION
 ANY ROOFTOP AND FACADE ARCHITECTURAL ILLUMINATION TO BE PROGRAMMED TO TURN OFF BETWEEN 11PM AND 6AM (INCLUDING AMENITY TERRACES) DURING BIRD MIGRATORY SEASON ON A SEPARATE TIME CLOCK.

CONFIRM SITE LIGHTING WITH ARCHITECT/
 LANDSCAPE ARCHITECT.

E.C. IS TO ALLOW FOR 500 FT. OF 1" CONDUIT
 C/W 14#18R90 FOR IRRIGATION STUB POINTS TO LATER DETAIL.



TYPE 'BB' TYPE 'DD, DD1' TYPE 'HH'



TYPE 'JJ' TYPE 'LL'

Symbol	Qty	Label	Arrangement	Description	LLF	Luminaire Watts	Luminaire Total Watts
□	13	LL	Single	LITHONIA LIGHTING WOSEZ LED P2 30K R0CR1 VW	0.900	1996	25948
○	16	BB	Single	OSCE LIGHTING OSCE 12120000	0.900	111	1776
●	30	DD-10	Single	SALEX LIGHTING USA SALEX-RSXX-S6100-30-XXX-XXJNV	0.900	672	20160
○	12	DD-12 feet	Single	SALEX LIGHTING USA SALEX-RSXX-S6105-30-XXX-XXJNV	0.900	945	11340
○	10	HH-4 feet	Single	SALEX LIGHTING USA BLK-X-405-30-XX-XXJNV	0.900	2101	21010
○	8	JJ	Single	G LIGHTING GL-664-BCCRS-TELA	0.900	968	7744

Calculation Summary	CalcType	Units	Avg	Max	Min	AvgMin	MaxMin
DOOR RELIEF AREA_Top	Illuminance	Fc	4.79	9.0	2.0	2.08	3.45
Level 1_Top	Illuminance	Fc	2.33	7.2	0.3	N/A	N/A
outdoor fitness_Top	Illuminance	Fc	4.49	7.8	1.4	3.21	5.57
road_5_Top	Illuminance	Fc	4.77	9.4	0.8	5.86	19.75
road_Top	Illuminance	Fc	6.49	18.8	0.2	32.45	94.00
star_1_Top	Illuminance	Fc	1.80	2.1	1.5	1.50	1.40
star_10_Top	Illuminance	Fc	0.55	0.7	0.4	1.38	1.75
star_11_Top	Illuminance	Fc	0.45	0.6	0.3	1.50	2.00
star_12_Top	Illuminance	Fc	0.55	0.7	0.4	1.38	1.75
star_13_Top	Illuminance	Fc	0.45	0.5	0.4	1.13	1.25
star_14_Top	Illuminance	Fc	1.10	1.2	1.0	1.10	1.50
star_2_Top	Illuminance	Fc	1.95	2.3	1.6	1.22	1.44
star_3_Top	Illuminance	Fc	2.55	2.7	2.4	1.66	1.13
star_4_Top	Illuminance	Fc	4.00	4.8	3.1	1.29	1.58
star_5_Top	Illuminance	Fc	4.80	6.6	3.0	1.60	2.20
star_6_Top	Illuminance	Fc	3.60	4.8	2.4	1.50	2.00
star_7_Top	Illuminance	Fc	2.95	4.0	1.7	1.74	2.35
star_8_Top	Illuminance	Fc	1.50	1.6	1.0	1.30	1.60
star_8_Top.1	Illuminance	Fc	1.30	1.6	1.0	1.30	1.60
star_9_Top	Illuminance	Fc	0.80	1.1	0.5	1.60	2.20
star_Top	Illuminance	Fc	1.75	2.0	1.5	1.17	1.33
walkways_3_Top	Illuminance	Fc	4.05	9.1	0.9	N/A	N/A
Walkways_1_Top	Illuminance	Fc	5.21	17.6	0.9	N/A	N/A
Walkways_Top	Illuminance	Fc	5.53	17.0	0.6	9.22	28.33