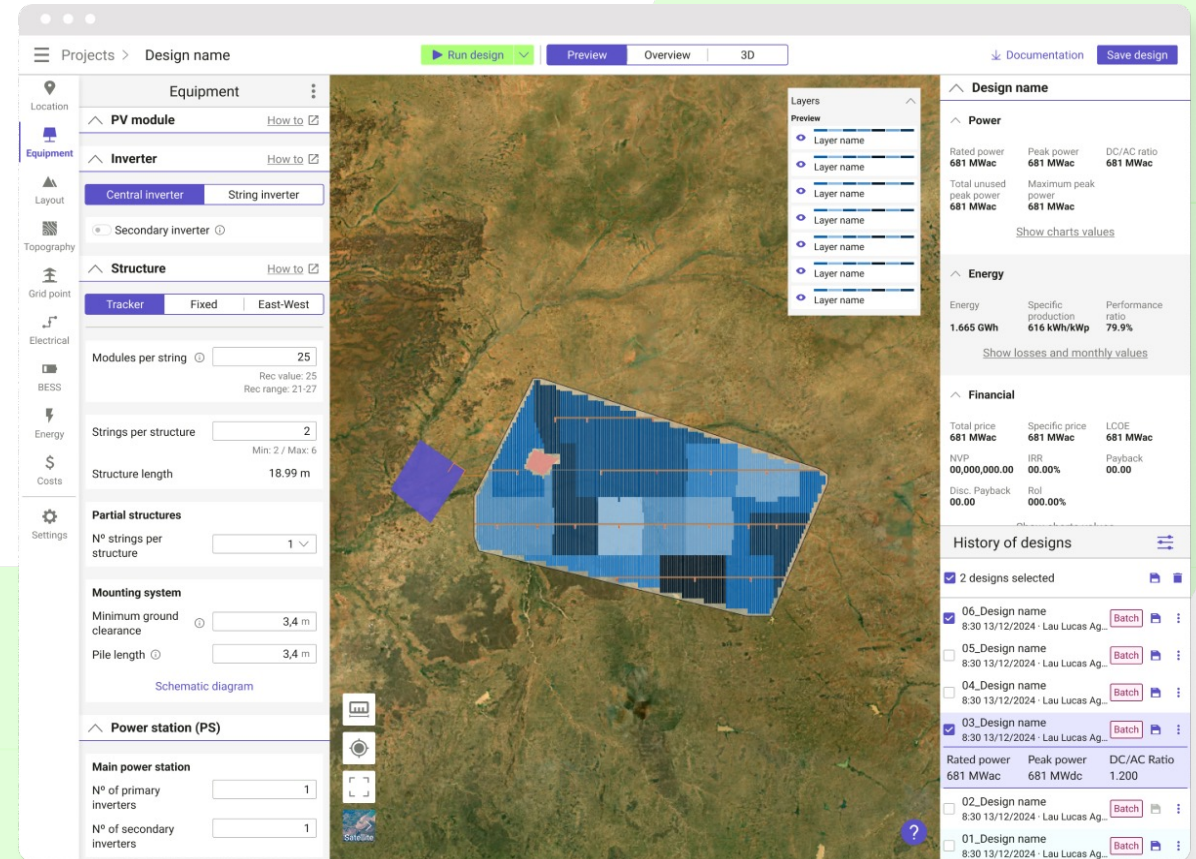


# Accelerating BESS design with industry-proven layouts



Your speaker today

## Gorka Arrieta Product Owner

Working for the Product team as Product Owner.

[garrieta@ratedpower.com](mailto:garrieta@ratedpower.com)



01. What is the feature?
02. How does it work?
03. Which are its benefits?
04. Let's see it in action
05. Q&A

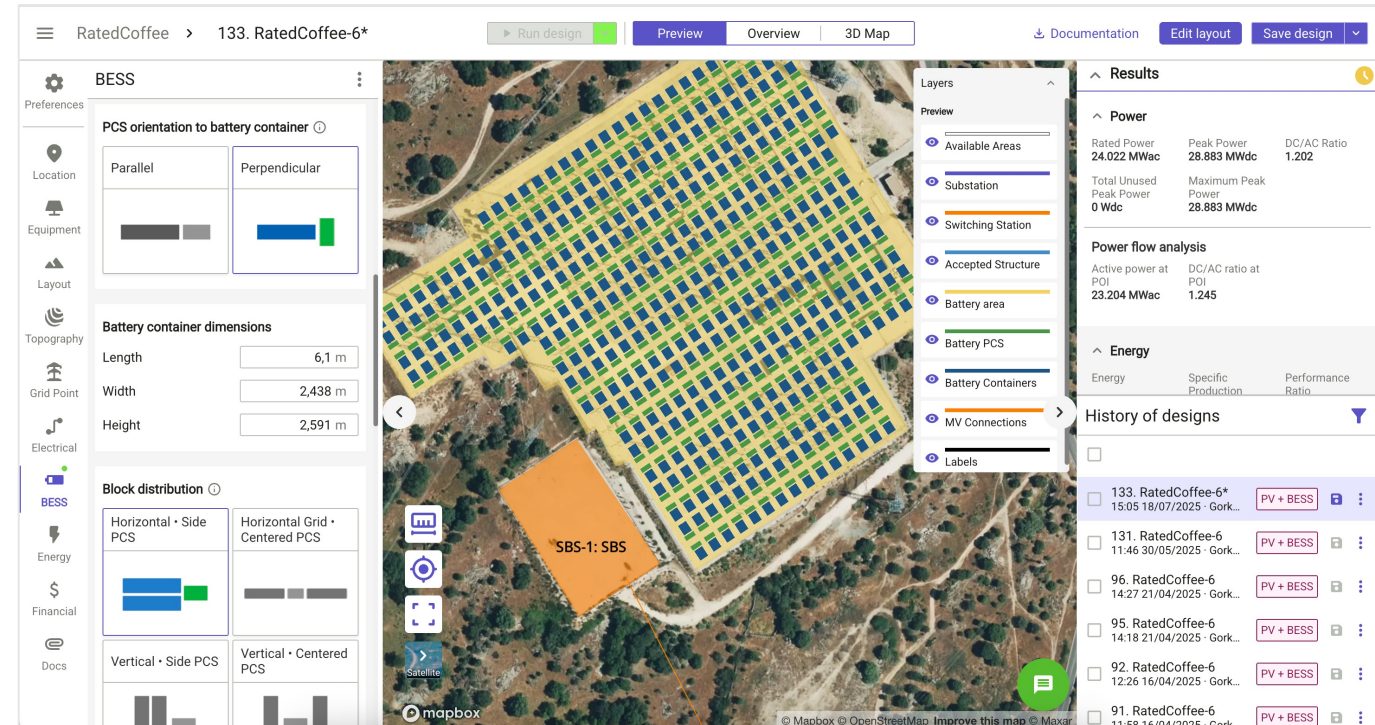
# 01. What is the feature?



What is the feature?

The objective of this feature is to allow users to easily replicate real world BESS layouts

- Increase flexibility in the positioning of elements
- Give control over setbacks
- Change layout distribution with a few clicks
- Generate project-ready layouts and documentation



## 02. How does it work?

How does it work?

## The tool provides multiple predefined distributions and orientations

- Distribution options depend on the number of containers per PCS
- Most common industry-proven layouts available
- Choose the options that replicate your preferred manufacturer guidelines
- Define setbacks between elements to comply with local regulation
- Save it as a template for future uses!



# 03. Which are its benefits?



Which are its benefits?

# Easy

Forget about manual container and PCS placement: choose from top industry layouts to save hours of manual work and speed up project planning and execution

# Compliant

Define regulation-compliant distance settings to minimize risks and reduce revision time

# Reliable

Generate precise, reliable BESS layouts, SLDs, and more in minutes. Match your manufacturer requirements in a few clicks!

# 04. Let's see it in action

# Questions?

We're all ears!

Drop yours in the question box



Gorka Arrieta

garrieta@ratedpower.com

ratedpower.com

Instagram: @rated\_power

Linkedin: /ratedpower