

A close-up photograph of a Harvia electric sauna heater. The heater is a dark, rectangular unit with the 'HARVIA' logo in white, bold, italicized letters. It is surrounded by a metal frame filled with smooth, dark grey sauna stones. The background is a soft, out-of-focus blue.

HARVIA

Sauna & Spa

ELECTRIC SAUNA HEATERS

ELECTRIC SAUNA HEATERS | CONTROL UNITS | HEATER ACCESSORIES

ENGLISH



CONTENT

RESPONSIBILITY	4
HOW TO CHOOSE A HEATER	6
Choose a heater according to your sauna bathing preferences	6
HOW TO CONTROL YOUR HEATER	8
SAUNA HEATERS FOR HOME USE	10
Delta	12
Delta Combi	12
Vega Compact	13
Vega	13
Spirit	14
Legend	18
Cilindro	22
Glow	28
Forte	31
The Wall	32
Moderna	34
Topclass Combi	35
Hidden heater	35
Virta	36
SAUNA HEATERS FOR COMMERCIAL USE	38
Virta Pro	40
Cilindro Pro	42
Senator	45
Club	46
Legend Pro	48
CONTROL UNITS	50
Home saunas	51
Commercial saunas	51
HEATER ACCESSORIES	54
Sauna heater stones	56
Decorative stones	56
SAUNA ACCESSORIES	58
TECHNICAL DATA	60



HEALING WITH HEAT



Sauna’s heat is good for the heart

Taking 2–3 sauna baths per week is enough to lower the risk of cardiovascular disease by 20% compared to those sauna bathing only once a week. The risks may decrease by up to 65% the more one sauna bathes.

Laukkanen, Khan, Zaccardi & Laukkanen 2015



Sauna bathing improves sleep quality

A study investigating the connection between sauna bathing and sleep saw a 70% increase in deep sleep during the first two hours and 45% increase in six hours. There was a statistically significant decrease in the participants’ staying-up time after sauna bathing.

Putkonen & Elomaa 1976



Sauna bathing is exercise

The heat of the sauna makes the heart pump blood faster, expanding the blood vessels and relieving the heart.

Brunt, Howard, Francisco, Ely, Minston 2016



Sauna bathing improves memory

Sauna bathing twice a week decreases the risk of dementia by one fifth compared to those sauna bathing only once a week. The risk is up to 60% less for people sauna bathing 4–7 times a week.

Laukkanen, Kunutsor, Kauhanen & Laukkanen 2016



Sauna bathing cherishes the skin

The heat of the sauna multiplies the amount of blood pumping through superficial veins, which boosts the skin’s metabolism. The skin feels nourished, maintains moisture and stays soft and elastic.

Viinikka 2020



Sauna bathing treats muscles

Sauna is a great place for relaxing tense muscles. However, sauna bathing before exercise prevents muscle pains and increases muscle mobility afterwards.

Khamwong, Paungmali, Pirunsan & Joseph 2015

RESPONSIBILITY



Sustainability is an integral and visible part of Harvia's operations. It is evident in the company's mission, vision and values and it is also an important differentiator, offering a competitive edge. Harvia designs and manufactures its products responsibly with respect for nature and people. Harvia has taken responsibility for its operations and products since 1950.

As the global sauna and spa market leader, Harvia wants to lead the way in the industry for more sustainable sauna experiences that promote health and wellbeing. By healing with heat, we contribute to a long and good life. Our ambition is to drive the sustainability agenda in our industry. We are committed to carbon neutrality in our operations by 2030 and to continuously improve the sustainability of sauna and spa experiences with a safe and warm community of employees, customers and partners.



Heat the sauna in a way that saves energy



Did you know that with a few simple measures, you can enjoy the heat produced by an electric sauna heater in a more environmentally friendly way?

Read our tips below and try them out the next time you are about to enjoy the health benefits of heat in your sauna.

- 1 Keep the heater in good condition and replace the stones regularly. It is advisable to take out and reinstall the sauna heater stones once a year.
- 2 Allow the sauna to heat for a sufficiently long time and go to sauna as soon as it is ready. This will help you save energy and money.
- 3 Only open doors and windows when necessary (particularly in the winter), as opening them quickly lowers the temperature in the sauna.
- 4 If the sauna is equipped with a vent for drying it, keep it closed while the sauna is being used.
- 5 When you stop using the sauna, try to make sure that the heater has stored enough heat to dry the structures of the sauna.

The heat generated while heating the sauna often remains inside the building, which means that it can be utilized efficiently if you have a heat recovery system or exhaust air heat pump. This way, most of the heat can be used to heat the rest of the building.

HOW TO CHOOSE A HEATER

What type of sauna experience do you prefer?

When designing your sauna, you will want to consider what type of steam you may prefer. This is largely determined by the type of heater chosen. When choosing the sauna heater you should also keep in mind your sauna preferences. Do you prefer a more humid and gentle sauna or do you like it hot and dry? Pillar heaters containing large amounts of stones take more time to heat up, and thanks to the stone amount, they give you a nice, gentle, and humid sauna experience that lasts long. If you prefer a hot and dry sauna then the box heaters with smaller stone amounts are a perfect choice as they heat up fast using less energy and give you the desired sauna experience.

The traditional sauna is hot and dry – with temperatures ranging from 70-90°C. Humidity is added by throwing water to the heater one scoop at a time to the stones of a typical wood-burning or electric heater.

A combi heater is a fitting choice when a "gentle sauna" or "humid sauna" is desired. The combi heater is heated to lower temperatures (40-75°C) and from the heater's steam generator, a constant stream of steam is produced to achieve the desired humidity.

Choose a heater according to your sauna bathing preferences

Do you like dry and hot saunas, do you prefer moist and gentle saunas, or perhaps a combination of these? With the help of our chart, you can find the right heater for your use. Remember to also the size of your sauna when choosing the heater.

Soft and gentle sauna

Heaters with a large stone mass are the right solution if you like a soft and gentle sauna. The temperature of the sauna remains moderate and the large stone mass guarantees moist and long sauna baths.

Hot and dry sauna

For lovers of hot and dry saunas, we recommend heaters with a smaller amount of stones rather than the pillar model heaters. The sauna heats up quickly and you can feel the steam on your skin with every throw of water.

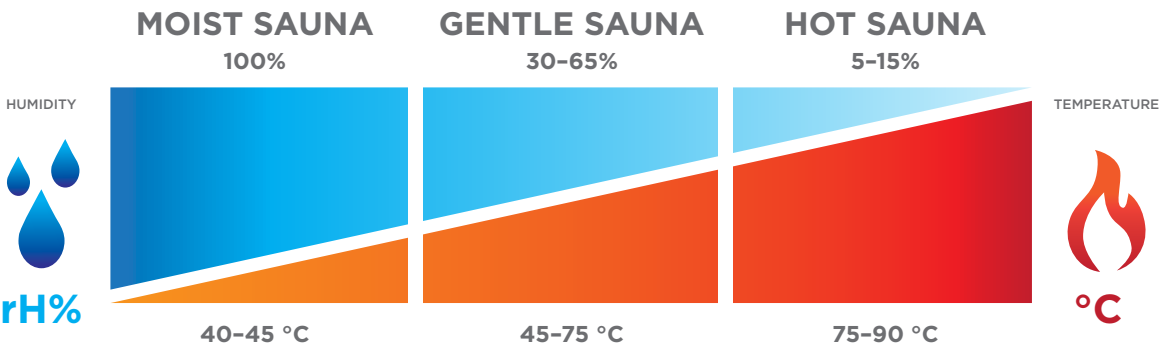
Moist sauna

Combi heaters are a combination of an electric heater and a vaporizer that keeps the heat of the sauna very pleasant. Combi heaters are perfect for sauna bathers who enjoy the atmosphere of soft and moist sauna baths and sauna scents.

You can recognize heaters with a soft löyly experience by this symbol

You can recognize heaters with a dry and hot löyly experience by this symbol

You can recognize heaters with a moist löyly experience by this symbol



Four electric heater options



Wall-mounted heaters

Harvia's wall-mounted electric sauna heaters are particularly suitable for small saunas where the heater should not take up too much space. As the name suggests, the heater is to be mounted on the wall.

See Spirit, The Wall



Floor-mounted heaters

We offer a wide selection of floor-mounted heaters, the most effective of which are popular in professional use and large saunas. Floor-mounted heaters can be installed in various ways, also embedded into a bench.

See Virta, Senator



Pillar heaters

Pillar heaters are excellently suited for private saunas and, depending on their power, also for public saunas. Thanks to the large number of stones, pillar heaters generate pleasant heat, guaranteeing a particularly pleasurable sauna experience.

See Cilindro, Glow



Combi heaters

The Combi heaters contain both an electric sauna heater and an integrated steamer that can be controlled separately. With a Combi heater, you can adjust the humidity level in your sauna with the accuracy of one percent.

See The Wall Combi, Virta Combi

Heater	Steam	Sauna room size
Delta		2-5 m³
Vega Compact		2-5 m³
Moderna		3-12 m³
Vega		3-14 m³
The Wall		3-14 m³
Topclass Combi		3-14 m³
Spirit		5-14 m³
Glow		6-14 m³
Forte		5-15 m³
Cilindro		5-18 m³
Virta		5-18 m³
Hidden heater		6-17 m³
Legend		6-18 m³
Senator		8-15 m³
Club		9-24 m³
Virta Pro		11-32 m³
Cilindro Pro		9-30 m³
Legend Pro		9-35 m³
Club Pro		18-66 m³

HOW TO CONTROL YOUR HEATER

Choose the most suitable control method for you and your sauna.

M

Built-in control unit

Harvia's electric heaters with traditional manual controls offer a simple way to control the heater with its thermostat and timer.

Features:

- Temperature control
- On-time 4 h (maximum)
- Timed start 8h (maximum)



E

Separate control unit needed

Harvia's E model electric heaters require Harvia's control units, which enable versatile use of the heater according to your needs. The functions of the heater are controlled by a separately sold control unit. The features vary from control unit to control unit. Combi heaters require a Combi control unit with which you can also control the functions of the evaporator. Harvia's E model heaters are easy to maintain and an excellent option for new properties. The control unit and heater are sold separately.

Features:

- Compatible with separately purchased Harvia control units



Safe and easy remote control of your sauna

Harvia WiFi solutions, combined with the MyHarvia mobile app, have been designed to allow the safe and easy remote control of your sauna. These solutions allow you to switch on the sauna heater remotely and control other features that will save energy, as your sauna will be ready exactly when you are. The door sensor, a safety device included in the Harvia Xenio WiFi accessory package, keeps the sauna safe as it can be controlled remotely.

You can control the features of the Harvia Xenio WiFi control panel from your mobile device from anywhere and at any time using the MyHarvia mobile app.

Harvia's E and XE model electric heaters can be remotely controlled by using the MyHarvia mobile app. For remote control of XE model heaters, you need to have a separately sold Harvia Xenio WiFi kit, which includes the Xenio WiFi control panel and the heater's safety device, in addition to the heater. The E model heater can be remotely controlled using the Harvia Xenio CX170 or Xenio Combi CX110C control unit and the Xenio WiFi kit (the control panel must be manufactured in 2020 or later). A separate WiFi kit is not required for the new Harvia Xenio CX170 WiFi and Xenio Combi CX110C WiFi control units.

Download
MyHarvia



XE model with a control panel

Harvia XE model heaters are easy to install and have versatile features that are controlled by the completely renewed Harvia Xenio control panel that comes with the heater. The control panel can be installed by surface mounting or by embedding it in, for example, a wall. The heater itself can be embedded into sauna benches. XE model heaters support remote control and are compatible with the MyHarvia mobile app with a separately sold Harvia WiFi kit.

Features:

- Control panel can be installed inside or outside the sauna
- MyHarvia compatible with a separately sold WiFi kit (CX001WIFI)
- Control temperature, time and lighting from the control panel
- Control panel has digital thermometer
- Timed start of the heater

XE



XW model with a WiFi control panel

Harvia XW model heaters are full set that allows you to conveniently control the sauna from the Xenio WiFi control panel or remotely via the MyHarvia mobile application. The accessories included in the package (door sensor, temperature sensor and Xenio WiFi control panel) are easy to install directly to the heater.

Features:

- WiFi ontrol panel can be installed inside or outside the sauna
- MyHarvia compatible
- Control temperature, time and lighting from the control panel
- Control panel has digital thermometer
- MyHarvia enables versatile timing functions (timer and weekly clock)

XW



SAUNA HEATERS FOR HOME USE

Sauna heaters that are intended for home saunas are perfectly suited for small or medium-sized saunas. The size and properties of the heaters vary depending on the purpose of use and design of the heater. From Harvia's selection, you can easily find a heater that is best suited for your preferences and sauna.





Delta

- Harvia Delta is a compact-sized triangular electric heater that can be installed in the corner of the sauna.
- A generous amount of sauna stones provides an excellent sauna experience.
- The heater is easy to install on the wall mount that comes with it.
- Harvia Delta heaters are available with manual control and as an E-model requiring a separate control unit.



Delta Combi



Delta

Delta E

Delta Combi

- Harvia Delta Combi heaters provide soft and humid sauna experience.
- A generous amount of sauna stones provides an excellent sauna experience.
- The heater is easy to install on the wall mount that comes with it.
- Harvia Delta Combi heaters are controlled by a separate control unit.



Heater	Product number	Heater mounting method	Heater control method	Output kW	Sauna room size min-max. m³	Dimensions width x depth x height mm	Weight kg	Stone capacity max. kg
Delta D23	HD234M	wall-mounted	M	2.3	1.3-2.5	340 x 200 x 635	8	11
Delta D23E	HDE234M	wall-mounted	E	2.3	1.3-2.5	340 x 200 x 635	8	11
Delta D29	HD294M	wall-mounted	M	2.9	2-4	340 x 200 x 635	8	11
Delta D29E	HDE294M	wall-mounted	M	2.9	2-4	340 x 200 x 635	8	11
Delta D36	HD364M	wall-mounted	M	3.6	2-4.5	340 x 200 x 635	8	11
Delta 36E	HDE36M	wall-mounted	E	3.6	2-4.5	340 x 200 x 635	8	11
Delta Combi D29S	HDSE29230M	wall-mounted	E	2.9	2-5	340 x 200 x 635	8	11

Control unit



Xenio CX110 (Delta E)

Accessories



Embedding flange HD1



Safety railing HD3M

Vega Compact

- Small and compact wall-mounted electric heater.
- Can be installed low down, so that the heat is also distributed to lower benches in the sauna.
- Harvia Vega Compact heaters are available with manual control and as an E model requiring a separate control unit.



Vega Compact

Vega Compact E

Heater	Product number	Heater mounting method	Heater control method	Output kW	Sauna room size min-max. m³	Dimensions width x depth x height mm	Weight kg	Stone capacity max. kg
Vega Compact BC23	HCB230400S	wall-mounted	M	2,3	1,3-2,5	365 x 295 x 505	7	12
Vega Compact BC23E	HCBE230400S	wall-mounted	E	2,3	1,3-2,5	365 x 295 x 505	7	12
Vega Compact BC35	HCB350400S	wall-mounted	M	3,5	2-4,5	365 x 295 x 505	7	12
Vega Compact BC35E	HCBE350400S	wall-mounted	E	3,5	2-4,5	365 x 295 x 505	7	12

Vega

- Reliable basic electric heater.
- The manual switches are placed ergonomically on the top side of the heater.
- The heater is easy to install on a separate wall mount and thanks to the symmetrical shape, you can choose the handiness yourself.
- Can be installed low down, so that the heat is also distributed to lower benches in the sauna.
- Harvia Vega heaters are available with manual control and as an E model requiring a separate control unit.



Vega

Vega E

Heater	Product number	Heater mounting method	Heater control method	Output kW	Sauna room size min-max. m³	Dimensions width x depth x height mm	Weight kg	Stone capacity max. kg
Vega BC45	HBC450400S	wall-mounted	M	4,5	3-6	480 x 310 x 540	11	20
Vega BC60	HBC600400S	wall-mounted	M	6,0	5-8	480 x 310 x 540	11	20
Vega BC60E	HCBE600400S	wall-mounted	E	6,0	5-8	480 x 310 x 540	11	20
Vega BC80	HBC800400S	wall-mounted	M	8,0	7-12	480 x 310 x 540	11	20
Vega BC90E	HCBE900400S	wall-mounted	E	9,0	8-14	480 x 310 x 540	11	20



Spirit

Harvia Spirit design heater is a high-quality electric heater that is designed and manufactured in Finland. The Spirit emphasizes safety and energy efficiency in addition to an excellent sauna experience. As its name suggests, Harvia Spirit is the spirit of löyly* which guarantees soft and enjoyable steam. The Spirit supports WiFi control so you can conveniently control the heater with the MyHarvia mobile application.

**Löyly ['løyly] is a Finnish word that describes the evaporating hot and healing steam that comes from the sauna heater once water has been poured on top of it. Löyly creates the authentic sauna experience and brings the healing heat of the sauna to your skin and soul.*





1. A unique air ventilation channel at the back of the electric heater directs cool air from the bottom of the heater to the top of the heater and prevents the wall structures from getting too hot while increasing the airflow in the sauna.
2. The heating element tunnel in the stone space of the heater enhances the hot air circulation through the heater which speeds up the heating time and evens out the temperature of the sauna.
3. The heat radiation protection on the front of the Spirit heater provides protection for the sauna and the sauna users and guides the steam to the upper part of the heater.

Spirit

- Stylish and compact wall-mounted design heater.
- Easy and safe to use.
- The XW model comes with a separate control unit that can be installed under sauna benches.
- The XW model includes everything you need for WiFi controlling your heater.
- E model requires separately sold control unit.
- Rounded sauna heater stones are recommended.



Spirit E



Spirit XW

Heater	Product number	Heater mounting method	Heater control method	Output kW	Sauna room size min-max. m³	Dimensions width x depth x height mm	Weight kg	Stone capacity max. kg
Spirit SP60E	HSPE604M	wall-mounted	E	6,0	5-8	385 x 334 x 687	11	60
Spirit SP60XW	HSP604MXW	wall-mounted	XW	6,0	5-8	385 x 334 x 687	11	60
Spirit SP90E	HSPE904M	wall-mounted	E	9,0	8-14	365 x 295 x 505	12	60
Spirit SP90XW	HSP904MXW	wall-mounted	XW	9,0	8-14	365 x 295 x 505	12	60



SOFT & STEAMY
SAUNA BATHS



LARGE AMOUNT
OF SAUNA STONES



EASY & SAFE
TO USE



SMALL SPACE
REQUIREMENT



CLOSE TO
NATURE DESIGN



MADE IN FINLAND



ENERGY EFFICIENT WITH
A SHORT HEAT-UP TIME

Control unit



Xenio CX110
(Spirit E)

Accessories



Embedding flange
HSP1



Safety railing
SP3



Rounded heater stones
R-991

Legend

– It's all about steam

Harvia's Legend electric sauna heater, now in a new size, continues the Finnish sauna tradition and the story of unwavering Harvia quality! The compact Legend electric sauna heater brings the soft steam baths into small family saunas.

Legend's rustic steel frame contains a large amount of stones, creating the distinctive smooth steam bath. The heater, with fine details added by the blacksmith, is a true eye-catcher. The black Legend electric sauna heater, with its pillar shape and large amount of stones, can also be embedded impressively into the benches. Create something special with the comprehensive Legend selection.

Choose the strong Legend and begin your own legendary sauna story.





Complete the interior of your sauna with Legend sauna accessories

The appearance of the Harvia Legend electric heater is completed by compatible Legend accessories. In the comprehensive selection, you can find protective sheaths, safety railings, and an embedding flange for the heater, which bring additional safety to your sauna in addition to finalized looks. Crown your sauna experience with Legend sauna accessories.



Legend XW

- The Harvia Legend pillar heater provides soft and long-lasting steam for family saunas.
- Can be installed by embedding the heater into sauna benches.
- The heater's digital and modern WiFi control ensures enjoyment in the sauna.
- The Legend XW can be controlled remotely via MyHarvia app.
- The renewed and advanced tunnel for heating elements separates the heating elements from the stones and guarantees fast heating time.



Heater	Product number	Heater mounting method	Heater control method	Output kW	Sauna room size min-max. m³	Dimensions width x depth x height mm	Weight kg	Stone capacity max. kg
Legend PO70XW WiFi	HPO704XW	floor-mounted	XW	6,8	6-10	325 x 325 x 1080	18,5	100
Legend PO110XW WiFi	HPO1104XW	floor-mounted	XW	10,8	9-18	325 x 325 x 1080	18,5	100

Legend E

- The Harvia Legend pillar heater provides soft and long-lasting steam for family saunas.
- Can be installed by embedding the heater into sauna benches.
- E model heaters require separately sold control units.
- The renewed and advanced tunnel for heating elements separates the heating elements from the stones and guarantees fast heating time.



Heater	Product number	Heater mounting method	Heater control method	Output kW	Sauna room size min-max. m³	Dimensions width x depth x height mm	Weight kg	Stone capacity max. kg
Legend PO70E	HPOE704	floor-mounted	E	6,8	6-10	325 x 325 x 1080	18,5	100
Legend PO110E	HPOE1104	floor-mounted	E	10,8	9-18	325 x 325 x 1080	18,5	100

Control unit



Xenio CX170XW WIFI (Legend E)

Accessories



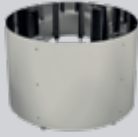
Embedding flange HP02



Safety railing HP03



Illuminated safety railing HP03L



Extension base HPC20



Safety switch SFE-D350



Protective sheath HP011

Cilindro

Harvia Cilindro pillar heaters are stylish electric heaters ideal for many needs. The size and massive stone quantity of the heater are optimised to provide a smooth, yet powerful sauna bath in saunas of all sizes – from small family saunas to large public ones.

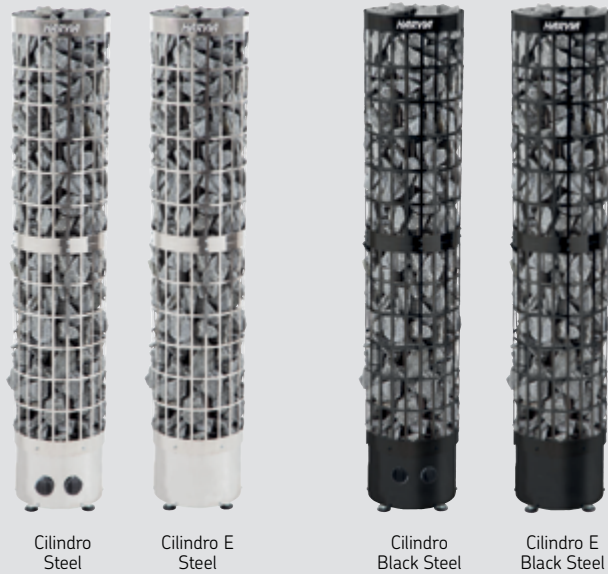
The pillar form factor offers freedom for sauna design, making the heater easy to embed into the bench or place in front of a glass wall for an eye-catching display. The Cilindro heaters combine high quality with an impressive appearance. The glossy stainless steel exterior is a great addition to any sauna.





Cilindro PC66

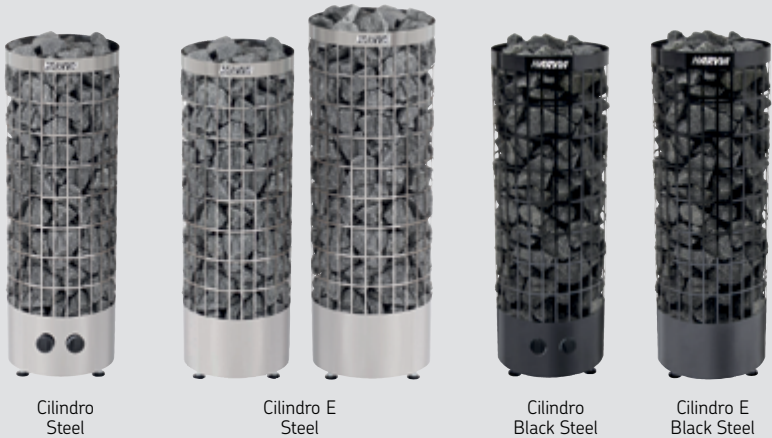
- The tall and narrow Cilindro PC66 is designed specifically for corner installations, and provides an excellent alternative to wall-mounted sauna heaters.
- The delivery includes a protective steel sheath, which significantly reduces the required safety distances. You can choose whether you want to attach a protective sheath on the sauna heater or leave the stone surface bare.
- Easy-to-use operating switches at the front of the heater.
- Model E heaters are controlled by a separate control unit (not included).



Heater	Product number	Heater color	Heater mounting method	Heater control method	Output kW	Sauna room size min-max. m³	Dimensions width x depth x height mm	Weight kg	Stone capacity max. kg
Cilindro PC66	HPC66400	Steel	floor-mounted	M	6,6	5-9	255 x 255 x 1340	11	75
Cilindro PC66	HPC66400M	Black Steel	floor-mounted	M	6,6	5-9	255 x 255 x 1340	11	75
Cilindro PC66E	HPCE66400	Steel	floor-mounted	E	6,6	5-9	255 x 255 x 1340	11	75
Cilindro PC66E	HPCE66400M	Black Steel	floor-mounted	E	6,6	5-9	255 x 255 x 1340	11	75

Cilindro

- This heater features a large amount of stones, ensuring a particularly enjoyable sauna experience.
- Suitable for various settings and installations.
- Easy-to-use operating switches at the front of the heater.
- Model E heaters are controlled by a separate control unit (not included).



Heater	Product number	Heater color	Heater mounting method	Heater control method	Output kW	Sauna room size min-max. m³	Dimensions width x depth x height mm	Weight kg	Stone capacity max. kg
Cilindro PC70	HPC700400	Steel	floor-mounted	M	6,8	6-10	320 x 320 x 930	10	80
Cilindro PC70	HPC700400M	Black Steel	floor-mounted	M	6,8	6-10	320 x 320 x 930	10	80
Cilindro PC70E	HPCE700400	Steel	floor-mounted	E	6,8	6-10	320 x 320 x 930	10	90
Cilindro PC70E	HPCE700400M	Black Steel	floor-mounted	E	6,8	6-10	320 x 320 x 930	10	90
Cilindro PC90	HPC900400	Steel	floor-mounted	M	9,0	8-14	320 x 320 x 930	10	80
Cilindro PC90	HPC900400M	Black Steel	floor-mounted	M	9,0	8-14	320 x 320 x 930	10	80
Cilindro PC90E	HPCE900400	Steel	floor-mounted	E	9,0	8-14	320 x 320 x 930	10	90
Cilindro PC90E	HPCE900400M	Black Steel	floor-mounted	E	9,0	8-14	320 x 320 x 930	10	90
Cilindro PC110E	HPCE1104	Steel	floor-mounted	E	10,8	9-18	365 x 365 x 1070	13	120

Control unit



Xenio CX170XW WIFI (Cilindro E)

Accessories



Embedding flange HPC2



Illuminated embedding flange HPC2L



Safety railing HPC10

Control unit



Xenio CX170XW WIFI (Cilindro E)

Accessories



Embedding flange HPC2



Illuminated embedding flange HPC2L



Safety railing HPC3



Illuminated safety railing HPC3L

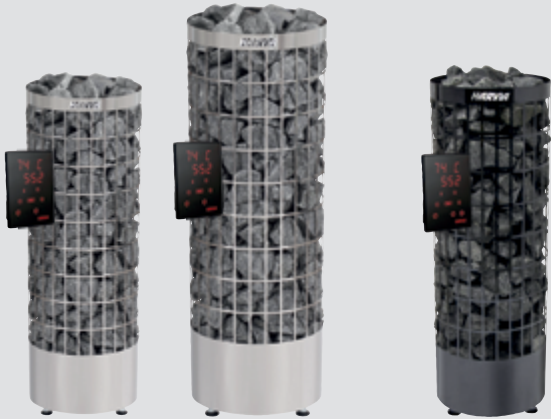


Xenio CX001WiFi
WiFi kit makes your XE
heater remote-controlled



Cilindro XE

- This heater features a large amount of stones, ensuring a particularly enjoyable sauna experience.
- The heater comes with a versatile illuminated control panel with touch buttons and digital displays.
- Can be remotely started, compatible with MyHarvia.
- Contains integrated safety device operations (door switch or sauna heater safety device). The safety devices can be easily connected to the heater.
- See the sauna temperature accurately on the digital display.
- The control unit can be installed inside the sauna.



Heater	Product number	Heater color	Heater mounting method	Heater control method	Output kW	Sauna room size min-max. m³	Dimensions width x depth x height mm	Weight kg	Stone capacity max. kg
Cilindro PC70XE	HPC704XE	Steel	floor-mounted	XE	6,8	6-10	320 x 320 x 930	10	90
Cilindro PC70XE	HPC7004MXE	Black Steel	floor-mounted	XE	6,8	6-10	320 x 320 x 930	10	90
Cilindro PC90XE	HPC904XE	Steel	floor-mounted	XE	9,0	8-14	320 x 320 x 930	10	90
Cilindro PC90XE	HPC9004MXE	Black Steel	floor-mounted	XE	9,0	8-14	320 x 320 x 930	10	90
Cilindro PC110XE	HPC1104XE	Steel	floor-mounted	XE	10,8	9-18	365 x 365 x 1070	13	120

Cilindro XW

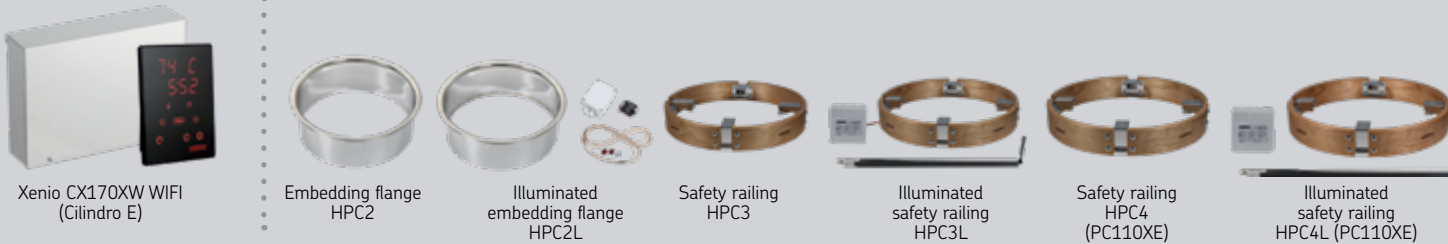
- Thanks to the large amount of stones, the heater guarantees an especially pleasant steam bath in a medium-sized sauna.
- A modern pillar heater that you can safely control from your phone using the MyHarvia mobile application.
- A door sensor linked to the heater ensures safety during remote use.
- Thanks to the stylish Harvia Xenio WiFi touch panel, which is mounted separately on the wall, the heater is very easy to use. The sauna will be warm whenever you want it to be.



Heater	Product number	Heater color	Heater mounting method	Heater control method	Output kW	Sauna room size min-max. m³	Dimensions width x depth x height mm	Weight kg	Stone capacity max. kg
Cilindro PC70XW	HPC704XW	Steel	floor-mounted	XW	6,8	6-10	320 x 320 x 930	10	90
Cilindro PC90XW	HPC904XW	Steel	floor-mounted	XW	9,0	8-14	320 x 320 x 930	10	90

Control unit

Accessories



Accessories





Glow

Harvia Glow pillar heater has been designed to meet the needs of even the most demanding sauna decorator. Choose the tall, pillar model Glow or corner-mounted Glow Corner as the eye-catcher of your sauna interior.

In addition to their aesthetic, Glow heaters also offer a pleasant sauna experience: the large stone quantity enables soft, comfortable steam. The heater's outer casing reveals plenty of surface made of the stones, and you can control the amount of steam and its heat by either throwing water directly on the stone pillar or on its side.



Glow

- Tall crown-like pillar heater with a massive amount of stones.
- In the manual version, the switches are located on the bottom of the heater.
- The XE model includes a control panel that can be installed inside or outside of the sauna.
- XE models are WiFi compatible with the separately sold WiFi add-on kit and with the MyHarvia app.
- The E model heater requires a separately sold control unit to operate.

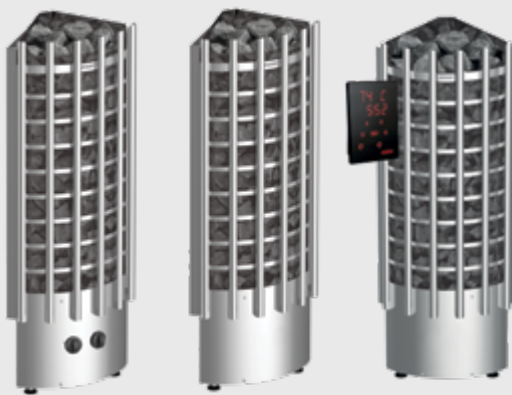


Glow Glow E Glow XE

Heater	Product number	Heater mounting method	Heater control method	Output kW	Sauna room size min-max. m³	Dimensions width x depth x height mm	Weight kg	Stone capacity max. kg
Glow TRT70	HTRT700400	floor-mounted	M	6,8	6-10	364 x 364 x 1076	14	80
Glow TRT70E	HTRTE700400	floor-mounted	E	6,8	6-10	364 x 364 x 1076	14	80
Glow TRT70XE	HTRT704XE	floor-mounted	XE	6,8	6-10	364 x 364 x 1076	14	80
Glow TRT90	HTRT900400	floor-mounted	M	9,0	8-14	364 x 364 x 1076	14	90
Glow TRT90E	HTRTE900400	floor-mounted	E	9,0	8-14	364 x 364 x 1076	14	90
Glow TRT90XE	HTRT904XE	floor-mounted	XE	9,0	8-14	364 x 364 x 1076	14	90

Glow corner

- The Harvia Glow Corner pillar heater is installed in the corner of the sauna and requires small space.
- In the manual version, the switches are located on the bottom of the heater.
- The XE model includes a control panel that can be installed inside or outside of the sauna.
- XE models are WiFi compatible with the separately sold WiFi add-on kit and with the MyHarvia app.
- The E model heater requires a separately sold control unit to operate.



Glow corner Glow corner E Glow corner XE

Heater	Product number	Heater mounting method	Heater control method	Output kW	Sauna room size min-max. m³	Dimensions width x depth x height mm	Weight kg	Stone capacity max. kg
Glow corner TRC70	HTRC700400	floor-mounted	M	6,8	6-10	330 x 330 x 1100	16,3	90
Glow corner TRC70E	HTRCE700400	floor-mounted	E	6,8	6-10	330 x 330 x 1100	16,3	50
Glow corner TRC70XE	HTRC704XE	floor-mounted	XE	6,8	6-10	330 x 330 x 1100	16,3	50
Glow corner TRC90	HTRC900400	floor-mounted	M	9,0	8-14	330 x 330 x 1100	19,7	50
Glow corner TRC90E	HTRCE900400	floor-mounted	E	9,0	8-14	330 x 330 x 1100	19,7	50
Glow corner TRC90XE	HTRC904XE	floor-mounted	XE	9,0	8-14	330 x 330 x 1100	19,7	50

Control unit



Xenio CX170XW WIFI (Glow E)

Accessories



Control unit



Xenio CX170XW WIFI (Glow corner E)

Accessories





Forte

Harvia's always-ready Forte electric sauna heater is a perfect choice for those who use the sauna frequently and want to enjoy the heat immediately. Forget the hustle and bustle of everyday life and enjoy the health benefits of going to sauna anytime you want. All you need to do is lift the cover, throw water on the hot stones and enjoy the pleasant sauna experience offered by the Forte heater. With the Forte heater, you can enjoy an extremely humid steam bath or a hotter and drier sauna experience – whatever you like.

- An electric heater that's always ready.
- Thanks to the insulated stone space and intelligent control features, this heater is also an energy-efficient choice.
- All you have to do to heat up the sauna is to open the heater cover and splash some water on the stones.
- The heater functions are controlled by a separate control panel installed in the sauna.
- A child-friendly and extremely safe heater. The exterior is cool and safe to the touch.
- The heater will automatically switch off if the door is left open.
- The stone space temperature can be adjusted while the sauna is in use and when the heater is in standby mode.



Heater	Product number	Heater color	Heater mounting method	Heater control method	Output kW	Sauna room size min-max. m³	Dimensions width x depth x height mm	Weight kg	Stone capacity max. kg
Forte AFB6	HAFB600400S	Steel	floor-mounted	separate control panel	6,0	7-12	500 x 535 x 830	30	100
Forte AFB6	HAFB600400M	Black	floor-mounted	separate control panel	6,0	7-12	500 x 535 x 830	30	100
Forte AFB9	HAFB900400S	Steel	floor-mounted	separate control panel	9,0	10-15	500 x 535 x 830	30	100
Forte AFB9	HAFB900400M	Black	floor-mounted	separate control panel	9,0	10-15	500 x 535 x 830	30	100

Accessories



Embedding flange
HAF1



The Wall

The Wall requires only little space inside the sauna. This heater was created with a focus on functionality. Illuminated switches, durable construction and ease of installation make The Wall a great product. The total package is both compact and stylish.

The unique Harvia mounting/wall rack included in the scope of delivery determines the minimum safety distance between the heater and the floor. Installation of the heater is quick and easy.

The model E stove is controlled by a separate control unit. Thanks to the control unit, The Wall E can also be integrated into the bench, giving you more flexibility in regard to the design of your sauna room.

The integrated steamer of the Wall Combi heater generates and maintains steady humidity in the sauna – with precision down to the percentage. The steam makes the sauna heat more pleasant, providing a soft and humid bathing experience. You can add fragrances to the stone cup of the sauna heater.



Control unit



Xenio CX170XW WIFI
(The Wall E)

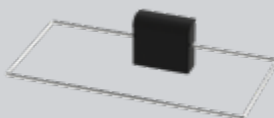


Xenio CX170 Combi
(The Wall Combi)

Accessories



Embedding flange
HSW1



Safety switch
SFE220400

The Wall

- User-friendly, illuminated operating switches.
- Can be configured for either left- or right-handed users during installation.



The Wall
Black Steel

The Wall
Steel

The Wall E

- Controllable by a separate and separately purchased control unit.
- Can be integrated into the sauna bench.



The Wall E
Black Steel

The Wall E
Steel

The Wall Combi

- Versatile combi heater with an integrated steamer.
- Uniform humidity, up to 1% accuracy.
- Controllable by a separate and separately purchased control unit.



The Wall Combi
Black Steel

Heater	Product number	Heater color	Heater mounting method	Heater control method	Output kW	Sauna room size min-max. m³	Dimensions width x depth x height mm	Weight kg	Stone capacity max. kg
The Wall SW45	HSW450400	Steel	wall-mounted	M	4,5	3-6	380 x 260 x 610	11	20
The Wall SW45	HSW450400M	Black Steel	wall-mounted	M	4,5	3-6	380 x 260 x 610	11	20
The Wall SW45E	HSWE450400	Steel	wall-mounted	E	4,5	3-6	380 x 260 x 610	11	20
The Wall SW45E	HSWE450400M	Black Steel	wall-mounted	E	4,5	3-6	380 x 260 x 610	11	20
The Wall Combi SW45S	HSW450400S	Steel	wall-mounted	E	4,5	3-6	380 x 355 x 710	16	20
The Wall SW60	HSW600400	Steel	wall-mounted	M	6,0	5-8	430 x 260 x 610	12	20
The Wall SW60	HSW600400M	Black Steel	wall-mounted	M	6,0	5-8	430 x 260 x 610	12	20
The Wall SW60E	HSWE600400	Steel	wall-mounted	E	6,0	5-8	430 x 260 x 610	12	20
The Wall SW60E	HSWE600400M	Black Steel	wall-mounted	E	6,0	5-8	430 x 260 x 610	12	20
The Wall SW80	HSW800400	Steel	wall-mounted	M	8,0	7-12	430 x 260 x 700	14	20
The Wall SW80	HSW800400	Black Steel	wall-mounted	M	8,0	7-12	430 x 260 x 700	14	20
The Wall Combi SW70S	HSW700400S	Steel	wall-mounted	E	7,0	5-8	380 x 355 x 710	16,8	20
The Wall SW90E	HSWE900400	Steel	wall-mounted	E	9,0	8-14	380 x 260 x 700	14	20
The Wall SW90E	HSWE900400M	Black Steel	wall-mounted	E	9,0	8-14	380 x 260 x 700	14	20
The Wall Combi SW90S	HSW900400S	Steel	wall-mounted	E	9,0	7-12	380 x 355 x 710	16,8	20



Topclass Combi

- The Topclass Combi is a unique combination of an electric heater and a steamer that provides sauna enjoyment for all senses.
- You can select between a traditional Finnish sauna, a steam sauna, a herbal sauna or an aromatic sauna.
- This heater is created for users who appreciate soft and humid steam and a fragrant atmosphere. The heater has soapstone cups to hold sauna fragrances and a stainless steel grate for bagged aromatic fragrances.
- Topclass Combi heaters are controlled by a separate control unit.



Heater	Product number	Heater mounting method	Heater control method	Output kW	Sauna room size min-max. m³	Dimensions width x depth x height mm	Weight kg	Stone capacity max. kg
Topclass Combi KV50SE	HKSE500400	wall-mounted	E	5.0	3-6	410 x 280 x 600	16	25
Topclass Combi KV60SE	HKSE600400	wall-mounted	E	6.0	5-8	410 x 280 x 600	16	25
Topclass Combi KV80SE	HKSE800400	wall-mounted	E	8.0	7-12	410 x 280 x 600	16	25
Topclass Combi KV90SE	HKSE900400	wall-mounted	E	9.0	8-14	410 x 280 x 600	16	25

Moderna

- The stylish Moderna XE with digital control, mounted on the wall, will heat up your sauna quickly.
- The Moderna XE electric sauna heater a range of features and it is easy to install in a new or old sauna.
- Moderna does not require a separate control unit installed in a dry room.
- All connections, such as the control panel, door sensor and temperature sensor and connected directly to the heater.



Heater	Product number	Heater mounting method	Heater control method	Output kW	Sauna room size min-max. m³	Dimensions width x depth x height mm	Weight kg	Stone capacity max. kg
Moderna V45XE	HVE454XEM	wall-mounted	XE	4,5	3-6	410 x 310 x 580	15	20
Moderna V60XE	HVE604XEM	wall-mounted	XE	6,0	5-8	410 x 310 x 580	15	20
Moderna V80XE	HVE804XEM	wall-mounted	XE	8,0	7-12	410 x 310 x 580	15	20

Hidden heater

- Practical heater requiring very little space. It is mounted behind the benches and is therefore very well-suited for community saunas.
- Optional accessories for Hidden Heater include a soapstone bowl and a flexible hose pipe. The heat remains comfortably even when water is conveyed to the heater little by little. The bowl is placed on the bench and water is poured into it. The hose pipe takes the water to the heater.
- This heater is designed for heavy-duty use and completely made of high-quality stainless steel.
- The Hidden Heater is controlled by a separate control unit.



Heater	Product number	Heater mounting method	Heater control method	Output kW	Sauna room size min-max. m³	Dimensions width x depth x height mm	Weight kg	Stone capacity max. kg
Hidden heater HH6	HH060400	wall-mounted	E	6.0	6-10	400 x 360 x 640	33	15
Hidden heater HH9	HH090400	wall-mounted	E	9.0	10-14	400 x 360 x 640	33	15
Hidden heater HH12	HH120400	wall-mounted	E	12	12-17	400 x 360 x 640	33	15



Virta

The Harvia Virta is the perfect choice for a medium-sized or large sauna when you want a sturdy structure, reliability and a sleek and modern design. Their strong structure and exceptional ease of maintenance make Virta heaters excellently suitable for those who use the sauna often and like to enjoy the steam for long periods of time. The heating elements are separated from the stones, which results in a long heating element life span. The large number of stones guarantees soft and abundant steam. Efficient air circulation heats the sauna very quickly.

Virta

- Harvia Virta is a sturdy sauna heater that provides a gentle steam bath for those who appreciate a traditional sauna experience.
- Suitable for both private and communal saunas.
- The heater is available in three versions with different power capabilities. The high-power HL110 is 7 cm deeper than the two other models, HL70 and HL90.
- The heaters are controlled with a separate control unit (not included in the delivery).



Virta
HL70/HL90



Virta
HL110

Heater	Product number	Heater mounting method	Heater control method	Output kW	Sauna room size min-max. m³	Dimensions width x depth x height mm	Weight kg	Stone capacity max. kg
Virta HL70	HL700400	floor-mounted	E	6,8	5-10	415 x 340 x 810	21	50
Virta HL90	HL900400	floor-mounted	E	9,0	8-14	415 x 340 x 810	21	50
Virta HL110	HL110400	floor-mounted	E	10,8	9-18	415 x 410 x 810	24	70

Virta Combi

- Virta Combi is a combination of an electric heater and a steamer, offering a variety of different sauna experiences.
- Suitable for both private and communal saunas.
- The water tank has a volume of 5 liters. Depending on the model, the tank is filled either manually (S) or automatically (SA) from a water point near the heater.
- The heater features a soapstone cup for sauna fragrances and a stainless steel grate for bagged scents.
- The Combi system is reliable and easy to use.
- The heaters are controlled with a separate control unit (not included in the delivery).



Virta Combi
HL70/HL90



Virta Combi
HL110S/HL110SA

Heater	Product number	Heater mounting method	Heater control method	Output kW	Sauna room size min-max. m³	Dimensions width x depth x height mm	Weight kg	Stone capacity max. kg
Virta Combi HL70S	HL700400S	floor-mounted	E	6,8	5-10	415 x 340 x 810	27	50
Virta Combi HL70SA	HL700400SA	floor-mounted	E	6,8	5-10	415 x 340 x 810	27	50
Virta Combi HL90S	HL900400S	floor-mounted	E	9,0	8-14	415 x 340 x 810	27	50
Virta Combi HL90SA	HL900400SA	floor-mounted	E	9,0	8-14	415 x 340 x 810	27	50
Virta Combi HL110S	HL110400S	floor-mounted	E	10,8	9-18	415 x 410 x 810	29	70
Virta Combi HL110SA	HL110400SA	floor-mounted	E	10,8	9-18	415 x 410 x 810	29	70

Control unit



Xenio CX170 WIFI
(Virta)



Xenio Combi CX110C
(Virta Combi)

Accessories



Embedding flange
HL1M



Safety railing
HL3S



Safety railing
HL3M



Safety railing
HL3L

SAUNA HEATERS FOR COMMERCIAL USE

The sauna heaters of large saunas and saunas in continuous use require power and durability. The humidity and heat of the sauna must remain even for long periods of time. The characteristics of Harvia's professional sauna heaters are especially suitable for shared saunas in apartment buildings and townhouses, swimming pools, spas, and other large saunas.



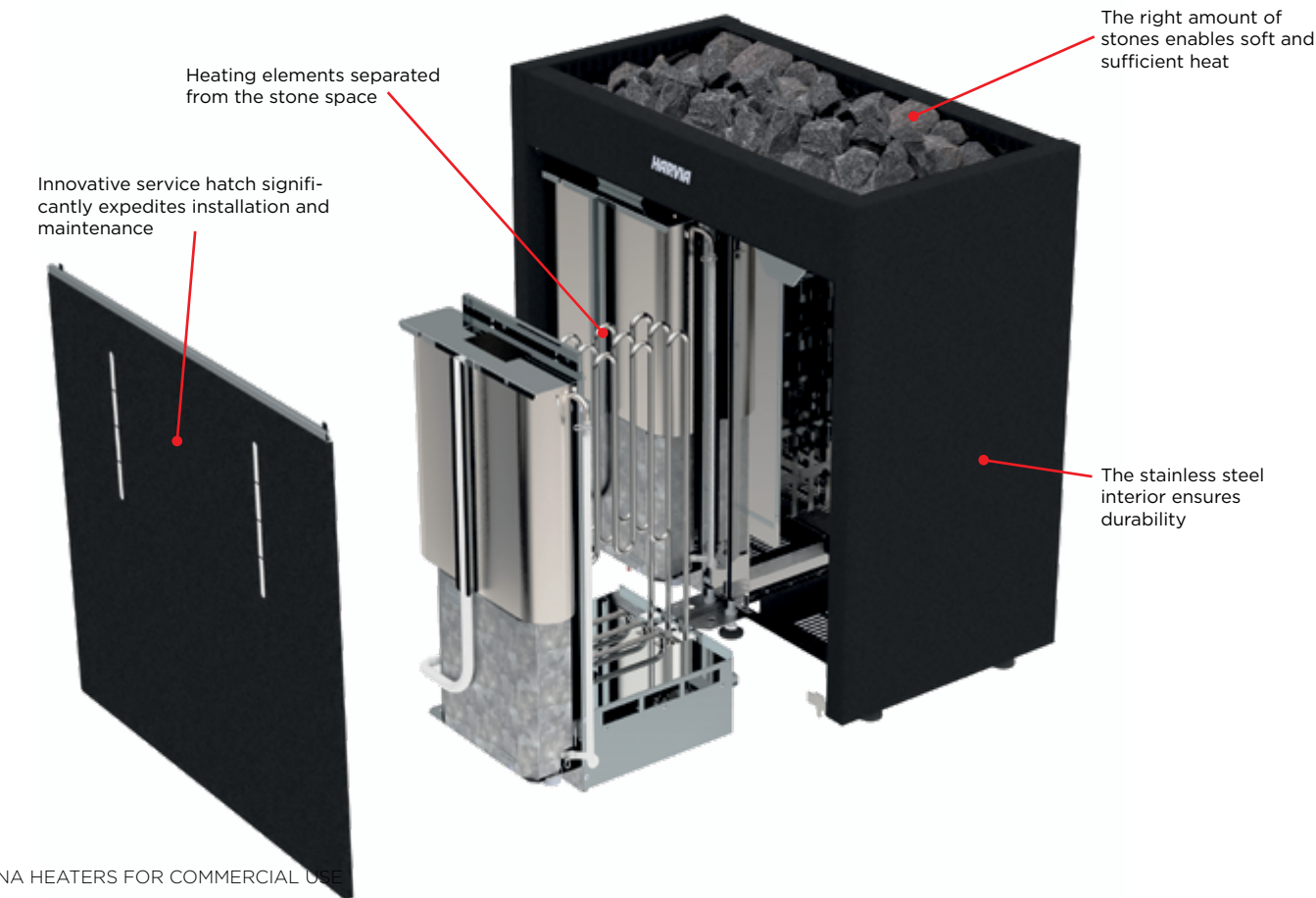


Virta Pro

The Harvia Virta is the perfect choice for a medium-sized or large sauna when you want a sturdy structure, reliability and a sleek and modern design.

Their strong structure and exceptional ease of maintenance make Virta heaters excellently suitable for those who use the sauna often and like to enjoy the steam for long periods of time.

All connections to the Virta heater are made through the maintenance hatch on the front. There is plenty of room around the connections. The heating elements are separated from the stones, which results in a long heating element life span. If you need to replace a heating element, it is a quick and easy task, as you can just pull out the entire heating element module. Other maintenance measures were also taken into account in the heaters' design from the very start.



Virta Pro

- Harvia Virta Pro models provide ample heating power for spa, hotel, apartment building saunas, and more.
- Due to its durable construction, resistance elements grouped into two categories, and easy maintenance, the Virta Pro heater is an excellent choice even for heavy use.
- The heaters are controlled with a separate control unit (not included in the delivery).



Heater	Product number	Heater mounting method	Heater control method	Output kW	Sauna room size min-max. m³	Dimensions width x depth x height mm	Weight kg	Stone capacity max. kg
Virta Pro HL135	HL135400	floor-mounted	E	13,5	11-20	780 X 410 X 810	53	100
Virta Pro HL160	HL160400	floor-mounted	E	15,8	16-25	780 X 410 X 810	53	100
Virta Pro HL220	HL220400	floor-mounted	E	21,6	22-32	780 X 485 X 810	57	140

Virta Pro Combi

- Harvia Virta Pro Combi models are designed for larger saunas where the versatility provided by the steamer is needed.
- Gyms and wellness centers particularly benefit from the heater's features.
- The heaters are controlled with a separate control unit (not included in the delivery).



Heater	Product number	Heater mounting method	Heater control method	Output kW	Sauna room size min-max. m³	Dimensions width x depth x height mm	Weight kg	Stone capacity max. kg
Virta Pro Combi HL135SA	HL135400SA	floor-mounted	E	13,5	11-20	780 X 410 X 810	53	100
Virta Pro Combi HL160SA	HL160400SA	floor-mounted	E	15,8	16-25	780 X 410 X 810	53	100
Virta Pro Combi HL220SA	HL220400SA	floor-mounted	E	21,6	22-32	780 X 485 X 810	57	140

Control unit



Accessories

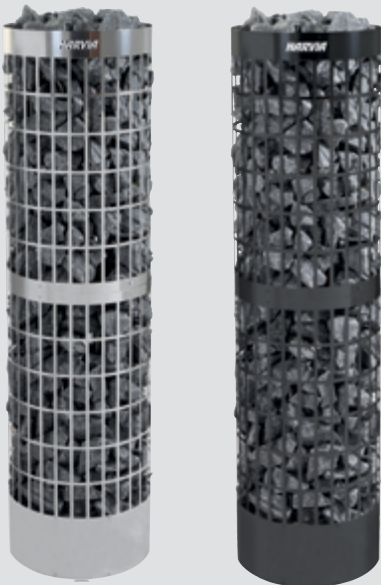




Cilindro Pro

The Cilindro Pro electric heater gives off hearty steam in a family sauna, but the superior features of the heater are especially beneficial to public saunas, hotels and housing companies, for example. The impressive pillar heater contains a massive amount of stones, and the robust heating elements are designed to withstand long operating times. This guarantees plenty of hearty steam for large groups of users.

Heater	Product number	Heater color	Heater mounting method	Heater control method	Output kW	Sauna room size min-max. m ³	Dimensions width x depth x height mm	Weight kg	Stone capacity max. kg
Cilindro Pro PC100E/135E	HPCE100400	Steel	floor-mounted	E	10	9-16	355 x 355 x 1300	18	140
					13,2	10-20			
Cilindro Pro PC100E/135E	HPCE100400M	Black Steel	floor-mounted	E	10	9-16	355 x 355 x 1300	18	140
					13,2	10-20			
Cilindro Pro PC165E/200E	HPCE165400	Steel	floor-mounted	E	16,6	15-25	450 x 450 x 1300	25	220
					19,8	20-30			

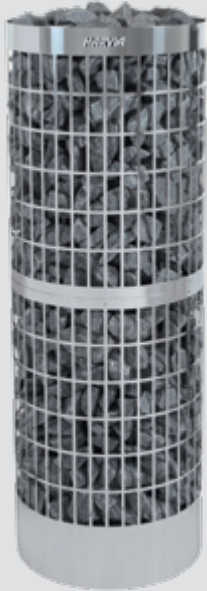


Cilindro Pro Steel
PC100E / PC135E

Cilindro Pro Black Steel
PC100E / PC135E

Cilindro Pro PC100E/135E

- Due to its features, the Cilindro Pro heater is especially suitable for commercial saunas, hotels, and residential buildings.
- This heater features a large amount of stones, ensuring a particularly enjoyable sauna experience.
- The sturdy elements of the heater are designed to withstand long periods of operation.
- Suitable for various settings and installations.
- The heater can be built into the benches and placed near glass walls.
- Controllable by a separate and separately purchased control unit.
- The heater has two power ranges (10 kW and 13.2 kW). The desired power range is selected during installation.



Cilindro Pro Steel
PC165E / 200E

Cilindro Pro PC165E/200E

- Due to its features, the Cilindro Pro heater is especially suitable for commercial saunas, hotels, and residential buildings.
- This heater features a large amount of stones, ensuring a particularly enjoyable sauna experience.
- The sturdy elements of the heater are designed to withstand long periods of operation.
- Suitable for various settings and installations.
- Controllable by a separate and separately purchased control unit.
- The heater has two power ranges (16.6 kW and 19.8 kW). The desired power range is selected during installation.



Control unit



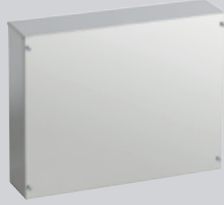
Xenio CX170 WIFI



C170VKK



C400VKK



LTY17
additional power unit

Accessories



Embedding flange
HPC7



Safety railing
HPC6



Protective sheath
HPC5
(11-20 kW)



Autodose
water dispenser
SASL1



Autodose
design piping
SASL2M



Senator

The Harvia Senator is a floor-mounted electric heater specifically designed for those who like to spend a long time in the sauna. The large stone compartment and six heating elements warm up the sauna evenly and efficiently. A constant temperature and soft steam are ideal for enjoying the sauna for longer periods of time.

The Senator is made almost entirely of stainless steel. The heater is well-suited for family saunas or small shared saunas in terraced houses or apartment buildings.

- This stylish, compact heater brings a hint of spa ambience into family saunas and public saunas of apartment buildings and row houses.
- Thanks to its large stone space, the heater warms up evenly and efficiently.
- The heaters are controlled by a separate control unit (not included in the delivery).



Heater	Product number	Heater mounting method	Heater control method	Output kW	Sauna room size min-max. m³	Dimensions width x depth x height mm	Weight kg	Stone capacity max. kg
Senator T9	HSE090400	floor-mounted	E	9,0	8-14	465 x 345 x 660	19	40
Senator T10,5	HSE105400	floor-mounted	E	10,5	9-15	465 x 345 x 660	19	40

Control unit



Xenio CX170



C170VKK

Accessories



Autodose water dispenser SASL1



Autodose design piping SASL2M



Club

The Harvia Club heater is a heavy duty heater with enough steam for a large group of users, from morning till night. Heaters used in large saunas or on a continuous basis must be functional, efficient and comfortable to use. The impressive floor-mounted Club electric heater with a steel outer shell is perfect for this purpose after all, it represents the world-famous quality of Harvia. Equipped with a separate control unit, the Club super heater is excellently suited for apartment buildings, hotels, holiday resorts, sports centres and swimming halls as well as large family saunas. Choose Club when you demand super power and durability from your heater.

The Harvia Club Combi is a combination of an electric heater and a steamer that offers a variety of sauna experiences, such as a traditional sauna, a steam sauna, a herbal sauna or a fragrance sauna.

Heater	Product number	Heater mounting method	Heater control method	Output kW	Sauna room size min-max. m²	Dimensions width x depth x height mm	Weight kg	Stone capacity max. kg
Club K11G	HRKG110400	floor-mounted	E	11	9-16	505 x 430 x 700	25	60
Club K13,5G	HRKG135400	floor-mounted	E	13,5	11-20	505 x 430 x 700	25	60
Club K15	HRKG150400	floor-mounted	E	15	14-24	505 x 430 x 700	25	60
Club Combi K11GS	HRKG110400S	floor-mounted	E	11	9-16	505 x 490 x 700	30	60
Club Combi K13,5GS	HRKG135400S	floor-mounted	E	13,5	11-20	505 x 490 x 700	30	60
Club Combi K15GS	HRKG150400S	floor-mounted	E	15	14-24	505 x 490 x 700	30	60
Club Pro L20	HRL200400	floor-mounted	E	20	18-30	500 x 900 x 730	60	100
Club Pro L26	HRL260400	floor-mounted	E	26	30-46	500 x 900 x 730	60	100
Club Pro L33	HRL330400	floor-mounted	E	33	46-66	500 x 900 x 730	60	100



Club

Club

- The floor-mounted Club is the perfect choice for large saunas that are in continuous use.
- The heaters have the power and durability needed for intensive use.
- Club heaters are controlled with a separate control unit.



Club Combi

- Harvia Club Combi is a combination of an electric heater and a steamer, providing various sauna experiences such as traditional sauna, steam room, herbal sauna, and aromatic sauna.
- The super-powerful Club Combi combination heater is designed to provide a sauna experience for even a large group, from morning till night.
- Made of stainless steel.
- Club Combi heaters are controlled with a separate control unit.



Club Combi



Club Pro

Club Pro

- The Harvia Club Pro heater is designed as a true super heater, capable of providing steam from morning to night for large groups, for example in apartment buildings, hotels, vacation and fitness centers, and spa saunas.
- Made of stainless steel.
- Club Pro heaters are controlled with a separate control unit.



Control unit



Xenio CX170



Xenio Combi CX110C



LTY17 additional power unit

Accessories



Autodose water dispenser SASL1



Autodose design piping SASL2M



Legend Pro

The Harvia Legend Pro provides you with the ultimate sauna experience. This large heater takes you back to the origins of heaters – it is a heater in its purest form. The patinated steel frame of the Harvia Legend contains a large amount of stones that gives off great steam even in large saunas as it heats up. Due to the open structure of the stone compartment, you can throw water on the entire outer surface of the heater. The heat charged in the large number of stones allows you to throw more water even at a lower temperature – you can enjoy delightfully humid steam in your sauna.

Due to its circular shape, the Harvia Legend heater can be installed in the middle of the sauna or embedded into the bench. The heater is controlled by a separate control unit.

Legend Pro PO11

- The Legend's steel frame contains a large amount of stones, ensuring a wonderfully humid and smooth steam bath.
- Due to its round shape, the heater can be installed in the middle of the sauna and built into the bench.
- The heater is controlled by a separate control unit.



Heater	Product number	Heater mounting method	Heater control method	Output kW	Sauna room size min-max. m³	Dimensions width x depth x height mm	Weight kg	Stone capacity max. kg
Legend Pro PO11	HPO1104M	floor-mounted	E	11	9–20	530 x 530 x 740	30	120



Legend Pro PO165

- The massive Legend pillar heater features an especially large amount of stones.
- Suitable for professional use.
- The heat stored in the large amount of stones allows for a more generous release of steam even at low temperatures, ensuring pleasantly moist sauna steam.
- The heater is controlled by a separate control unit.



Heater	Product number	Heater mounting method	Heater control method	Output kW	Sauna room size min-max. m³	Dimensions width x depth x height mm	Weight kg	Stone capacity max. kg
Legend Pro PO165	HPO165400	floor-mounted	E	16,5	16–35	600 x 600 x 830	33	220



Control unit



Xenio CX170 WIFI

Accessories



Safety railing
SASP0240 (Ø 850 mm)
SASP0241 (Ø 780 mm)



Illuminated safety railing
SASP0240L (Ø 850 mm)
SASP0241L (Ø 780 mm)



Autodose
water dispenser
SASL1



Autodose
design piping
SASL2M

CONTROL UNITS

Harvia control units make sauna baths – and especially preparing them – very relaxing. Harvia’s versatile selection of control units is sure to offer something for your needs, from reliable, manually operated one-heater basic units to new-generation digital units that control all the electric functions of your sauna – down to ventilation and lighting. Of course, this also includes perfect temperature adjustments – with one-degree accuracy – for you or a larger group of bathers, exactly when you want it.

Easy upgrading of your sauna with a control unit

Versatile use and connection to the building automation allows for use in many kinds of situations, such as remote use, and separate safety equipment, including door switches and additional safety equipment for the sauna heater. In the future, you will be able to replace just the heater, without replacing your control unit. An option for the control unit should be considered in the planning stage (cabling), as this will allow installation and use of a control unit at a later time.

MyHarvia mobile app

The MyHarvia mobile app allows safe and easy remote control of your sauna’s functions. For many device types, you can use the app to control the sauna heater, lighting, ventilation, and steamer. The MyHarvia mobile app is compatible with Xenio WiFi control units, and it can be downloaded for free from Google Play and the Apple App Store.

MyHarvia



Home saunas

Xenio

The Harvia Xenio control unit provides a modern and subtly stylish interface for controlling the heart of the sauna, be it a traditional electric heater, Combi heater with a steamer or infrared radiator. The compact yet clear touch control panel can be surface-mounted in almost any space – sauna, washroom, dressing room or even the living room. The control panel shows you when the sauna is at the right temperature for bathing.

In combination with the MyHarvia mobile app, the Harvia Xenio WiFi control unit brings your sauna’s functions to your fingertips. The MyHarvia app provides a safe and easy way of remotely controlling devices connected to the Xenio WiFi control unit, such as the sauna heater, lighting, ventilation, and steamer. You can download the MyHarvia mobile app free of charge from Google Play or the Apple App Store.



C series

The control units of Harvia C series are manually used and reliable basic control units that allow you to easily control the temperature and the heater’s on-time from 1 to 12 hours, depending on the needs of the sauna-goers. The control units can be used to control the heater of both family saunas and public saunas (2.3–17 kW). Reliable Harvia quality. The delivery includes a separate temperature sensor with a 4-metre cable.



Senlog

Harvia Senlog is a simply stylish control unit. Senlog offers an easy interface for controlling the heart of a sauna, the sauna heater. You can install the control panel in any dry space. With the Senlog control unit, you can control not only the heater but also the lighting and ventilation in the sauna room.



Commercial saunas

C170VKK







The Harvia C170VKK control unit with a week timer makes using the heater and the entire sauna very convenient. The new model is easy to install when replacing the old C150VKK – you have the use of old familiar features and functional new features in one. Designed for communal saunas, such as saunas in housing companies, spas and swimming halls. The control unit contains versatile week timer control and remote start features. The easy-to-use touchscreen allows you to control all the necessary functions, such as the electric sauna heater, lighting, ventilation, electronic locks and the safety device connection.









C400VKK

Harvia C400VKK is an electric-sauna-heater control unit for professional use. With its week timer, remote starting, and a wide range of functions, it enables versatile use of the sauna premises. The unit is suitable for max. 40 kW heaters. Installation is easy. Harvia C400VKK is a redesigned version of the C260 control unit that is considered a classic among professionals. In addition to the electric heater, the control unit can be used to control lighting, electric locks, and ventilation.



FEATURES	SEPARATE CONTROL AND POWER UNIT					
	Xenio CX170	Xenio WiFi CX170XW	Xenio CX110	Xenio Combi CX110C	Xenio Combi wifi CX110CXW	Xenio Infra CX36I
						
Product number	CX170400	CX1704XW	CX110400	CX110400C	CX1104CXW	CX36230I
Intended use	Home saunas	Home saunas	Home saunas	Home saunas	Home saunas	Home saunas Commercial saunas
Maximum control power	17 kW 3N- 400 V	17 kW 3N- 400 V	11 kW 3N- 400 V	11 kW 3N- 400 V	11 kW 3N- 400 V	3,6 kW 1N- 230 V
Electric heater control	X	X	X	X	X	
Combi heater control				X	X	
Infrared sauna control						X
Evaporator control				X	X	
Lighting control	X	X	X	X	X	X
Ventilator control	X	X		X	X	
Operation time adjustment range	1-6 h / 0-12 h	1-6 h / 0-12 h	1-6 h / 0-12 h	1-6 h / 0-12 h	1-6 h / 0-12 h	1-12 h
Temperature setting	X	X	X	X	X	X
Preselection timer	0-12 h	0-12 h	0-12 h	0-12 h	0-12 h	
Air humidity setting				X	X	
Settings memory in case of power outage	X	X	X	X	X	X
Screen	Digital	Digital	Digital	Digital	Digital	Digital
Fault diagnosis	X	X	X	X	X	X
Digital thermometer	X	X	X	X	X	X
Remote control (e.g. home automation)	X	X		X	X	
Remote control (MyHarvia)	Option CX001WIFI	X		Option CX001WIFI	X	
Weekly timer		X		X		
Door switch control	X	X		X	X	
Safety switch control	X	X		X	X	
Child lock	X	X		X	X	
Additional power unit	LTY17	LTY17		LTY17C	LTY17C	LX3620IL
Temperature sensor	X	X	X	X	X	X
Humidity sensor				X	X	
Dual sensor system (temperature can be measured with multiple sensors)	X	X		X	X	

CONTROL AND POWER UNIT COMBINED					
SENLOG CF9	SENLOG combi CF9C	C150	C170VKK	C400VKK	C105S Logix
					
CF9400	CF9400C	C150400	C170400VKK	C400400VKK	C105400S
Home saunas	Home saunas	Commercial saunas	Commercial saunas	Commercial saunas	Commercial saunas
9 kW	9 kW	17 kW 3N- 400 V	17 kW 3N- 400 V	max. 40 kW 2x (400 V 3N-)	Max. 10,5 kW (K15GS, max. 15,5 kW) 400 V 3N-
X	X	X	X	X	X
	X				X
	X				X
X	X	X	X	X	X
			X	X	X
6 h	6 h	1-12 h	1-6 h / 0-12 h	1-6 h / 0-12 h	0-12 h
X	X	X	X	X	X
		0-12 h			0-12 h
	X				X
			X	X	
Analog	Analog	Digital	Digital	Digital	Digital
		X	X	X	X
		X	X	X	X
			X	X	X
			X	X	
			X	X	
			LTY17	LTY17	LTY17 / LTY17C
X	X	X	X	X	X
			X	X	

HEATER ACCESSORIES

Heater accessories increase comfort and safety in the sauna. There are many safety-enhancing accessories available for electric heaters such as protective sheaths, safety railings, and embedding flanges. With additional accessories, you increase the comfort and safety of your sauna.

1. Safety switch

The safety switch is installed above the sauna heater. The switch always monitors the heater's operation when the heater is turned on. It switches the power off immediately if anything falls on the safety device and stops the sauna heater from switching on.

2. Safety railing

Harvia's safety railings make your sauna safer. Harvia offers safety railings for several of its heater models, with or without lighting. The LED strip on the illuminated safety railing accentuates the heater beautifully.

3. Protective sheath

The protective sheath of a sauna heater is attached directly to the side of the heater. The sheath conforms to the shape of the heater and creates a smoother whole. A protective sheath reduces safety distances, allowing the heater to be installed nearer to the sauna's wall or benches in a fire safe manner. Depending on the heater model, one or two protective sheaths can be attached.

4. Embedding flange

This stylish stainless-steel embedding flange provides protection against thermal radiation and enables a shallower bench embedding. In addition to providing protection against thermal radiation, the illuminated embedding flange functions as an interior element that beautifully accentuates the heater.

5. Extension base

This additional platform helps you better display the impressive Harvia pillar heater (23 cm). It is easy to install the heater or stove firmly on the platform. Particularly well-suited for saunas that feature a stove or heater embedded into the bench. Compatible with the following electric heaters and stoves: Legend (6.8–10.8 kW) Glow and Cilindro (7–9 kW). Width: 310 mm. Height: 230 mm. Material: stainless steel.

6. Door sensor system

The door sensor system is easy to connect to the control unit, ensuring the safe remote use of the sauna in accordance with EU standards. The door sensors guarantee that the sauna room is safe before the electric heater is turned on. The system is installed discreetly onto the sauna door.



Add more comfort to commercial saunas

Autodose sauna water dispenser

Forget the bucket and ladle, here comes an automated water dispenser. Just relax and press a button to apply water onto the stones – with or without a fragrance. Spa saunas benefit from the even air humidity and the simplified approach to throwing sauna water.

The device consists of a main unit and operating buttons. The delivery includes one button for water and another button for a water-fragrance mixture. The device works either automatically at defined intervals or at the press of a button. When the device is in automatic mode and water is applied by pushing the button, the timer for the dosing interval restarts.

Design piping for the Autodose automated water dispenser

The stylish and modern Autodose design heater water piping is installed above the sauna heater. An unobtrusive special nozzle will direct the water on a large area, providing a fantastic sauna bath.

The simple design of the piping is well-suited to many different sauna interiors. The piping can also be integrated through the sauna's wall panel, thus hiding the piping and maintaining a clearer sauna interior.

The design piping is suited to heaters of different sizes and its distance can be adjusted based on the size of the heater. The design piping is compatible with the Harvia Autodose automated water dispenser, but it can also be used without (requires separate water control).



Sauna heater stones

Olivine diabase

Durable in structure and high in specific gravity, olivine diabase retains and dissipates heat well, offering an excellent steam bath.

- AC3000, Ø 5–10 cm, 20 kg/box
- AC3020, Ø 10–15 cm, 20 kg/box

Elite Pro Heavy Duty

Elite Pro Heavy Duty sauna heater stones are made from the finest Finnish olivine diabase and heat-treated at approximately 1,000 °C, resulting in a long service life and making them an excellent choice for frequently heated public saunas.

- AC3050, Ø 5–10 cm, 20 kg/box
- AC3055, Ø 10–15 cm, 20 kg/box

Black vulcanite

These dark sauna heater stones are made of fine-grained, dark grey volcanic rock. When wet, they turn black, adding a unique touch to the look of the sauna.

- AC3040, Ø 5–10 cm, 20 kg/box
- AC3045, Ø 10–15 cm, 20 kg/box

Rounded sauna heater stones

The rounded olivine diabase sauna heater stones resemble round natural stones that can be found for example in larger rapids, adding an impressive finish to the surface layer of the sauna heater. If you have a heater with a small stone space, whether it is an electric heater or woodburning stove, we recommend round stones on top of split-face stones, as this increases the evaporation surface lower down in the stone space. This prevents the water from flowing directly past the stone space. This combination enables a pleasant steam and efficient heat generation.

- R-991, Ø 5–10 cm, 15 kg/box
- R-995, Ø 10–15 cm, 20 kg/box

Decorative stones

Red Granite decorative stone for atmosphere

Red granite is an impressive decorative stone that ensures a soft steam bath and a warm atmosphere in the sauna.

- AC5000, Ø 5–10 cm, 10 kg/box

White decorative stones to crown the sauna heater

White decorative stones ensure a soft steam bath and add a fresh and clean touch to the sauna.

- AC4000, Ø 5–10 cm, 10 kg/box



Annual change of sauna stones:

- extends the service life of the heater
- saves energy
- keeps the sauna clean
- guarantees the best sauna experience



SAUNA ACCESSORIES

Helmi sauna accessories



Helmi sauna accessories set terracotta, SA010R



Helmi sauna accessories set ivory, SA010V



Helmi sauna accessories set chocolate, SA010B



Helmi sauna bucket terracotta, SAC01001



Helmi sauna bucket ivory, SAC01003



Helmi sauna bucket chocolate, SAC01002



Helmi sauna ladle terracotta, SAC01004



Helmi sauna ladle ivory, SAC01006



Helmi sauna ladle chocolate, SAC01005



Helmi thermo-hygro meter terracotta, SAC01007



Helmi thermo-hygro meter ivory, SAC01009



Helmi thermo-hygro meter chocolate, SAC01008



Helmi sandglass terracotta, SAC01010



Helmi sandglass ivory, SAC01012



Helmi sandglass chocolate, SAC01011



Sauna accessories set, Black steel SA007



Sauna accessories set, steel SA006



Sauna bucket and ladle SAC01011



Legend bucket SASP0100

Legend ladle SASP0101



Legend firewood rack SASP0102



Find more sauna accessories at www.harvia.com



Sauna & steam scent set 5x10 ml SAC25100



Sauna scent 400 ml Eucalyptus SAC25021, Pine SAC25023, Peppermint SAC25024, Birch SAC25022, Tar SAC25025



Thermo-hygrometer A-210-THS



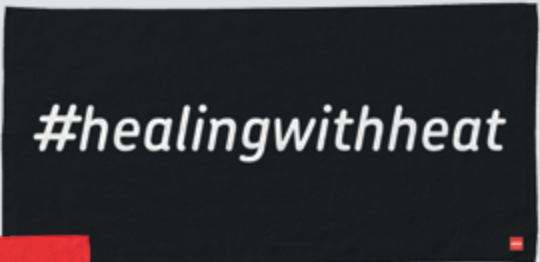
Legend thermometer SASP0104



Legend clothes hanger SASP0103



Harvia logo towel, 70x140 cm, SAC80401 35x55 cm, SAC80402



#healingwithheat towe, 90x170 cm SAC80400



Sauna care set SAC25070



Sauna heater cleanser 500 ml SAC25041



Sauna Cleanser 500 ml SAC25040

TECHNICAL DATA

Heater	Product number	Output kW	Recommended sauna room size min-max. m³	Sauna room height min. mm	Dimensions width x depth x height mm	Weight kg	Stone capacity max. kg	Safety distances to burning materials mm					Accessories			Control unit needed
								sides	front	back	ceiling	floor	Safety railing	Protective sheat	Embedding flange	
Cilindro PC66, STEEL	HPC66400	6,6	5-9	1900	255 x 255 x 1340	11	75	100	100	30	540	50	HPC10/HPC10L			
Cilindro PC66, BLACK STEEL	HPC66400M	6,6	5-9	1900	255 x 255 x 1340	11	75	100	100	30	540	50	HPC10/HPC10L			
Cilindro PC66E, STEEL	HPCE66400	6,6	5-9	1900	255 x 255 x 1340	11	75	100	100	30	540	50	HPC10/HPC10L			CX1704XW
Cilindro PC66E, BLACK STEEL	HPCE66400M	6,6	5-9	1900	255 x 255 x 1340	11	75	100	100	30	540	50	HPC10/HPC10L			CX1704XW
Cilindro PC70, STEEL	HPC700400	6,8	6-10	1900	320 x 320 x 930	10	80	100	100	100	950	50	HPC3/HPC3L	HPC11M	HPC2/HPC2L/ HPC1/HPC1M	
Cilindro PC70, BLACK STEEL	HPC700400M	6,8	6-10	1900	320 x 320 x 930	10	80	100	100	100	950	50	HPC3/HPC3L	HPC11M	HPC2/HPC2L/ HPC1/HPC1M	
Cilindro PC70XE, STEEL	HPC704XE	6,8	6-10	1900	320 x 320 x 930	10	80	100	100	100	950	50	HPC3/HPC3L	HPC11M	HPC2/HPC2L/ HPC1/HPC1M	
Cilindro PC70XE, BLACK STEEL	HPC7004MXE	6,8	6-10	1900	320 x 320 x 930	10	80	100	100	100	950	50	HPC3/HPC3L	HPC11M	HPC2/HPC2L/ HPC1/HPC1M	
Cilindro PC90, STEEL	HPC900400	9,0	8-14	1900	320 x 320 x 930	10	80	100	100	100	950	50	HPC3/HPC3L	HPC11M	HPC2/HPC2L/ HPC1/ HPC1M	
Cilindro PC90 BLACK STEEL	HPC900400M	9,0	8-14	1900	320 x 320 x 930	10	80	100	100	100	950	50	HPC3/HPC3L	HPC11M	HPC2/HPC2L/ HPC1/ HPC1M	
Cilindro PC90XE, STEEL	HPC904XE	9,0	8-14	1900	320 x 320 x 930	10	80	100	100	100	950	50	HPC3/HPC3L	HPC11M	HPC2/HPC2L/ HPC1/ HPC1M	
Cilindro PC90XE, BLACK STEEL	HPC9004MXE	9,0	8-14	1900	320 x 320 x 930	10	80	100	100	100	950	50	HPC3/HPC3L	HPC11M	HPC2/HPC2L/ HPC1/ HPC1M	
Cilindro PC110XE, STEEL	HPC1104XE	10,8	9-18	1900	365 x 365 x 1070	13	120	100	100	100	830	30	HPC4/HPC4L		HPC2/HPC2L/ HPC1/HPC1M	
Cilindro Pro PC100E/135E, STEEL	HPCE100400	10	9-16	1900	355 x 355 x 1300	18	140	100	100	100	950	50	HPC6	HPC5	HPC7	CX1704XW/C170400VKK/ C400400VKK
Cilindro Pro PC100E/PC135E, BLACK STEEL	HPCE100400M	13,2	10-20	1900	355 x 355 x 1300	18	140	100	100	100	950	50	HPC6	HPC5	HPC7	CX1704XW/C170400VKK/ C400400VKK
Cilindro Pro PC165E/PC200E	HPCE165400	16,6	15-25	2100	450 x 450 x 1300	25	220	100	100	100	750	0			HPC7	CX1704XW/C170400VKK/ C400400VKK
Cilindro Pro PC165E/PC200E	HPCE165400	19,8	20-30	2100	450 x 450 x 1300	25	220	100	100	100	750	0			HPC7	CX1704XW/C170400VKK/ C400400VKK
Club K11G	HRKG110400	11,0	9-16	1900	505 x 430 x 700	25	60	50	50	70	1200	0				CX170400/C170400VKK/C400400VKK
Club K13,5G	HRKG135400	13,5	11-20	2100	505 x 430 x 700	25	60	50	50	100	1400	0				CX170400/C170400VKK/C400400VKK
Club K15	HRKG150400	15,0	14-24	2100	505 x 430 x 700	25	60	50	50	100	1400	0				CX170400/C170400VKK/C400400VKK
Club Pro L20	HRL200400	20,0	18-30	2100	500 x 900 x 730	60	100	100	100	160	1400	0				CX170400/C170400VKK/C400400VKK
Club Pro L26	HRL260400	26,0	30-46	2200	500 x 900 x 730	60	100	100	100	160	1500	0				CX170400/C170400VKK/C400400VKK
Club Pro L33	HRL330400	33,0	46-66	2200	500 x 900 x 730	60	100	100	100	200	1500	0				CX170400/C170400VKK/C400400VKK
Delta D23	HD234M	2,3	1,3-2,5	1700	340 x 200 x 635	8	11	10	10	0	900	150	HD3M		HD1	
Delta D23E	HDE234M	2,3	1,3-2,5	1700	340 x 200 x 635	8	11	10	10	0	900	150	HD3M		HD1	CX110400
Delta D36	HD364M	3,6	2-4,5	1700	340 x 200 x 635	8	11	10	10	0	900	150	HD3M		HD1	
Delta D36E	HDE36M	3,6	2-4,5	1700	340 x 200 x 635	8	11	10	10	0	900	150	HD3M		HD1	CX110400
Forte AFB6, STEEL	HAFB600400S	6,0	7-12	1900	500 x 535 x 830	30	100	20	20	30	1000	0			HAF1	
Forte AFB6, MUSTA	HAFB600400M	6,0	7-12	1900	500 x 535 x 830	30	100	20	20	30	1000	0			HAF1	
Forte AFB9, STEEL	HAFB900400S	9,0	10-15	1900	500 x 535 x 830	30	100	20	20	30	1000	0			HAF1	
Forte AFB9, MUSTA	HAFB900400M	9,0	10-15	1900	500 x 535 x 830	30	100	20	20	30	1000	0			HAF1	
Glow corner TRC70XE	HTRC704XE	6,8	6-10	1900	330 x 330 x 1100	16,3	50	0	100	0	800	20	HTRC3/HTRC3L		HTRC1	
Glow corner TRC90XE	HTRC904XE	9,0	8-14	1900	330 x 330 x 1100	19,7	50	0	100	0	800	20				
Glow TRT70XE	HTRT704XE	6,8	6-10	1900	364 x 364 x 1076	14	80	100	100	100	850	50	HTRT3		HPC2/HPC2L	
Glow TRT90XE	HTRT904XE	9,0	8-14	1900	364 x 364 x 1076	14	90	100	100	100	850	50	HTRT3		HPC2/HPC2L	
Hidden heater HH6	HH060400	6.0	6-10	1900	400 x 360 x 640	33	15	80	75	0	1070	0				C170400VKK7CX110400/CX170400
Hidden heater HH9	HH090400	9.0	10-14	1900	400 x 360 x 640	33	15	80	90	0	1070	0				C170400VKK7CX110400/CX170400
Hidden heater HH12	HH120400	12	12-17	1900	400 x 360 x 640	33	15	100	120	0	1070	0				C170400VKK7CX110400/CX170400
Legend PO110E	HPOE1104	11	9-18	1900	400 x 360 x 640	18,5	100	100	100	100	840	50 (1N-) 30 (3N-)	HPO3/HPO3L	HPO11	HPO2	CX1704XW
Legend PO110XW	HPO1104XW	11	9-18	1900	1080 x 325 x 325	18,5	100	100	100	100	840	50 (1N-) 30 (3N-)	HPO3/HPO3L	HPO11	HPO2	
Legend PO70E	HPOE704	6,8	6-10	1900	1080 x 325 x 325	18,5	100	100	100	100	840	50 (1N-) 30 (3N-)	HPO3/HPO3L	HPO11	HPO2	CX1704XW
Legend PO70XW	HPO704XW	6,8	6-10	1900	1080 x 325 x 325	18,5	100	100	100	100	840	50 (1N-) 30 (3N-)	HPO3/HPO3L	HPO11	HPO2	
Legend Pro PO11	HPO1104M	11	9-20	1900	530 x 530 x 740	30	120	100	100	100	1100	0	SASPO240/ SASPO240L			CX1704XW
Legend Pro PO165	HPO165400	16,5	16-35	2100	600 x 600 x 830	33	220	100	100	100	1250	0	SASPO241/ SASPO241L			CX1704XW

Please check the product manual for updated information before use.

Heater	Product number	Output kW	Recommended sauna room size min-max. m²	Sauna room height min. mm	Dimensions width x depth x height mm	Weight kg	Stone capacity max. kg	Safety distances to burning materials mm					Accessories			Control unit needed
								sides	front	back	ceiling	floor	Safety railing	Protective sheat	Embedding flange	
Moderna V45XE	HVE454XEM	4,5	3-6	1900	410 x 310 x 580	15	20	35	20	0	1100	150				
Moderna V60XE	HVE604XEM	6,0	5-8	1900	410 x 310 x 580	15	20	40	30	0	1100	150				
Moderna V80XE	HVE804XEM	8,0	7-12	1900	410 x 310 x 580	15	20	70	30	0	1100	150				
Senator T9	HSE090400	9,0	8-14	1900	465 x 345 x 660	19	40	50	50	150	1250					CX170400/C150400
Senator T10,5	HSE105400	10,5	9-15	1900	465 x 345 x 660	19	40	50	50	180	1400					CX170400/C150400
Spirit SP60E	HSPE604M	6,0	5-8	1900	385 x 334 x 687	15	60	60	60	0	900	100	SP3		HSP1	Xenio CX110
Spirit SP60XW	HSP604MXW	6,0	5-8	1900	385 x 334 x 687	15	60	60	60	0	900	100	SP3		HSP1	
Spirit SP90E	HSPE904M	9,0	8-14	1900	385 x 334 x 687	15	60	80	80	0	900	100	SP3		HSP1	Xenio CX110
Spirit SP90XW	HSP904MXW	9,0	8-14	1900	385 x 334 x 687	15	60	80	80	0	900	100	SP3		HSP1	
The Wall Combi SW45S, STEEL	HSW450400S	4,5	5-10	1900	380 x 355 x 710	16,0	20	35	20	0	1200	80		HSW5/HSW5L	HSW1	CX110400C
The Wall Combi SW70S, STEEL	HSW700400S	7,0	8-14	1900	380 x 355 x 710	16,8	20	70	20	0	1200	80		HSW5/HSW5L	HSW1	CX110400C
The Wall Combi SW90S, STEEL	HSW900400S	9,0	9-18	1900	380 x 355 x 710	16,8	20	80	20	0	1200	80		HSW5/HSW5L	HSW1	CX110400C
The Wall SW45, STEEL	HSW450400	4,5	3-6	1900	430 x 260 x 610	11	20	35	20	0	1200	80		HSW5/HSW5L	HSW1	
The Wall SW45E, STEEL	HSWE450400	4,5	3-6	1900	430 x 260 x 610	11	20	35	20	0	1200	80		HSW5/HSW5L	HSW1	CX1704XW
The Wall SW45, BLACK STEEL	HSW450400M	4,5	3-6	1900	430 x 260 x 610	11	20	35	20	0	1200	80		HSW5/HSW5L	HSW1	
The Wall SW45E, BLACK STEEL	HSWE450400M	4,5	3-6	1900	430 x 260 x 610	11	20	35	20	0	1200	80		HSW5/HSW5L	HSW1	CX1704XW
The Wall SW60, STEEL	HSW600400	6,0	5-8	1900	430 x 260 x 610	12	20	40	40	0	1200	80		HSW5/HSW5L	HSW1	
The Wall SW60E, STEEL	HSWE600400	6,0	5-8	1900	430 x 260 x 610	12	20	40	40	0	1200	80		HSW5/HSW5L	HSW1	CX1704XW
The Wall SW60, BLACK STEEL	HSW600400M	6,0	5-8	1900	430 x 260 x 610	12	20	40	40	0	1200	80		HSW5/HSW5L	HSW1	
The Wall SW60E, BLACK STEEL	HSWE600400M	6,0	5-8	1900	430 x 260 x 610	12	20	40	40	0	1200	80		HSW5/HSW5L	HSW1	CX1704XW
The Wall SW80, STEEL	HSW800400	8,0	7-12	1900	430 x 260 x 700	14	20	70	30	0	1200	80		HSW5/HSW5L	HSW1	
The Wall SW80, BLACK STEEL	HSW800400M	8,0	7-12	1900	430 x 260 x 700	14	20	70	30	0	1200	80		HSW5/HSW5L	HSW1	
The Wall 90E, STEEL	HSWE900400	9,0	8-14	1900	380 x 260 x 700	20	20	80	30	0	1200	80				CX1704XW
The Wall 90E, BLACK STEEL	HSWE900400M	9,0	8-14	1900	380 x 260 x 700	20	20	80	30	0	1200	80				CX1704XW
Topclass Combi KV50SE	HKSE500400	5.0	3-6	1900	410 x 280 x 600	16	25	35	20	0	1100	150				CX110400C/C105400S
Topclass Combi KV60SE	HKSE600400	6.0	5-8	1900	410 x 280 x 600	16	25	50	60	0	1100	150				CX110400C/C105400S
Topclass Combi KV80SE	HKSE800400	8.0	7-12	1900	410 x 280 x 600	16	25	100	90	0	1100	150				CX110400C/C105400S
Topclass Combi KV90SE	HKSE900400	9.0	8-14	1900	410 x 280 x 600	16	25	120	100	0	1100	150				CX110400C/C105400S
Vega BC45	HBC450400S	4,5	3-6	1900	480 x 310 x 540	11	20	50	20	0	1100	100				
Vega BC60	HCB600400S	6,0	5-8	1900	480 x 310 x 540	11	20	50	30	0	1100	100				
Vega BC80	HCB800400S	8,0	7-12	1900	480 x 310 x 540	11	20	100	30	0	1100	100				
Vega Compact BC23	HCB230400S	2,3	1,3-2,5	1700	365 x 295 x 505	7	12	20	10	0	900	80				
Vega Compact BC35	HCB350400S	3,5	2-4,5	1700	365 x 295 x 505	7	12	30	10	0	900	80				
Virta Combi HL70S	HL700400S	6,8	5-10	1900	415 x 410 x 810	27	50	30	30	30	1100	0	HL3M		HL1M	CX110400C
Virta Combi HL70SA	HL700400SA	6,8	5-10	1900	415 x 410 x 810	27	50	30	30	30	1100	0	HL3M		HL1M	CX110400C
Virta Combi HL90S	HL900400S	9,0	8-14	1900	415 x 410 x 810	27	50	30	30	30	1100	0	HL3M		HL1M	CX110400C
Virta Combi HL90SA	HL900400SA	9,0	8-14	1900	415 x 410 x 810	27	50	30	30	30	1100	0	HL3M		HL1M	CX110400C
Virta Combi HL110S	HL110400S	10,8	9-18	1900	415 x 485 x 810	29	70	30	30	30	1100	0	HL3L		HL1M	CX110400C
Virta Combi HL110SA	HL110400SA	10,8	9-18	1900	415 x 485 x 810	29	70	30	30	30	1100	0	HL3L		HL1M	CX110400C
Virta HL70	HL700400	6,8	5-10	1900	415 x 340 x 810	21	50	30	30	30	1100	0	HL3S		HL1M	CX1704XW
Virta HL90	HL900400	9,0	8-14	1900	415 x 340 x 810	21	50	30	30	30	1100	0	HL3S		HL1M	CX1704XW
Virta HL110	HL110400	10,8	9-18	1900	415 x 410 x 810	24	70	30	30	30	1100	0	HL3M		HL1M	CX1704XW
Virta Pro Combi HL135SA	HL135400SA	13,5	11-20	2100	780 x 410 x 810	53	100	50	50	50	1290	0	HL4M			CX110400C
Virta Pro Combi HL160SA	HL160400SA	15,8	16-25	2100	780 x 410 x 810	53	100	80	0	80	1290	0	HL4M			CX110400C
Virta Pro Combi HL220SA	HL220400SA	21,6	22-32	2100	780 x 485 x 810	57	140	80	0	80	1290	0	HL4L			CX110400C
Virta Pro HL135	HL135400	13,5	11-20	2100	780 x 340 x 810	41	100	50	50	50	1290	0	HL4S			CX1704XW
Virta Pro HL160	HL160400	15,8	16-25	2100	780 x 340 x 810	41	100	80	80	80	1290	0	HL4S			CX1704XW
Virta Pro HL220	HL220400	21,6	22-32	2100	780 x 410 x 810	47	140	80	80	80	1290	0	HL4M			CX1704XW

Please check the product manual for updated information before use.



HARVIA

Sauna & Spa

Established in 1950 by Tapani Harvia, the company bearing his name has grown into an international sauna and spa company. We can provide everything you need for your sauna. In a Harvia sauna, the key elements of nature – wood, stone and water – combine to create an oasis of relaxation. The sauna is a comprehensive experience to enjoy wellbeing arising from Finnish sauna traditions. The gentle heat of sauna has a positive effect on your health. Its beneficial effects include better blood circulation, lower risk of heart disease, muscle recovery, better sleep, reduced stress and better relaxation both physically and mentally.

Your local dealer:



@harviaglobal

Harvia | P.O. Box 12 | FI-40951 Muurame, FINLAND | Tel. +358 207 464 000 | harvia@harvia.fi | www.harvia.com