

TTABLES

Quinti®

The sculptural shape of the new TTABLES coffee tables make them ideal for any space. The perfect balance between geometry and function, linearity and versatility is the main characteristic of this model. The table can be placed as a single piece and by placing the two formats side by side. TTABLES lives at the service of the armchair or sofa, and offer the user a convenient and comfortable surface.



BASE

The base is made of 2 mm thick sheet metal. worked with a calendering machine to take on a cylindrical shape. Inside the cylinder there are laser cut metal plates; the upper plate with the connections for the top, while the lower plate with the slots for the feet.

The plates welded inside the base also have the function of stiffening the cylindrical sheet.

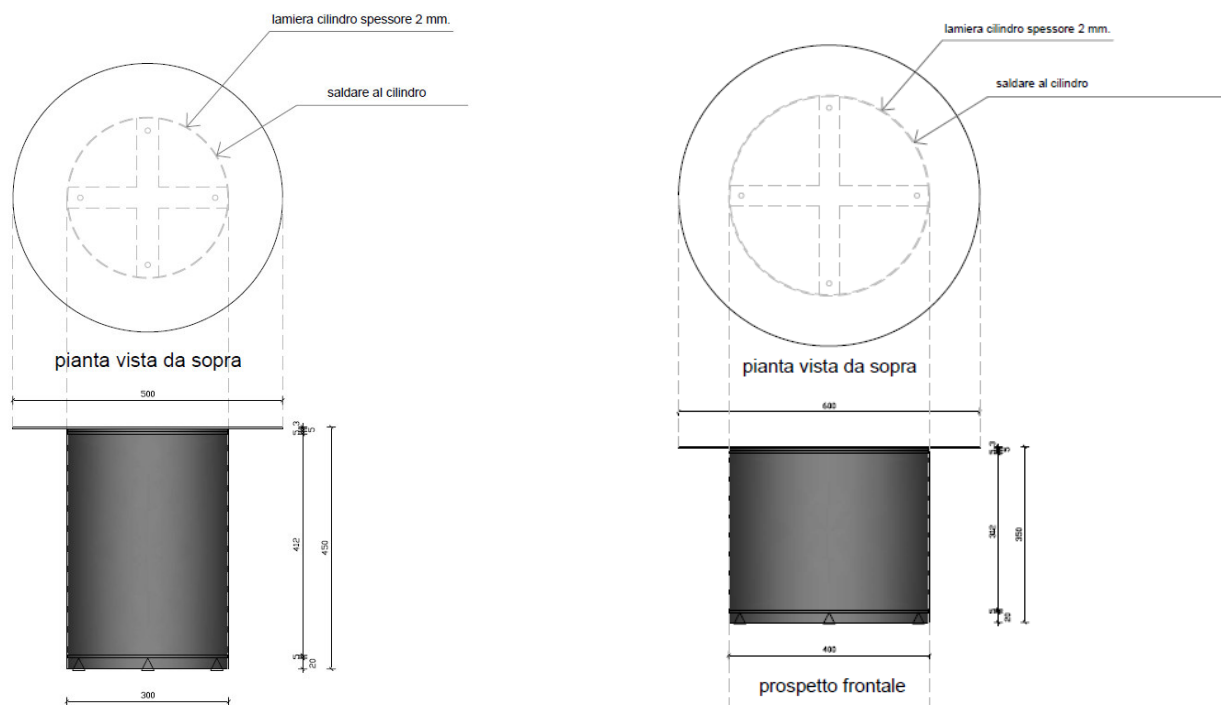
The feet on the floor are adjustable in height and are positioned so that when screwed in, they still leave the cylinder off the ground by a few millimetres.

TOP

The top is made of 3 mm thick sheet metal. worked with a laser cutting machine to take on a circular shape. A laser cut counterplate is welded to the bottom of the top for fixing to the cylinder plate.

The thickness of the top of 3 mm. allows it not to flex even when loaded with considerable weights.

DIMENSIONS



FINISHING

The table can be painted with black, white or various Quinti colours.
The painting is made with epoxy powders and treated in the drying oven at 180 degrees.

The coffee table is offered in two formats:

- A) Cylinder diameter 40 cm. / Height 35cm. / Top diameter 60 cm.
- B) Cylinder diameter 30 cm. / Height 45cm. / Top diameter 50 cm.

USAGE AND CARE

METALS

Cleaning: both steel and aluminum surfaces, and the painted ones, have to be cleaned using a soft cloth soaked in tepid water. For the most persistent stains it is possible to dilute mild soap with water moderately. Dry always after the cleaning, using a soft cloth of deer-hide. Do not use cleaning products for steel, chlorine, bleach or other strong products. It is not recommended to use abrasive, scourers, which can scratch the metal surfaces.

Usage: pay attention to the food stains as coffee, coke, fruit juices that can make indelible marks on the surfaces.

WARRANTY

QUINTI guarantees the products will maintain their properties for 6 years from delivery, except normal usury and provided that they will be used according to the guidelines given. QUINTI will replace, free of charge, any product found non-compliant with this warranty, without incurring any other liability of sort. Components, external accessories or materials supplied by the buyer and applied to the products in order to customize them will not be supported by the guarantee. For an optimal maintenance of the products and to keep unchanged the characteristics of the materials with which they are made, some simple attentions are necessary.