



**ART GALLERY SOCIETY OF NEW SOUTH WALES**

**2013 ANNUAL REVIEW**

For the year ended 31 December 2013

---

## Art Gallery Society of New South Wales Annual Review 2013

<b>CONTENTS</b>	<b>PAGE</b>
2013 – The year in review	3 - 8
Councillors	9
Staff	10
Collection Circle and Acknowledged Donors	11 - 15
Sponsors	16
Corporate Members	16 - 17
Contempo Committee	18
Community Ambassadors	19
Volunteer Guides	20 - 21
Volunteer Task Force	22 - 23
2013 Acquisitions	24 - 26

---

## **2013 – 60 Years of Support**

### **The year in review**

2013 was a celebratory year for the Art Gallery Society, signifying 60 years of support for the Art Gallery of NSW. Through the efforts of a small group of committed, art loving Sydney-siders in 1953, the Society was established to support the Gallery in various different ways and to help build an audience and secure the Gallery on Sydney's cultural map.

A proud tradition of the Society is its acquisition policy to raise funds to purchase works of art for the Gallery's permanent collections. It made its first purchase in 1959 with the acquisition of Godfrey Miller's painting *Nude and the Moon*. Since then the Society has acquired more than 230 artworks across all curatorial areas and funded several conservation projects. For many years the Society has also provided a scholarship research grant for Gallery staff to travel and research their particular speciality, a much appreciated element of the Society's support.

Since its inception the Society has taken on an educative role by presenting lectures, films, workshops and the like to enrich and enhance member's experience and appreciation of art. In 2013 the Society presented a program of over 500 events, enjoyed by 43,000 attendees, a service to members of which the Society is rightly proud.

### **60<sup>th</sup> Anniversary Celebrations**

To celebrate the 60<sup>th</sup> anniversary milestone, the Society embarked on a number of projects and events.

#### *Art Lovers: the story of the Art Gallery Society of NSW 1953 – 2013*

Former executive director, Judith White, was commissioned to write a history of the Society, to chronicle and commemorate the organisation from its beginnings to the present. A beautifully designed and produced book by the Gallery's designer Jo Hein was the result, which included illustrations of the more than 200 artworks acquired for the Gallery. The book is a fascinating, often amusing, tale of the Society's formation, its somewhat elitist outlook in its beginnings, through the more 'democratic' times when Harry M. Miller became President and its progress and growth to a membership of over 30,000 today. The book has been entered into the Museums Australia Multimedia and Publication Design Awards for 2014.

#### *Sydney Moderns: art for a new world*

Another element of the 60<sup>th</sup> celebrations was the Society's sponsorship of the exhibition *Sydney Moderns*. Presenting Sydney artists taking up the mantle of modernism, producing modernist work with a particularly Australian slant, the exhibition was a success with the critics and public alike. A

highlight of the exhibition was the reproduction of Hera Roberts' furniture designs for the historic Burdekin House exhibition of 1929. The superbly crafted furniture created by the Gallery's carpenter, Luke James, was offered to members at the end of the exhibition through an on-line auction, raising \$10,000 for the Society.

Along with the exhibition sponsorship, the Society also funded the conservation of Roy De Maistre's wallpaper panels, originally acquired by the Society for the Gallery in 1990 - providing \$25,000 for the project. The panels were given much-needed restoration and subsequently hung on the walls of the members lounge.

### *Tram Kaleidoscope*

As its 60<sup>th</sup> anniversary acquisition the Society acquired for the Gallery artist Frank Hinder's extraordinary painting *Tram Kaleidoscope* 1948. The timing of the auction from which the painting was acquired was such that the work was able to be included in the *Sydney Moderns* exhibition, where it was given prominence on a wall of its own.

### **60<sup>th</sup> Anniversary Gala Dinner and Fundraising Auction**

On 27 July, the Society held a Gala Dinner and Fundraising Auction, the high point of the 60<sup>th</sup> celebrations. Attending the dinner was the Society's Patron, Her Excellency, the Governor of NSW, Professor Marie Bashir, the director Dr. Michael Brand and his wife Tina, members of the Gallery executive, Society Councillors and Society members.

On the evening, the Governor launched Judith White's book *Art Lovers: the story of the Art Gallery Society of NSW 1953-2013*, and talented young pianist Alexey Yemtsov gave a marvellous recital to a hugely appreciative audience.

The evening was hosted by writer, actor and comedian Jonathan Biggins and the auction conducted by long-time Society supporter Andrew Shapiro from Shapiro Auctioneers. Artworks were generously donated by Ann Thomson, Alex Seton, Sokquon Tran, Linda Bowden, Jenny Sages, Jennifer Keeler Milne, Ian Grant, Pat Corrigan, Art Equity, Mark and Sandra Johnson and with a number of silent auction items combined raised \$76,000 for the Society.

### **Councillors' Lunch**

On December 5, a lunch was held in the Gallery for former and current Councillors to acknowledge their contribution to the Society's success over many years. Hosted by current President John Masters the lunch was attended by 30 past and present Councillors.

## Acquisitions

Along with the acquisition of Frank Hinder's *Tram Kaleidoscope* mentioned above, the Society also acquired three other works for the permanent collections.

To commemorate the appointment of Dr. Michael Brand as director, the Society made funds available for him to acquire a work of his choosing to celebrate the occasion. After some searching, Dr. Brand chose major American Pop artist Ed Ruscha's *Gospel* 1972. The artist and his wife made the acquisition possible by making a matching contribution. The work is considered the finest example of Ruscha's painting in the collection of an Australian institution and is from the high point of his creative career, the 1970's.

The Society was pleased to provide this opportunity to Dr. Brand, as it also did when Edmond Capon assumed the directorship in 1978, his acquisition being a Tang Dynasty porcelain horse.

The other two acquisitions were acquired by the Society's younger members group *Contempo*. Both were for the Gallery's photography department and comprised two suites of photographs by Fiona Pardington: *Portrait of a life cast of Matoua Tawai* 2010 and *Portrait of a life cast of Takatahara* 2010 and Sue Ford's *Joy* 1964, *Joy* 1974, *Annette* 1964, *Annette* 1974, *Ashe* 1964, *Ashe* 1974, *Emile* 1966, *Emile* 1974, and *Helen* 1962, *Helen* 1974.

Two other works bid for at auction, which would have filled the criteria of the Dagmar Halas bequest were unsuccessful. Curators from the Australian department are still on the lookout for an appropriate work for the bequest.

## Look Magazine

*Look* magazine is quoted as one of the most treasured benefits of belonging to the Art Gallery Society. As the chief means of communication with our members, we were thrilled in our 60<sup>th</sup> anniversary year to be able to present members with an alternative way in which to receive the magazine.

In July, the Society introduced a digital format of *Look* downloadable onto an iPad from the Apple store. While inevitably the initial take-up was small, though slowly increasing as the months pass, iPad *Look* readers have the benefit of extra content and imagery not possible in the paper version.

*Look* for iPad is the first state gallery members' magazine to be offered in this format, and the Society is pleased to be able to offer members this extra level of service.

## Events

In 2013 the Society presented members with over 500 events, including lectures, talks, and workshops for adults and children, tours and parties.

The events program attracted 43,000 attendees throughout the year. The flow-on effects from members' engagement with the program benefit the Gallery through members' use of the kiosk in the lounge, the cafe, restaurant, shop and paying exhibitions.

### *Art Appreciation Course*

The Society continued its landmark art appreciation course in 2013 with *Revolution to Romanticism: European art and culture 1750 – 1850*.

The 33 lecture course sold out Thursday lunchtimes and attracted 140 bookings each Wednesday night. Total bookings for the course achieved 14,500 tickets.

### *Learning Curve Lecture Series*

The Society presented three of its Learning Curve Lecture Series throughout the year: *Favourite British Novels of the 20<sup>th</sup> Century*; *Fashion Matters: fashion, art and society*; and *The American Way of Art: Weaving the threads of history and culture*.

Learning Curve lectures offer members a broader range of subject matter that ranges across all the humanities to provide a richer introduction to all the arts.

*The American Way of Art* series presented 16 lectures on the history and social, artistic and political aspects of America ahead of the Gallery's exhibition *America: Painting a Nation*, providing members with a well-rounded knowledge of American culture to enhance their viewing experience.

The Society aims to provide a range of events for members that suits every pocket and caters to all interests, from practical art-making workshops to classical music concerts that helps to make the Gallery one of this city's most vibrant arts institutions.

## **Contempo**

*Contempo* is the Society's younger members program that keeps its finger on the pulse of what is happening on the contemporary scene, with a diverse range of events that cover design, architecture, street art, technology and the arts, fashion and much more. *Contempo* also engages young people with the AGNSW and its exhibitions, providing a stimulating experience now that will keep them coming back in their later years.

*Contempo* has a dedicated committee of 16 volunteers who give their time and energy to create a dynamic program of events along with another 50 volunteers who give their time to help manage and work on the events.

Each year, *Contempo* provides funds to acquire works for the Gallery's contemporary collections. The 2013 acquisition is detailed on page 3.

## **Corporate Membership**

The Society has a loyal core group of companies who belong to the Corporate Membership program. Corporate membership provides a client entertainment and networking opportunity on 12 evenings during the year allowing member companies to showcase their support for the Gallery and the arts to their corporate colleagues.

The competition to attract corporate support is immense and the Society is grateful to the 150 companies who continued their commitment over the past year.

## **Corporate Sponsorship**

The Society is extremely fortunate to have the generous support of the following organisations that provide financial sponsorship to many areas of the Society's operations.

Arab Bank Australia  
Art Equity Pty Ltd  
Artology  
Faber-Castell Australia Pty LTd  
K.W.Doggett Fine Paper  
Lindsay Yates Group  
QANTAS Airways Limited  
RESIMAC Limited  
State Street Corporation  
Taylors Wines  
Taylors Wines Family

In our 60<sup>th</sup> anniversary year we thank them all for helping us to provide members with a truly unique membership organisation.

## **Volunteer Guides, Volunteer Task Force, Contempo Volunteers and Community Ambassadors**

All museums rely on the goodwill and generosity of spirit that its volunteers provide. The amount of resources saved and put to other uses that volunteers allow is of inestimable value to all institutions and the Art Gallery of NSW is no different.

The AGNSW is privileged to have four main volunteer groups: the Volunteer Guides, Volunteer Task Force, *Contempo* volunteers and the Community Ambassadors.

These groups provide guided tours of the permanent collections and temporary exhibitions for Society members and the general public, hands-on practical assistance for the Gallery and the

Society and for *Contempo* events. The Task Force also contributed to Sculpture by the Sea with a \$4,000 artist subsidy.

In 2013 the Community Ambassadors, who provide guided tours in the Korean, Chinese and Japanese languages celebrated their 10<sup>th</sup> anniversary. These much needed ambassadors promote the Gallery and the Society to their communities and overseas visitors, an essential connection to Sydney's multicultural melting pot.

## Looking Ahead

In March 2013, the director Dr. Michael Brand unveiled his vision for an expansion of the Gallery entitled *Sydney Modern*.

*Sydney Modern* is a bold vision that will see a new addition to the Gallery, an iconic building that will enable the AGNSW to show more of its permanent collections, provide better facilities for the staff, public and members alike, and space for more temporary exhibitions and the showcasing of the best in contemporary art.

*Sydney Modern* will also enrich Sydney's wonderful cultural precinct that surrounds Hyde Park, the Domain and Circular Quay whose pinnacle is, of course, the magnificent Sydney Opera House.

Members play an important ambassadorial role in helping create the *Sydney Modern* vision.

Your continued support of the much-loved AGNSW and your advocacy in the wider world for *Sydney Modern* will send a solid message that the arts have a vital role to play not only in our lives but in the life of this great city.

Art Gallery Society members have demonstrated six decades of support for the AGNSW, support acknowledged in our 60<sup>th</sup> anniversary year.

And, of course, *Sydney Modern*, with its history making expansion of our current Gallery will enable the Society to expand its horizons and offer more to members, an opportunity to give something back to you for your loyalty and support for this important artistic institution over the past decades and for the years to come.



Craig Brush  
Executive Director



John Masters  
President



---

**PATRON**

Her Excellency Professor Marie Bashir AC  
Governor of New South Wales

**HONORARY LIFE GOVERNORS**

The Hon Bronwyn Bishop  
Mrs Joan Levy  
Mr Peter Flick  
Mrs Diana Walder OAM  
Mr Raymond Kidd  
Mrs Carolyn Ward

---

**ELECTED COUNCILLORS 2013****President**

John Masters

**Vice President**

Les Moseley

**Treasurer**

Christopher Wokes

**Elected Councillors**

Anne Blomfield retired at AGM 27 March  
Sue Dadswell  
Jacqueline De Diana  
Fred Orr  
Valerie Marteau  
David Levine AM Resigned from Council 23 August  
Aviva Ziegler

**Ex-Officio**

Dr Michael Brand

**IMMEDIATE PAST COUNCILLORS**

Phoebe Alexander  
Jenny Birt  
Charles Latimer  
Phoebe Alexander

**HONORARY LAWYERS**

Allens Linklaters  
Gavin Smith

---

**STAFF January – December 2013****Executive director**

Craig Brush

**Executive assistant**

Batsheva Abrahams

**Finance manager**

John Kamleitner

**Assistant finance manager**

Roanne Papas

**Finance assistant**

Maria Sapuppo

**Look editor**

Jill Sykes AM

**Publication coordinator**

Emma Glyde

**Membership and database manager**

Richard Baesjou

**Software engineer**

Edson Carvalho

**Membership services manager**

Fiona McIntosh

**Membership coordinator**

Elle Radin

**Membership assistants**

Millicent Latham

Emma Went

**Contempo and events coordinator**

Amy Prcevich

**Corporate development director**

Mark Manton

**Corporate relations coordinator**

Melinda Holcombe

**Events manager**

Michelle Munro

**Ticketing manager**

Jamie Mackenzie

**Events coordinator**

Hans Schmidt

Natasha Mikitas

**Educational programs coordinator**

Dot Kolentsis

**Marketing manager**

Natalie Matar

Skye Rollo

**Marketing coordinator**

Philip Parker

**Reception**

Phil Williams

Madeline Price

**Travel Consultant**

Liz Gibson

**Additional Support****PHOTOGRAPHERS**

Jenni Carter

Felicity Jenkins

Diana Panuccio

**RIGHTS AND REPRODUCTION**

Michelle Andringa

---

**COLLECTION CIRCLE AND ACKNOWLEDGED DONORS January – December 2013**

B Abel	S Beresford	S & M Carey
A Adair	L Bergin	D Carment
S Adams	R & J Beslich	E Carroll
J Adler	D Beumont	J Casey
E Adler	J Birt	F Cassen
E Aitken	R Bischoff	B Cassen
G Alexander	C Bishop	J Casteleyn
L Alexopoulos & H Tamvakeras	T Bisley	P & D Cavazzini
A Allan-Duck	J & R Blewitt	H & R Chadwick
A & W Allaway	W Blinco & A Jameson	G & G Champion
R Allen & P Witt	A Blomfield	W Chapman
C Allen	P Bondin & A Singer	B Chapman
R & M Allen	P Booth	A Chapman
J Allen	D & P Boyle	L & J Chapman
C Allison	M Bradbery	T Charleston
J Allsop	F Breen & C Hunter	S Charlton
J Altman	D & H Brett	J Cheng
R Amm	S Brettle	D Cheong
C Ancher & M Lobb	J & M Brewer	S Chin
B Anderson	J Briggs	F & M Choate
R Anderson	E Britton	O Choong
L & L Anderson	M & A Britts	J Choulkes
J Angelis	P & R Brocklesby	R & S Christmas
M Antico	V Brooke	L & P Chronican
J & J Armitage	C Brookes	R Clark
P & K Armstrong	D Brookes	K Clark
M Arndt	M Brookes	J Clark & T Tunkunas
J Arnold	A Brown	G Clarke
T & M Ash	J Brown	D Clarke & S Lee
M Ashmore	A Browne	R Claxton & N Watson
K Ashpole & L Pierce	J Bryant	D Clive-Thomas
M Atkinson	J Bryant	B & S Cohen
G Bachell & C Ewe	L Buckle	S & T Cole
E & H Bachmann	J & C Buckley	R Coleman
R Bagot	E & W Bucknell	E Collerton
M Ball	J Buhagiar	D & L Collingridge
B & M Ballantyne	G & C Bull	K Comerford
J Barnard	A Bune & J Chalmers	J & A Compton
T Barnett	A Burge	R Compton Jones
L Barnett	D Burke	A Concannon & C Pang
B Barripp	H & M Burns	J & A Connor
R & M Barry	N & S Burns	L Cook & T Turner
J Bateson	M & A Burns	C & F Cook
G Batty	N & J Burrows	J & M Coolican
L Baur & R Best	C Busby	R Cooper
V & A Bear	B & F Butcher	A & E Corbett
R Beckley	A & M Caillard	J & L Corbett
H & M Belcher	H & H Cairns	P Cornwell
D & J Bell	B Calf	P & B Corrigan
T Bennett	N & M Cameron	E Cossman
K & A Bennett	O Campbell	R & R Cottle
H Bentham & D Uicich	C & S Candlin	L Coupe

L Cox  
D Cox & R Lovatt  
M Craig  
P Craswell  
T Crause  
D & B Crawford  
M Crawley  
N & J Crew  
C & P Crittenden  
M & S Crivelli  
B Croft & G Zemaitis  
L Crookes  
E Cropley  
P Cudlipp  
J Cuningham  
M Cunningham & G Doherty  
P Curtis & P Weitzel  
D & I Daly  
A & N Daniels  
J Darling & S Blair  
I Darnton-Hill  
C Davies  
L Davis  
P & J Davis  
C & D Davison  
A Dawson & A Ingram  
C & S Dawson  
R & N Day  
J & D De Diana  
A de Paor  
A De Salis  
E & R Dearing  
C Deer  
B & L Delprado  
M Dempsey  
J Dewar  
G Dickerson & M McIntosh  
S Dietrich & N Shelley  
G Docking  
I Dodd  
P Doherty  
J Donsworth  
K Doree  
L Downing  
D & D Draper  
G & M Drevikovsky  
S & P Dudgeon  
L & P Duerden  
J Duncan  
B Dundas  
O Dunk  
I & M Dunlop  
E Dunn  
H Durbin  
J Dwyer  
K Eccles  
B Edwards  
A Egan

P Eichhorn  
M Einfeld  
P Eklund  
M & R Elliott  
M Ellsmore & C Lane  
M & D Emerson  
L Engdahl  
K Erman  
P & R Espie  
R & P Evans  
E Evatt  
R & J Eve  
T Ewens  
H Fairfax  
Y Fan  
R Farrar & S Forbes  
A & Y Farrow  
B Fasher  
M Ferguson & I Walker  
M Ferguson  
R Field & P McDuffee  
R Finn  
H Fisher  
J & J Fisher  
M & D FitzSimons  
M & G Flavel  
H Fleming  
H Flood & E DiQual-Flood  
A Flood  
A Florin  
B Floyd  
P & C Flynn  
G Ford  
J Ford  
M Ford & J Buchanan  
S Forsstrom  
D & M Foster  
C & N Francis  
K Fraser  
M & C Fraser  
L Freeman & R Levine  
E Freeman  
A Galbraith  
J Garcia  
J & A Gardener  
M & B Gardiner-Hill  
J Garske & Y Mounier  
F Geddes  
G Gilbert & T Sorrell  
E Gilkes & S Kulmar  
J Gillespie & I Garland  
S Gilmore & M Devine  
L & M Giutronich  
S Glasgow  
R & R Goninan  
C & J Goodwin  
H Gordon  
L Gough

R & M Goyal  
C Grace  
G Grant  
N Gray  
F Grear  
M & C Green  
W & D Green  
R & A Green  
J & J Green  
D & M Green  
S Greenaway & W Benson  
G Greethead  
J Gregory-Roberts  
J & B Greive  
K & S Gresham  
P Griffin  
D Griffin  
C & W Griffiths  
J Grossbard  
W & R Gubler  
P Guest  
S Guest  
C Gunn & S Smith  
B Guthrie & M Kingshott  
C Guy  
M Hadfield  
A Hagiwara  
A Hall & S Werner  
B & J Hall  
J & M Hamberger  
G & E Hamilton  
E & G Hammond  
S Hancock  
K & D Handley  
J Hannoush & T Hamilton  
K Hansen  
L Hansen  
S & C Hansen  
B Hardaker  
A & J Hardy  
R Hargraves  
J & P Harper  
F Harridge  
D & V Harrington  
P Harris  
A Harris  
J & R Harris  
L & R Harris  
D Harvey  
W Harvey  
M Haslum  
S & A Hasnip  
S Hatherly & L Storlien  
J & M Hawker  
D & C Hayes  
M Hayes & B Zhang  
M Haylen  
E Healey

C Hearne  
D & P Heath  
L & H Heiligers  
F Hellier  
M & P Hely  
J Henry  
P & K Herborn  
J Herring  
A Hertzberg & S Sproule  
L Heyko-Porebski  
L Higgs  
D Higgs  
D Higson  
L Hill  
S & N Hines  
B & J Hirst  
A Hocking & B Williams  
R & B Hollings  
C & A Hollo  
J Holt  
M Holt  
B & G Hood  
H & H Hootman  
T & M Horton  
I & D Horvat  
G Hosken  
C & P Hoult  
P Howard  
A Howard & R Newell  
S & C Howard  
L Howarth  
P & M Howe  
S & P Howes  
M Hudson & J De Mole  
M & D Hunt  
P & R Hunter  
M Hunter  
S Ianitto  
J & M Ikenberg  
D & N Illingworth  
A Isles  
E Jackson  
P & S Jacobson  
S James & J Jensen  
J & C Jarvis  
C Jasek  
J & J Jefferis  
D & H Jenkins  
D & P Jeremy  
D Johnson & M Robotin  
R & H Johnson  
D Johnston  
R Johnstone & B Hanley  
B Jones  
C & R Jones  
L Judd  
J Kalek  
S & R Kamath

A Karpin  
P & M Keane  
A & R Kell  
C Kelly  
S Kelly  
H Kelman  
G & M Kemp  
A & P Kennedy  
P & P Kenny  
A Kent  
R Kerr  
O Khurana  
C Kibble  
G & M Kimpton  
B & J Kinchington  
R & R King  
P King  
L Kings-Lynn & H Johnson  
S Kirkwood  
R & M Kleeman  
J Kloster  
J Kneeshaw  
M Knep  
V Knowles  
S Kocsis  
J Koffel  
J Korner  
L Kornmehl & J Hilton  
G Kotzas  
S Krishna Reddy  
C & S Lahz  
H Laidlaw  
J & J Lance  
E Landa  
M Lane  
D & E Lane  
B & B Lange  
E Langley  
I Lansdown  
L Lash  
S Lawrie  
S Le Tourneau  
C Leach  
D Leaver  
M Lederman  
J Lee  
D & J Lee  
S Leich  
B Lennon  
D & A Levine  
G Levy & J Hockey  
N Liapis  
C & S Lillienthal  
J & J Litchfield  
L & I Littlemore  
J Littman  
S Llewellyn-Jones  
C Lloyd

E Lobb  
J Lockhart  
D & P Long  
M & M Lopez  
J Lotzof  
K & S Loudon  
R Low  
P Lowbridge  
C & P Lowry  
R Luger  
S Lukovic & J Srdanov  
F & B Lumley  
T Lynam  
H Maas & M Manning  
B MacIntyre  
M Mackisack  
C & N Maddock  
D & N Magill  
D Mallick  
L Mallon  
M Malota & M Davis  
I Manion  
J Marks  
V Marquis  
R Marsh & S Branch  
A & T Marshall  
V Marteau  
J Martin  
M & R Martin-Weber  
S Marwood  
Z Mashen & P Myint  
B Mason  
S Mason  
P Massie Greene  
J & T Masters  
J & H Maston  
L & B Mathew  
J Mathews  
s matthews  
R & L Max  
G McBain  
A McCallum  
H McCathie  
L McDermott  
C & R McDiven  
R McDougall  
A McFarlane  
J & C McGregor  
A & D McGregor  
I & D McIntosh  
J McKay  
E McLachlan & I McGrath  
G McLellan  
E & G Mendelsohn  
R & F Michell  
J & L Mihalyka  
M Miland  
H & B Miller

G Millin	A Owens	B & L Roberts
C Mills & N Pelham	M Owyong	B Robertson
K Mills & S Breen	B Padgett	J Robertson
S Milroy	C Pamentor	V Robison
P & S Mitchelhill	M & M Papas	R Rodgers
P Mitchell	A Pardoe	P Rogers
J Mitchell & E Kim	J & D Parker	J Rome
Y Mizukoshi	J Parkinson & R Fernandez	T & P Rose
W & R Moloney	G Partridge	A & H Rose
M Morel & Mist	D & C Passlow	A Rose
G Morgan	M & H Paul	K Ross
G Morgan	D Peacocke	D Rossell
H & P Morgan	W Peddell	A & E Roth
J & I Morrison	J Pennefather	B Roughley
N Morrissey	D Perik	H & L Rouse
L & N Mortensen	J & G Persse	C Rousel
G Morton	S & N Peters	M & A Rowlands
L & L Moseley	A Pethebridge	S Rowley-Bates
A & J Moss	T Phillips	A & J Rozen
R & A Mountstephens	M & C Phillips	B & G Russell
P Muller	A Phillips	S Ryan
O Munoz	B & W Pike	G Rygate
P & J Munro	J & J Playfair	J Salisbury
J Murphy	C & J Pollitt	M Sankey
K Murray	L Poole-Warren & P Spencer	B Sarvay
S & B Murray	S & M Poucher	P Sayle
C Murtagh	L Pratt & K Lindeson	G Scarf & M Blaxill
L Musgrove	M Pribula & K Fluker	M & R Schneider
L Nawran	G Pritchard	P & H Schuttler
M Nayton	J Radosavljevic	N & S Schweizer
I Nebenzahl	A Raffel	N Scott
D & C Nelson	M Ranallo	M & I Scott
R & L Neumann	R & A Ranger	G Scott-Mitchell
J Neustein	D & J Rawson	M Seale & D Hardy
P & J Newman	P Rayner	A Searle
S Ng	S Reeckmann & G Holmes	M Segaert & K Onslow
G Nguyen & G Archer	C Reed	M Shaw
F & J Nicholas	B Reed	J Sheahan & S Gregory
G Nicholls & N Barlow	J & J Reed	S Shwabsky
J & S Nield	K Refshauge	J Siegel & D Eades
M Nikolakopoulos	M Regan	E & J Siegel
J Nisbet	T & J Reid	J Silverton
K Noble	P Renneberg	K Simmons
J Noel	S & P Rexstraw	B Simons
P Norsa	G Rhyder	J Simpson
G North	T Rice	R Simpson
P Novikoff	P Richardson	J Skinner
M & P Nygh	K Richardson	E & N Slarke
G & J O'Brien	P Richardson	S Slessar
E O'Connor	K Richmond	I & J Sloan
B & J O'Keefe	N & M Rickard	N Smalley
J Olsen	S Rigby	J Smith
G & L Olsen	F Riggs	A & A Smith
K Ooi	R Riley	E & D Smith
F Orr	A & B Riley	T & L Smith
R & J Osborn	V Roadley	I & J Smith
E Ostor	F Roberts & J Astolfi	J Smyth-Davey & P Smyth
M O'Sullivan	K Roberts	E Snodgrass

V Sonogo	B Thompson	M Weir
C South	P Thomson	A Westman
M & M Sowell	F & P Thornhill	A Whealy
B Spencer & C O'Neill	D Thurlow	R Wheeler
C Spencer	E & B Tipton	H White
K Spiegel-Keighley	E Tomlinson	S White & L St George
B Spode	A Toohey & E Howard Spicer	T Whyte
W Spratt	T & V Trahair	I & J Wiadrowski
S Sproats	J Traurig	M & P Wikramanayake
D St Clair	A & R Travis	K Wilhelm & P Taylor
J Stafford & J Nicholson	D Triggs	C Wilkinson
N & M Standish	E Tripp	S Wilkinson
R Steele	J Trowell & C Clark	A Williams
M Steele	D Truss	R & J Williams
N Stegemann & S Hussey	K Tuba	D & G Williamson
M Steilberg	D & A Tunny	J Willimott
A & A Stephenson	P Twigg	G Willis
R Stevens	A Utting	E Willstead & C Duggan
S Stevens	P & J Van De Velde	C Wilson & J Chang
C Stewart	P van Nierop	A Wilson & K Byatt
J Stewart	& D Vaughan	A Wilson-Ehrlich
D Stewart-Hunter & S Fox	P Vejarano	B Witcombe
O Stojkovic	J Veness	T & E Wolfe
R Stone & A Kesson	N Venet	C & W Wong
D Storch	D & L Volker	G Wood
T & R Strong	K & T Vu	C Wood
J & J Strutt	P Wackwitz	C Woodley
E Stuart & J Piggins	T & G Wales	N Woollard
L Suggett	J Wales	H Wootten & G Cowlshaw
P Summers	R Walker	J Wran
A & V Sutherland	J & G Ward	Y Wright
J Sweaney	N & A Warwick	B Writer
E Symonds	R Watkins & G Helmstetter	E & A Wrobel
J Symons	R Watkinson	J & C Wyatt
A & G Tagg	A Watson	G & K Yap
E & E Tang	C Watson	M Young
P & B Taylor	J & J Watson	J Young
M & D Taylor	J Watts	W Yu
L Tebb	E Waugh	R & R Yuen
C & T Tey	C Webb	D Zador & G Saberton
P Thomas & J White	P Webb	S Zampatti
A Thomas	J Webster & A Bowen	

---

## SPONSORS

Arab Bank Australia	QANTAS Airways Limited
Art Equity Pty Ltd	RESIMAC Limited
Artology	State Street Corporation
Faber-Castell Australia Pty Ltd	Taylors Wines
K.W.Doggett Fine Paper	Taylors Wines Family
Lindsay Yates Group	

---

## CORPORATE MEMBERS January – December 2013

10 group	Citi
Agfarm	John Claudianos
Ahtram Pty Ltd	Clifford Chance
Allen Jack + Cottier	Cliftons
Allens	Colliers International
Alstom Limited	Commonwealth Bank - IB&M
Ambition	Computershare
American Express	Copyright Agency Limited
American Express Public Affairs	Credit Suisse
AMP Capital	Crisp Legal
Aon Hewitt	Cryptych Pty Ltd
Arredorama	Curwoods Lawyers
Artis Group Pty Limited	Cuscal Ltd
Ashurst	Rasika Dayananda
ASX	Deloitte
Aurecon	Diamond Conway Lawyers
AWE Limited	Diana Eddy & Associates
Bain & Company	DibbsBarker
Baker & McKenzie	Directioneering Pty Ltd
Bartier Perry Solicitors	Egencia
BDO	Emirates SkyCargo
BlackRock	Energy Industries Superannuation Scheme Pty Limited
Bloomberg	Faculty of Architecture, Design & Planning
Bluestar Print	Fairfax Media Limited
BNP Paribas Securities Services	FDC Construction & Fitout Pty Ltd
Bridges Financial Services Pty Ltd	Fox Symes & Associates
BTA Vantage Pty Limited	Gadens Lawyers
Calder Flower Architects Pty Ltd	Eric & Tonia Gale
Carroll & O'Dea Lawyers	Goldrick Farrell Mullan Solicitors
Cartier Group Pty Ltd	H Stevens Pty Ltd
CBRE	Harmers Workplace Lawyers
CCH Australia	Herron Todd White



Hicksons  
Holding Redlich  
Holman Webb Lawyers  
Hostplus  
HWL Ebsworth Lawyers  
IBM Australia  
IMB Ltd  
IncNet  
Insight CFS  
Integrated Research Ltd  
International Masters Publishers Pty Ltd  
iSentia  
Jackson Teece Architecture  
Stuart Jacquet  
Jirsch Sutherland  
Job Futures  
John Claudianos  
Johnson Pilton Walker Pty Ltd  
Knoxweb Investments Pty Ltd  
Lend Lease Building Pty Limited  
Levi Consulting Pty Ltd  
LexisNexis  
Liberty International Underwriters  
Lindt & Sprüngli  
Macquarie Telecom  
Martin & Savage Pty Ltd  
Maurice Blackburn  
McCabes Lawyers Pty Ltd  
McGrathNicol  
McKinsey & Company  
Memocorp Australia Pty Ltd  
MetLife  
MLC  
Mortgage Choice Ltd  
Mosman Art Gallery & Cultural Centre  
Multi-Pak Industries Pty Ltd  
Mundipharma Pty Ltd  
Nettleton Tribe  
News Corp Australia  
Norman Disney & Young  
North Shore Private Hospital  
Norton Rose Fulbright Australia  
NTT Communications ICT Solutions (Aust) Pty Ltd  
NYK Group Oceania  
Ord Minnett Limited  
Pimas Gale Construction P/L  
PM Partners Group  
QBE Insurance Group Ltd  
QBE Lenders' Mortgage Insurance  
Renaissance Tours  
ResMed Ltd  
Rodgers Reidy  
RSM Bird Cameron  
RSM Bird Cameron Partners  
Rubik Financial  
Savills Australia  
Shapiro Auctioneers  
Sherborne Consulting  
Sky News Business Channel  
SMS Management & Technology  
Snap Printing North Sydney  
Sparke Helmore Lawyers  
Steensen Varming  
Stephenson Mansell Group  
Taylor Thomson Whitting  
Theme & Variations Piano Services  
Thomsons Lawyers  
Toshiba (Australia) Pty Ltd  
Trippas White Group  
URSA Clemenger  
Veolia Environmental Services (Australia) Pty Ltd  
Walker Wayland NSW  
Warren Smith & Partners Pty Ltd  
Wehbys  
Wentworth Galleries  
Wesfarmers Industrial & Safety  
Westpac Banking Corporation  
Wood & Grieve Engineers  
Woven Image  
WT Partnership  
Wunderman

---

## **CONTEMPO COMMITTEE**

### **PRESIDENT**

Renee Siros

### **SENIOR VICE PRESIDENT**

Andrea Brown

### **VICE PRESIDENT**

Alicia Parlby

### **SECRETARY/ TREASURER**

Leona Ng

### **VOLUNTEER COORDINATOR**

Rebecca Williams

Sarah Close

Candice Gilmore

Miriam Green

Alison McDonald

Hayden McLean

Nicole Monks

Gaston Nguyen

Jordan Reed

Freya Zinovieff

In November the Contempo Committee held a celebration of life for volunteer Lynn Oxford who passed away unexpectedly. It was attended by Lynn's family and friends as well as the committee, and was greatly appreciated by her family.

---

## **CONTEMPO VOLUNTEERS January – December 2013**

Amelia Davis

Andres Basso

Ashlee Ralla

Bernadette Camenzuli

Bernard Dabrowski

Bronwyn Dowling

Bronwyn Kaspura

Christina Busby

Claire Lawley

Gavin Azar

Hannah Van Der Velden

Harry Whelan

Iolanda Capodanno

Jane Cole-Pochon

Longy Han

Lynne Lancaster

Marianna Tuccia

Michelle Cottrell

Neta Mariakis

Nicole Khedoori

Paula Arnall

Peter George

Sayako Inoue

Siobhan Cowell

Skadi Heckmüller

Yonas Bauer

---

**COMMUNITY AMBASSADORS January – December 2013**

Kyumi Ahn  
Kyung-hwa Ahn  
Kazuko Chalker  
Liwana Chan  
Peter Chan  
Simon Chan  
Jean Yueh-chen Chen  
Wen-Li Chen  
Seong Cho  
Aiko Hagiwara  
Daisy Hsu  
Vivian Huang  
Hiromi Kamokasu  
Elizabeth Kao  
Betty Kim  
Mijurng Kim  
Joanna King  
Pearl Knight  
Hisae Kobayashi  
Sonia Kuo  
Naoko Matsumoto Lambert  
Linna Le Boursicot  
Hoim Lee  
Hyun Ju Lee  
Jean Lee  
Minnie Xiao Min Liang  
Su Jen Lin  
Jennifer Mok  
Kaoru Morioka Murray  
Franklin M.Y. Nieh  
Kana Nishimuta  
Angeline Oyang  
Keiko Parsonson  
Erica Poon  
Julia Tang  
Irene Tseng  
Helen Changken Wong  
Janet Wu  
Min Hong Xiao  
Qianwen, Sharon Xie  
Nahomi Yoshizawa

---

---

## VOLUNTEER GUIDES COMMITTEE

### COORDINATOR

Rosalie Blackshaw

### LECTURE COORDINATOR

Caroline Presland

### PAST COORDINATOR

Carolyn Bethwaite

### ASSISTANT LECTURE COORDINATOR

Jenny Reed

### ASSISTANT COORDINATORS

Shirley Lilienthal

Carolyn Bethwaite

### SECRETARY/TREASURER

Dilys Renham

### CHILDREN'S COORDINATOR

Bella Church

### ASSISTANT CHILDREN'S COORDINATOR

Jo-Ann Smith

---

## VOLUNTEER GUIDES January – December 2013

Victoria	Alexander	Sally	Cullen	Catherine	Hickson
Dale	Amir	Margaret	Cunningham	Helen	Holmes
Carolyn	Andrew	Helena	Daley	Pia	Hughes
Jan	Angus	Lorraine	Davids	Marie	Huxtable
Margaret	Anthony	Anabel	Dean	John	Hyde
Yvonne	Antonopoulos	Jackie	De Diana	Chrissie	Jenkins
Robin	Archer	Mary	De Mestre	Margot	Johnston
Wendy	Atmore	Allan	Digby	Diane	Kempson
Phillippa	Baird	Anna	Duggan	Jill	Kloster
Lindy	Batchelor	Patricia	Elliott	Kay	Knight
Robyn	Bathurst	Lorraine	Ennis	Pearl	Knight
Annabel	Baxter	Diane	Everett	Ira	Kowalski
Sue	Bearman	Louise	Fennel	Pat	Kreuter
Carolyn	Bethwaite	Robyn	Flick	Dorothea	Labone
Dale	Bird	Pam	Fuller	Shirley	Lilienthal
Pamela	Blackett	Caroline	Furniss	Adele	Lingard
Jenny	Birt	Jennifer	Gardiner	Susan	Ma
Rosalie	Blackshaw	Mary Lou	Gilbert	Catherine	Mairs
Jan	Bressan	Anne	Gray	Susan	Marjoram
Mary-Jane	Brodribb	Deirdre	Greatorex	Sandra	Marsh
Vicki	Brown	Alison	Gross	Joan	Massey
Cathy	Cameron	Alisa	Halkyard	Jann	Mcclintock
Lisa	Campbell	Jennifer	Harrison	Judy	Mccomas
Bella	Church	Eve	Harrison	Ashley	Mcdonald
Catherine	Clelland	Cynthia	Haskel	Frances	Mcnally
Julie	Collins	Juliet	Hawthorne	Cherry	Mcwilliam
Liz	Crenigan	Annie	Herron	Carolyn	Memmott

Susan	Mitchell	Choon	Quek	Caroline	Storch
Gwyneth	Morgan	Judi	Redelman	Dorinda	Sullivan
Les	Moseley	Jenny	Reed	Ann	itherland
Christine	Moult	Kate	Reede	Jacqueline	Sutton
Catherine	Muir	Dilys	Renham	Jennifer	Sutton
Maureen	Murphy	Jan	Reeves	Susan	Swan
Diana	Northedge	Peter	Richardson	Mark	Taylor
Edwina	O'donnell	Kica	Saar	Prue	Todd
Dianne	Ottley	Louise	Samer	Sam	Tonkin
Angeline	Oyang	Pauline	Sayle	Lee	Tredinnick
Mandy	Palmer	Lilli	Scott	Jan	Tydd
Wendy	Payne	Beverley	Shea	Susan	Urwin
Philippa	Penman	Jo-Ann	Smith	Cilla	Warre
Erica	Poon	Beatrice	Sochan	Anne	Woodham
Penny	Porter	Amanda	Solomon	Patricia	Wilson
Keith	Potten	Denyse	Spice	Brenda	Woods
Irene	Potts	Libby	Stanton Cook	Sally	Young
Caroline	Presland	Fiona	Still	Linda	Zurnamer

---

---

## VOLUNTEER TASK FORCE COMMITTEE

### COORDINATOR

Sue Dadswell

### ASSISTANT COORDINATOR

Judy Embrey

### SECRETARY/TREASURER

Julie Apps

### REGISTRAR

Jeffrey Waiyee

### EXHIBITIONS ROSTER OFFICER

Judy Tribe

### MEMBERS LOUNGE ROSTER OFFICER

Lea Clarke

### MEMBERSHIP DESK ROSTER OFFICER

Merrilyn Sowell

### NEW MEMBERS OFFICER

Mary Grice

### FUNCTIONS ROSTER OFFICER

Sandra Beesley

### EXHIBITIONS AND MEMBERSHIP ROSTER OFFICERS' ASSISTANT

Ruth Attwood

---

## VOLUNTEER TASK FORCE January – December 2013

Dianne Adams	Diana Burton	John Doherty
Robin Amm AM	Susan Bye	Lindsay Donnan
Jan Anderson	Jennifer Carey	June Donsworth
Julie Apps	Nelli Carrel	Jutta Dubiel
Greta Archbold	Annette Carlisle	Catherine Duggan
Mara Ashmore	Mary Casey	Anna Duschletta
Ruth Attwood	Susan Charlton	Gordon Elliott
Meredith Aveling	Stephanie Chinneck	Judy Embrey
Pamela Azar	Annie S. Clarke	Sharon Eskell
Margot Bain	Lea Clarke	Ingrid Farago
Chris Baines	Rhonda Clasper	Eva Feher
Julia Baldo	Jenny Coolican	Yvonne Fell
Jennifer Barnes	Gabrielle Cousins	Coralie Fergus
Linda Barnes	Peter Craswell	Kitty Gassner
Kaye Barrett	Elizabeth Cummings	Yvette Geczy
Sandra Beesley	Patricia	Phillip Good
Diana Berlyn	Anne Curtis	Patricia Governor
Anne Blomfield	Susan Dadswell	Laura Gray
Georgie Blythe	Beverley Darby	Sheba Greenberg
Joyce Botta	Ann Dawson	Maria
W Spencer Bough OAM	Gail Dendle	Farnes Greene
Penny Bowen	Lynette Dening-Franklin	Mary Grice
Susan Boyd	Charlotte Denison	Beverley Griffiths
Valda R Brook	Francine De Valence	Georgina Gye
John Buchanan	Diane Devine	Janette Habel
Geraldine Bull	Ann Dodd	Aiko Hagiwara

Ben	Hall	Yvonne	Newhouse	Judith	Tribe
Simone	Hancock	Kate	Noble	Judith	Twist
Sue	Hancock	Helena	Novy	Mary	Unwin
Karen	Hannon	Brian	Nugent	Ursula	Ure
Carmella	Harding-Farrenberg	Sandy	Nugent	Lynda	Vaculik
Averil	Hargreaves	Ruth	Osen	Jeffery	Wai-Yee
Ine	Harrison-Latour	Kerry	O'Sullivan	Julie	Wallace
Daryl	Harrison	Susan	Pajor	Susan	Waller
Susan	Hartigan	Glenda	Paradine	June	Wangmann
Margaret	Haslum	Jenny	Parker	Norma	Warman
Frances	Hellier	Alexis	Potts	Marlene	Watson
Ann	Henderson	Jane	Pollard	Gail	Watt
Mary	Hillier	Judy	Preshaw	Jennifer	Watt
Madeline	Hunter	Greeba	Pritchard	Paul	Weingott
Teresa	Jakubowski	Cynthia	Pretty	Maggie	Weiley
Patricia	James	Judy	Proudfoot	Peter	Whawell
Felicita	Jennings	Marie	Puntigam	Joanne	Wilson
Krystyna	John	Catherine	Pye	Jennifer	Wood
Patricia G	Johnson	Margaret	Radford	Jill	Wunderlich
Margaret J	Johnston	Patricia	Reed	Sergio	Zampatti
Nita	Jones	Kate	Richmond		
Rhonnie	Joyce	Astrid	Robinson		
Donna	Kelly	Carol	Roth		
Sue	Kemp	Kim	Sandford		
Vere	Kenny	Maryanne	Sansom		
Sue	Kerr	Annette	Searle		
Jullette	Khoury	Rex	Secombe		
Helen	Kidman	Libby	Scanlan		
Ursula	Knight	Luisa	Scutts		
Triny	Lademann	Cassie	Sheehan		
Brenda	Lee	Judy	Sherman		
Laura	Lyubomirsky	Irene	Shillington		
Kristine J	Mackenzie	Dana	Skakavac		
Grace	Malanos	Ross	Smith		
Carolyn	Marsh	Victoria	Smyth		
Margaret	Marshall	Lesley	Sommerville		
Glen	McLellan	Merrilyn	Sowell		
Jan	McClelland	Judith	Stefanek		
Raymond	McDonald	May	Steilberg		
J	McDonald	Leslie	Stevenson		
Margaret	McLellan	Peter	Strand		
Marlene	McPherson	Ann	Sutherland		
Emma	Mendelsohn	Bonita	Swane		
John	Menzies	Marsha	Swenson		
Mary	Meppem	Anne	Taylor		
Sheila	Milroy	Irene	Thom		
Ray	Moss	Roxanne	Thompson		
Hilary	Moxon	Susan	Tompkins		
Colleen	Mulvey				

---

## ACQUISITIONS



### Fiona Pardington

Portrait of a life cast of Matoua Tawai (left profile), Aotearoa New Zealand 2010 (left)

Portrait of a life cast of Takatahara (right profile, painted), Aotearoa New Zealand 2010 (right)



### Sue Ford

diptychs from the Time series

gelatin silver photographs, c 6 x 4 cm each image





**Edward Ruscha**  
Gospel (1972)



**Frank Hinder**  
Tram Kaleidoscope (1948)



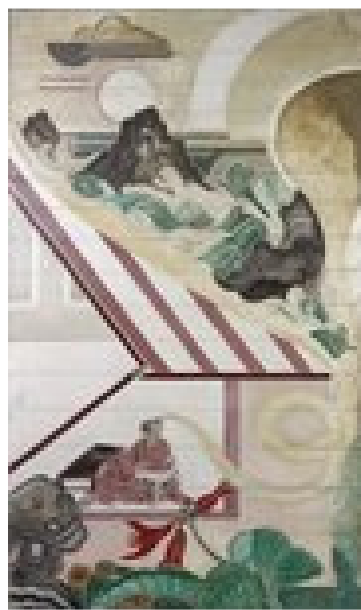
**Roy De Maistre**  
House and fisherman, woodland and deer, lake  
(early 1930's)



**Roy De Maistre**  
Magnolia and path (early 1930's)



**Roy De Maistre**  
Moon Gate Garden (early 1930's)



**Roy De Maistre**  
Court lady and seascape (early 1930's)

Roy De Maistre's wallpaper panels, whose conservation was sponsored by the Society, were subsequently hung on the walls of the members lounge.



ABN 26 000 207 198  
Art Gallery Road, The Domain,  
Sydney NSW 2000 Australia  
Telephone (61 2) 9225 1878  
Facsimile (61 2) 9225 1644  
Email [info@artgallerysociety.org.au](mailto:info@artgallerysociety.org.au)