

Art
Gallery
NSW

This project is proudly supported by the NSW Government through the Blockbusters Funding Initiative



CHILDREN'S TRAIL

WYMNIE PRIZE 2023



BIRD'S-EYE VIEW

Draw some animals that might live near or on the lake, such as waterbirds.



John Olsen has painted a bird's-eye view of Kati Thanda–Lake Eyre in South Australia using expressive lines and marks. The lake is known for having a pink colour due to the algae that grows in the water.

Olsen has painted a dry salty edge on the lake. As the weather becomes drier and the water recedes, the salt edge will grow bigger.

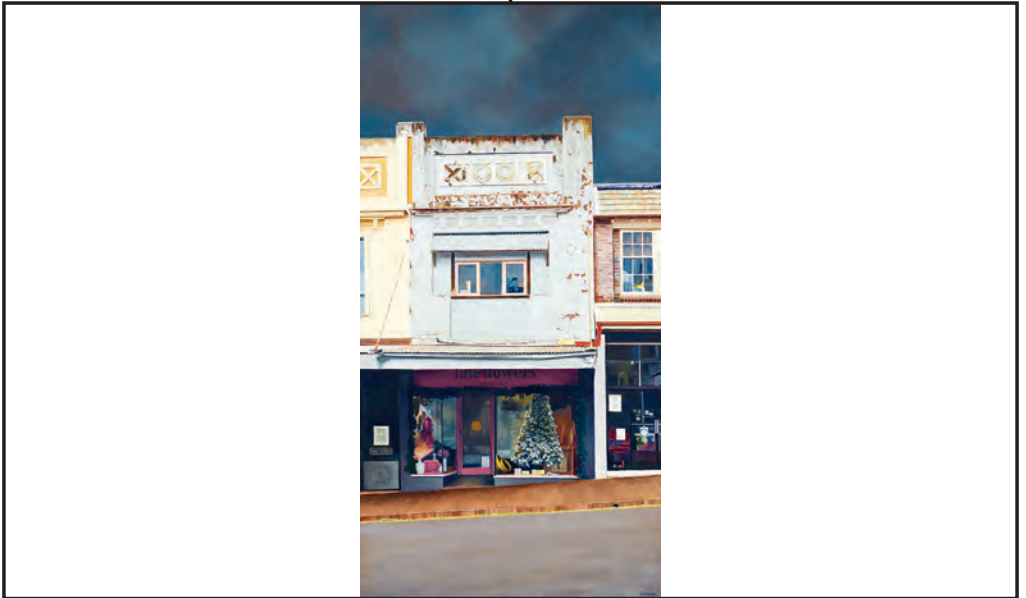
The Art Gallery of New South Wales acknowledges the Gadigal of the Eora Nation, the traditional custodians of the Country on which it stands.

Christopher McVinish has painted a section of shops in Katoomba in the Blue Mountains.

Where do you think all the people are? What are they doing?

Notice the detail on the buildings with their peeling and cracked paintwork.

Draw more shops to add to this street scene. What items do they sell?



SILENT STREET

At home, photograph and draw some shops from your local area.

SPORTING HEROES

Billy Bain has sculpted five Indigenous sports stars for this ceramic installation. From left to right, we can see tennis player Ashleigh Barty, basketball player Patty Mills, mixed martial artist Tai Tuivasa, rugby league Latrell Mitchell and netball player Donnell Wallam.

Billy admires these stars not only for their sporting skill but also for their strength, resilience and beliefs as proud Indigenous people leading positive change.



Who do you look up to and admire? Draw a design for a ceramic sculpture of your hero.



At home, use modelling clay or plasticine to create an installation of your hero or heroes.

Giles Alexander has painted the vastness of the smoke cloud that covered most of Australia during the bushfires of 2019–20, as seen from space.

The scale of the smoke cloud moving over Earth emphasises the enormity of the danger and the impact of the fires on the planet.

Imagine yourself in space looking down on where you live. How would you feel? What message would you send to your family?



SMOKE & CLOUDS

Write and illustrate your message.

At home, find more images from space of a range of weather events from different parts of the world.

Giles Alexander *When the fire came my loss was total (Australian bushfires from space)* © the artist

Doris Bush Nungarrayi has painted the site of a rock hole near Walungurru/Kintore, west of Mparntwe/Alice Springs in Central Australia.

Describe the formations of the watery landscape. Can you spot the creatures that wiggle and weave their way through it? Move your arm to mimic how they might move.



Draw your own creatures that could live in this landscape.

WATERY FORMATIONS

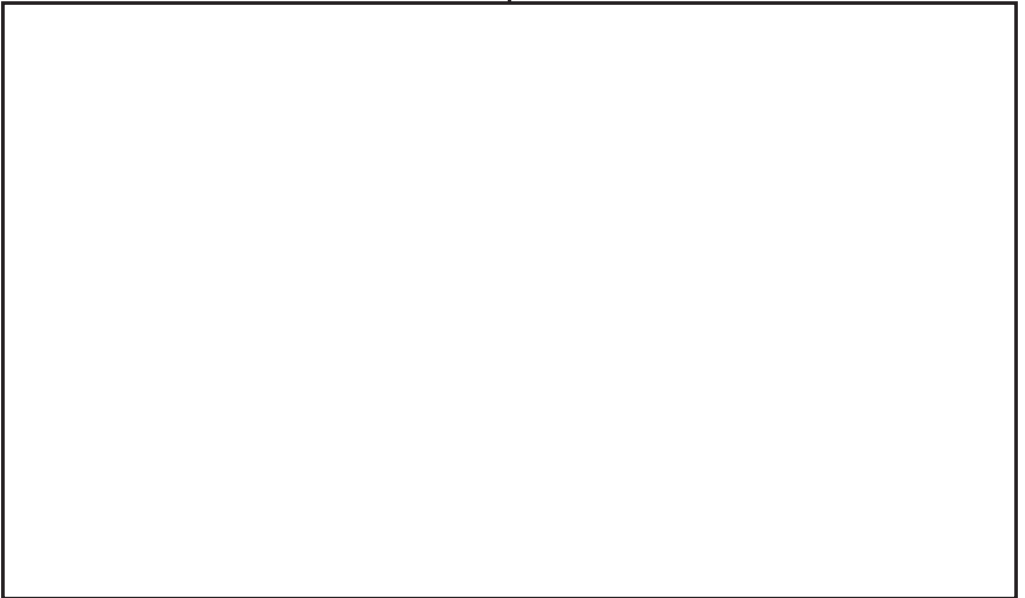
At home, paint an artwork of a place that is special to you using bold colours and shapes.

Joan Ross creates art that makes us think about our impact on nature.

Joan has portrayed a colonial woman from long ago receiving a wilted flower as a gift from a man. A giant butterfly flies across the dramatic landscape behind them, emphasising the theme of devastation.

LOST NATURE

Design a poster to help make others aware of the need to protect our environment.



At home, find out more about what plant and insect species are in danger in Australia.



Guido Maestri has painted a landscape scene at Wombarra, a quiet coastal village near Wollongong.

Notice the lush greens of the trees and plants that contrast with the oranges and browns of the sandy earth.

At home, experiment with brushes, sticks and even your fingers to paint a landscape.

Draw a park, reserve or bush scene near where you live or in a place you like to visit.

LUSH LANDSCAPE