

**Loans protected under the Protection of Cultural Objects on Loan Act 2013**

Approved borrowing institution: Art Gallery of NSW

**Exhibition**

Louise Bourgeois: Has the Day Invaded the Night or Has the Night Invaded the Day?

**Display Venue and dates**

Art Gallery of New South Wales, Art Gallery Rd, Domain, Sydney, New South Wales, Australia, 2000,  
25 November 2023 – 28 April 2024

**Lender**

The Easton Foundation

Louise Bourgeois

Arch of Hysteria

1993

bronze, polished patina, hanging piece

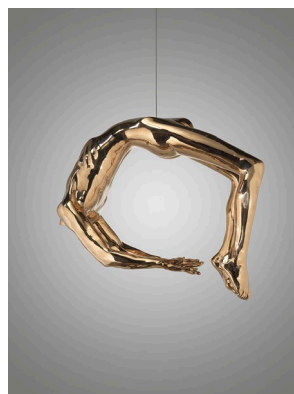
83.8 x 101.6 x 58.4 cm

Provenance

The Artist

Louise Bourgeois Trust (by descent in 2010)

The Easton Foundation (by transfer in 2011)



**Lender**

The Easton Foundation

Louise Bourgeois

The Arrival

2007

fabric, glass, wood and stainless steel

30.5 x 41.9 x 34.3 cm

Provenance

The Artist

Louise Bourgeois Trust (by descent in 2010)

The Easton Foundation (by transfer in 2016)



**Lender**

The Easton Foundation

Louise Bourgeois

Black Flames

1947-1949

bronze, paint and stainless steel

176.5 x 30.5 x 30.5 cm

Provenance

The Artist

Louise Bourgeois Trust (by descent in 2010)

The Easton Foundation (by transfer in 2011)



**Lender**

The Easton Foundation

Louise Bourgeois

Colonnata

1968

black marble

Sculpture: 58.4 x 83.2 x 69.2 cm

Two wooden timbers: 27.94 x 83.92 x 35.56 cm (each approx.)

Provenance

The Artist

Louise Bourgeois Trust (by descent in 2010)

The Easton Foundation (by transfer in 2013)



**Lender**

The Easton Foundation

Louise Bourgeois

Conscious and Unconscious

2008

fabric, rubber, thread, stainless steel, wood, and glass

175.3 x 94 x 47 cm

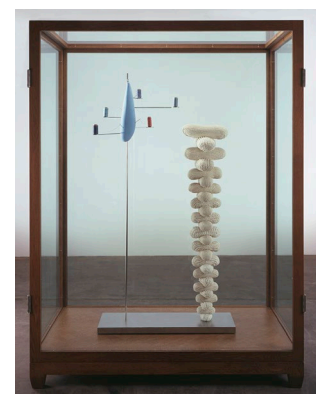
White oak, glass and stainless steel vitrine: 224.8 x 167.6 x 94 cm

Provenance

The Artist

Louise Bourgeois Trust (by descent in 2010)

The Easton Foundation (by transfer in 2013)



**Lender**

The Easton Foundation

Louise Bourgeois

Corner Piece

1947-1949

bronze, paint and stainless steel

217.8 x 30.5 x 30.5 cm

Provenance

The Artist

Louise Bourgeois Trust (by descent in 2010)

The Easton Foundation (by transfer in 2013)



**Lender**

The Easton Foundation

Louise Bourgeois

The Couple

2002

glass beads, fabric and steel

41.9 x 43.2 x 33.7 cm

Provenance

The Artist

Louise Bourgeois Trust (by descent in 2010)

The Easton Foundation (by transfer in 2013)



**Lender**

The Easton Foundation

Louise Bourgeois

Crouching Spider

2003

bronze, brown and polished patina, and stainless steel

270.5 x 835.7 x 627.4 cm

Provenance

The Artist

Louise Bourgeois Trust (by descent in 2010)

The Easton Foundation (by transfer in 2011)



**Lender**

The Easton Foundation

Louise Bourgeois

Culprit Number Two

1998

painted steel, steel, wood, glass, lead and mirror

381 x 289.6 x 335.3 cm

Provenance

The Artist

Louise Bourgeois Trust (by descent in 2010)

The Easton Foundation (by transfer in 2013)



**Lender**

The Easton Foundation

Louise Bourgeois

The Destruction of the Father

1974-2017

archival polyurethane resin, wood, fabric, and red light

237.8 x 362.3 x 248.6 cm

Provenance

The Easton Foundation (authorized exhibition copy,  
fabricated 2017)



**Lender**

The Easton Foundation

Louise Bourgeois

Echo X

2007

bronze, painted white, and steel

233.7 x 48.3 x 30.5 cm

Provenance

The Artist

Louise Bourgeois Trust (by descent in 2010)

The Easton Foundation (by transfer in 2011)



**Lender**

The Easton Foundation

Louise Bourgeois

End of Softness

1967

bronze, polished patina

17.8 x 51.8 x 38.7 cm

Provenance

The Artist

Louise Bourgeois Trust (by descent in 2010)

The Easton Foundation (by transfer in 2011)



**Lender**

The Easton Foundation

Louise Bourgeois

Eugénie Grandet

2009

mixed media on cloth

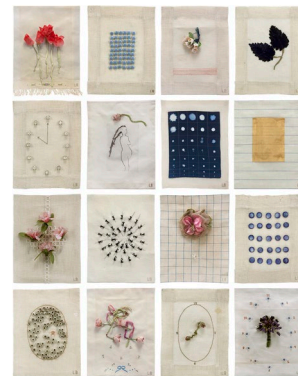
30.5 x 21.6 x 1.9 cm (each) Suite of 16

Provenance

The Artist

Louise Bourgeois Trust (by descent in 2010)

The Easton Foundation (by transfer in 2012)



**Lender**

The Easton Foundation

Louise Bourgeois

Fée couturière

1963

bronze, painted white, hanging piece

100.3 x 57.2 x 57.2 cm

Provenance

The Artist

Louise Bourgeois Trust (by descent in 2010)

The Easton Foundation (by transfer in 2011)



**Lender**

The Easton Foundation

Louise Bourgeois

The Feeding

2007

gouache on paper

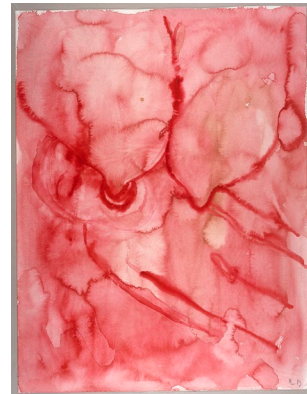
59.7 x 45.7 cm

Provenance

The Artist

Louise Bourgeois Trust (by descent in 2010)

The Easton Foundation (by transfer in 2013)



**Lender**

The Easton Foundation

Louise Bourgeois

The Feeding

2007

gouache on paper

45.4 x 59.7 cm

Provenance

The Artist

Louise Bourgeois Trust (by descent in 2010)

The Easton Foundation (by transfer in 2013)



**Lender**

The Easton Foundation

Louise Bourgeois

The Feeding

2007

gouache on paper

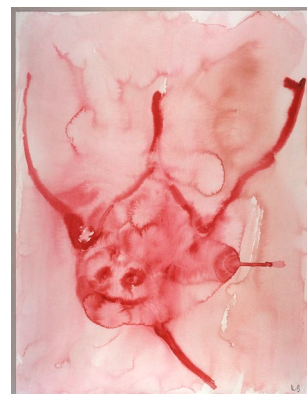
59.7 x 45.7 cm

Provenance

The Artist

Louise Bourgeois Trust (by descent in 2010)

The Easton Foundation (by transfer in 2013)





**Lender**

The Easton Foundation

Louise Bourgeois

The Feeding

2007

gouache on paper

45.7 x 59.7 cm

Provenance

The Artist

Louise Bourgeois Trust (by descent in 2010)

The Easton Foundation (by transfer in 2013)



**Lender**

The Easton Foundation

Louise Bourgeois

The Feeding

2007

gouache on paper

59.7 x 45.7 cm

Provenance

The Artist

Louise Bourgeois Trust (by descent in 2010)

The Easton Foundation (by transfer in 2013)



**Lender**

The Easton Foundation

Louise Bourgeois

The Feeding

2007

gouache on paper

59.7 x 45.7 cm

Provenance

The Artist

Louise Bourgeois Trust (by descent in 2010)

The Easton Foundation (by transfer in 2013)



**Lender**

The Easton Foundation

Louise Bourgeois

The Feeding

2007

guache on paper

45.7 x 59.7 cm

Provenance

The Artist

Louise Bourgeois Trust (by descent in 2010)

The Easton Foundation (by transfer in 2013)



**Lender**

The Easton Foundation

Louise Bourgeois

Figure qui apporte du pain

1950

bronze and stainless steel

154.3 x 30.5 x 30.5 cm

Provenance

The Artist

Louise Bourgeois Trust (by descent in 2010)

The Easton Foundation (by transfer in 2013)



**Lender**

The Easton Foundation

Louise Bourgeois

Fillette (Sweeter Version)

1968-1999

latex over cloth, hanging piece

55.9 x 21.6 x 22.9 cm

Provenance

The Artist

The Easton Foundation (by descent in 2010)





**Lender**

The Easton Foundation

Louise Bourgeois

The Found Child

2001

fabric and thread

30.5 x 68.6 x 40.6 cm

Provenance

The Artist

Louise Bourgeois Trust (by descent in 2010)

The Easton Foundation (by transfer in 2013)



**Lender**

The Easton Foundation

Louise Bourgeois

The Good Mother

2003

fabric, thread, stainless steel, wood and glass

Sculpture: 109.2 x 45.7 x 38.1 cm

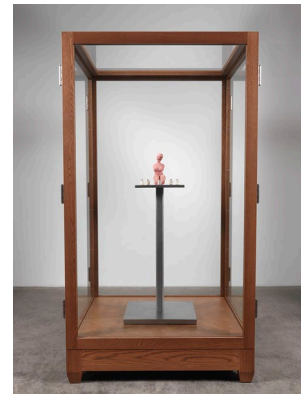
White oak, glass and stainless-steel vitrine: 196.9 x 106.7 x 86.4 cm

Provenance

The Artist

Louise Bourgeois Trust (by descent in 2010)

The Easton Foundation (by transfer in 2016)



**Lender**

The Easton Foundation

Louise Bourgeois

Hanging Janus

1968

bronze, dark and polished patina, hanging piece

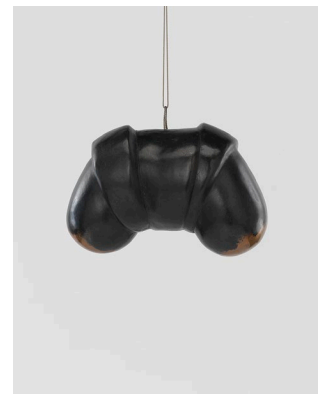
17.5 x 27.9 x 15.9 cm

Provenance

The Artist

Louise Bourgeois Trust (by descent in 2010)

The Easton Foundation (by transfer in 2011)



**Lender**

The Easton Foundation

Louise Bourgeois

Hanging Janus with Jacket

1968

bronze, dark and polished patina, hanging piece

27 x 52.4 x 16.2 cm

Provenance

The Artist

Louise Bourgeois Trust (by descent in 2010)

The Easton Foundation (by transfer in 2011)



**Lender**

The Easton Foundation

Louise Bourgeois

Heart

2004

rubber, stainless steel, metal, thread, plastic, wood, and cardboard

59.1 x 48.3 x 29.2 cm

Provenance

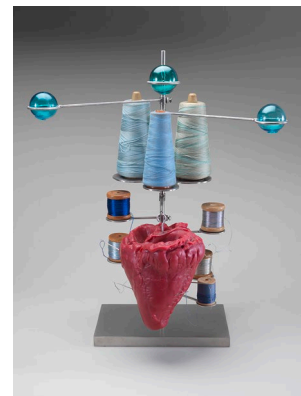
The Artist

Galerie Karsten Greve

Private Collection (acquired in 2006)

Sotheby's, London, 8 March 2017, Lot 31

The Easton Foundation (acquired from the above sale)



**Lender**

The Easton Foundation

Louise Bourgeois

Hysterical

2001

fabric, stainless steel, glass, wood and lead

45.7 x 20.3 x 15.9 cm

Provenance

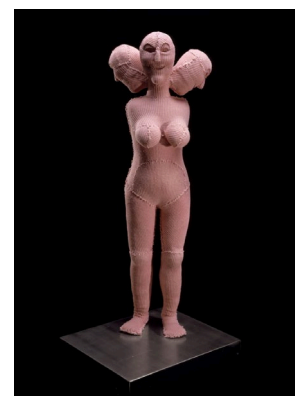
The Artist

Cheim & Read, New York

Private Collection

Christie's, London, 6 October 2017, Lot 55

The Easton Foundation (acquired from the above sale)



**Lender**

The Easton Foundation

Louise Bourgeois

I Am Afraid

2009

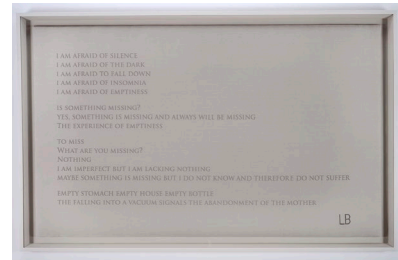
woven cotton

110.4 x 182.8 cm

**Provenance**

The Artist

Louise Bourgeois Trust (by descent in 2010)



**Lender**

The Easton Foundation

Louise Bourgeois

I Held His Eyes within My Gaze

2002

colour lithograph on cloth

15.9 x 15.9 cm

**Provenance**

The Artist

Louise Bourgeois Trust (by descent in 2010)

The Easton Foundation (by transfer in 2011)



**Lender**

The Easton Foundation

Louise Bourgeois

Janus

1968

bronze, dark and polished patina

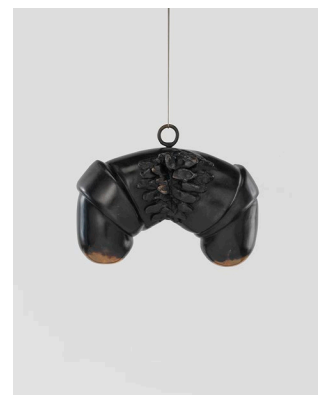
25.4 x 33 x 17.8 cm

**Provenance**

The Artist

Louise Bourgeois Trust (by descent in 2010)

The Easton Foundation (by transfer in 2011)



**Lender**

The Easton Foundation

Louise Bourgeois

Knife Couple

1949

bronze and stainless steel

171.5 x 30.5 x 30.5 cm

Provenance

The Artist

Louise Bourgeois Trust (by descent in 2010)

The Easton Foundation (by transfer in 2013)



**Lender**

The Easton Foundation

Louise Bourgeois

Lair

1962

bronze, painted

55.9 x 55.9 x 55.9 cm

Provenance

The Artist

Louise Bourgeois Trust (by descent in 2010)

The Easton Foundation (by transfer in 2011)



**Lender**

The Easton Foundation

Louise Bourgeois

Le défi II

1992

steel, paint, electric light

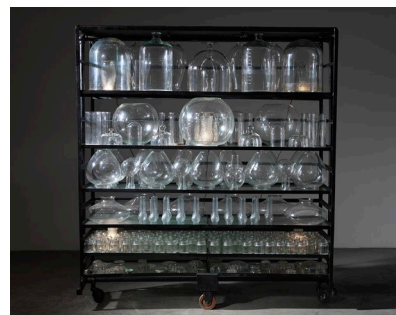
200.7 x 179.7 x 59.7 cm

Provenance

The Artist

Louise Bourgeois Trust (by descent in 2010)

The Easton Foundation (by transfer in 2016)



**Lender**

The Easton Foundation

Louise Bourgeois

Le regard

1963

latex and cloth

12.7 x 39.4 x 36.8 cm

Provenance

The Artist

Louise Bourgeois Trust (by descent in 2010)

The Easton Foundation (by transfer in 2012)



**Lender**

The Easton Foundation

Louise Bourgeois

Le Suicide Threat

1987

watercolour and ink on paper

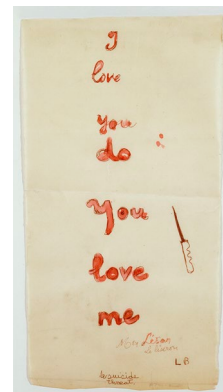
30.5 x 15.2 cm

Provenance

The Artist

Private Collection (acquired from the above in 1999)

The Easton Foundation (acquired from the above in 2022)



**Lender**

The Easton Foundation

Louise Bourgeois

Le Trani Episode

1971

plaster and latex

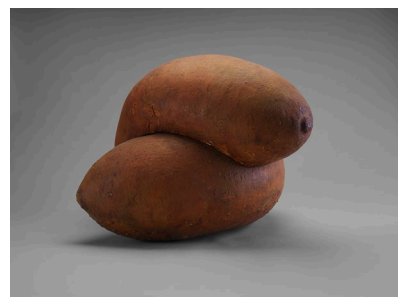
41.9 x 58.7 x 59.1 cm

Provenance

The Artist

Louise Bourgeois Trust (by descent in 2010)

The Easton Foundation (by transfer in 2011)



**Lender**

The Easton Foundation

Louise Bourgeois

Le Trani Episode

1991

alabaster and electric light

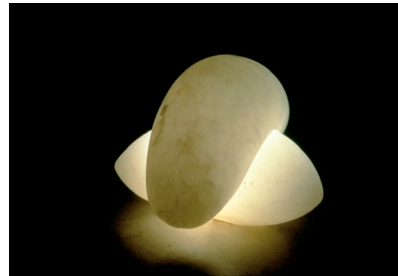
25.4 x 40.6 x 38.1 cm

Provenance

The Artist

Louise Bourgeois Trust (by descent in 2010)

The Easton Foundation (by transfer in 2016)



**Lender**

The Easton Foundation

Louise Bourgeois

Legs

1986

rubber and steel, hanging piece

Leg 1: 306 x 7.6 x 22.2cm

Leg 2: 309.2 x 7.6 x 20.3 cm

Provenance

The Artist

Louise Bourgeois Trust (by descent in 2010)

The Easton Foundation (by transfer in 2011)



**Lender**

The Easton Foundation

Louise Bourgeois

Mother and Child

1970

wax, metal pins and needles

19.1 x 12.7 x 12.7 cm

Provenance

The Artist

Louise Bourgeois Trust (by descent in 2010)

The Easton Foundation (by transfer in 2013)





**Lender**

The Easton Foundation

Louise Bourgeois

Nature Study

1984-1994

pink marble

Sculpture: 87.6 x 44.5 x 38.1 cm

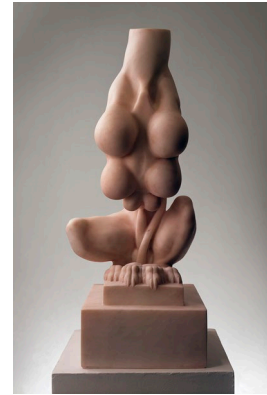
Stainless steel base: 98.4 x 55.8 x 55.8 cm

Provenance

The Artist

Louise Bourgeois Trust (by descent in 2010)

The Easton Foundation (by transfer in 2012)



**Lender**

The Easton Foundation

Louise Bourgeois

Nature Study

1986

bronze, silver nitrate patina

15.2 x 25.4 x 17.8 cm

Provenance

The Artist

Louise Bourgeois Trust (by descent in 2010)

The Easton Foundation (by transfer in 2011)



**Lender**

The Easton Foundation

Louise Bourgeois

The Needle

2001

ink and pencil on paper

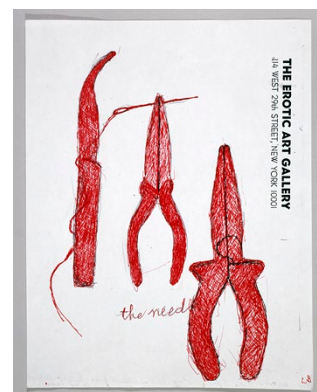
27.9 x 21.6 cm

Provenance

The Artist

Louise Bourgeois Trust (by descent in 2010)

The Easton Foundation (by transfer in 2012)



**Lender**

The Easton Foundation

Louise Bourgeois

Needle Woman

1947-1949

bronze, painted white

143.5 x 30.5 x 30.5 cm

Provenance

The Artist

Galerie Karsten Greve, Paris

Private Collection (acquired from the above in 2000)

Sotheby's, New York, 16 November 2017, Lot 73

The Easton Foundation (acquired from the above sale)



**Lender**

The Easton Foundation

Louise Bourgeois

Observer

1947-1949

bronze, dark patina and stainless steel

193 x 71.1 x 30.5

Provenance

The Artist

Louise Bourgeois Trust (by descent in 2010)

The Easton Foundation (by transfer in 2011)



**Lender**

The Easton Foundation

Louise Bourgeois

Persistent Antagonism

1946-1948

bronze, paint, metal and stainless steel

168.9 x 30.5 x 30.5 cm

Provenance

The Artist

Louise Bourgeois Trust (by descent in 2010)

The Easton Foundation (by transfer in 2011)



**Lender**

The Easton Foundation

Louise Bourgeois

Pillar

1947-1949

bronze, painted white, and stainless steel

156.2 x 30.5 x 30.5 cm

Provenance

The Artist

Louise Bourgeois Trust (by descent in 2010)

The Easton Foundation (by transfer in 2013)



**Lender**

The Easton Foundation

Louise Bourgeois

Portrait of C.Y.

1947-1949

bronze, painted white, nails and stainless steel

168.9 x 30.5 x 30.5 cm

Provenance

The Artist

Louise Bourgeois Trust (by descent in 2010)

The Easton Foundation (by transfer in 2011)



**Lender**

The Easton Foundation

Louise Bourgeois

Self-portrait

circa 1939

Gouache on cardboard

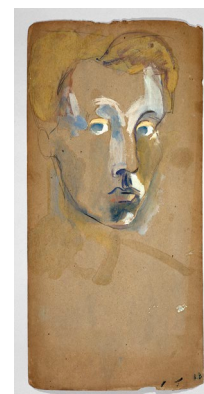
44.5 x 21.6 cm

Provenance

The Artist

Louise Bourgeois Trust (by descent in 2010)

The Easton Foundation (by transfer in 2012)



**Lender**

The Easton Foundation

Louise Bourgeois

Self-portrait

2007

bronze, with silver nitrate patina

45.7 x 66.7 x 40.6 cm "

Provenance

The Artist

Louise Bourgeois Trust (by descent in 2010)

The Easton Foundation (by transfer in 2011)



**Lender**

The Easton Foundation

Louise Bourgeois

Sleep II

1967

marble

Sculpture: 59.4 x 76.8 x 60.3 cm

Two wooden timbers: 27.9 x 83.8 x 35.5 cm (each, approx.)

Provenance

The Artist

Louise Bourgeois Trust (by descent in 2010)

The Easton Foundation (by transfer in 2012)



**Lender**

The Easton Foundation

Louise Bourgeois

Spider

1997

steel, tapestry, wood, glass, fabric, rubber, silver, gold and bone

449.6 x 665.5 x 518.2 cm

Provenance

The Artist

Louise Bourgeois Trust (by descent in 2010)

The Easton Foundation (by transfer in 2012)



**Lender**

The Easton Foundation

Louise Bourgeois

Spider IV

1996

bronze, wall piece

203.2 x 180.3 x 53.3 cm

Provenance

The Artist

Louise Bourgeois Trust (by descent in 2010)

The Easton Foundation (by transfer in 2011)



**Lender**

The Easton Foundation

Louise Bourgeois

St. Sébastienne

1947

watercolour and pencil on paper

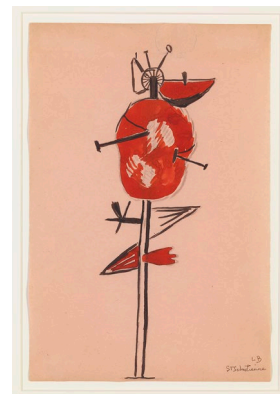
27.9 x 18.4 cm

Provenance

The Artist

Private Collection (acquired from the above in 1988)

The Easton Foundation (acquired from the above in 2022)



**Lender**

The Easton Foundation

Louise Bourgeois

Sublimation

2002

Mixed-media book of 15 pages

frame: 161.9 x 5.7 x 118.7cm (each) page: 104.6 x 147.8 cm

(each)

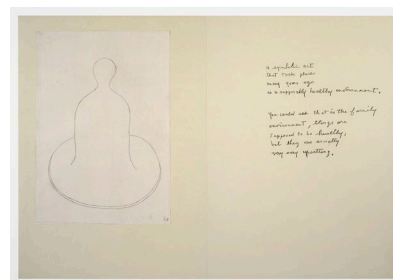
Provenance

The Artist

Galerie Hauser & Wirth, Zurich

Private Collection (acquired in 2005)

The Easton Foundation (acquired from the above in 2010)



**Lender**

The Easton Foundation

Louise Bourgeois

Torso, Self-portrait

1963-1964

bronze, painted white, wall piece

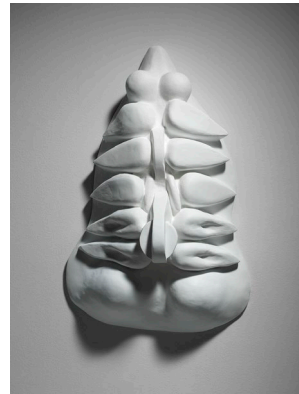
62.9 x 40.6 x 20 cm

Provenance

The Artist

Louise Bourgeois Trust (by descent in 2010)

The Easton Foundation (by transfer in 2011)



**Lender**

The Easton Foundation

Louise Bourgeois

Twosome

1991

steel, paint, electric light

190.5 x 193 x 1244.6 cm

Provenance

The Artist

Louise Bourgeois Trust (by descent in 2010)

The Easton Foundation (by transfer in 2013)



**Lender**

The Easton Foundation

Louise Bourgeois

Unconscious Landscape

1967-1968

bronze, black and polished patina

30.5 x 55.9 x 61.0 cm

Provenance

The Artist

Louise Bourgeois Trust (by descent in 2010)

The Easton Foundation (by transfer in 2011)





**Lender**

The Easton Foundation

Louise Bourgeois

Untitled

1947-1949

bronze, painted white and black, and stainless steel

162.6 x 30.5 x 30.5 cm

Provenance

The Artist

Louise Bourgeois Trust (by descent in 2010)

The Easton Foundation (by transfer in 2013)



**Lender**

The Easton Foundation

Louise Bourgeois

Untitled

1947-1949

bronze, painted white and blue, and stainless steel

173.4 x 30.5 x 30.5 cm

Provenance

The Artist

Louise Bourgeois Trust (by descent in 2010)

The Easton Foundation (by transfer in 2011)



**Lender**

The Easton Foundation

Louise Bourgeois

Untitled

1986

watercolor and pencil on paper

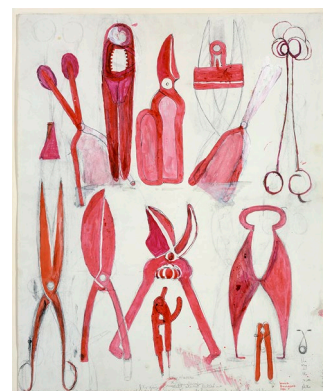
60.3 x 48.3 cm

Provenance

The Artist

Louise Bourgeois Trust (by descent in 2010)

The Easton Foundation (by transfer in 2016)



**Lender**

The Easton Foundation

Louise Bourgeois

Untitled

2006

fabric, fabric collage and embroidered text

173.4 x 99.1 cm

Provenance

The Artist

Louise Bourgeois Trust (by descent in 2010)

The Easton Foundation (by transfer in 2012)



**Lender**

The Easton Foundation

Louise Bourgeois

Untitled

1940-1990

Recto: oil and pencil on board (1990) Verso: oil on board

33.3 x 30.2 cm

Provenance

The Artist

Louise Bourgeois Trust (by descent in 2010)

The Easton Foundation (by transfer in 2012)



**Lender**

The Easton Foundation

Louise Bourgeois

Untitled

2009

fabric and wood

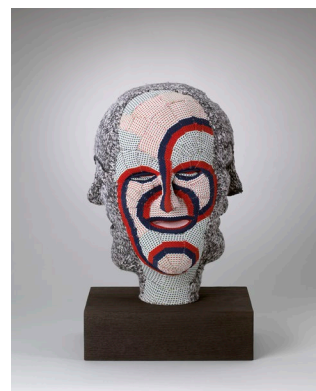
44.5 x 27.9 x 24.1 cm

Provenance

The Artist

Louise Bourgeois Trust (by descent in 2010)

The Easton Foundation (by transfer in 2013)



**Lender**

The Easton Foundation

Louise Bourgeois

Untitled

2004

aluminium

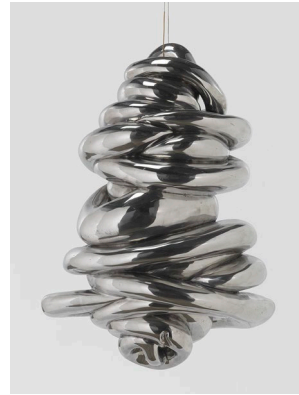
166.4 x 106.7 x 63.5 cm

Provenance

The Artist

Louise Bourgeois Trust (by descent in 2010)

The Easton Foundation (by transfer in 2011)



**Lender**

The Easton Foundation

Louise Bourgeois

Untitled (Hand)

1970

wax and cloth

4.4 x 19.1 x 12.7 cm

Provenance

The Artist

Louise Bourgeois Trust (by descent in 2010)

The Easton Foundation (by transfer in 2013)



**Lender**

The Easton Foundation,

Louise Bourgeois

Untitled (no. 7)

1993

bronze, silver nitrate patina

12.1 x 68.6 x 43.2 cm, AP

Provenance

The Artist

Louise Bourgeois Trust (by descent in 2010)

The Easton Foundation (by transfer in 2011)



**Lender**

The Easton Foundation

Louise Bourgeois

Ventouse

1990

marble, glass and electric light

86.4 x 198.1 x 81.3 cm

Provenance

The Artist

Louise Bourgeois Trust (by descent in 2010)

The Easton Foundation (by transfer in 2012)



**Lender**

The Easton Foundation

Louise Bourgeois

Woman in the Shape of a Shuttle

1947-1949

bronze, painted white, and stainless steel

166.4 x 30.5 x 30.5 cm

Provenance

The Artist

Louise Bourgeois Trust (by descent in 2010)

The Easton Foundation (by transfer in 2013)



**Lender**

The Easton Foundation

Louise Bourgeois

Woman with Packages

1949

bronze, painted white and black, and stainless steel

165.1 x 45.7 x 30.5 cm

Provenance

The Artist

Louise Bourgeois Trust (by descent in 2010)

The Easton Foundation (by transfer in 2011)



**Lender**

The Easton Foundation

Louise Bourgeois

Maman

1999

bronze, stainless steel and marble

927.1 x 891.5 x 1023.6 cm

Provenance

The Artist

The Easton Foundation (2010)



**Lender**

Fondation Beyeler

Louise Bourgeois

Untitled

circa 1970

paint on board

119.4 x 149.9 cm

Provenance

The Artist

Private Collection, New York (acquired from the above in 1999); since 2021 long-term loan at the Fondation Beyeler, Riehen



**Lender**

Hauser & Wirth Collection Services, Zurich (estab. 1992)

Louise Bourgeois

Untitled (Broom Woman)

1997

steel, steel welds, wood broom head, fabric

162.6 x 61 x 33 cm

Provenance

The Artist

Louise Bourgeois Studio

Private Collection (acquired in 2005)



## Lender

Hauser & Wirth, New York

Louise Bourgeois

Where My Motivation Comes From

2007

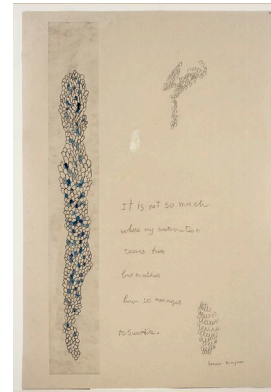
etching, ink and pencil on paper

149.9 x 99.7 cm 59 x 39 1/4"

Provenance

The Artist

Private Collection (acquired directly from the above in 2007)



## Lender

Kunstmuseum Den Haag (estab. 1866)

Louise Bourgeois

Clouds and Caverns

1982-1989

metal, wood

274.3 x 553.7 x 158 cm

Provenance

The Artist

Louise Bourgeois Trust (by descent in 2010)

The Easton Foundation (by transfer in 2013)



## Lender

Louise Bourgeois Archive

Louise Bourgeois

Translation of a loose sheet of writing by Louise Bourgeois

circa 1958

handwritten in blue ink on off-white paper

27.9 x 21.6 cm

Printed and supplied by The Easton Foundation 2023

*I was always conscious of a possibility of silence falling like the lid of a tomb and engulfing me for ever and ever.*

*The silence invaded the room and I was afraid to hear my heart beat. this danger was coming from within and that only this incessant flow of words could keep it at bay if not master it*

*to hear chaos, a cascade – the Marne locks – Beethoven a river that carries rocks and trees*

*The thunder rolling by.*



**Lender**

Louise Bourgeois Trust

Louise Bourgeois  
Breasts and Blade  
1991

bronze, silver nitrate and polished patina  
27.9 x 81.3 x 40.6 cm 27.9 x 81.3 x 81.3 cm (with blade  
extended)



Provenance

The Artist

Louise Bourgeois Trust (by descent in 2010)

**Lender**

Louise Bourgeois Trust

Louise Bourgeois  
Cell X (Portrait)  
2000

steel, glass, wood and fabric  
194.9 x 122.6 x 122.6 cm



Provenance

The Artist

Louise Bourgeois Trust (by descent in 2010)

**Lender**

Louise Bourgeois Trust

Louise Bourgeois  
Clamart  
1968

marble  
Sculpture: 78.7 x 61 x 68.6 cm  
Two wooden timbers: 38 x 73.6 x 36.8 cm (each)



Provenance

The Artist

Mr. and Mrs. Oscar Kolin, New York (acquired directly from  
the artist in 1981)

Pace Wildenstein, New York Private Collection (acquired from the above in July 1996)

Sotheby's, New York, 11 November 2008, Lot 34

Louise Bourgeois Trust (acquired from the above sale)

**Lender**

Louise Bourgeois Trust

Louise Bourgeois

The Couple

2003

aluminum, hanging piece

365.1 x 200 x 109.9 cm

Provenance

Louise Bourgeois Trust (cast 2012)



**Lender**

Louise Bourgeois Trust

Louise Bourgeois

Dagger Child

1947-1949

bronze, paint and stainless steel

192.1 x 30.5 x 30.5 cm

Provenance

The Artist

Louise Bourgeois Trust (by descent in 2010)



**Lender**

Louise Bourgeois Trust

Louise Bourgeois

Femme maison

1946-1947

oil and ink on linen

91.4 x 35.6 cm

Provenance

The Artist

Max Hutchinson Gallery, New York

Private Collection (acquired from the above in 1981)

Private Collection

The Artist (acquired from the above in 2008)

Louise Bourgeois Trust (by descent in 2010)



**Lender**

Louise Bourgeois Trust

Louise Bourgeois

Has the Day Invaded the Night or Has the Night Invaded the Day?

2007

aluminum, stainless steel, steel and diodes

581.7 x 320 x 299.7 cm

Provenance

The Artist

Louise Bourgeois Trust (by descent in 2010)



**Lender**

Louise Bourgeois Trust

Louise Bourgeois

He Disappeared into Complete Silence

1947

book of nine engravings on paper and letterpress text in portfolio

25.4 x 35.6 cm (each approx.)

Provenance

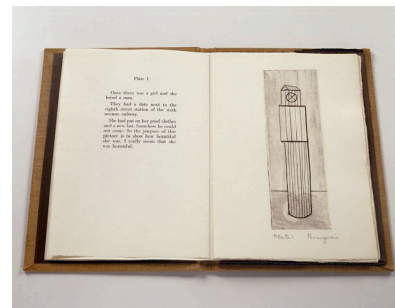
The Artist

Private Collection

Christie's, New York, 2 November 1999, Lot 165

The Artist

Louise Bourgeois Trust (by descent in 2010)



**Lender**

Louise Bourgeois Trust

Louise Bourgeois

Henriette

1985

bronze, hanging piece

152.4 x 33 x 30.5 cm

Provenance

The Artist

Louise Bourgeois Trust (by descent in 2010)



**Lender**

Louise Bourgeois Trust

Louise Bourgeois

The Hidden Past

2004

fabric, wood and stainless steel

226.1 x 76.2 x 76.2 cm

Provenance

The Artist

Louise Bourgeois Trust (by descent in 2010)



**Lender**

Louise Bourgeois Trust

Louise Bourgeois

I Love You

1987

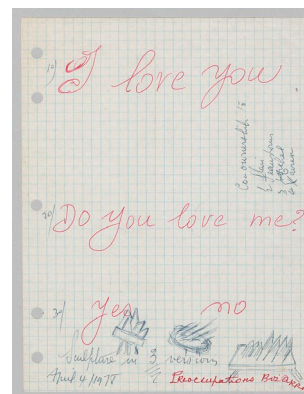
ink on graph paper

26.7 x 20.3 cm

Provenance

The Artist

Louise Bourgeois Trust (by descent in 2010)



**Lender**

Louise Bourgeois Trust

Louise Bourgeois

I Love You Do You Love Me?

1987

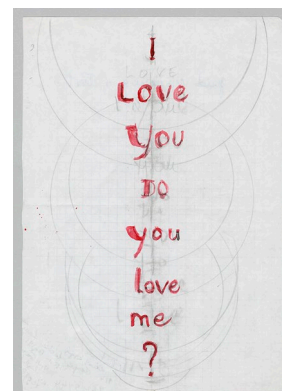
ink and pencil on paper

27.9 x 19.4 cm

Provenance

The Artist

Louise Bourgeois Trust (by descent in 2010)



**Lender**

Louise Bourgeois Trust

Louise Bourgeois  
I Redo (interior element)  
1999-2000  
steel, glass, wood and tapestry  
Overall: 49.5 x 31.8 x 31.8 cm

Provenance  
The Artist  
Louise Bourgeois Trust (by descent in 2010)



**Lender**

Louise Bourgeois Trust

Louise Bourgeois  
I Undo (interior element)  
1999-2000  
steel, glass, wood and tapestry  
Overall: 43 x 32 x 32 cm

Provenance  
The Artist  
Louise Bourgeois Trust (by descent in 2010)

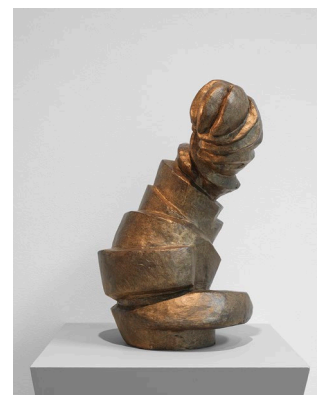


**Lender**

Louise Bourgeois Trust

Louise Bourgeois  
Labyrinthine Tower  
1962  
bronze  
45.7 x 30.5 x 26.7 cm

Provenance  
The Artist  
Louise Bourgeois Trust (by descent in 2010)



**Lender**

Louise Bourgeois Trust

Louise Bourgeois

My Blue Sky

1989-2003

gouache, watercolour, ink, pencil, coloured pencil and paper  
mounted into a wood and glass window frame

71.1 x 58.4 x 15.9 cm

Provenance

The Artist

Louise Bourgeois Trust (by descent in 2010)



**Lender**

Louise Bourgeois Trust

Louise Bourgeois

Ode à la Bièvre

2007

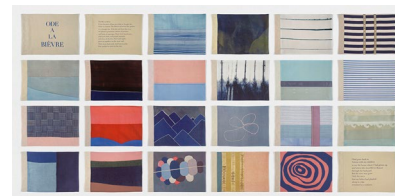
archival dyes and screenprint on cloth book

29.2 x 38.1 cm (each)

Provenance

The Artist

Louise Bourgeois Trust (by descent in 2010)



**Lender**

Louise Bourgeois Trust

Louise Bourgeois

Poids

1992

steel, glass and metal

449.6 x 373.4 x 61.6 cm

Provenance

The Artist

Louise Bourgeois Trust (by descent in 2010)



**Lender**

Louise Bourgeois Trust

Louise Bourgeois

Quarantania III

1949

bronze and stainless steel

151.1 x 37.5 x 34.9 cm

Provenance

The Artist

Louise Bourgeois Trust (by descent in 2010)



**Lender**

Louise Bourgeois Trust

Louise Bourgeois

The Quartered One

1964-1965

bronze, dark patina, hanging piece

158.1 x 61 x 50.8 cm

Provenance

The Artist

Louise Bourgeois Trust (by descent in 2010)



**Lender**

Louise Bourgeois Trust

Louise Bourgeois

Shredder

1983

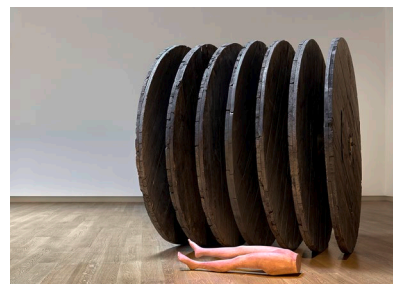
wood, metal and painted plaster

Overall: 243 x 218 x 290 cm

Provenance

The Artist

Louise Bourgeois Trust (by descent in 2010)





**Lender**

Louise Bourgeois Trust

Louise Bourgeois

Untitled

2000

fabric and stainless steel

154.9 x 30.5 x 30.5 cm

Provenance

The Artist

Louise Bourgeois Trust (by descent in 2010)



**Lender**

Louise Bourgeois Trust

Louise Bourgeois

Untitled

2005

fabric and stainless steel

172.1 x 30.5 x 30.5 cm

Provenance

The Artist

Louise Bourgeois Trust (by descent in 2010)



**Lender**

Louise Bourgeois Trust

Louise Bourgeois

Untitled

1999

fabric, wood and metal

64.8 x 20.3 x 30.5 cm

Provenance

The Artist

Cheim & Read, New York

Private Collection, MA (acquired from the above in 1999)

The Artist (acquired in 2009)

Louise Bourgeois Trust (by descent in 2010)



**Lender**

Louise Bourgeois Trust

Louise Bourgeois

Untitled (Scissors)

1986

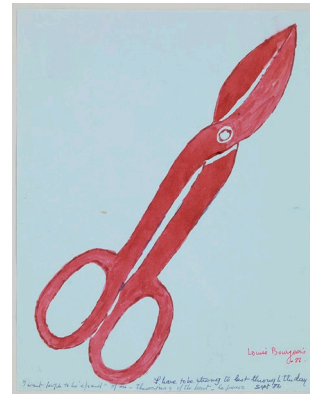
watercolor and ink on blue paper, double-sided

27.9 x 21.6 cm

Provenance

The Artist

Louise Bourgeois Trust (by descent in 2010)



**Lender**

Louise Bourgeois Trust

Louise Bourgeois

The Winged Figure

1948

bronze, paint and stainless steel

179.1 x 95.3 x 30.5 cm

Provenance

The Artist

Louise Bourgeois Trust (by descent in 2010)



**Lender**

Louise Bourgeois Trust

Louise Bourgeois

The Woven Child

2002

fabric, steel and aluminium

23.5 x 20.3 x 20.3 cm

Provenance

The Artist

Louise Bourgeois Trust (by descent in 2010)



**Lender**

Private Collection, c/o Louise Bourgeois Trust

Louise Bourgeois

10 AM Is When You Come to Me

2006

mixed media on 40 sheets of music paper in linen-covered portfolio

38.1 x 91.4 cm (each, variable) Total of 40 sheets

Provenance

The Artist

Private Collection, New York (acquired from the above in 2007)



**Lender**

Private Collection, c/o Louise Bourgeois Trust

Louise Bourgeois

The Cold of Anxiety

2001

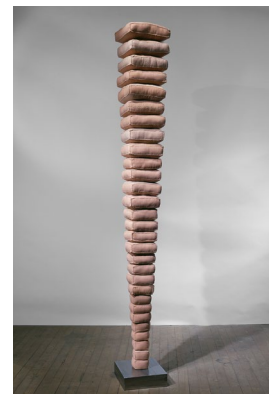
fabric and steel

208.3 x 30.5 x 25.4 cm

Provenance

The Artist

Private Collection, New York (acquired from the above in 2001)



**Lender**

Private Collection, c/o Louise Bourgeois Trust

Louise Bourgeois

Femme pieu

circa 1970

painted wood and metal pins

6.4 x 6.4 x 16.5 cm

Provenance

The Artist

Private Collection, New York (acquired from the above circa 1998)

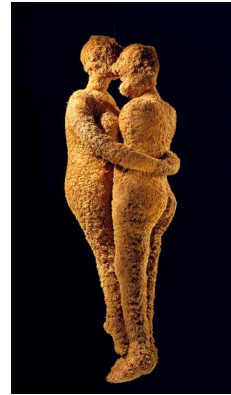


**Lender**

Private Collection, c/o Louise Bourgeois Trust

Louise Bourgeois  
Couple  
2001  
fabric, hanging piece  
50.8 x 16.5 x 7.6 cm

Provenance  
The Artist  
Private Collection, New York (acquired from the above in 2002)

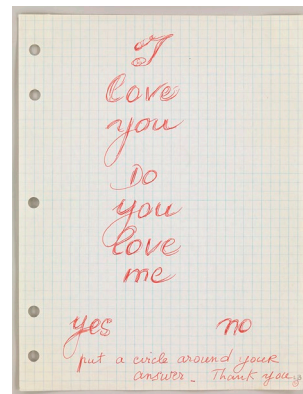


**Lender**

Private Collection, c/o Louise Bourgeois Trust

Louise Bourgeois  
I Love You Do You Love Me  
1987  
ink on graph paper  
26.7 x 20.3 cm

Provenance  
The Artist  
Private Collection, New York (acquired from the above in 1994)

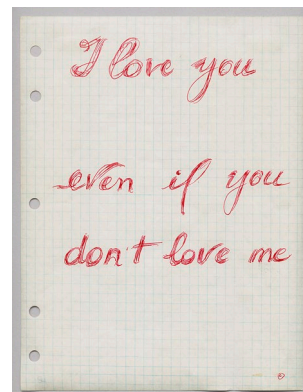


**Lender**

Private Collection, c/o Louise Bourgeois Trust

Louise Bourgeois  
I Love You Even If You Don't Love Me  
1987  
ink on graph paper  
26.7 x 20.3 cm

Provenance  
The Artist  
Private Collection, New York (acquired from the above in 1994)



**Lender**

Private Collection, c/o Louise Bourgeois Trust

Louise Bourgeois

Janus fleuri

1968

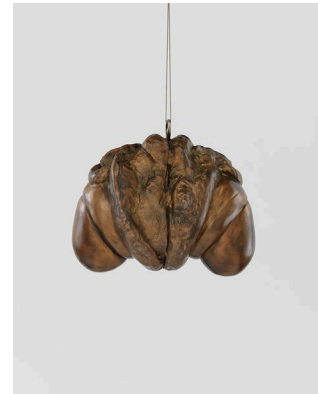
bronze, gold patina, hanging piece

25.7 x 31.8 x 21.3 cm

Provenance

The Artist

Private Collection, New York (acquired from the above in 2002)



**Lender**

Private Collection, c/o Louise Bourgeois Trust

Louise Bourgeois

Merci Mercy

1999

wall relief: lead and steel

26 x 21 x 1.3cm

Provenance

The Artist

Louise Bourgeois Trust (by descent in 2010)



**Lender**

Private Collection, c/o Louise Bourgeois Trust

Louise Bourgeois

Repairs in the Sky

1999

wall relief: lead, steel, fabric, and thread

45.7 x 66 x 1.6 cm

Provenance

The Artist

Private Collection, New York (acquired from the above in 2000)



**Lender**

Private Collection, c/o Louise Bourgeois Trust

Louise Bourgeois  
Topiary IV  
1999  
steel, fabric, beads and wood  
68.6 x 53.3 x 43.2 cm

Provenance  
The Artist  
Private Collection (acquired from the above in 1999)

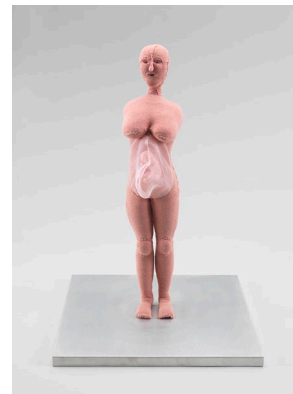


**Lender**

Private Collection, c/o Louise Bourgeois Trust

Louise Bourgeois  
Umbilical Cord  
2003  
fabric and stainless steel  
44.8 x 30.5 x 30.5 cm

Provenance  
The Artist  
Private Collection, New York (acquired from the above in 2006)



**Lender**

Private Collection, c/o Louise Bourgeois Trust

Louise Bourgeois  
Untitled (I Have Been to Hell and Back)  
1996  
embroidered handkerchief  
49.5 x 45.7 cm

Provenance  
The Artist  
Private Collection, New York (acquired from the above in 1999)



**Lender**

Private Collection, c/o Louise Bourgeois Trust

Louise Bourgeois  
Untitled (with Hand)  
1989  
pink marble  
78.7 × 77.5 × 53.3 cm

Provenance  
The Artist  
Private Collection, New York (acquired from the above in 1989)



**Lender**

Sammlung Goetz

Louise Bourgeois  
The Waiting Hours  
2007  
fabric, suite of 12  
38.4 x 31.1 cm (each) 12 in total

Provenance  
The Artist  
Louise Bourgeois Trust (by descent in 2010)  
Hauser & Wirth, Zurich  
Sammlung Goetz (acquired from the above in 2013)



**Lender**

Tate Modern

Louise Bourgeois  
À l'infini  
2008-2009  
etching and mixed media on paper  
Plate in 2 horizontal parts: 90.7 × 152.1 cm (each) Sheet:  
101.6 × 152.4 cm (each) Framed: 119 x 170 x 6.8 cm (each)  
Suite of 16

Provenance  
The Artist  
Louise Bourgeois Trust (by descent in 2010)  
Hauser & Wirth  
Artist Rooms Foundation (acquired from the above in 2013)





**Lender**

Posten Moderne, Trondheim, Norway

Louise Bourgeois

Arch of Hysteria

2004

fabric, hanging piece

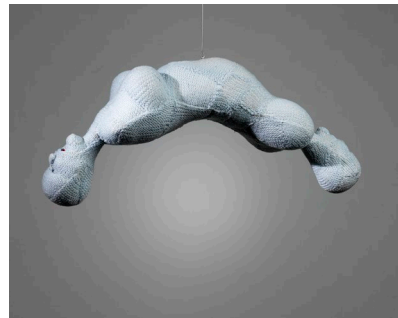
12.7 x 51.4 x 22.9 cm

**Provenance**

The Artist

Louise Bourgeois Trust (by descent in 2010)

Posten Moderne, Trondheim, Norway (acquired from the  
above in 2022)



Date on which this information was first published to the Gallery's website 11 September 2023.

Revised date 15 September 2023.

More information: [www.artgallery.nsw.gov.au/about-us/corporate-information/pcol/](http://www.artgallery.nsw.gov.au/about-us/corporate-information/pcol/)