

Corporate events





Contents

Welcome	5
Naala Nura, south building	
Kaldor Hall	7
Function room	10
Art Gallery Restaurant, Crafted by Matt Moran	13
20th-century galleries	14
Domain Theatre and foyer	16
Centenary Auditorium	19
Naala Badu, north building	
Meers Hall	23
Atrium	24
MOD Dining	26
Harbour terrace	30
Viewing terrace	31
Catering	33
Exhibition viewing	35
Event inclusions	37
Your questions answered	38
Level arrangements	40
Precinct map	42
Contact	43

We acknowledge the Gadigal people of the Eora Nation,
the traditional custodians of the Country on which the
Art Gallery of New South Wales stands.



Centrally located near the Sydney CBD, in one of the world's most beautiful cultural precincts, the Art Gallery of New South Wales has a range of versatile event spaces across two buildings for a variety of corporate functions, from conferences to cocktail events, dinners and award nights.

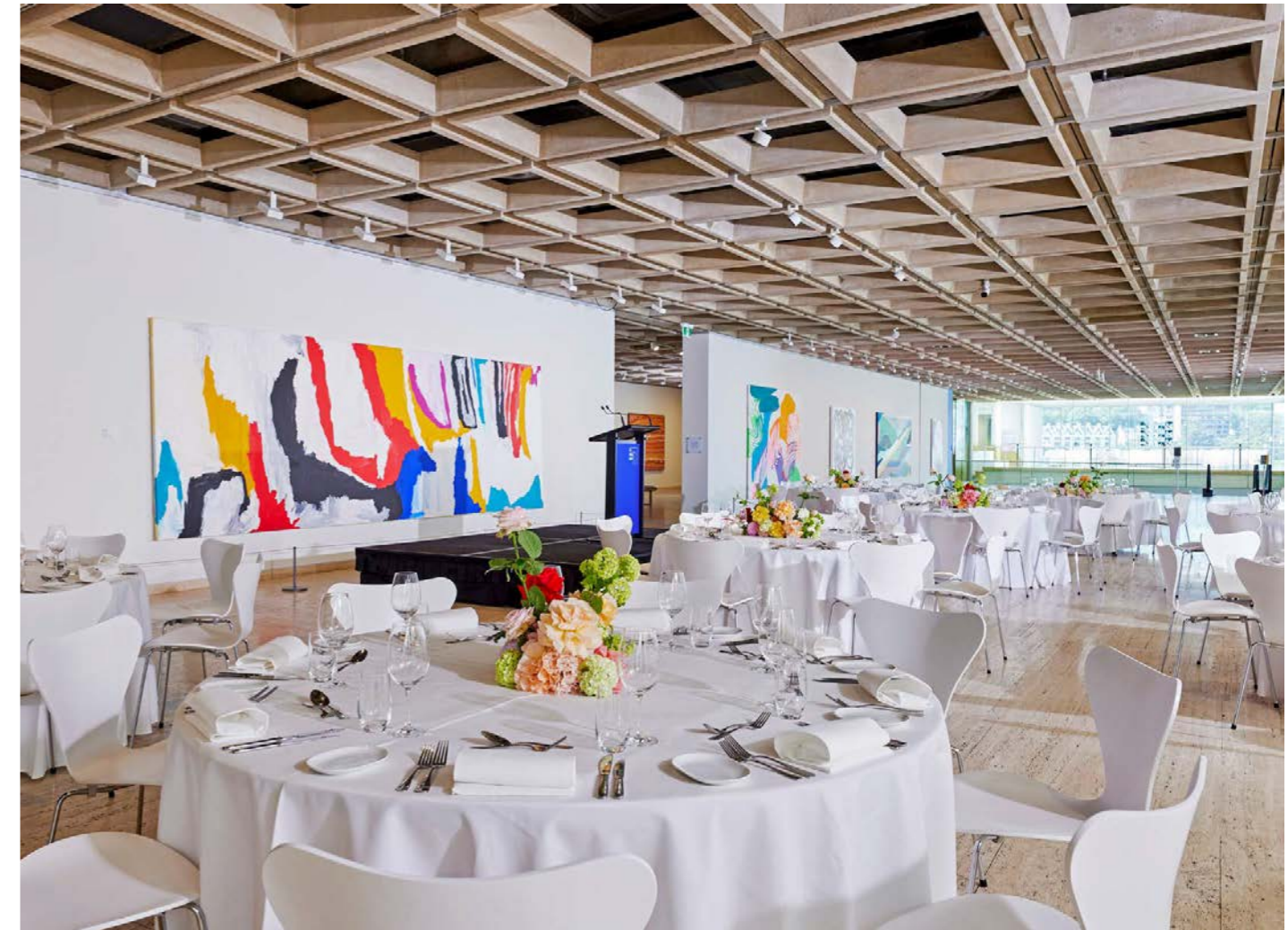
As one of Australia's flagship museums – with magnificent architecture and world-class art, nestled between tranquil parklands and the picturesque harbour – the Art Gallery provides numerous opportunities to create unique and memorable corporate experiences.

With our premium catering partners, The Fresh Collective in collaboration with chefs Matt Moran and Clayton Wells, we can help you deliver an event your guests are sure to remember. Our dedicated events team, alongside our experienced AV staff, will ensure your event runs smoothly and provide you with exceptional service every step of the way.

Venue hire at the Art Gallery contributes to bringing art to the community by funding Gallery programs. When you choose us for your event or function, you'll be directly supporting the arts in Australia.



Photo © Art Gallery of New South Wales, James Horan



Kaldor Hall

The Kaldor Hall is one of our most unique gallery spaces with an ever-changing display of some of the best international and Australian art.

The space is suitable for a wide range of event set-ups. The room can accommodate up to 350 guests on banquet tables, with space for a stage for speeches and entertainment, and up to 900 guests for a cocktail-style event. It is a perfect space for large networking events in conjunction with a viewing of an exhibition, or an awards night with presentations.

Boasting a modernist ceiling and travertine marble floor, this striking space is guaranteed to impress your guests. The room features an in-ceiling PA system and overhead rigging capabilities for projectors, screens and additional lighting.

Capacities:

- 900 cocktail-style
- 350 banquet dinner
- 280 cabaret-style
- 220 theatre-style with in-room catering
- 216 on long tables

Function types:

- large dinners and cocktail events
- awards nights
- fundraising dinners
- PR events
- product launches
- livestreamed and hybrid events

Additional features:

- accommodates a wide range of technical production requirements, including events that require projectors and screens
- dimmable house lights
- full-range in-ceiling speaker system





Function room

The Art Gallery's function room is a bright, contemporary space, which can be used as a semi-private event space during Art Gallery opening hours or exclusively hired for evening events. It is also used as a catering break-out space for seminars or conferences in the Centenary Auditorium.

The room can also be hired on Wednesday evenings for dinner and cocktail events, during our Art After Hours late opening. A wonderful experience for guests is the addition of personal tours of the art on display, including major ticketed exhibitions, with our engaging guides.

Adjacent to the Art Gallery Restaurant, both spaces can be joined to create a larger space suitable for up to 300 guests for an evening cocktail-style event.

Capacities:

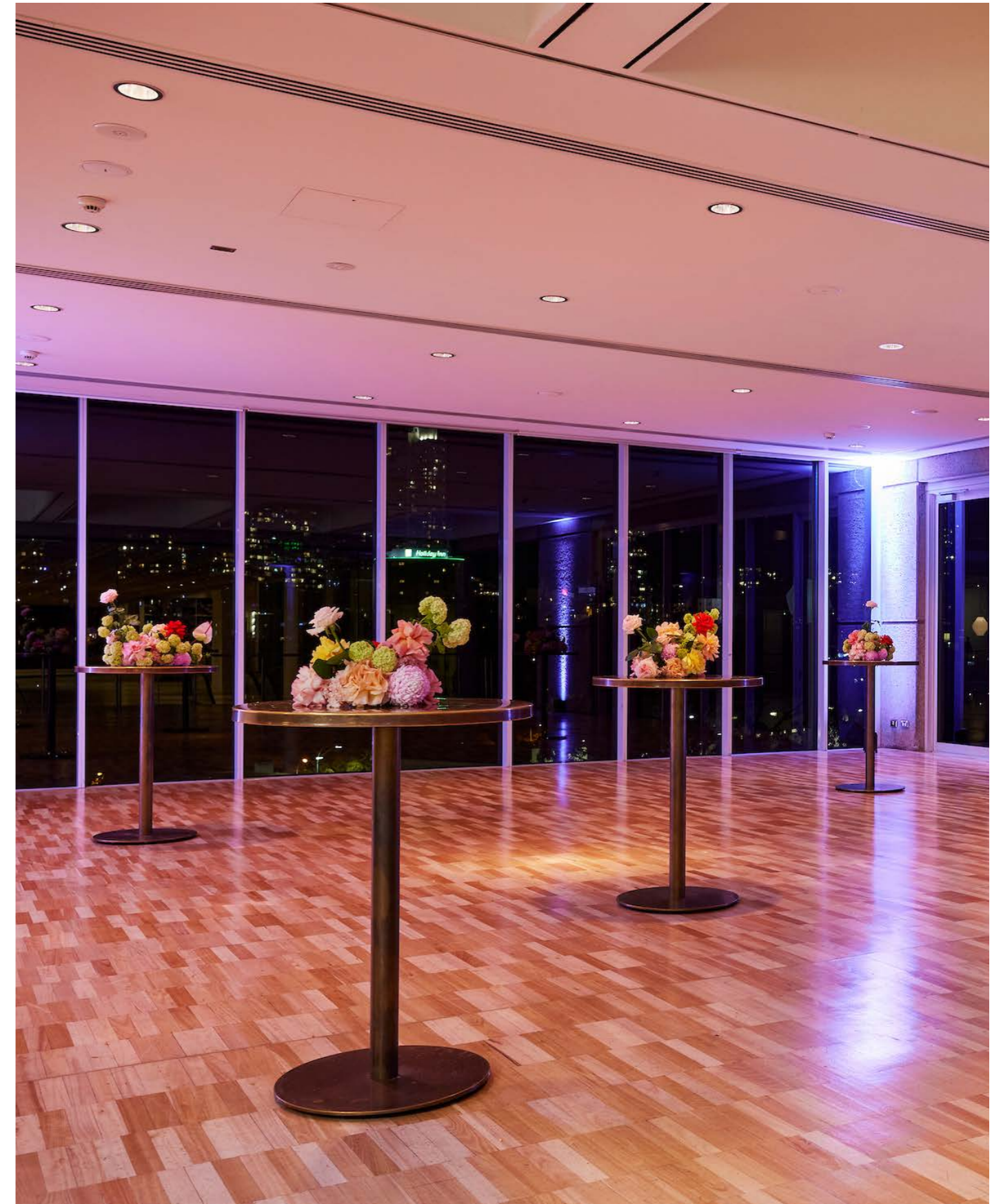
- 180 cocktail-style
- 120 banquet dinner
- 105 theatre-style
- 70 banquet lunch

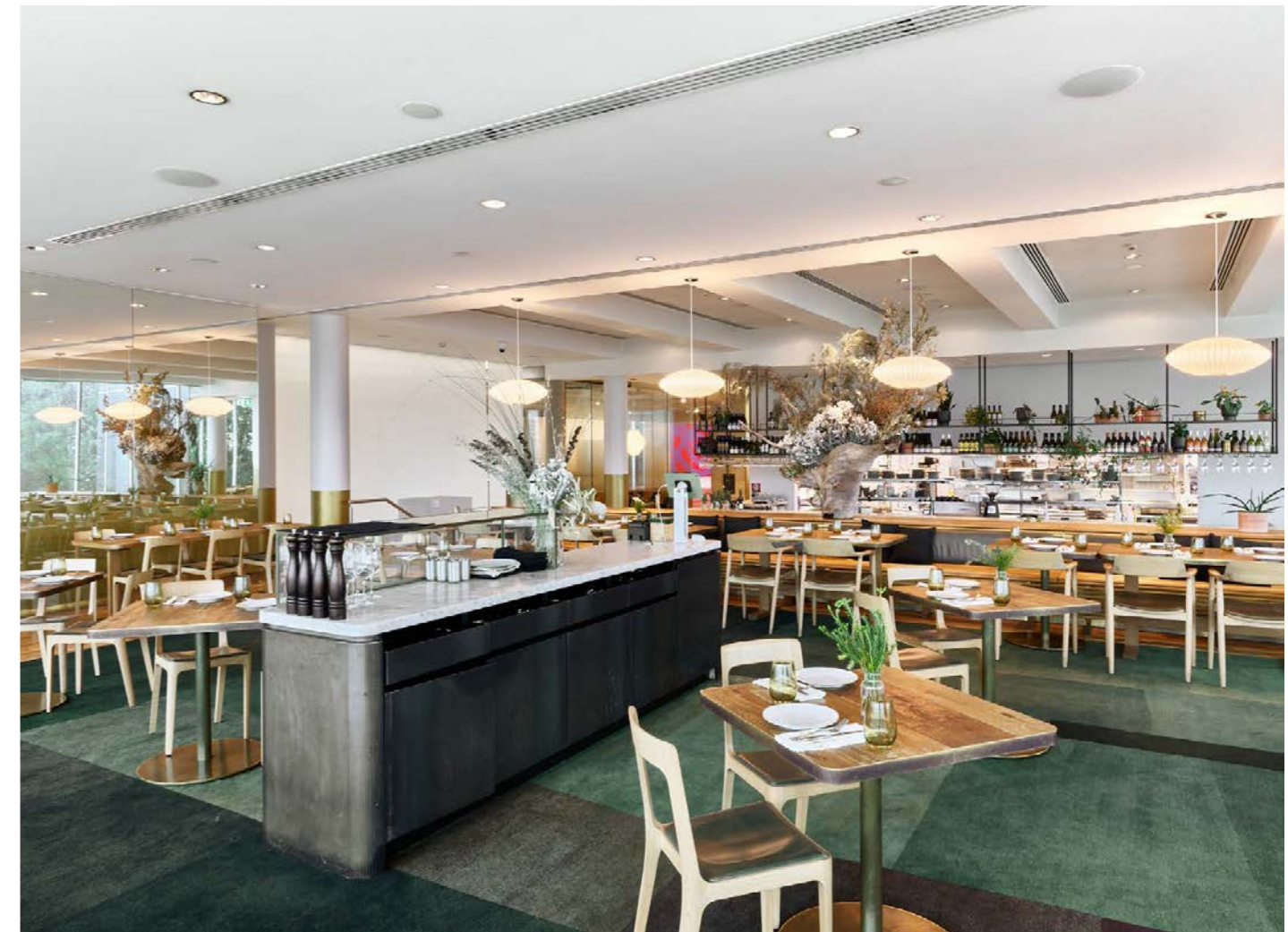
Function types:

- breakfast events
- PR launches
- conference catering
- mid-sized cocktail and dinner events

Additional features:

- a blank canvas for styling and theming opportunities
- full-range in-ceiling speaker for background music or capability to set up a separate PA in the room for speeches and entertainment
- LCD presentation screens for displaying slides and video (additional hire fees apply)





Art Gallery Restaurant, Crafted by Matt Moran

The Art Gallery Restaurant, Crafted by Matt Moran has a warm, inviting feel with floor-to-ceiling windows and gorgeous views over East Sydney.

The existing furniture is used for events and minimal additional styling is required to create an inviting space for your guests to enjoy. The space is ideal for more casual, mid-sized networking and dinner events. The function room next door can be used as a pre-drinks area.

Event menus developed by Matt Moran and delivered by our exclusive catering partner, The Fresh Collective, paired with the stunning location, set the restaurant apart as a space to host an event.

Capacities:

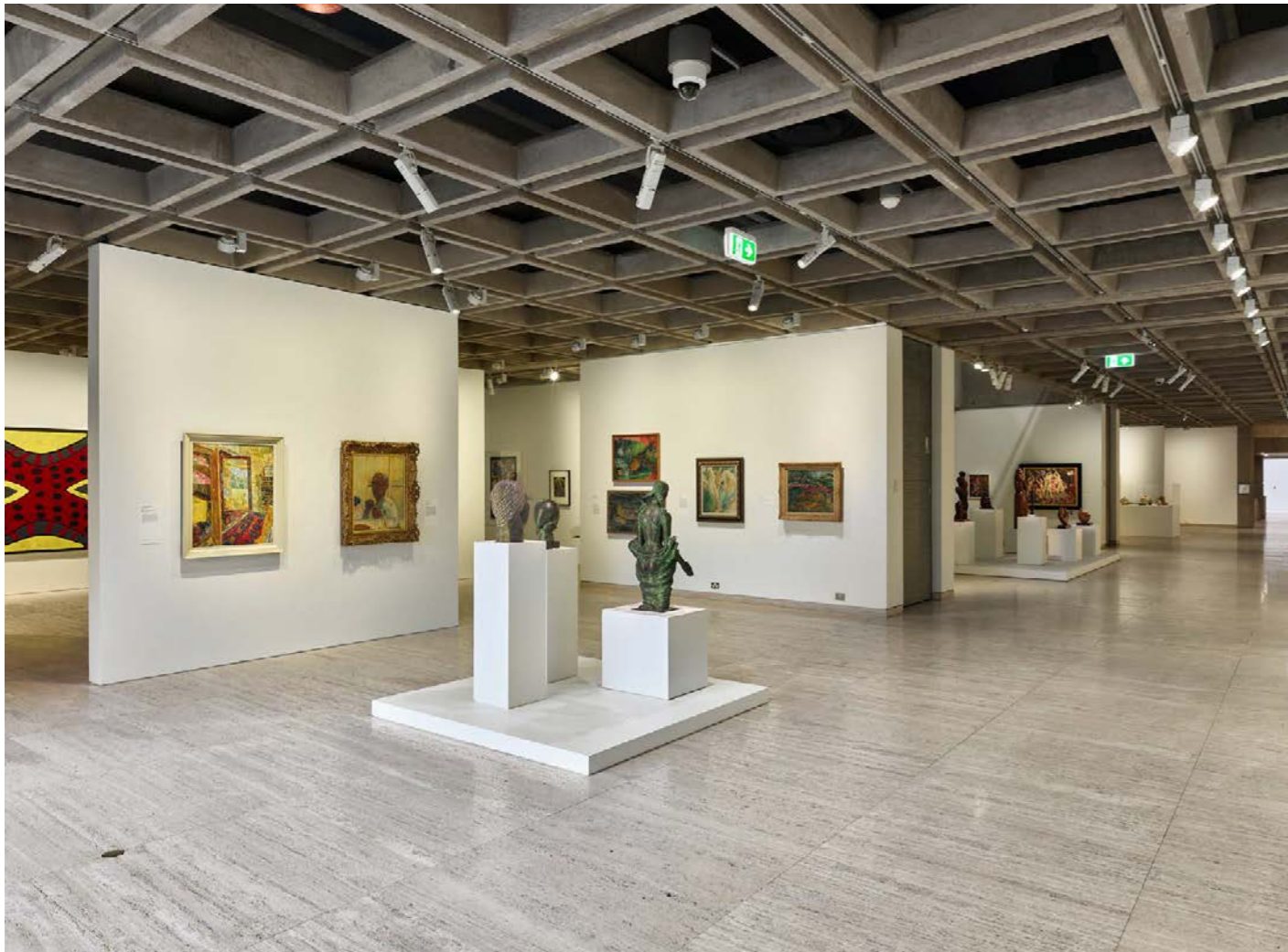
- 120 cocktail-style
- 116 on long tables, using existing furniture

Function types:

- casual cocktail events
- dinner events with presentations
- Christmas functions

Additional features:

- in-ceiling speaker system with handheld microphone
- background music via restaurant tablet or separate PA system
- LCD presentation screens for displaying slides and video (additional hire fees apply)



20th-century galleries

The 20th-century galleries have reopened after an extensive refurbishment, with architect Andrew Andersons' double-height atrium revealed for the first time in over a decade and a new display of artworks from the collection.

Extending over two floors, these galleries display works by some of the most renowned and best-loved artists from Australia and overseas, from Margaret Preston and Brett Whiteley to Francis Bacon and Wassily Kandinsky.

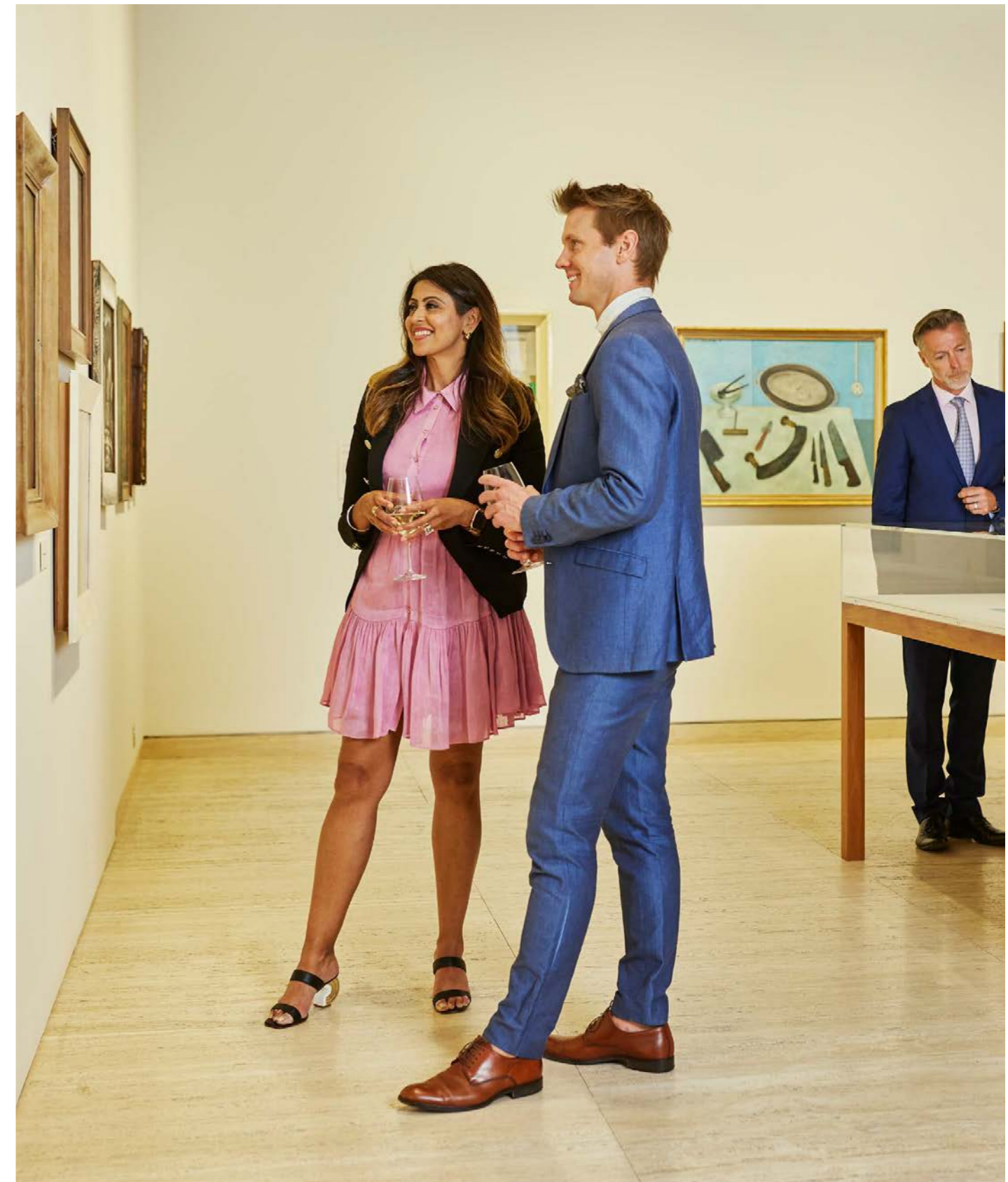
The rooms can be used for small to mid-sized cocktail functions and pre-dinner drinks. As a unique offering, we can also provide our engaging guides to talk to your guests about the artworks during the function.

Capacities:

- 350 pre-dinner drinks
- 150 cocktail-style

Function types:

- small to mid-sized cocktail events
- drinks before dinner in the Kaldor Hall
- tours for event guests





Domain Theatre and foyer

Featuring a large, cinema-sized screen and comfortable seating, the Domain Theatre is a fully equipped, tiered auditorium suitable for a wide range of production requirements.

Featuring a DCP player, the theatre is also a perfect option for film premieres and screenings. The adjoining foyer can be used for registration and catering.

The theatre is used by the Art Gallery to host our film and lecture programs at various times during the week. To check its availability for private hire, please contact the events team.

Capacities:

- 330 theatre
- 200 foyer, cocktail-style (the function room on the ground level is used for conference catering spillover)

Function types:

- panel discussions
- conferences
- award ceremonies
- film screenings
- livestreamed and hybrid events

Additional capabilities:

- variable mask allows for screen dimensions ranging from a maximum width of 11 metres and a maximum height of 4 metres
- Christie 10K projector with DVI, SDI and HDMI inputs
- in-built lectern PC for vision foldback
- dimmer-controlled house lights
- DCP, 35 mm & 16 mm projection capabilities (requires Art Gallery projectionist)





Centenary Auditorium

The Centenary Auditorium is perfect for a wide range of events, including one-to-two day conferences or evening presentations. The room offers comfortable, tiered seating and state-of-the-art audio-visual equipment.

During the day, hold your conference in the auditorium on lower level 1 and use the function room on the ground level for break-out sessions and catering.

In the evening, combine a presentation with a networking experience in one of the Art Gallery's other event spaces, or with a viewing of an exhibition.

Capacities:

- 90 theatre

Function types:

- conferences
- seminars
- AGMs
- livestreamed and hybrid events

Additional capabilities:

- variable mask allows for screen dimensions ranging from a maximum width of 9.3 metres and a maximum height of 2.5 metres
- 5.1 surround sound
- dimmer-controlled house lights with a variety of pre-sets
- in-built lectern PC for vision foldback





Meers Hall

Meers Hall is the most flexible space in the Art Gallery's our north building, now known as Naala Badu. The hall features timber flooring and floor to ceiling windows with views out to the sculpture garden and to the adjacent sculpture gallery and atrium. The room is located on lower level 2.

The space is suitable for a wide variety of event set-ups and comes with a range of state-of-the-art audio-visual equipment. It can be hired during the day and in the evening. Included in the venue hire are banquet tables and seating for up to 300 guests.

Capacities:

- 450 cocktail-style
- 280 banquet dinner
- 150 banquet lunch
- 120 cabaret-style lunch with networking space (8 guests per table)
- 300 theatre-style (evening)
- 200 theatre-style (daytime)

Function types:

- breakfast and lunch events
- conferences
- large dinners and cocktail events
- awards nights
- fundraising dinners
- livestreamed and hybrid events

Additional features:

- full-range in-ceiling speaker system
- event production lighting rig
- wired and wireless microphones for presenters, performers and music
- projection presentation screen capabilities
- broadcast-quality cameras for livestreaming, broadcast, event filming, video-conferencing and IMAG
- 360-degree grey-out blinds for discreet daytime events and set-ups



Atrium

The spectacular sculpture gallery and adjoining double-height atrium is at the heart of the Art Gallery's north building, now known as Naala Badu.

The space features a changing selection of sculptural works and is perfectly located to take in the incredible architectural features of the building.

It is our largest space for cocktail events, allowing access to the beautifully landscaped sculpture garden. The space is also adjacent to Meers Hall so it is ideal as a pre-dinner drinks space.

Capacities:

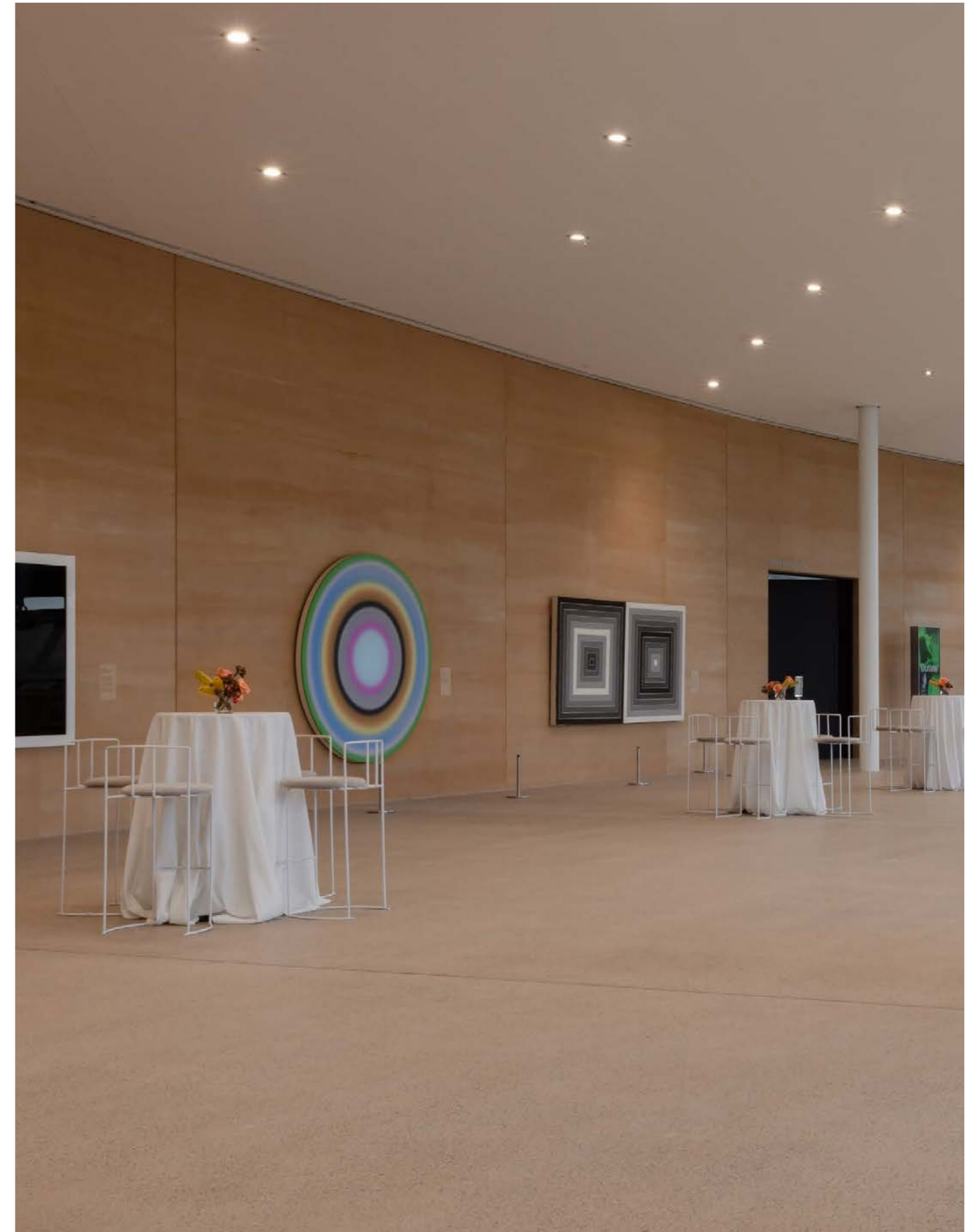
- 1000 cocktail-style
- 280 pre-dinner drinks

Function types:

- large cocktail events
- pre-dinner drinks

Additional features:

- beautiful gallery space with courtyard access
- full-range in-ceiling speaker system capable of supporting speeches, background music and select live music set-ups
- LCD presentation screens for displaying slides and video (additional hire fees apply)





MOD Dining

This light-filled space with its impressive, curved roof has views to Woolloomooloo Bay, Sydney Harbour and East Sydney. MOD Dining can accommodate up to 80 guests on long tables using the existing furniture.

This space connects seamlessly to the harbour terrace, providing even more event planning options. Both spaces can be hired outside of Art Gallery opening hours.

Capacities:

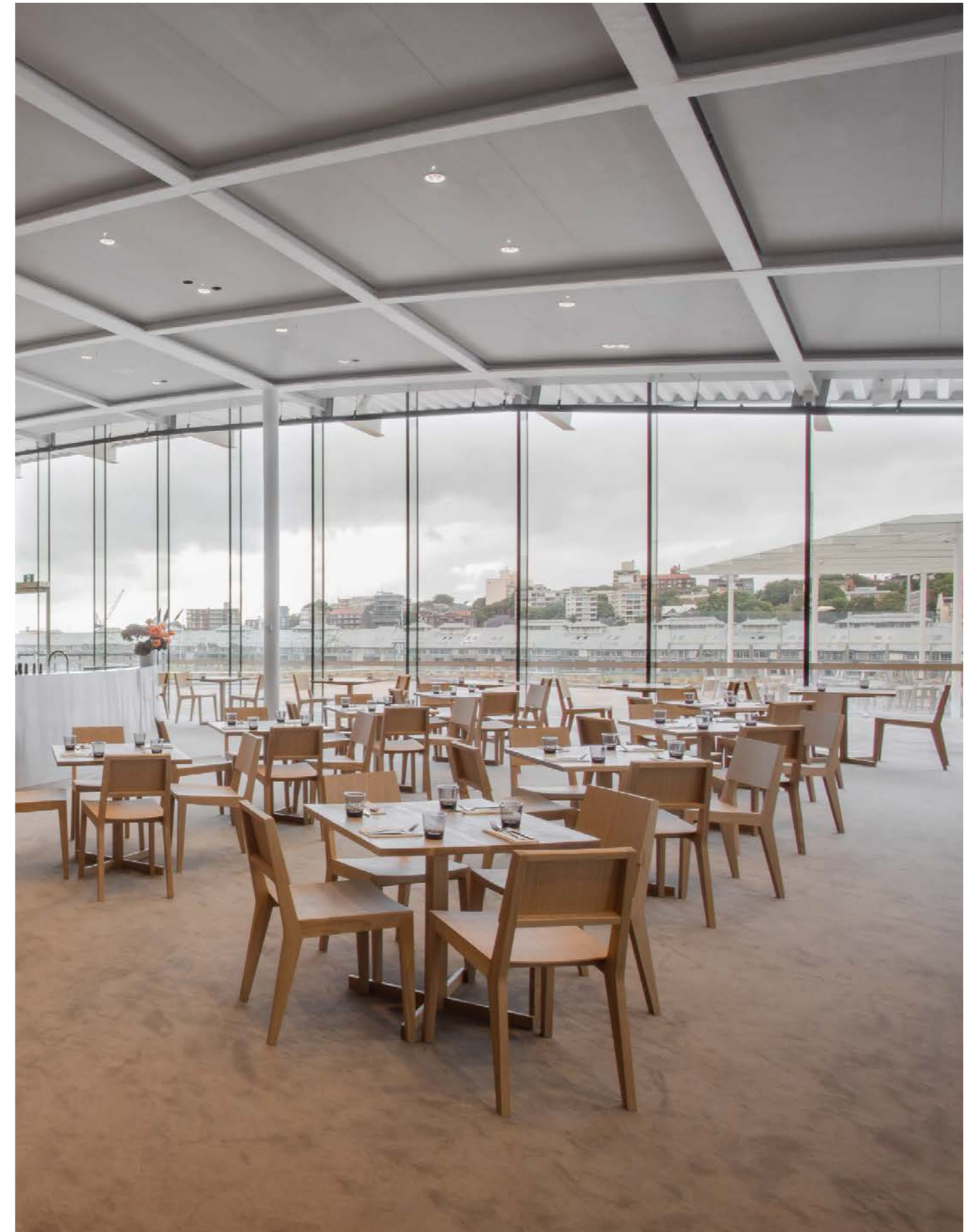
- 150 cocktail-style
- 80 on long tables, using existing furniture

Function types:

- intimate cocktail and dinner events
- casual, mid-sized networking events

Additional features:

- a prime location to take in all the Art Gallery has to offer: architecture, art and harbour views
- full-range in-ceiling speaker system capable of supporting speeches, background music and select live-music set-ups
- LCD presentation screens for displaying slides and video (additional hire fees apply)







Harbour terrace

Overlooking Woolloomooloo Bay, the harbour terrace is an iconic destination for entertaining and art experiences in Sydney.

The terrace has capacity to host up to 300 guests cocktail-style, making it perfect for pre-dinner drinks for events in either the adjoining MOD Dining (80 seated) or Meers Hall (300 seated) on lower level 2.

Note: Amplified sound is not possible on outdoor terraces. Wet-weather option for drinks is available. Terraces close at 10pm. Additional charges may apply for the use of this space.

Capacities:

- 300 cocktail-style

Function types:

- small to mid-sized cocktail events
- drinks before dinner in MOD Dining or hall

Additional features:

- covered seating area for 100 guests
- landscaped perimeter
- wonderful views of both Art Gallery buildings and the art garden



Viewing terrace

With views out to Woolloomooloo Bay, the Royal Botanic Garden Sydney and the Sydney CBD skyline, this outdoor space is a perfect warm-weather option for drinks. Situated on the ground level and accessible from the Entrance Pavilion, it is the most elevated of the three terraces in our new building. This spacious area features a small glass canopy for weather and sun protection, casual seating and landscaping.

It has capacity to host up to 300 guests cocktail-style, making it perfect for pre-dinner drinks for dinners in the hall. The terrace can be hired for events outside of Art Gallery opening hours.

Note: Amplified sound is not possible on outdoor terraces. Wet-weather option for drinks is available. Terraces close at 10pm. Additional charges may apply for the use of this space.

Capacities:

- 300 cocktail-style

Function types:

- small to mid-sized cocktail events
- drinks before dinner in the hall



Catering

The Art Gallery of New South Wales' exclusive catering partner is The Fresh Collective.

The Fresh Collective provides exceptional event catering and signature menus for the Art Gallery in collaboration with Australian chefs Matt Moran and Clayton Wells.

Chef and restaurateur Matt is the tour de force behind some of Australia's most celebrated dining establishments. At the heart of every one of his endeavours lies a passion for quality produce that is fresh and locally sourced. This passion, shared by Fresh, is reflected in contemporary and innovative menus that change with the seasons.

Matt's menus are perfectly complemented by Clayton Wells' unique culinary offering. Clayton is one of Australia's most exciting and innovative chefs, creating food with big, robust flavours and a focus on colour, authenticity and presentation.

With over 40 years' industry experience, Fresh delivers seamless events in one of Sydney's most iconic venues, with outstanding food and drinks presented with flair by professional staff.



Exhibition viewing

One of our unique offerings at the Art Gallery is the opportunity to enjoy a personal guided tour of the art on display. Our experienced guides are available until 8pm for tours, or they can be stationed within an exhibition to provide insights into the art while your guests network.

We can tailor the offering specifically for your event based on our exhibition schedule. An engaging add-on, this experience is what makes an event at the Art Gallery so special and elevates any corporate event.



Event inclusions

General inclusions:

Depending on the event package, the Art Gallery offers a range of inclusions as part of your event, including:

- a dedicated event manager and audio-visual manager
- a range of furniture
- free Wi-Fi
- cloaking
- recommendations for suppliers for a range of products and services

Audio-visual:

We provide a wide range of technical production and audio-visual equipment, including:

- staging
- black lectern and microphone
- handheld microphones
- PA system
- background music
- decorative lighting
- all existing theatre equipment

We also work with preferred suppliers to source a variety of audio-visual production solutions. The events team can provide costs for our standard audio-visual packages on request. If you have specific production requirements, the Art Gallery's audio-visual manager can work with you to tailor a quote. You will have one point of contact for seamless end-to-end event delivery.

Your questions answered

How do I check event space availability?

Please fill in the [online enquiry form](#), or contact a member of the Events team, who would be delighted to check availability for you.

Is the venue hired exclusively?

Sometimes we do have multiple events running concurrently in the same building. In this instance the events would be held in separate spaces and not impact one another. The start times could be staggered if necessary.

Are there any styling limitations?

As we are an art gallery, we will need to approve any theming or styling elements in advance of the event. There are some limitations, such as no naked flames (LED candles permitted) or balloons. There are also limitations around branding while the Art Gallery is open to the public. Please speak to the events team if you have any questions about styling or theming.

What time can we start setting up for events and what time can suppliers arrive?

Bump-in for evening events is from 4pm and suppliers can arrive from 3.30pm at the loading dock. Bump-in to Meers Hall is from 3pm and suppliers can arrive at 2.30pm at the loading dock. Soundchecks can take place after 5pm when the Art Gallery closes to the public. The Art Gallery and catering event teams will liaise with your suppliers in the lead up to organise bump in/out timings, delivery instructions, and answer any questions they may have. Bump-in for day time events is 1.5 hours prior to the start of the event.

What if my event requires more time to bump in?

Earlier bump-ins in our theatres, for example, can be accommodated depending on availability. The events team can provide further information around earlier bump-ins for other spaces, based on your requirements.

Can we organise our own suppliers?

Yes, you are welcome to organise your own suppliers or the events team would be delighted to recommend suppliers who have worked with the Art Gallery before.

Can we organise our own catering?

We have an exclusive agreement with our caterers, and they would be delighted to work with you to tailor a package to suit your requirements.

Where is the closest car park?

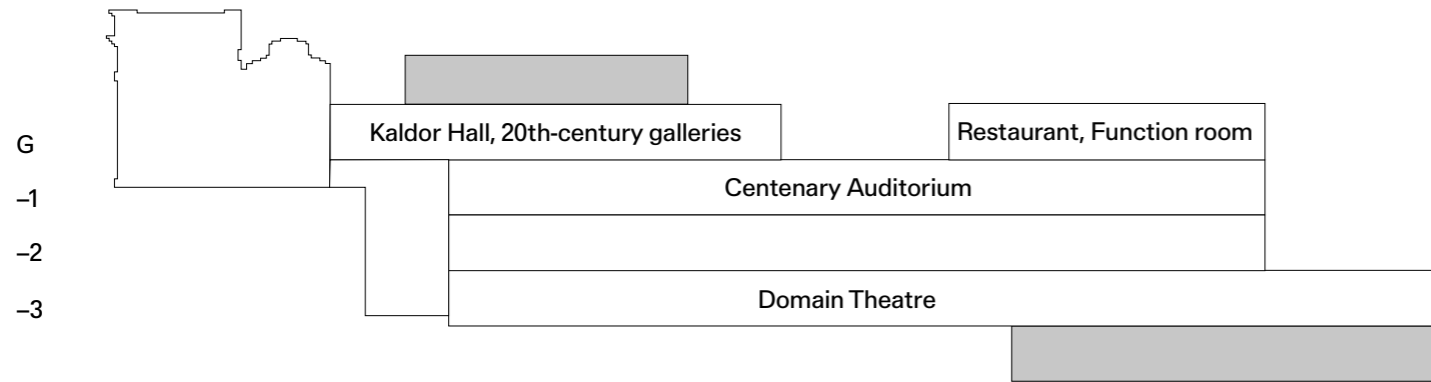
The [Domain Car Park](#) is located on St Mary's Road.

Do I need insurance to book an event?

Yes, it is a requirement of all corporate hirers to have Public Liability Insurance Cover for up to \$20 million.

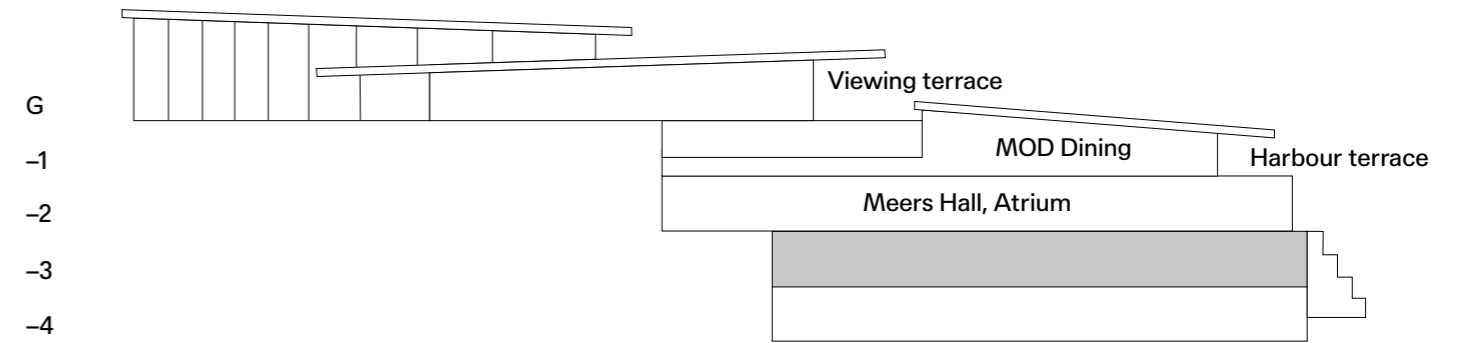


Naala Nura, our south building



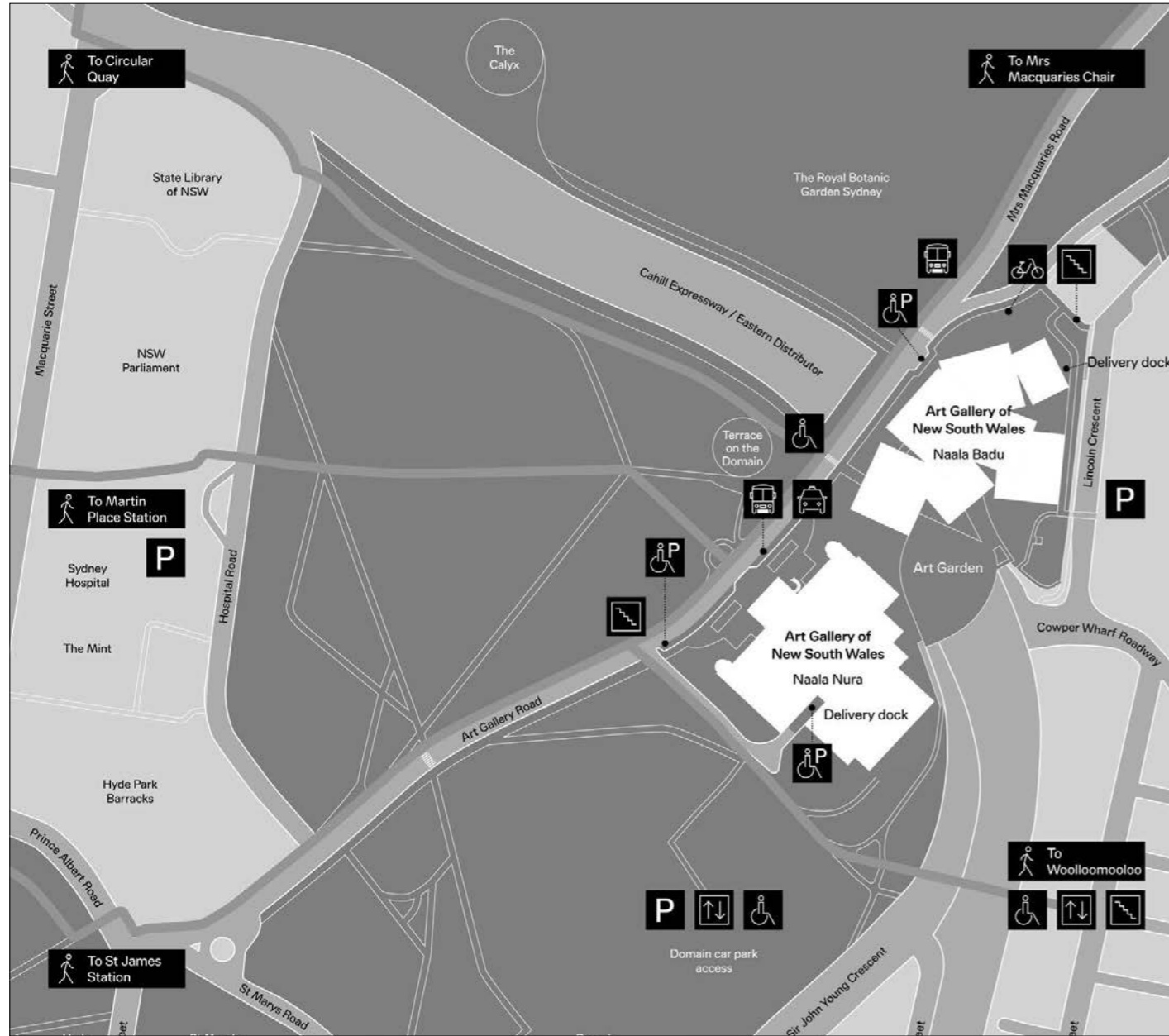
Ground Level	Kaldor Hall 20th-century galleries Art Gallery Restaurant Function room
Lower Level 1	Centenary Auditorium
Lower Level 2	
Lower Level 3	Domain Theatre

Naala Badu, our north building



Ground Level	Viewing terrace
Lower Level 1	MOD Dining Harbour terrace
Lower Level 2	Atrium Meers Hall

Precinct map



Art Gallery of New South Wales
 Art Gallery Road, The Domain
 Sydney NSW 2000 Australia
artgallery.nsw.gov.au

Our team of event specialists will work with you to deliver a successful event experience for your guests.

To discuss availability, please get in touch with our events team who would be delighted to provide you with more information, or fill in an event enquiry online form on our website.

+61 2 9225 1702

venuehire@ag.nsw.gov.au

artgallery.nsw.gov.au/visit/venue-hire

Cover: Photo © Art Gallery of New South Wales, James Horan

p2: Charlie Wartuma Tjungurrayi *Love story of a man and the moon* 1974, Art Gallery of New South Wales, purchased 1997 © Estate of the artist, licensed by Aboriginal Artists Agency Ltd, image © Art Gallery of New South Wales, Christopher Snee

Photos on pp 4 and 22: photo © Art Gallery of New South Wales, Jenni Carter

Photos on pp 6, 10-11, 15, and 32-33: © Art Gallery of New South Wales, James Horan

p7: Entrance Court view featuring Sally Gabori *Dibirdibi country* 2010 © Estate of Mirdidinggathi Juwarnda Sally Gabori/Copyright Agency, photo © Art Gallery of New South Wales, James Horan

pp8-9: Entrance Court featuring Michael Johnson *Oceania high low* 2014 (detail), Art Gallery of New South Wales © Michael Johnson/Copyright Agency, photo © Art Gallery of New South Wales, James Horan

Photos on pp 12 – 13, 16 - 19: © Art Gallery of New South Wales, Steven Woodburn

p14: Installation view of the 20th-century galleries, photo © Art Gallery of New South Wales, Christopher Snee

Photos on pp 20, and 44: © Iwan Baan

Photos on pp 23, 26 – 27, and 30 : photo © Art Gallery of New South Wales, Jacquie Manning

p24: Sculpture gallery, featuring Sol LeWitt *Non-geometric form (splotch) #1-6* 1999, Art Gallery of New South Wales © Estate of Sol LeWitt/ARS, Copyright Agency, photo © Art Gallery of New South Wales, Jacquie Manning

p25: Sculpture gallery, featuring (left to right) works by Frank Stella and Ugo Rondinone, Art Gallery of New South Wales, photo © Art Gallery of New South Wales, Jacquie Manning

pp28 – 29: featuring Lisa Reihana *'GROUNDLOOP' 2022* (screen) and Betty Kuntiwa Pumani *'Antara'* 2017 (lower wall), photo © Art Gallery of New South Wales, Jacquie Manning

p31: Viewing terrace, featuring Yayoi Kusama *Flowers that Bloom in the Cosmos* 2022, Art Gallery of New South Wales © Yayoi Kusama, photo © Art Gallery of New South Wales, Jacquie Manning

p34: Opening night of *Hilma af Klint: the secret paintings* exhibition 11 June 2021, featuring Hilma af Klint *Group IV, The ten largest, no 8, adulthood*, 1907, courtesy of the Hilma af Klint Foundation, photo: Tim Kindler

p36: [Michael Brand, director, Art Gallery of New South Wales, speaking at the 150th Anniversary dinner, 2021] photo: Belinda Rolland

p39: Ah Xian *Evolutionaura13: Taihu Rock-1* 2011-13, Art Gallery of New South Wales, purchased with funds provided by the Art Gallery Society of New South Wales 2014 © Ah Xian, image © Art Gallery of New South Wales, Christopher Snee

Art
Gallery
NSW

