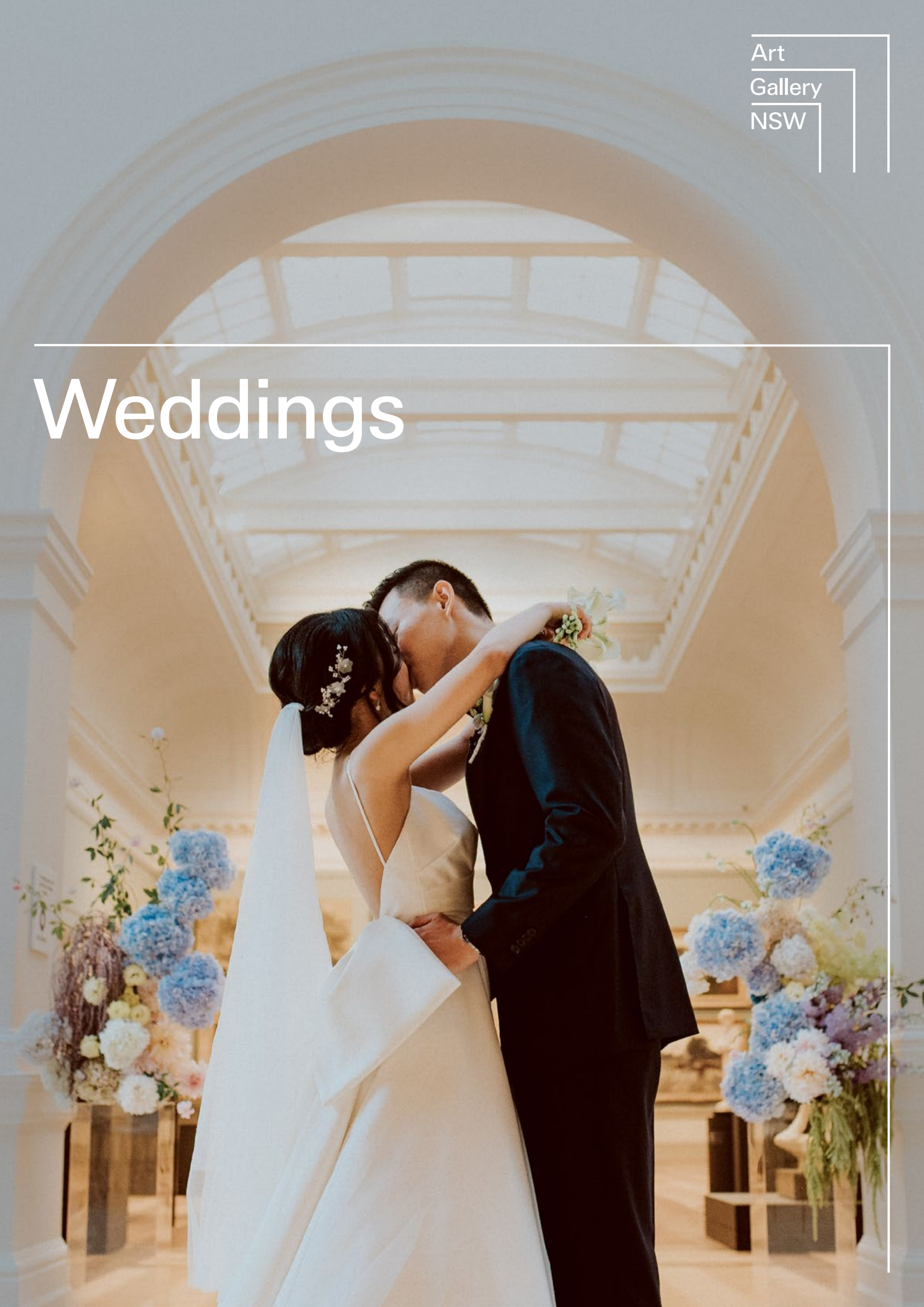


Weddings





Contents

Welcome	5
Naala Nura	6
Kaldor Hall	10
Art Gallery Restaurant and Function room	13
Naala Badu	14
Meers Hall	16
MOD Dining	17
Atrium	20
Harbour terrace	21
Catering	23
Photoshoots	25
Marriage proposals	27
Precinct map	28
Contact	29

We acknowledge the Gadigal people of the Eora Nation, the traditional custodians of the Country on which the Art Gallery of New South Wales stands.



Thank you for considering the Art Gallery of New South Wales for your special day, and congratulations on your engagement!

Set within one of the world's most beautiful cultural precincts, the Art Gallery is one of the finest locations in Sydney for weddings. With enchanting views of parklands and the harbour and magnificent architecture and artworks, it offers unparalleled photo opportunities and the chance to create memories to last a lifetime. We have three venue options for seated receptions across two buildings accommodating up to 200 guests.

To provide consistently exceptional dining experiences, the Art Gallery works with our exclusive caterer, The Fresh Collective, in collaboration with Australian chef Matt Moran.

Whether you are an art lover, had your first date at the Art Gallery, or are looking for a uniquely Sydney experience for your guests, we look forward to helping you plan a day that you will treasure forever.

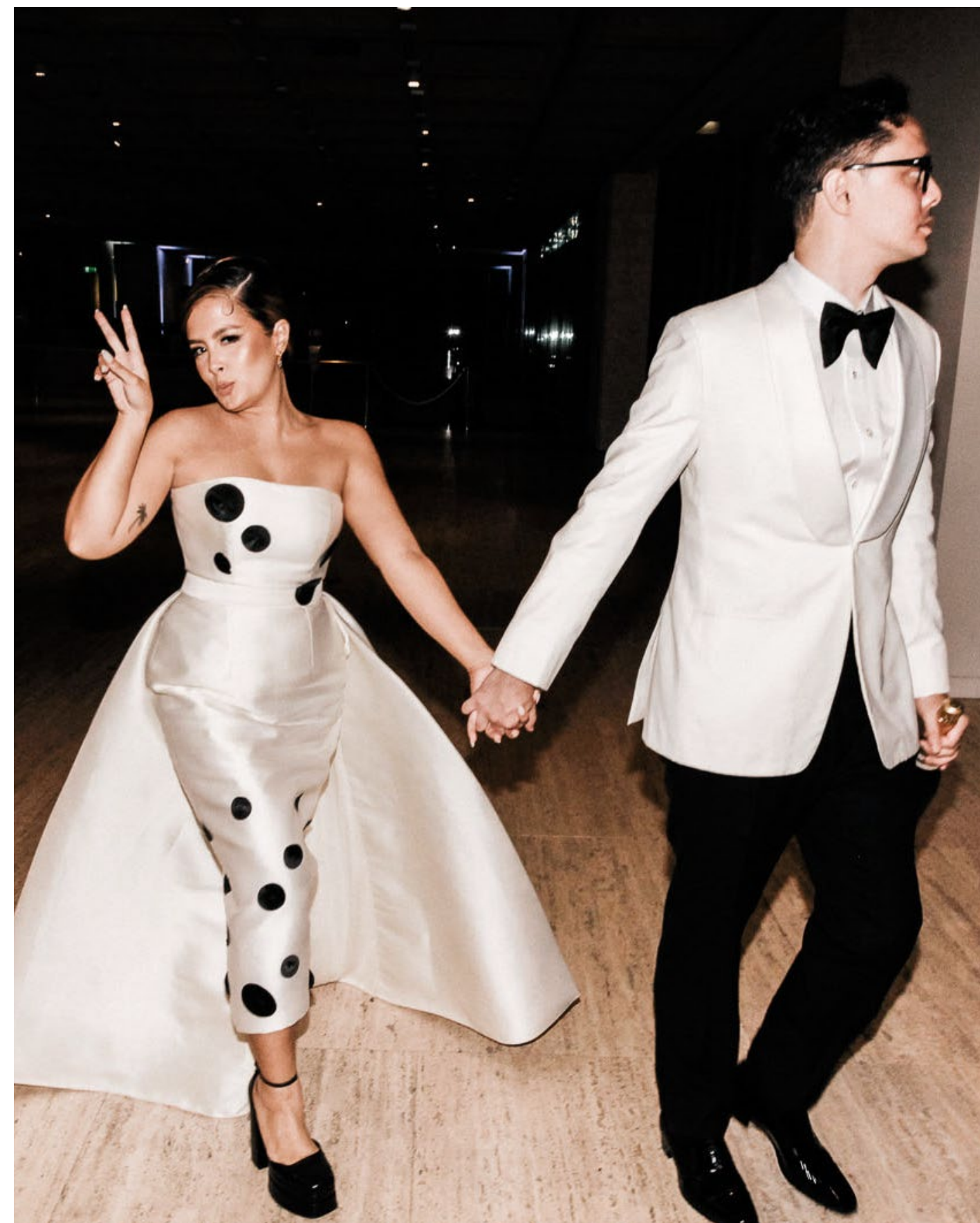
Venue hire at the Art Gallery contributes to bringing art to the community by funding Gallery programs. When you choose us for your event or function, you'll be directly supporting the arts in Australia.



Naala Nura

Weddings at the Art Gallery's Naala Nura are very special occasions. The dramatic façade of the building, with its Corinthian columns, was completed in 1909 and remains a stunning backdrop for wedding photography. You will have access to our Victorian-era Grand Courts for photographs from 5.15pm prior to the reception.

We can provide the services of our wonderful art guides to take your guests on an arrival tour of our 20th-century galleries and talk to them about some of the key works that have come to shape the Art Gallery's collection. The striking Kaldor Hall can be used for ceremonies, with the stunning Grand Courts as the backdrop, followed by the wedding reception in the restaurant and function room. The restaurant can accommodate up to 116 guests seated or, combined with the function room, can hold up to 200 guests (cocktail-style).







Kaldor Hall

The Kaldor Hall in Naala Nura is one of Sydney's most unique spaces for wedding ceremonies, with an ever-changing display of some of the best of international and Australian art.

After an optional tour of the 20th-century galleries, guests are seated in the Kaldor Hall with the stunning Grand Courts as the backdrop. This is the perfect start to the evening before guests are seated in the restaurant for the reception, and end the night with dancing in the function room.





Art Gallery Restaurant and Function room

The Art Gallery Restaurant has a warm, inviting feel with floor-to-ceiling windows and gorgeous views over East Sydney. The existing furniture is used for receptions and minimal additional styling is required to create an inviting space for guests to enjoy.

Event menus developed by Matt Moran, and delivered by our exclusive catering partner, The Fresh Collective, paired with the stunning location, set the restaurant apart as a space to host your wedding. The adjoining function room is used for pre-drinks and, with its hardwood flooring, is ideal for dancing the night away with friends and family following dinner in the restaurant.

Capacities:

- 116 seated, using existing furniture
- 200 cocktail-style with dancefloor



Naala Badu

The Art Gallery's Naala Badu has been designed by Pritzker Prize-winning architects, SANAA, with Architectus as executive architect. You will have access to spectacular art, architecture and landscaped outdoor areas for your wedding photography and a private collection viewing for your guests on arrival.

MOD Dining can accommodate up to 120 guests for a cocktail-style reception, or 66 seated. The Meers Hall can accommodate up to 200 guests seated or up to 300 guests cocktail-style. All capacities include space for a dancefloor.





Meers Hall

The Meers Hall is the most flexible space in Naala Badu. The hall features timber flooring and floor-to-ceiling windows with views out to the sculpture garden and to the adjacent sculpture gallery and atrium.

The space is suitable for a wide variety of event set-ups and comes with a range of state-of-the-art audio-visual equipment. It is suitable for banquet dinners for up to 200 guests, with space for a dancefloor.

Capacities:

- 300 cocktail-style with dancefloor
- 200 banquet with dancefloor
- 180 on long tables with dancefloor (hiring fee applicable for long tables)



MOD Dining

This light-filled space with its impressive curved roof has views to Woolloomooloo Bay, Sydney Harbour and East Sydney. MOD Dining can accommodate up to 66 guests seated, or up to 120 guests for a cocktail-style reception

This space connects seamlessly to the Harbour terrace, providing even more event planning options.

Capacities:

- 120 cocktail-style with dancefloor
- 66 on long tables with dancefloor





Atrium

The spectacular sculpture gallery and adjoining double-height atrium is at the heart of the Art Gallery's Naala Badu. The space features a changing selection of sculptural works and is perfectly located to take in the incredible architectural features of the building.

The gallery can be used for ceremonies and pre-dinner drinks, before a reception in the Meers Hall. It also allows access to the beautifully landscaped sculpture garden.



Harbour terrace

Overlooking Woolloomooloo Bay, this outdoor space is an iconic destination for entertaining and art experiences in Sydney.

The terrace can be used for ceremonies, prior to moving to Meers Hall or MOD Dining for the reception. You can also access the space as part of the hire of MOD Dining.

Note: Amplified sound is not possible on outdoor terraces. Wet-weather option for drinks is available. Terrace closes at 10pm. Additional catering charges may apply for the use of this space.



Catering

The Art Gallery of New South Wales' exclusive catering partner is The Fresh Collective.

The Fresh Collective provides exceptional event catering and signature menus for the Art Gallery in collaboration with Australian chef Matt Moran.

Chef and restaurateur Matt is the tour de force behind some of Australia's most celebrated dining establishments. At the heart of every one of his endeavours lies a passion for quality produce that is fresh and locally sourced. This passion, shared by Fresh, is reflected in contemporary and innovative menus that change with the seasons.

With over 40 years' industry experience, Fresh delivers seamless events in one of Sydney's most iconic venues, with outstanding food and drinks presented with flair by professional staff.



‘The team at the Art Gallery was a dream to work with, from ideation, to tastings, to vendor liaising, through to execution and professionalism on the night.’

Olivia and Anders, 2024

Photoshoots

Celebrate your love with a photoshoot set against the timeless beauty of the Art Gallery of New South Wales. Our Grand Court galleries in Naala Nura, with soaring ceilings, heritage flooring, and classical architecture, offer a breathtaking backdrop for capturing your most cherished moments.

To ensure a peaceful and uninterrupted experience, photography sessions are held outside of public opening hours, allowing you to fully immerse yourself in the moment. Whether you're marking your engagement, capturing pre-wedding memories, or commemorating your wedding day, our team will help you create a truly unforgettable experience.

What to expect:

- Exclusive access to the Grand Courts for a 1.5 hour shoot
- Mornings and evenings available, Tuesday to Saturday
- Morning times are from 8.15am to 9.45am and evenings 5.15pm – 6.45pm
- Pricing is for up to four people, including photo/ videographers
- Tailored arrangements are available for larger groups

Let us help you create images that will be treasured for a lifetime. Enquire today to check availability and begin planning your shoot. Pricing starts at \$1650.00 incl. GST for morning shoots, and \$2200.00 incl. GST for evenings.



'The gallery has such a special place in our, and Sydney's, history. There are very few destinations we know will exist and continue to be as important for decades to come.'

Milla and Ben, 2024

Marriage proposals

Imagine asking one of life's most important questions in a space that feels as timeless as your love. The Art Gallery of New South Wales offers an extraordinary setting for your proposal – elegant, intimate, and steeped in history.

Our Grand Courts, with their romantic archways and refined architectural details, provide a quiet grandeur that elevates the moment. Surrounded by art and beauty, it's a place where emotions resonate, and memories are made.

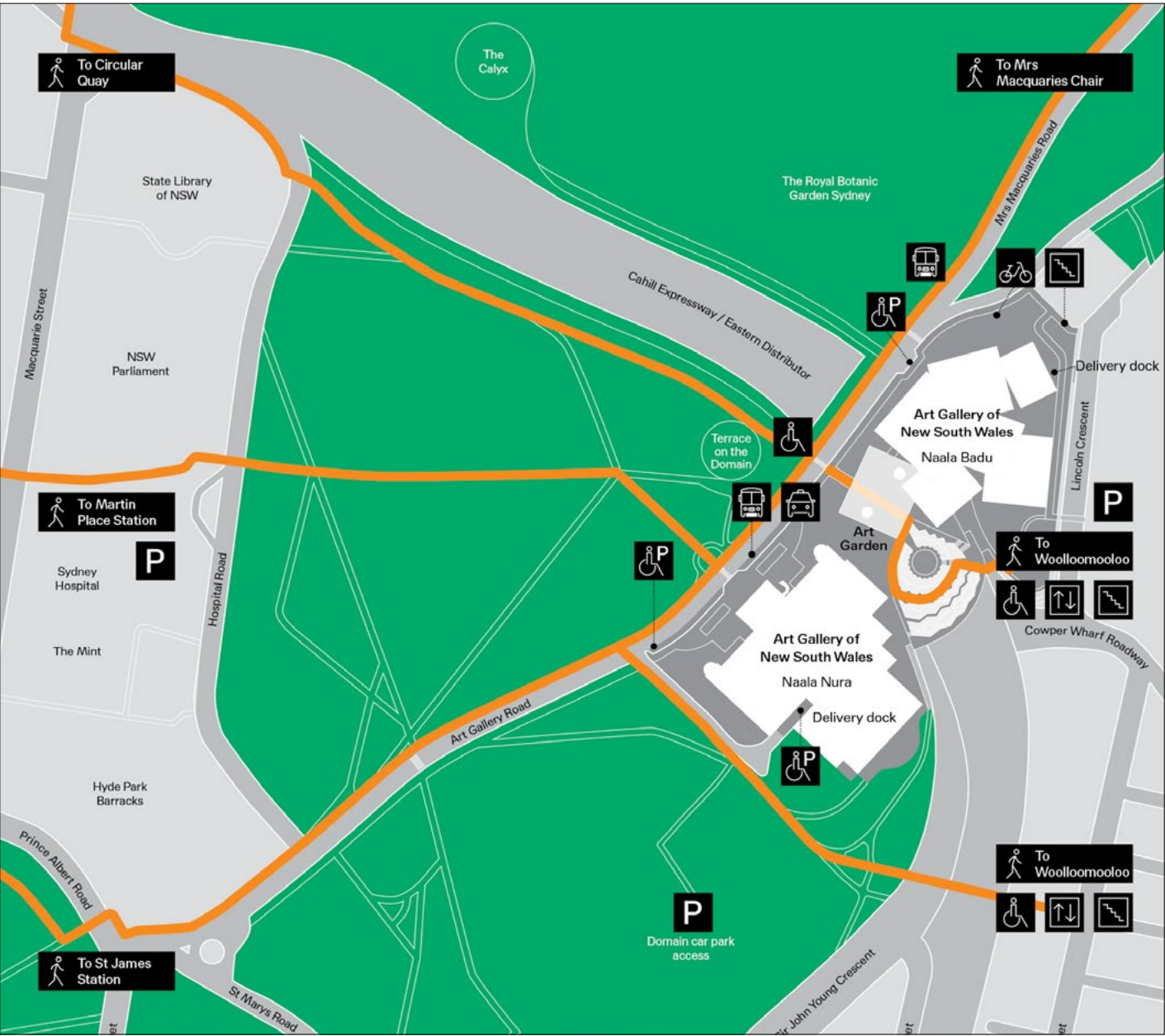
Whether you're planning a simple, heartfelt gesture or something more styled and cinematic, our team is here to help you create a proposal that's personal, seamless, and unforgettable.

What to expect:

- Private access to the Grand Courts for 30 minutes, outside of public opening hours
- Morning and evening times available, Tuesday to Saturday
- Option to bring a photographer to discreetly capture the moment
- Proposals can be booked up to four weeks in advance

Extended proposal options are available on request, offering additional time and support for styling or supplier coordination. Let us help you create a moment that will be remembered for a lifetime.

Precinct map



Art Gallery of New South Wales
Art Gallery Road, The Domain
Sydney NSW 2000 Australia
artgallery.nsw.gov.au

Our team of event specialists will work with you every step of the way, providing support and advice to ensure you can relax and enjoy your day, knowing that everything is in hand.

To discuss availability, please get in touch with our events team who would be delighted to provide you with more information, or fill in an event enquiry online form on our website.

+61 2 9225 1702
venuehire@ag.nsw.gov.au
artgallery.nsw.gov.au/visit/venue-hire

- Cover: © CJ Picture

p 2: Gemma Smith Zero 2016, Art Gallery of New South Wales, purchased with funds provided by the Contemporary Collection Benefactors © Gemma Smith, image © Art Gallery of New South Wales, Diana Panuccio

p 4: © Robert Cameriere Photography

p 6: © Zoe Morley Photography

p 7: © Mango Red Photography

pp 8 – 9: © Grand Courts installation featuring works by (left to right, top to bottom) Nicolas de Largillierre, Agnolo Bronzino, William Dobell, Sir Joshua Reynolds, Ethel Walker, Margaret Olley, Pierre Bonnard, and Giovanni Battista Moroni, photo © Olguin Photography

p 10: © 2024 T-ONE IMAGE Wedding Photography & Video

p 11: © The Salty Shutter Photography

p 12 (top): © CJ Picture
- p 12 (bottom): © The Salty Shutter Photography

p 13: © Sam Riles Photography

pp 14 – 15: © Blumenthal Photography

p 15: © de lumière Photography

p 16: © de lumière Photography

p 17: © 2024 Joshua Morris

p 18: © Scott Surplice Photography

pp 19 – 20: © de lumière Photograph

p 21: © de lumière Photography

pp 22 – 23: photo © Art Gallery of New South Wales, James Horan

p 24: © Alex Marks Photography

p 26: © The Salty Shutter Photography

Back cover: © 2024 T-ONE IMAGE Wedding Photography & Video

