

# Allen & Overy

**LIGHT, TRANSPARENCY AND ACCURATE MATERIAL CHOICES CONFIGURE THE OFFICES OF AN INTERNATIONAL LAW FIRM, CREATING WELLBEING AT WORK.**

The Milan branch of the international law firm Allen & Overy occupies one of the blocks of an architectural complex designed by Pietro Portaluppi, entirely redeveloped in the centre of Milan.



**MILAN**

TYPOLGY  
**Office Interiors**

CLIENT  
**Allen & Overy**

ADDRESS  
**Via Ansperto 5,  
Milan**

PROJECT  
**2018**  
REALIZATION  
**2018-2019**

PROFESSIONAL SERVICE  
**Architectural Project  
Interior Design  
Artistic site supervision**

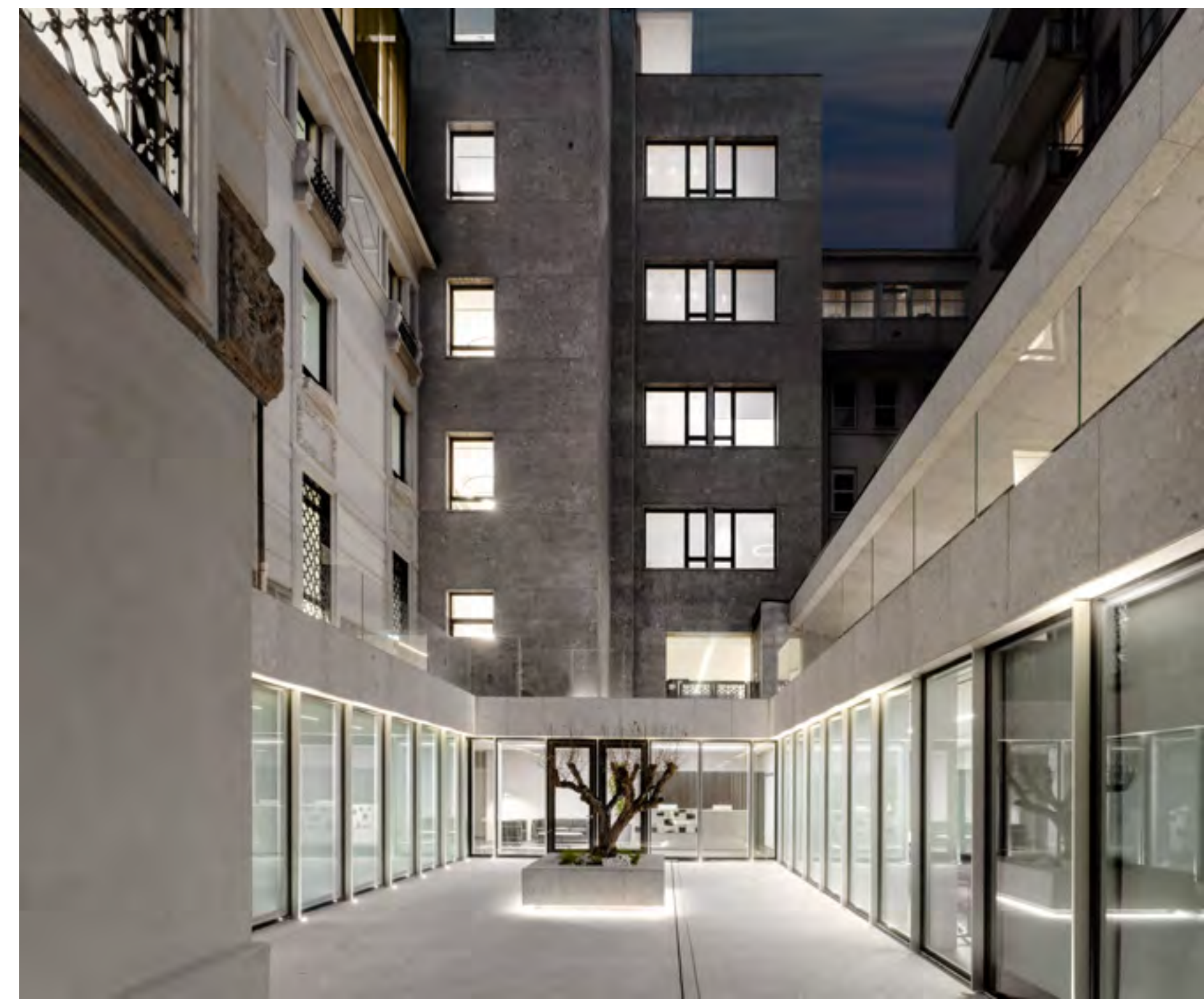
AREA  
**sqm 3.450**



**BY RECOVERING THE BASEMENT SPACES, A UNDERGROUND COURTYARD HAS BEEN CREATED, OVERLOOKED NOW BY ENTERTAINMENT SPACES AND MEETING ROOMS.**

Furnished with simple and essential elements, the different-sized meeting rooms are characterised by a minimalist yet welcoming design, the dark wood floors and the walls decorated in different shades of grey livened up by the strong magenta dashes of the seats.

Amenity areas, a cafeteria, and a changing room area have been created on the ground floor overlooking the patio. The two reception areas, are characterised by a simple division of spaces and minimal furnishings that play on the interaction between the neutral colors of the walls and the spare furniture. The offices occupy the first, second and upper floors.





**ON THE FIRST, SECOND AND ADDED FLOORS, THE FULLY GLAZED OFFICE SPACE LOOKS ONTO THE TWO SIDES OF THE CORRIDOR THAT RUNS THROUGH THE ENTIRE FLOOR.**

Creating a dynamic and welcoming environment, the light-coloured walls and desks are combined with a lighting project aimed at ensuring well-being at work.

The partition walls guarantee the soundproofing and privacy of the rooms.

The firm's library is located on the side overlooking the sunken courtyard, an environment that is both spacious and intimate. Books and manuals are housed in the full-height shelving covering the walls. The tables are aligned along the centre, alternate with sofas. The resulting environment is perfectly suited to its function and conducive to concentration, a place where the light wood of the shelves, the dark table surfaces and the grey sofas combine to create a comfortable environment that almost feels like home.

