

Open 336

REINTERPRETING THE IDENTITY OF A FORMER INDUSTRIAL NEIGHBORHOOD BY ABSORBING ITS CHROMATIC MOOD AND MORPHOLOGICAL DETAILS.

The new office building in Viale Sarca, Milan, is a contemporary development of the context's architectural archetypes, in continuity with the profound urban and social changes of the Bicocca district, a former industrial area in the north-east outskirts of the city. The building absorbs the chromatic mood of the area on the form and structure of its façade.

In its narrowest part, the front of the building tilts into an elevation that, overlooking the city and the people flows from the underground, welcomes users and visitors to a large open perimeter.



MILAN

TYPOLOGY
New office building

CLIENT
**Savills Investment
Management SGR S.p.A.,
Barings Italy Srl**

ADDRESS
**Viale Sarca 336,
Milan**

PROJECT
2020
REALIZATION
on going

PROFESSIONAL SERVICE
**Integrated Design
Artistic site supervision**

AREA
sqm 8.700

ENERGY CERTIFICATION
**LEED Gold
WELL Gold**

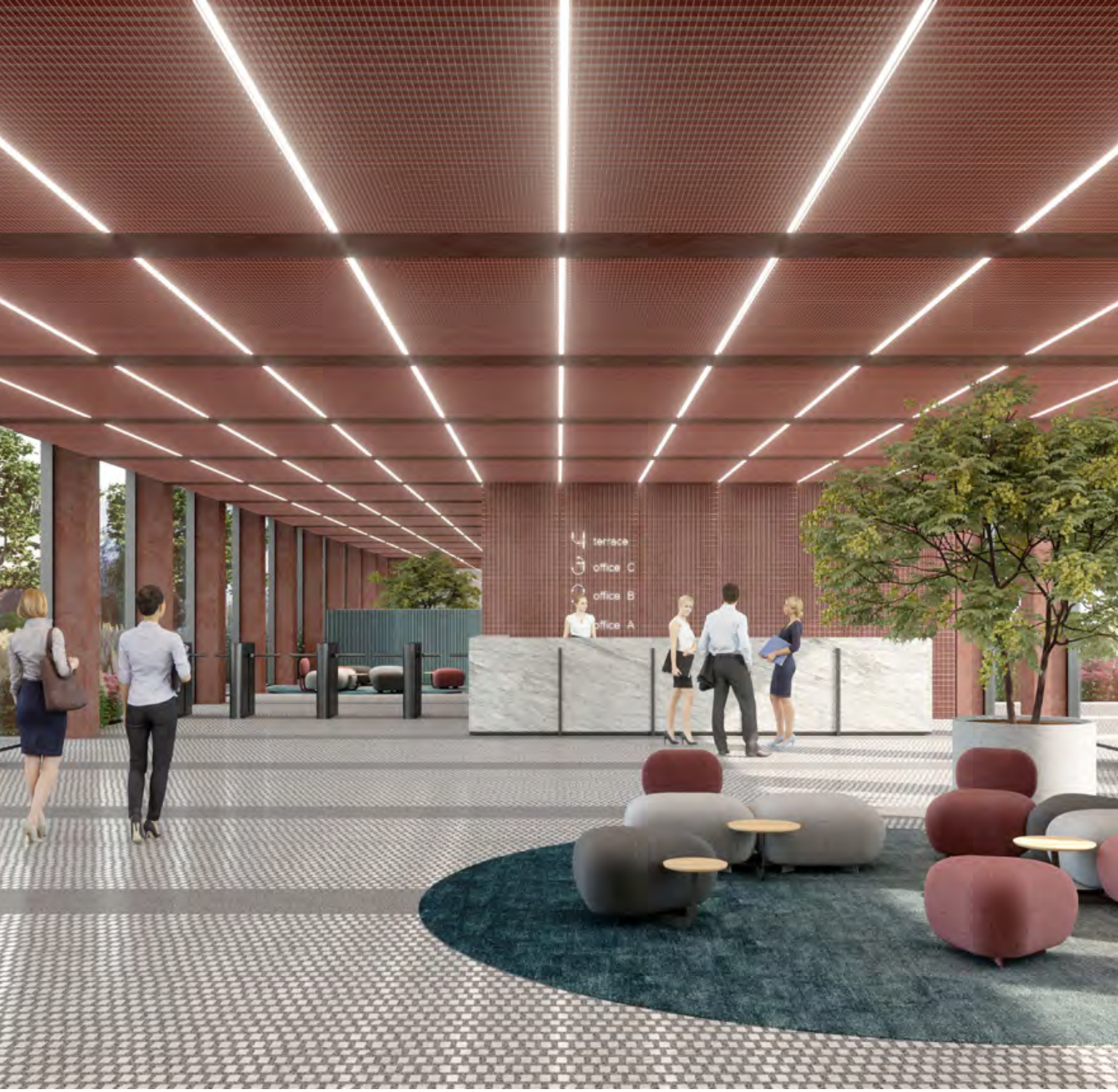


ON THE GROUND FLOOR AND ON THE TOP FLOOR THE RECTANGULAR BUILDING FEATURES HOLLOWED-OUT SECTIONS THAT MAKE IT PERMEABLE WHILE BALANCING OUT BOTH FRONTS OF THE BUILDING.

The façade's design synthesises and interprets the surrounding buildings' morphology. Thanks to the distribution of pilaster strips and belt courses in rosy orange fibre cement reminiscent of bricks, the front is characterised by a linear rhythm, both horizontally and vertically, balanced between full or double-floor glass openings and structural frame on the façade. The offices, almost all open-spaces, benefit from the large glass scores, that offer a telescopic view of the external landscape to all their occupants.







LOCATED IN THE PORTICOED SPACE THAT CONNECTS THE TWO LONG SIDES OF THE BUILDING, THE HALL IS A LARGE, BRIGHT GLAZED SPACE SURROUNDED BY GREENERY.

Thanks to its size and design, the hall can accommodate one or more reception areas and is an environment conceived to balance and give continuity to the outside of the building through the use of colour and materials that are poised between high-tech and post-industrial references. On the fourth and last floor, a terrace interrupts the floors' regular sequence, opening the view towards the south and towards the city.

