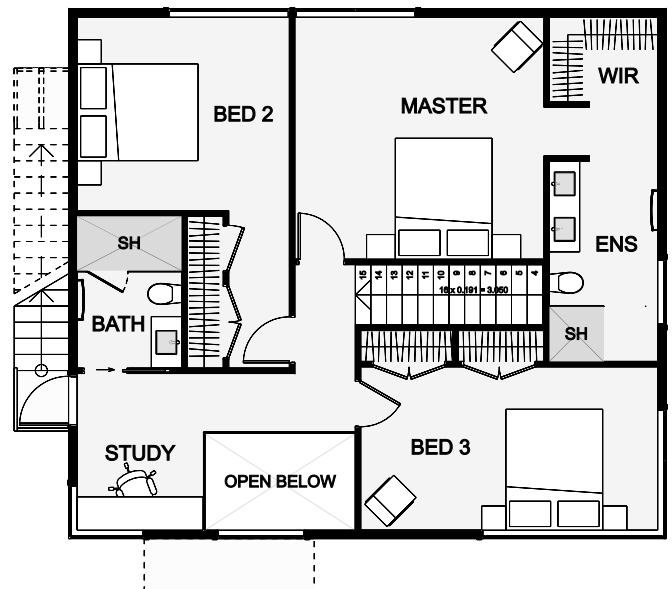
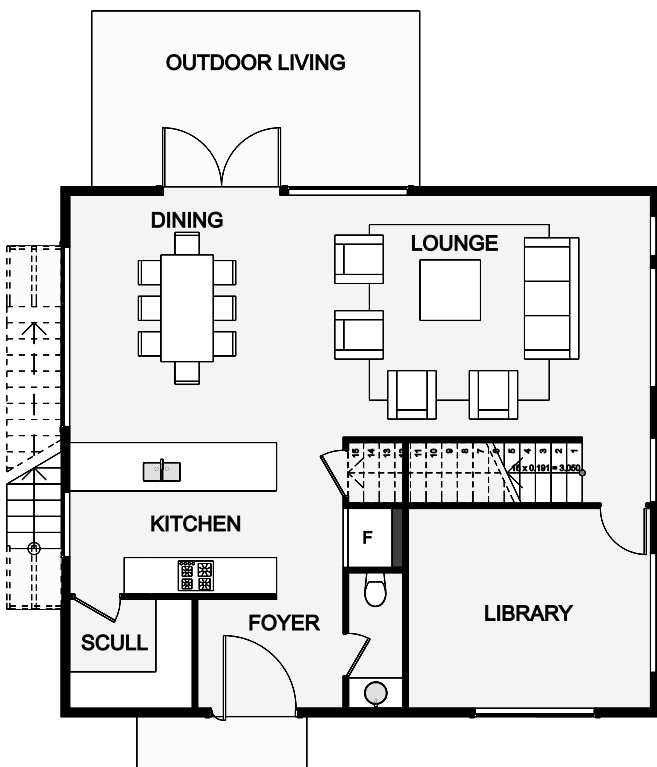




This home is simplistic in shape, yet screams architecture through the brick and glazing forms. The kitchen comes with a scullery and the living, dining and entertaining areas are well integrated to capture light and create an easy indoor-outdoor feel with the large windows. The Nima still manages to retain a practical feel with a large office or library at the front of the home. Upstairs there is a study nook and two well-sized bedrooms both with double wardrobes. The upstairs glamorous master bedroom complete with ensuite and walk-in-robe finishes the second storey of this highly practical yet visually stunning home. One major standout optional feature is the roof-top living, check the surf without leaving home!



Floor Area: 164m²

0
 3+
 2
 2
 9.9m
 8.8m

Contact us:

P 0800 6 KITSET (0800 654 873)
 E coasttocoastkitsets@gmail.com
 www.coasttocoasthomes.co.nz

COAST TO COAST
 KITSET HOMES